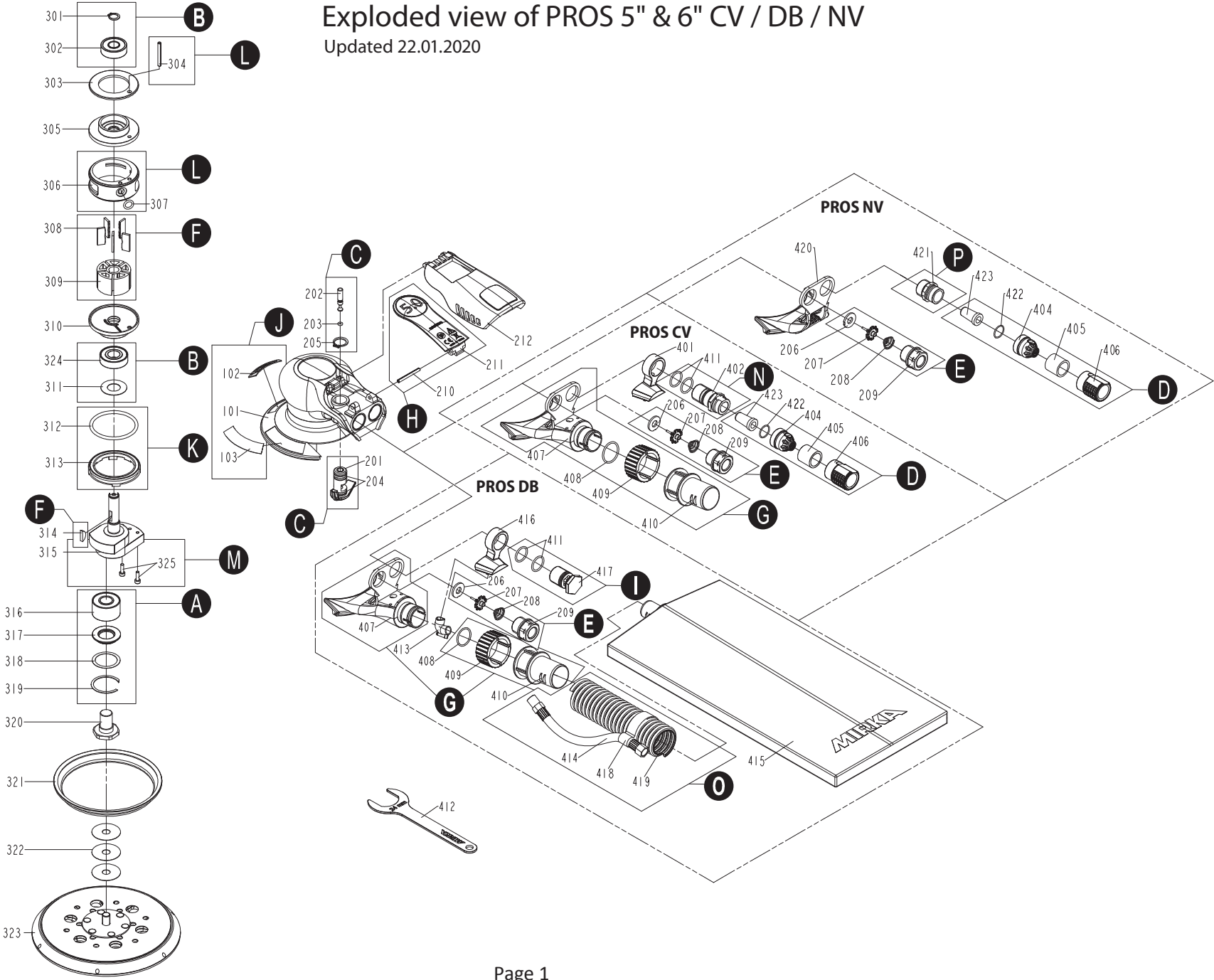




Exploded view of PROS 5" & 6" CV / DB / NV

Updated 22.01.2020



PROS 5" & 6" CV/DB/NV Spare Part kits

Note! Repairs performed by non-authorized repairer will breach the Mirka warranty.

Item	Description	Kit	QTY	Part No
	Bearing kit (loose parts)			MIE6536211
316	Bearing		1	MPP0316
317	Rubber Seal	A	1	MPP0317
318	Washer (Optional)		OPT.	MPP0318
319	Retaining Ring		1	MPP0319
	Spindle Bearing kit (pre assembled)			MIE6536211
316	Bearing		1	MPP0316
317	Rubber Seal	A+320	1	MPP0317
318	Washer (Optional)		OPT.	MPP0318
319	Retaining Ring		1	MPP0319
320	Spindle		1	MPP0320
	Endplate Bearing kit			MPP9002
301	Retaining Ring		1	MPP0301
302	Bearing	B	1	MPP0302
311	Dust Seal		1	MPP0311
324	Bearing		1	MPP0324
	Speed Valve kit			MPP9003
201	Regulator Unit		1	MPP0201
202	Valve Stem	C	1	MPP0202
203	O-Ring		1	MPP0203
204	O-Ring		2	MPP0204
205	Retaining Ring		1	MPP0205
	Muffler kit 12000 rpm			MPP9004
404	Nozzle		1	MPP0404
405	Muffler	D	1	MPP0405
406	Muffler CAP		1	MPP0406
422	O-Ring		1	MPP0422
423	Powder Metal Silencer		1	MPP0423
	Air Inlet kit			MPP9005
206	Seal		1	MPP0206
207	Tip Valve	E	1	MPP0207
208	Valve Spring		1	MPP0208
209	Inlet Connection		1	MPP0209
	Rotor, Vanes and Key kit			MPP9006
308	Vanes	F	5	MPP0308
309	Rotor		1	MPP0309
314	Rotor Key		1	MPP0314
	Exhaust and Swivel kit - PROS CV & DB			MPP9007
407	Vacuum Adapter – PROS CV & DB		1	MPP0407
408	O-Ring	G	1	MPP0408
409	Swivel Grip		1	MPP0409
410	Swivel Connector		1	MPP0410
	Lever kit 2,5 mm Orbit			MPP9015
210	Spring Pin	H	1	MPP0210
211	Lever 2,5 mm Orbit		1	MPP0214
	Lever kit 5,0 mm Orbit			MPP9008
210	Spring Pin	H	1	MPP0210
211	Lever 5,0 mm Orbit		1	MPP0211
	Lever kit 8,0 mm Orbit			MPP9009
210	Spring Pin	H	1	MPP0210
211	Lever 8,0 mm Orbit		1	MPP0213

PROS 5" & 6" CV/DB/NV Spare Part kits

Item	Description	Kit	QTY	Part No
	Retainer and O-Ring kit - PROS DB			MPP9022
411	O-Ring	I	2	MPP0411
417	Muffler Connection		1	MPP0417
	Housing and Mark Plate kit			MPP9012
101	Housing	J	1	MPP0101
102	Mark Plate		1	MPP0102
103	Model Sticker (550, 580, 625, 650 & 680)		7	MPP0103
	Lock Ring and O-Ring kit			MPP9011
312	O-Ring	K	1	MPP0312
313	Lock Ring		1	MPP0313
	Cylinder, Spring Pin and O-Ring kit			MPP9013
304	Spring Pin	L	1	MPP0304
306	Cylinder		1	MPP0306
307	O-Ring		1	MPP0307
	Shaft Balancer kit 2,5mm/125 mm - PROS 525			MPP9025
315	Shaft Balancer 2,5 mm/ 100 g Pad	M	1	MPP0330
325	Balance Screws		2	MPP0325
	Shaft Balancer kit 5,0mm/125 mm - PROS 550			MPP9016
315	Shaft Balancer 5,0 mm/ 100 g Pad	M	1	MPP0315
325	Balance Screws		2	MPP0325
	Shaft Balancer kit 8,0mm/125 mm - PROS 580			MPP9021
315	Shaft Balancer 8,0 mm/ 100 g Pad	M	1	MPP0329
325	Balance Screws		2	MPP0325
	Shaft Balancer kit 2,5mm/150 mm - PROS 625			MPP9017
315	Shaft Balancer 2,5 mm/ 130 g Pad	M	1	MPP0326
325	Balance Screws		2	MPP0325
	Shaft Balancer kit 5,0mm/150 mm - PROS 650			MPP9018
315	Shaft Balancer 5,0 mm/ 130 g Pad	M	1	MPP0327
325	Balance Screws		2	MPP0325
	Shaft Balancer kit 8,0mm/150 mm - PROS 680			MPP9019
315	Shaft Balancer 8,0 mm/ 130 g Pad	M	1	MPP0328
325	Balance Screws		2	MPP0325
	Muffler Connection and O-Ring kit - PROS CV			MPP9020
402	Muffler Connection	N	1	MPP0402
411	O-Ring		2	MPP0411
	Hose Assembly kit 1.8 m - PROS DB			MPP9023
414	Hose Air Tube	O	1	MPP0414
418	Fastening Straps		5	MPP0418
419	Hose 1.8 m for DB		1	MPP0419
	Muffler Connection kit - PROS NV			MPP9024
421	Muffler Connection	P	1	MPP0421

Separate spare parts on next page.

PROS 5" & 6" CV/DB/NV Spare Parts

Item	Description	Kit	QTY	Part No
101	Housing	J	1	MPP0101
102	Mark Plate	J	1	MPP0102
103	Model Sticker (550, 580, 625, 650 & 680)	J	7	MPP0103
201	Regulator Unit	C	1	MPP0201
202	Valve Stem	C	1	MPP0202
203	O-Ring	C	1	MPP0203
204	O-Ring	C	2	MPP0204
205	Retaining Ring	C	1	MPP0205
206	Seal	E	1	MPP0206
207	Tip Valve	E	1	MPP0207
208	Valve Spring	E	1	MPP0208
209	Inlet Connection	E	1	MPP0209
210	Spring Pin	H	1	MPP0210
211	Lever 5,0 mm Orbit	H	1	MPP0211
211	Lever 8,0 mm Orbit	H	1	MPP0213
211	Lever 2,5 mm Orbit	H	1	MPP0214
212	Cover		1	MPP0212
301	Retaining Ring	B	1	MPP0301
302	Bearing	B	1	MPP0302
303	Front Ring		1	MPP0303
304	Spring Pin	L	1	MPP0304
305	Front Bearing Plate		1	MPP0305
306	Cylinder	L	1	MPP0306
307	O-Ring 10/pack	L	1	MPP0307
308	Vanes	F	5	MPP0308
309	Rotor	F	1	MPP0309
310	Rear End Plate		1	MPP0310
311	Dust Seal	B	1	MPP0311
312	O-Ring	K	1	MPP0312
313	Lock Ring	K	1	MPP0313
314	Rotor Key	F	1	MPP0314
315	Shaft Balancer 2,5 mm/ 100 g Pad	M	1	MPP0330
315	Shaft Balancer 5,0 mm/ 100 g Pad	M	1	MPP0315
315	Shaft Balancer 8,0 mm/ 100 g Pad	M	1	MPP0329
315	Shaft Balancer 2,5 mm/ 130 g Pad	M	1	MPP0326
315	Shaft Balancer 5,0 mm/ 130 g Pad	M	1	MPP0327
315	Shaft Balancer 8,0 mm/ 130 g Pad	M	1	MPP0328
316	Bearing	A	1	MPP0316
317	Rubber Seal	A	1	MPP0317
318	Washer (Optional)	A	OPT.	MPP0318
319	Retaining Ring	A	1	MPP0319
320	Spindle	A+320	1	MPP0320
321	Brake Seal		1	MPP0321
323	Mirka Backing Pad 125 mm, 28 H 5/16" Grip Med. 100g		1	-
323	Mirka Backing Pad 150 mm, 48 H 5/16" Grip Med. 130g		1	-
323	Mirka Backing Pad 125 mm, NH 5/16" PSA M 100g		1	-
323	Mirka Backing Pad 150 mm, NH 5/16" PSA M 130g		1	-
324	Bearing	B	1	MPP0324
325	Balance Screws	M	2	MPP0325
401	Connector - PROS CV		1	MPP0401
402	Muffler Connection	N	1	MPP0402

PROS 5" & 6" CV/DB/NV Spare Parts

Item	Description	Kit	QTY	Part No
404	Nozzle	D	1	MPP0404
405	Muffler	D	1	MPP0405
406	Muffler CAP	D	1	MPP0406
407	Vacuum Adapter	G	1	MPP0407
408	O-Ring	G	1	MPP0408
409	Swivel Grip	G	1	MPP0409
410	Swivel Connector	G	1	MPP0410
411	O-Ring	I,N	2	MPP0411
412	Mirka Pad Wrench 24mm (supplied with each tool)		1	MPP0412
413	Eductor Tube - PROS DB		1	MPP0413
414	Hose Air Tube	O	1	MPP0414
415	Dust Bag		1	MPP0415
416	Connector - PROS DB		1	MPP0416
417	Muffler Connection	I	1	MPP0417
418	Fastening Straps 6/pack	O	5	MPP0418
419	Hose Assembly 1.8 m - PROS DB	O	1	MPP0419
420	Vacuum Adapter - PROS NV		1	MPP0420
421	Muffler Connection	P	1	MPP0421
422	O-Ring	D	1	MPP0422
423	Powder Metal Silencer	D	1	MPP0423