

Automated Pouch and Bag Picking & Opening System

Accu-Pick

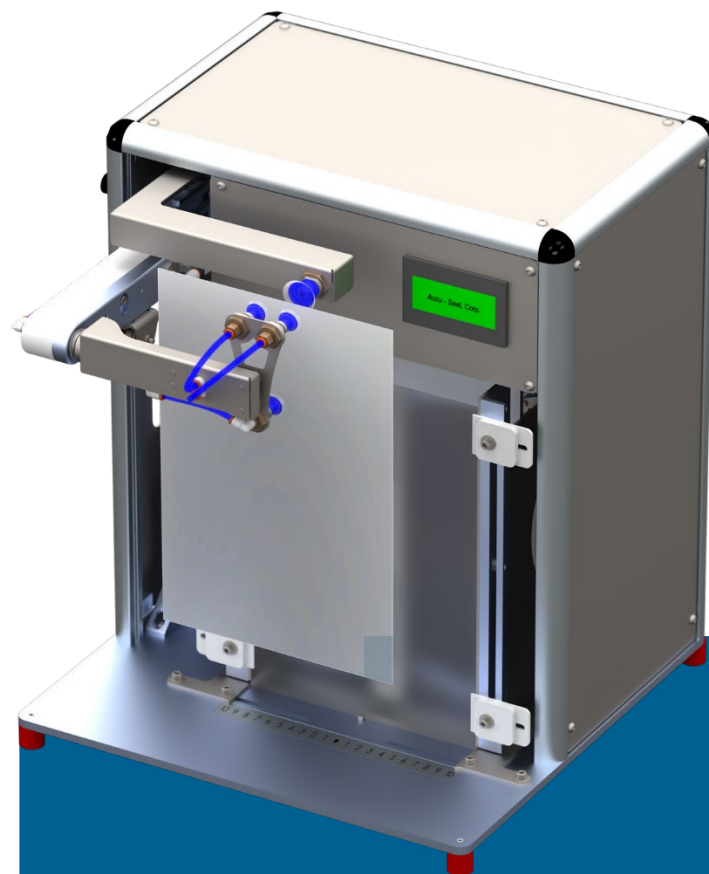
SencorpWhite's Accu-Pick is a bench-top pouch picker/opener that increases operator efficiency and throughput in manual product load and heat seal applications.

The Accu-Pick picks one premade pouch at a time from a magazine, opens the pouch and presents it to the operator.

Gloved operators often struggle to separate one pouch from a stack and open the pouch to load the product. The Accu-Pick eliminates the manual pouch manipulation increasing the operator's speed and production throughput.

This system significantly increases operator efficiency versus manually picking a pouch from a pile, opening it and loading a product prior to heat sealing the pouch.

The Accu-Pick can be purchased as a stand-alone unit to be used with your existing pouch sealer or it can be purchased along with a CeraTek constant heat pouch sealer, Accu-Seal impulse pouch sealer or Urania rotary band pouch sealer.



- **Unparalleled Performance:** For more than 50 years, Accu-Seal impulse sealers have been recognized as the workhorses of the packaging industry.
- **State of the Art:** Our medical sealers provide unparalleled repeatability, accuracy and performance with sustainability in mind.
- **Superior Engineering:** Our unrivaled, quality engineering and industry knowledge are the keys to why Accu-Seal's sealers are the market leaders.

Key Features

Operational Efficiency

Operators significantly increase their product fill rates with the Accu-Pick automated pouch and bag picker and opener. The operator's efficiency is significantly improved by eliminating the challenge of manually singulating and opening pouches on a repetitive basis.

Cycle Options

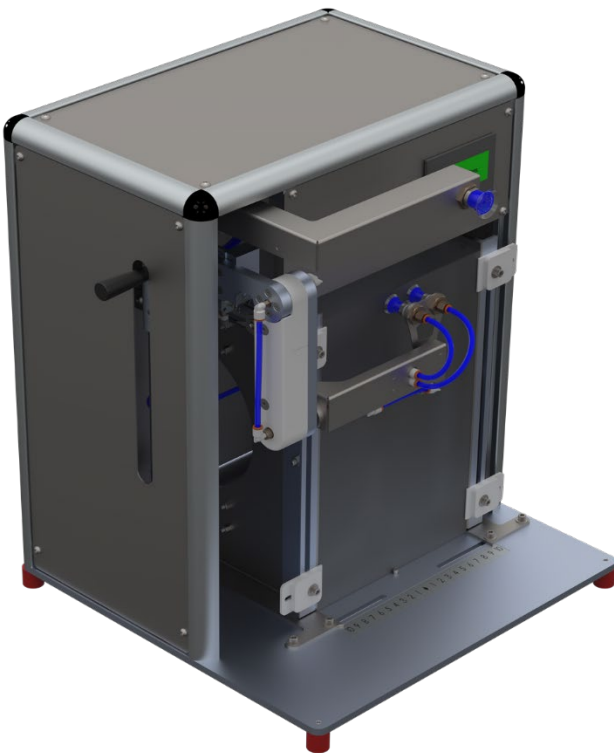
The Accu-Pick can be operated in one of two modes selectable through the HMI. The first mode features on-demand cycling triggered by an electronic foot-switch. The second mode features automatic cycling with the timing adjustable through the HMI (up to 20 cycles per minute).

Flexibility of Pouch Size and Type

Adjustable to accommodate pouches between 3" and 10" wide and between 6" and 16" long with no change-parts required when changing from one pouch size to another (changeover can be completed with a single Allen wrench in less than 5 minutes). The Accu-Pick can process most types of flat pouches/bags including Tyvek®/film, film/film, foil/film, foil/foil and coated paper pouches.

Clean Room Compliant

Designed and manufactured with materials for clean room compliance.



Specifications

Width: 20 in (508 mm)

Depth: 19.5 in (495.3 mm)

Height: 25.5 in (647.7 mm)

Weight: 45 lbs (20.4 kg)

Power: 120 VAC, single phase, 5 amps

Air Usage: 5 SCFM, 100 PSI compressed air

Contact us today for a proposal!

accu-seal.com/accu-pick



www.accu-seal.com

Accu-Seal
225 Bingham Dr Suite B
San Marcos, CA 92069

Accu-Seal, located in California, is a leader in the design and manufacturing of heat-sealing solutions for a broad range of markets and applications. They are recognized worldwide as the preferred supplier of heat-sealing machinery when repeatability and reliability are critical.