

CST ADVENTURE



CST®

AUTOMOTIVE TIRE CATALOGUE
2023/2024



OUR COMPANY

CST was founded in 1989 by Cheng Shin Rubber (Xiamen) Ind., Ltd. The Cheng Shin Tire Group is the top tire manufacturer in China and one of the top 10 tire manufacturers in the world, with products distributed in more than 150 countries.

CST covers a wide range of market segments. CST products include tires and tubes for passenger, truck and bus, bicycle, motorcycle, ATV, forklift, agricultural, and lawn and garden equipment.

The company's new factory in Xiamen, China, which produces passenger radial and light truck radial tires, brings CST's tire development and manufacturing to a world-class level. This state-of-the-art facility employs innovative technology and advanced equipment from Germany, Italy, Holland, Japan and Taiwan.

Adhering to the most stringent international standards, CST has attained certificates and awards including DOT (US Department of Transportation) certification, ISO9001, E-Mark, IATF16949 and the China Well Known Brand Award.

With a first-rate manufacturing operation and highly efficient logistics, CST sets the standard for excellence in the tire industry. At CST, quality, integrity and service are more than just words: They're the foundation of the company from top management to the factory floor and beyond.

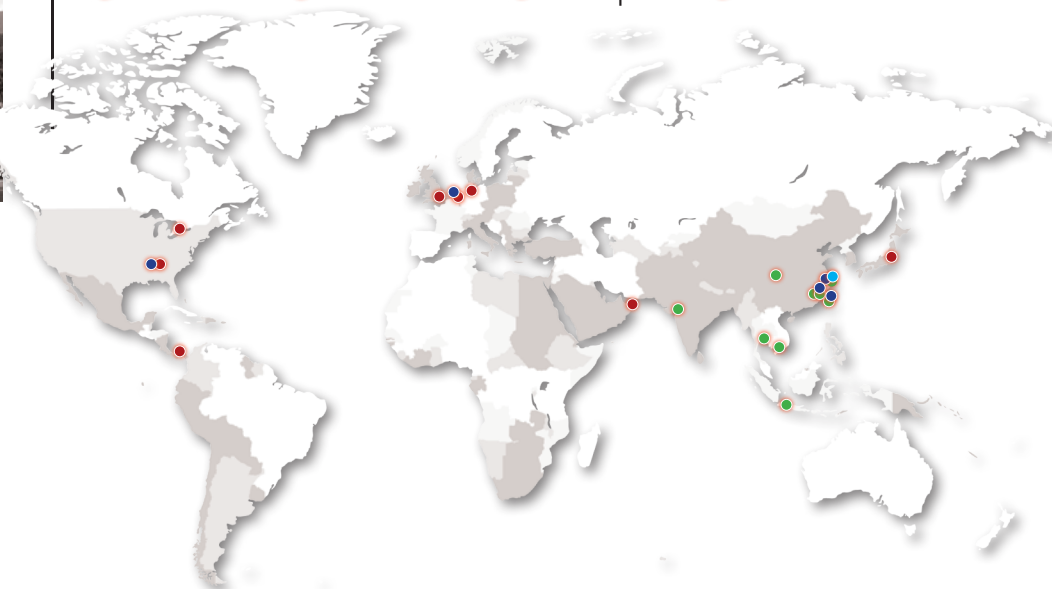
18 FACTORIES:

- 6 in Taiwan
- 8 in China
- 1 in Thailand
- 1 in Vietnam
- 1 in Indonesia
- 1 in India
- 1 in USA
- 1 in Holland
- 1 in Japan
- 2 in China
- 1 in Taiwan

- 1 PROVING GROUND in Shanghai, China

8 OVERSEAS SUBSIDIARIES:

- 1 in USA
- 1 in Canada
- 1 in Germany
- 1 in UK
- 1 in Holland
- 1 in Japan
- 1 in Dubai
- 1 in Panama



CONTENTS

Light Truck/SUV/4X4



DRAGON CLAW CL21M NEW	10
LAND DRAGON CL18M	12
LAND DRAGON CL18	14
M-KING CL98 & CL28	16
SAHARA AT318 NEW	18
SAHARA M/T II	20
SAHARA ATM	21
SAHARA A/T II	22
SAHARA ATS	23
SAHARA CS912	24
VOYAGE VA76	25

Performance car/SUV



ADRENO AD-R9 RFT NEW	28
ADRENO AD-R9 & AD-R9 SUV	30
ADRENO AD-R8	32

Passenger car/SUV



MEDALLION MD-A7 & SUV	36
MEDALLION MD-A1	38
MARQUIS MR61	40
MARQUIS MR-C5	41

Commercial



VAN MASTER VR36	44
TRAILERMAXX ECO CL31N NEW	45
CL02	46
CL31	46
CS105	46

2022 Global tire company rankings

August 2022, Tire Business

2022 rank	Company	Revenue
1	Michelin	USD 26.29 billion
2	Bridgestone	USD 22.17 billion
3	Goodyear	USD 14.91 billion
4	Continental	USD 12.00 billion
5	Sumitomo Rubber	USD 7.24 billion
6	Pirelli	USD 6.34 billion
7	Hankook	USD 5.97 billion
8	Zhongce Rubber	USD 4.52 billion
9	Yokohama	USD 4.22 billion
10	Cheng Shin Rubber	USD 3.86 billion
11	Toyo Tire	USD 3.22 billion
12	Giti Tire	USD 3.04 billion
13	Linglong	USD 2.91 billion
14	Apollo Tyres	USD 2.73 billion
15	Sailun Group	USD 2.66 billion



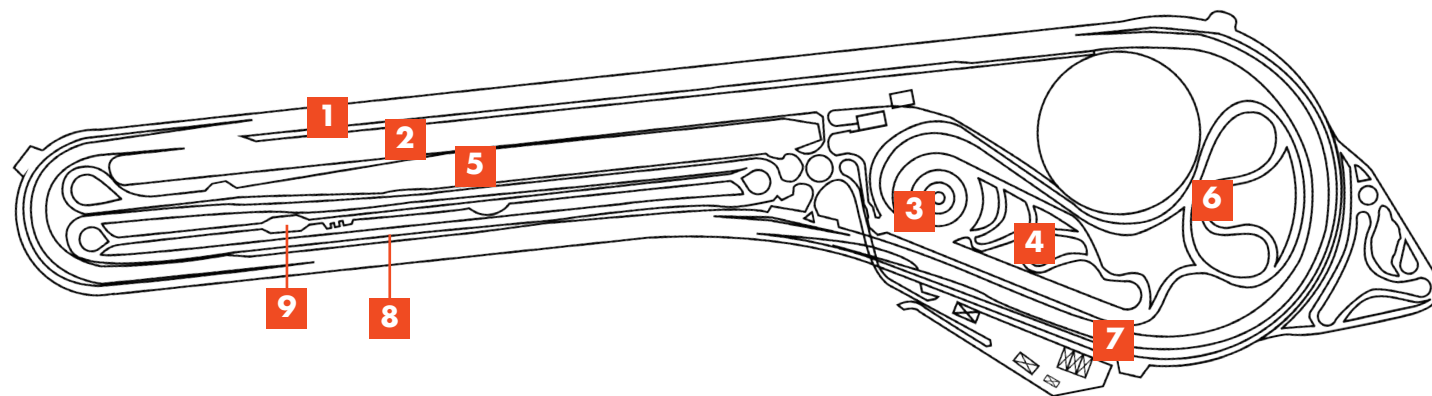
PROVING GROUND

As CST has grown, and research and development increased, the company decided to invest in a world class proving ground. Located near Shanghai, in the city of Kunshan, the Proving Ground opened in late 2012 at a cost of 150 million USD.

Built by specialist engineering companies from around the globe, the site is 860,000 square metres and is one of the most advanced proving grounds in China, with individual test areas for high-speed handling, braking, wet/dry handling and N.V.H. durability.

The high-speed test track features 45-degree banking in the corners, allowing the vehicle to maintain speeds of up to 210km/h. The test course also features state-of-the-art intelligent watering system that allows for precise control of water-film thickness for consistent wet-surface testing.

There are 13 different real-world road surfaces, allowing engineers to precisely engineer each tyre for its intended conditions. The track also features the only ISO 10844-2011 certified test course in China capable of conducting ISO testing for both China and Europe.



1 HIGH SPEED CIRCUIT

- Track length: 4.5km
- Width: 12-16m
- Surface: Asphalt
- Up to 280km/h banking at 45°

4 DRY HANDLING

- Track length: 2.8km
- Width: 6-9m
- Surface: Asphalt
- Cornering and handling

7 RIDE AND DURABILITY ROAD

- Track length: 4.6km
- Width: 7m
- Surface: Asphalt, concrete, stone
- Ride comfort, durability, cabin noise

2 DYNAMIC PLATFORM

- Track length: 1.5km
- Width: 40m
- Surface: Asphalt
- Dry handling/cornering, sliding stability

5 BRAKING TRACK

- Track length: 1.2km
- Test area: 200x45m
- Surface: Asphalt, concrete, ceramic
- Wet braking, control-loss simulation, ABS

8 N.V.H. TRACK

- Track length: 2.3km
- Width: 11m
- Surface: Asphalt, concrete
- Vibration, noise, ride comfort

3 WET CYCLE

- Diameter: 140m
- Surface: Asphalt, concrete, Belgian road
- Wet handling/wet cornering traction

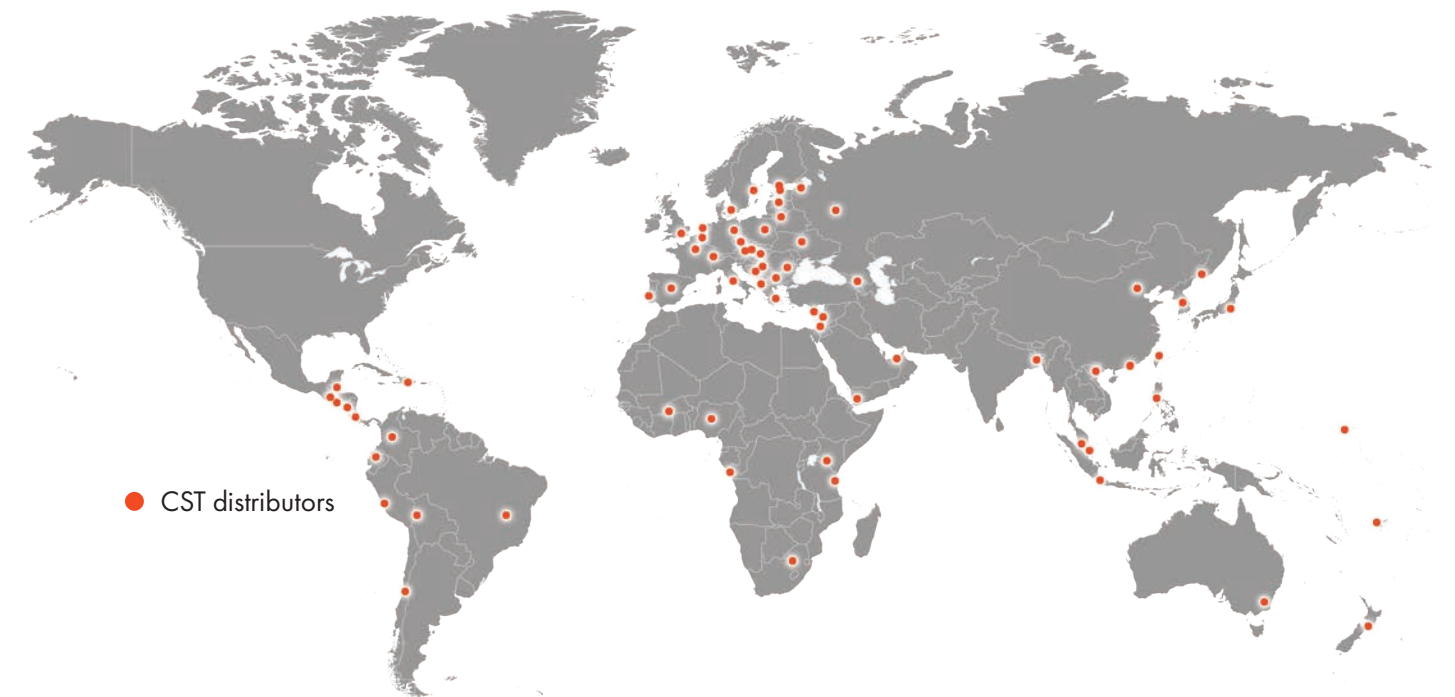
6 WET HANDLING

- Track length: 1.4km
- Width: 6m
- Surface: Asphalt
- Cornering and handling

9 ISO NOISE TRACK

- Track length: 40m
- Width: 20m
- Surface: Asphalt
- Road test surface standardised by ISO

CST PCR DISTRIBUTORS



OEM PARTNERS

WE ARE ALSO THE OEM TIRE SUPPLIER FOR MANY WELL-KNOWN BRANDS, INCLUDING:

CST BICYCLE:

- Giant
- Merida
- Bridgestone
- Continental
- Specialized
- Trek
- Decathlon

CST MOTORCYCLE:

- Honda
- Sym
- Yamaha
- Suzuki
- Kymco
- Piaggio
- CF Moto

CST ATV:

- Polaris
- John Deere
- Yamaha

CST FORKLIFT:

- Linde
- Heli
- H&C
- Mitsubishi
- Doosan
- BYD

MAXXIS CAR/SPARE TIRES:

- Mercedes Benz
- Volkswagen
- Infiniti
- Toyota
- Nissan
- Honda
- Lincoln
- Volkswagen
- Lincoln
- Ford
- Hyundai
- Kia
- Buick
- Chevrolet



A WORLD OF EXTREME 4X4 TEAMS

As a brand associated with professional racing and competitions, CST is dedicated to off-road tire technology innovation and new product development.

We have tires for your every adventure designed especially for a variety of hazardous terrains including rainforest, swamp, rock, gravel, snow, desert and wild lands.

From the highway to mud and all terrains in between, we have a full product range with a tire to meet each and every consumer demand.

The full tire size line-up also provides the best options for all SUV, pick up, light truck and modified vehicles.

Our sponsorship of 4X4 teams, races and events in Germany, Portugal, Holland, Italy, Malaysia and Columbia has significantly enhanced awareness of the CST brand and elevated its position worldwide.

With an array of trophies and titles won by CST tires and CST riders, we can proudly say CST is without doubt the choice of true champions.

To emphasise our dedication to and our spirit for sport and competition, CST ADVENTURE is our new trademark and brand strategy to promote CST off-road tires and UHP tires internationally.



TEAM: XTREME WILDCAT
DRIVER: Dirk Lewandowsky
CO-DRIVER: Marlon Lewandowsky
VEHICLE: Daihatsu Wildcat 1.8 Turbo
TIRE: 36X12.50-16 LAND DRAGON CL18

- 2012 Prototype Champion in Germany
- 2013 Prototype Champion in Germany
- 2015 Prototype Champion in Germany



TEAM: EMANUEL COSTA PREPARAÇÕES
DRIVER: Emanuel Costa
CO-DRIVER: Helder Rocha
VEHICLE: Jeep Wrangler
TIRE: LT315/70R17 SAHARA A/T II

- 2021 Iberia champion
- 2015 European Champion Ultra4
- 6 times National Champion in Portugal



TEAM: BAS AUTOSPORT
DRIVER: Bas van Driel
CO-DRIVER: Han van Goch
VEHICLE: Nissan Navara, Toyota Hilux
TIRE: LT265/75R16 SAHARA A/T II

- 2016 National Champion in the Netherlands
- 2018 National Champion in the Netherlands
- 2021 National Champion in the Netherlands



TEAM: RED TEAM
DRIVER: Simone Cognini
CO-DRIVER: Dario Lacchio
VEHICLE: Land Rover Discovery
TIRE: 35X10.50-16 LAND DRAGON CL18M

- NO.1 in Rainforest Challenge South Europe 2020
- NO.2 in Rainforest Challenge South Europe 2021
- NO.1 in Rainforest Challenge South Europe 2022



TEAM: TEAM 2 MONTI
DRIVER: Riccardo Tortolani
CO-DRIVER: Marco Giorgi
VEHICLE: Mitsubishi Pajero
TIRE: 36X12.50-16 LAND DRAGON CL18
 • NO.2 in Rainforest Challenge South Europe 2021



TEAM: PASSIONE MOTORI
DRIVER: Stefano Tironi
CO-DRIVER: Davida Tironi
VEHICLE: Jeep Wrangler
TIRE: 35X10.50-16 LAND DRAGON CL18M
 • NO.3 in Rainforest Challenge South Europe 2018



TEAM: FENIX RACING TEAM
DRIVER: Marco Piereccioli
CO-DRIVER: Marco Rindi
VEHICLE: Toyota KZJ
TIRE: 36X12.50-16 LAND DRAGON CL18
 • NO.5 in Rainforest Challenge South Europe 2021



TEAM: TEAM CST TIRES 4X4 MALAYSIA
TEAM DIRECTOR: Gerard Kiong
VEHICLE: Toyota Land Cruiser
TIRE: 35X10.50-16 LAND DRAGON CL18M

- NO.1 in Tasik Chini Challenge 2019, Malaysia
- NO.1 in GK Off-road Challenge 2019, Malaysia
- NO.2 in Rainforest Challenge 2019, Malaysia
- NO.1 in Arasniaga Challenge 2021, Malaysia
- NO.2 in Kota Belut Challenge 2021, Malaysia
- NO.1 in Modified production, RFC Grand Final, Malaysia 2022
- NO.1 in group below 3505cc diesel, RFC Grand Final, Malaysia 2022



TEAM: 4x4 TRAIL & WEEVIL
DRIVER: Jorge Sanchez
CO-DRIVER: Wilson Valencia
VEHICLE: Toyota Delta mini Cruiser
TIRE: 36X12.50-16 LAND DRAGON CL18

- NO.1 in Rainforest Challenge Ecuador, 2017
- NO.1 in Rainforest Challenge Grand Final, 2017
- NO.1 in off-road challenge Colombia, 2018
- NO.1 in Rainforest Challenge Ecuador, 2019
- NO.1 in Rainforest Challenge Grand Final, 2019



LIGHT TRUCK/SUV/4X4

CST ADVENTURE DRAGON CLAW CL21M

NEW

The impenetrably fierce tire fully armoured with ferocious grip

EXTREME MUD TERRAIN



UNRIVALLED TRACTION ON ALL TERRAINS



SUPERIOR DRIVE CONTROL



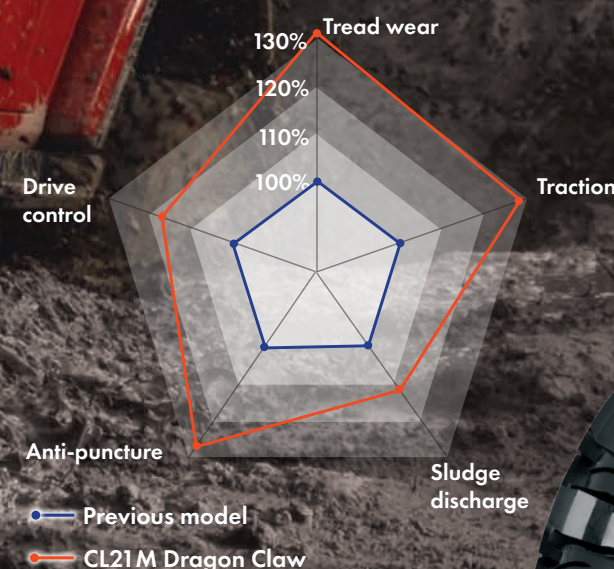
OUTSTANDING DURABILITY AND CUTTING AND ABRASION RESISTANCE



IMPRESSIVE TREAD WEAR FOR LONG LIFE

- Special tread compound for outstanding resistance to puncture and wear
- Rough lug pattern gives excellent traction
- Long lug provides strong rigidity for shoulder
- Lengthened sidewall with thickened dragon claw for excellent cut resistance and supports the vehicle to run freely under low air pressure

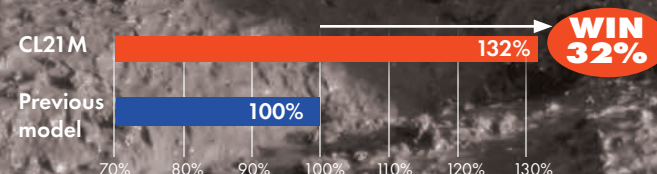
CL21M PERFORMANCE CHARACTERISTICS



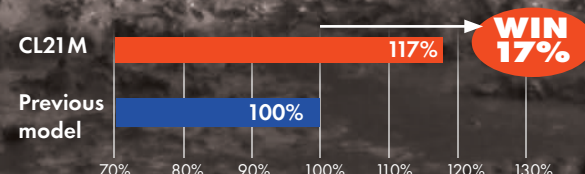
ANTI-PUNCTURE



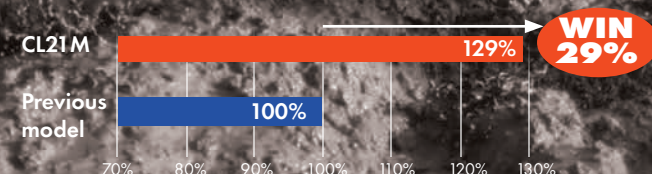
TREAD WEAR



DRIVE CONTROL



TRACTION



SLUDGE DISCHARGE



Rim	Size	Load/Speed Rating	Overall Diameter	Approved Rim Width (in)	Max Load (kg)	Max Pressure (PSI)
16	37X12.50-16 6PR	TBC	TBC	TBC	TBC	TBC
	39X12.50-16 6PR	115K*	39.6	9.5-(10.0)-10.5	1215	24

*POR = Professional off-road tire exempt from EU Labelling regulation

CST ADVENTURE

LAND DRAGON CL18M



SUPERB FOR EXTREME 4X4 SPORT



OUTSTANDING DURABILITY AND CUTTING AND ABRASION RESISTANCE



UNRIVALLED TRACTION ON ALL TERRAINS

- 3D block design and aggressive tread pattern deliver outstanding performance in off-road conditions
- Extended shoulders provide rim protection
- Armoured shoulder and wide grooves improve traction during transitions between differing terrains
- The special pattern design in the shoulder area optimises water and mud dispersal
- Specially developed compound delivers outstanding durability and cutting resistance in hazardous terrain



The toughest tires engineered and designed for the muddiest and swampiest terrain in the rainforest challenge in Malaysia



TEAM CST TIRES 4X4 MALAYSIA

- NO.1 in Hardcore, Tasik Chini Challenge 2019, Pahang, Malaysia
- NO.1 in GK Off-road Challenge 2019, Shah Alam, Malaysia
- NO.2 in Rainforest Challenge 2019, Terengganu, Malaysia
- NO.1 in Arasniaga Offroad Challenge 2021, Kedah, Malaysia
- NO.2 in Kota Belut Amature Challenge 2021, Sabah, Malaysia
- NO.1 in Modified production, RFC Grand Final Malaysia 2022
- NO.1 in group below 3505cc diesel, RFC Grand Final Malaysia 2022



RED TEAM

Simone Cognini & Dario Lacchio

- NO.1 in Rainforest Challenge South Europe 2020
- NO.2 in Rainforest Challenge South Europe 2021
- NO.1 in Rainforest Challenge South Europe 2022



Rim	Size	Load/Speed Rating	Overall Diameter	Approved Rim Width (in)	Max Load (kg)	Max Pressure (PSI)
16	35X10.50-16 6PR	108K*	36.2	8.0-(8.0)-9.0	1000	28

*POR = Professional off-road tire exempt from EU Labelling regulation

LAND DRAGON

CL18

Great for off-road adventure in swampy and muddy conditions



SUPERB FOR EXTREME 4X4 SPORT



OUTSTANDING DURABILITY AND CUTTING AND ABRASION RESISTANCE



UNRIVALLED TRACTION ON ALL TERRAINS

- 3D block design and aggressive tread pattern delivers outstanding performance in off-road conditions
- Armoured shoulder and wide grooves improve traction during transitions between different terrains
- The special pattern design in the shoulder area optimises water and mud dispersal
Extended shoulders provide rim protection
- Specially developed compound delivers outstanding durability and cutting resistance in hazardous terrain



TEAM: XTREME WILDCAT

DRIVER: Dirk Lewandowsky

CO-DRIVER: Marlon Lewandowsky

VEHICLE: Daihatsu Wildcat 1.8 Turbo

TIRE: 36X12.50-16 LAND DRAGON CL18

- 2012 Prototype Champion in Germany
- 2013 Prototype Champion in Germany
- 2015 Prototype Champion in Germany



Rim	Size	Load/Speed Rating	Overall Diameter	Approved Rim Width (in)	Max Load (kg)	Max Pressure (PSI)
15	33X11.50-15 6PR	115K*	33.3	8.5-(9.0)-9.5	1215	45
	35X12.50-15 6PR	113K*	35.0	9.5-(10.0)-10.5	1150	30
	38X12.50-15 6PR	115K*	37.8	9.5-(10.0)-10.5	1215	45
16	31X10.50-16 6PR	109K*	31.2	7.0 -(7.0)- 9.0	1030	45
	33X10.50-16 6PR	114K*	33.3	7.0- (7.0)- 9.0	1180	45
	35X10.50-16 6PR	119K*	34.9	7.0 -(7.0)- 9.0	1360	45
	36X12.50-16 6PR	112K*	36.5	9.5-(10.0)-10.5	1120	30

*POR = Professional off-road tire exempt from EU Labelling regulation

M-KING

CL98
CL28

Tires that are truly at home in the wet and the mud

The M-King C98 and CL28 deliver everything you need and more for extreme off-roading – incredible grip and traction, assured reliability and durability, all with an added injection of adrenaline-fuelled excitement.



IDEAL FOR EXTREME 4X4 SPORT



SUPERB TRACTION ON ALL TERRAINS



OUTSTANDING DURABILITY

CL98

- Widened sidewall blocks improve puncture resistance
Grooves within blocks reduce tire weight for improved control
- Fluid directional tread pattern delivers excellent sludge discharge performance
- Large shoulder blocks strengthen grounding position and offer improved anti-chunking properties

CL28

- Straightforward and directional pattern design provides excellent traction and control
- Delivers superb water and mud dispersal
Excellent self-cleaning properties
- Special tread compound for outstanding resistance to puncture and wear

**CL98**

Rim	Size	Load/Speed Rating	Overall Diameter	Approved Rim Width (in)	Max Load (kg)	Max Pressure (PSI)
15	31X10.50-15 6PR	TBC	TBC	TBC	TBC	TBC
	33X10.50-15 6PR	115K*	33.1	8.0-(8.5)-9.0	1215	45
	35X11.50-15 6PR	TBC	TBC	TBC	TBC	TBC
16	33X11.50-16 6PR	TBC	TBC	TBC	TBC	TBC
	35X11.50-16 6PR	120K*	35.9	9.0-(9.5)-9.5	1400	45
17	31X10.50-17 6PR	100K*	31.7	7.0-(7.0)-9.0	800	30

CL28

Rim	Size	Load/Speed Rating	Overall Diameter	Approved Rim Width (in)	Max Load (kg)	Max Pressure (PSI)
16	32X10.50-16 6PR	114K*	32.0	7.0-(7.0)-9.0	1180	45

*POR = Professional off-road tire exempt from EU Labelling regulation

SAHARA AT318

NEW

All-terrain capability and comfort and quieter on the road



IMPRESSIVE TRACTION ON ALL TERRAINS

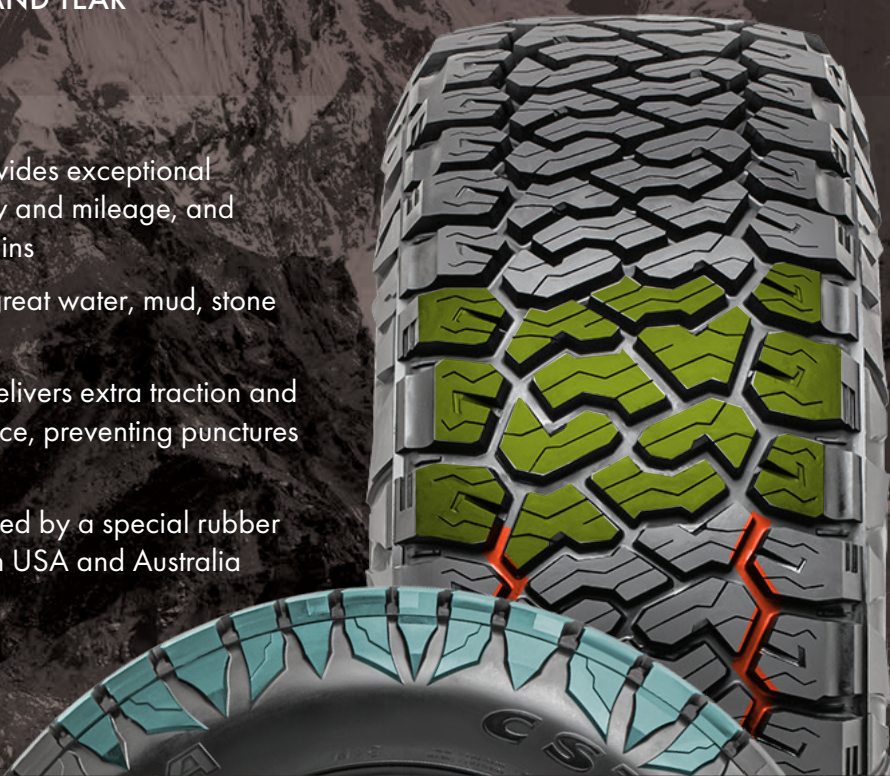


BUILT FOR DURABILITY AND LONG LIFE



EXCELLENT PUNCTURE AND TEAR RESISTANCE

- Optimised pattern design provides exceptional cut resistance, better durability and mileage, and impressive traction on all terrains
- Wide zig-zag grooves offer great water, mud, stone and snow dispersal
- Tiger-tooth shoulder design delivers extra traction and provides excellent cut resistance, preventing punctures under hazardous conditions
- The tire shoulder area is covered by a special rubber for professional competition in USA and Australia



Rim	Size	Load/Speed Rating	Approved Rim Width (in)	Max Load (kg)	Max Pressure (PSI)
17	LT265/65R17 10PR	120/117S	7.5-(8.0)-8.5	1400/1285	80
	LT275/65R17 10PR	121/118R	7.5-(8.0)-8.5	1450/1320	80
	LT265/70R17 10PR	121/118S	7.5-(8.0)-8.5	1450/1320	80
	LT285/70R17 10PR	121/118S	7.5-(8.5)-9.5	1450/1320	80
18	LT265/60R18 10PR	119/116S	7.5-(8.0)-9.5	1360/1250	80
	LT285/60R18 10PR	122/119S	8.0-(8.0)-10.0	1500/1360	80
	LT265/65R18 10PR	122/119R	7.5-(8.0)-8.5	1500/1360	80
	LT285/65R18 10PR	125/122S	8.0-(8.5)-9.0	1650/1500	80
	LT265/70R18 10PR	124/121S	7.5-(8.0)-8.5	1600/1450	80

Rim	Size	Load/Speed Rating	Approved Rim Width (in)	Max Load (kg)	Max Pressure (PSI)
17	LT265/65R17 10PR	120/117Q*	7.5-(8.0)-8.5	1400/1285	80
	LT275/65R17 10PR	121/118Q*	7.5-(8.0)-8.5	1450/1320	80
	LT265/70R17 10PR	121/118Q*	7.5-(8.0)-8.5	1450/1320	80
	LT285/70R17 10PR	121/118Q*	7.5-(8.5)-9.5	1450/1320	80
18	LT265/60R18 10PR	119/116Q*	7.5-(8.0)-9.5	1360/1250	80
	LT285/60R18 8PR	118/115Q*	8.0-(8.0)-10.0	1500/1360	80
	LT265/65R18 8PR	117/114Q*	7.5-(8.0)-8.5	1500/1360	80
	LT285/65R18 8PR	121/118Q*	8.0-(8.5)-9.0	1650/1500	80
	LT265/70R18 8PR	119/116Q*	7.5-(8.0)-8.5	1600/1450	80

*POR = Professional off-road tire exempt from EU Labelling regulation

SAHARA MT II

80% OFF ROAD ON ROAD 20%

Toughest tires for the wildest of adventure

- 3D block design, inspired by a ram's hoof, increases strength and durability and enhances the ability to expel mud and debris

INSPIRED BY NATURE

- Grooved rib design delivers extra traction
- 3D block stepped edges improve mud and stone dispersal
- Tread's 3D blocks and pattern rigidity increase durability
- Heat dissipation design minimises sudden heat changes to prevent compound deterioration
- Aggressive armoured sidewall for strong traction and enhanced strength



Rim	Size	Load/Speed Rating	Sidewall	Approved Rim Width (in)	Max Load (kg)	Max Pressure (PSI)
15	31X10.50R15 LT 6PR	109Q*	OOL	7.0-(8.5)-9.0	1030	50
	32X11.50R15 LT 6PR	113Q*	OOL	8.0-(9.0)-10.0	1150	50
	33X12.50R15 LT 6PR	108Q*	OOL	8.5-(10.0)-11.0	1000	35
	LT235/75R15 6PR	104/101Q*	OOL	6.0-(6.5)-7.0	S900/D825	50
16	LT245/75R16 6PR	108/104Q*	OOL	6.5-(7.0)-7.5	S1000/D900	50
	LT245/75R16 10PR	120/116Q*	OOL	6.5-(7.0)-8.0	S1400/D1250	80
	LT265/75R16 8PR	119/116Q*	OOL	7.0-(7.5)-8.0	S1360/D1250	65
	LT265/75R16 10PR	123/120Q	OOL	7.0-(7.5)-8.0	S1550/D1400	80
	LT285/75R16 6PR	116/113Q*	OOL	7.5-(8.0)-8.5	S1250/D1150	50
17	LT285/75R16 8PR	122/114Q*	OOL	7.5-(8.0)-8.5	S1500/D1360	65
	LT265/65R17 8PR	117/114Q*	OOL	7.5-(8.0)-9.5	S1285/D1180	65
	LT285/70R17 8PR	121/118Q*	OOL	7.5-(8.0)-9.0	S1450/D1320	65

NEW

*POR = Professional off-road tire exempt from EU Labelling regulation

OOL = Orange Outline Lettering

SAHARA ATM

60% OFF ROAD ON ROAD 40%

Rock, stone, gravel, sand – it conquers them all



- Wider tread width and tire profile delivers prolonged mileage
- 3D zig-zag tread design maximises off-road traction and stability
- Optimised pattern design for longer life
- Extended grooves in the tire shoulder deliver excellent traction in off-road conditions
- Special shoulder design gives extra grip and traction on hazardous road surfaces and difficult off-road conditions
- Special armoured shoulder design provides extra protection to prevent puncture and damage, giving excellent traction on snow, mud, rock terrain
- Highly rigid steel belts deliver outstanding driving stability and load capacity



'Built to withstand the harsh terrains that we experience...'



Rim	Size	Load/Speed Rating	Sidewall	Approved Rim Width (in)	Max Load (kg)	Max Pressure (PSI)
16	LT245/70R16 8PR	113/110Q*	RBL	6.5-(7.0)-7.5	1150/1060	65
17	LT265/65R17 10PR	120/117Q*	RBL	7.5-(8.0)-9.5	1400/1285	65
18	LT265/60R18 8PR	114/110Q*	RBL	7.5-(8.0)-9.5	1180/1060	65
	LT265/60R18 10PR	119/116Q*	RBL	7.5-(8.0)-9.5	1360/1250	80

*POR = Professional off-road tire exempt from EU Labelling regulation

RBL = Raised Black Lettering

SAHARA A/T II

40% OFF ROAD ON ROAD 60%

Ultimate traction on all terrains

- 3D block pattern inspired by amoeba structures delivers excellent performance in all terrains
- Square tire profile design provides a flat contact patch with high load capacity
- Special pattern designed with jagged edges for extra traction to maximise off-road performance
- The tread pattern's void ratio is reduced to optimise tire mileage and tread life
- Unique orange outline lettering on the sidewall adds eye-catching colour to your vehicle
- Rib design along the aggressive shoulder design provides sidewall protection and added puncture resistance



TEAM: BAS AUTOSPORT
DRIVER: Bas van Driel
CO-DRIVER: Han van Goch
VEHICLE: Nissan Navara, Toyota Hilux
TIRE: LT265/75R16 SAHARA A/T II

- 2016 National Champion in the Netherlands
- 2018 National Champion in the Netherlands
- 2021 National Champion in the Netherlands



Rim	Size	Load/Speed Rating	Sidewall	Approved Rim Width (in)	Max Load (kg)	Max Pressure (PSI)
15	30X9.5R15 LT 6PR	104Q*	OOL	6.5-(7.5)-8.5	900	50
	31X10.50R15 LT 6PR	109Q*	OOL	7.0-(8.5)-9.0	1030	50
16	245/70R16	111T	OOL	6.5-(7.0)-8.0	1090	50
	255/70R16	111T	OOL	6.5-(7.5)-8.5	1090	44
	265/70R16	112T	OOL	7.0-(8.0)-9.0	1120	44
	LT235/70R16 6PR	104/101Q*	OOL	6.0-(7.0)-7.5	S900/D825	50
	LT265/70R16 8PR	117/114Q*	OOL	7.0-(8.0)-8.5	S1285/D1180	65
	LT245/75R16 6PR	108/104Q*	OOL	6.5-(7.0)-8.0	S1000/D910	50
	LT265/75R16 8PR	119/116Q*	OOL	7.0-(7.5)-8.0	S1360/D1250	65
	LT265/75R16 10PR	123/120Q	OOL	7.0-(7.5)-8.0	S1550/D1400	80
	LT285/75R16 6PR	116/113Q*	OOL	7.5-(8.0)-9.0	S1250/D1150	50
	LT305/70R16 8PR	118/115Q*	OOL	8.0-(9.0)-9.5	S1320/D1215	50
17	LT315/75R16 8PR	121Q*	OOL	8.0-(8.5)-11.0	1450	50
	265/65R17	112T	OOL	7.5-(8.0)-9.5	1120	44
	LT265/70R17 10PR	121/118Q*	OOL	7.0-(8.0)-8.5	S1450/D1320	80
	LT285/70R17 8PR	121/118Q*	OOL	7.5-(8.5)-9.0	S1450/D1320	65
	LT305/70R17 8PR	119/116Q*	OOL	8.0-(9.0)-9.5	S1360/D1250	50
18	LT315/70R17 8PR	121/118Q*	OOL	8.0-(9.5)-11.0	S1450/D1320	65
	265/60R18	110T	OOL	7.5-(8.0)-9.5	1060	44
	LT285/60R18 8PR	118/115Q*	OOL	8.0-(8.5)-10.0	S1320/D1215	65
	LT265/70R18 10PR	124/121S	OOL	7.0-(8.0)-9.0	S1600/S1450	80
	LT275/70R18 10PR	125/122S	OOL	7.0-(8.0)-8.5	S1650/D1500	80

*POR = Professional off-road tire exempt from EU Labelling regulation OOL = Orange Outline Lettering UTQG rating 680 A B

SAHARA ATS

20% OFF ROAD ON ROAD 80%

The road 4x4 tire that's ready for off-road fun

- Four main vertical grooves offer outstanding water dispersal to prevent the risk of aquaplaning
- Bridges and sipes in the shoulder's grooves minimise noise and road surface impact for a quiet, comfortable ride
- Extra lateral grooves and sipes enhance comfort for a great driving experience
- Compared with the previous model, the ATS has wider tread and tire profile for better appearance and more mileage



Rim	Size	Load/Speed Rating	Sidewall	Approved Rim Width (in)	Max Load (kg)	Max Pressure (PSI)
15	215/75R15	100T	BSW	5.5-(6.0)-7.0	800	44
	235/75R15	109T	BSW	6.0-(6.5)-8.0	1030	50
16	215/65R16	98H	BSW	6.0-(6.5)-7.5	750	44
	235/70R16	109H XL	BSW	6.0-(7.0)-8.0	1030	50
	245/70R16	111H XL	BSW	6.5-(7.0)-8.0	1090	50
	255/70R16	111H	BSW	6.5-(7.5)-8.5	1090	44
	265/70R16	112H	BSW	7.0-(8.0)-9.0	1120	44
17	225/60R17	103H XL	BSW	6.0-(6.5)-8.0	875	50
	225/65R17	102H	BSW	6.0-(6.5)-8.0	850	44
	245/65R17	111H XL	BSW	6.5-(7.0)-8.5	1090	50
	265/65R17	112H	BSW	7.5-(8.0)-9.5	1120	44
18	245/70R17	114H XL	BSW	6.5-(7.0)-8.0	1180	50
	265/60R18	114H XL	BSW	7.5-(8.0)-9.5	1180	50

*POR = Professional off-road tire exempt from EU Labelling regulation BSW = Black Sidewall UTQG rating 840 A A

SAHARA CS912

A robust tire for rugged terrain



- The staggered shoulder design enhances water dispersal, improving grip in muddy conditions
 - Multiple tread blocks enhance tread rigidity without compromising the comfort of the ride
 - 3D block tread design provides excellent tread rigidity and traction in hazardous conditions
- Excellent tread wear properties and resistance to cutting
- Inverted angle grooves prevent stone retention, enhancing water dispersal and reduce tire noise



Rim	Size	Load/Speed Rating	Sidewall	Approved Rim Width (in)	Max Load (kg)	Max Pressure (PSI)
14	215/75R14	100S	BSW	5.5-(6.0)-6.5	800	44
15	225/70R15	100S	BSW	6.0-(6.5)-7.0	800	44
	255/70R15	108T	BSW	6.5-(7.5)-8.5	1000	44
	265/70R15	112S	BSW	7.0-(8.0)-9.0	1120	44
	225/75R15	102S	BSW	6.0-(6.0)-7.5	850	44
	LT215/75R15 6PR	100/97S	BSW	5.5-(6.0)-7.0	S800/D730	50
16	LT235/75R15 6PR	104/101S	BSW	6.0-(6.5)-8.0	S900/D825	50
	235/60R16	104H XL	BSW	6.5-(7.0)-8.5	900	50
	235/70R16	106T	BSW	6.0-(7.0)-8.0	950	44
	245/70R16	107T	BSW	6.5-(7.0)-8.0	975	44
	255/70R16	111T	BSW	6.5-(7.5)-8.5	1090	44
	265/70R16	112T	BSW	7.0-(8.0)-9.0	1120	44
	LT245/75R16 6PR	108/104S	BSW	6.0-(7.0)-8.0	S1000/D900	50
17	205R16C 8PR	110/108Q*	BSW	5.5-(6.0)-6.5	S1060/D1000	65
	235/65R17	104T	BSW	6.5-(7.0)-8.5	900	44
	275/65R17	115T	BSW	7.5-(8.0)-9.5	1215	44

*POR = Professional off-road tire exempt from EU Labelling regulation BSW = Black Sidewall UTQG rating 500 A B

VOYAGE VA76

Resilient, reliable and ready for the desert



- Mixed pattern design provides excellent stability and avoids irregular wear in hazardous road conditions
- Lug-grooves on tire shoulders give extra traction
- Zigzag grooves design offers outstanding traction and water dispersal



Rim	Size	Load/Speed Rating	Sidewall	Approved Rim Width (in)	Max Load (kg)	Max Pressure (PSI)
16	7.50R16 8PR	114/112S	BSW	5.5-(6.0)-6.5	1180	69

BSW = Black Sidewall



PERFORMANCE CAR/SUV

ADRENO AD-R9 RFT

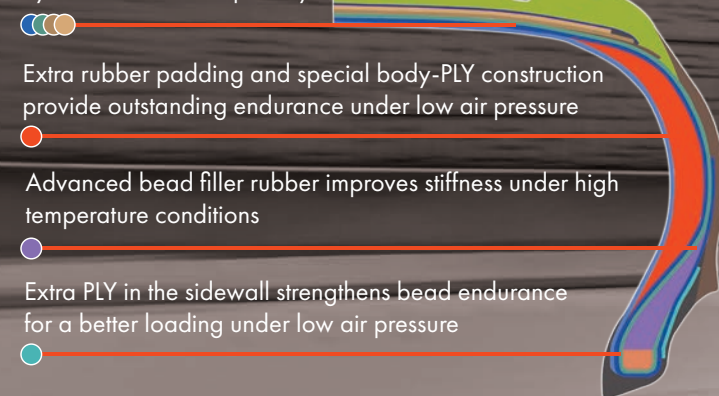
NEW

CST's AD'R9 run-flat technology – the safe and reliable alternative for cars that don't include a spare tyre

A properly inflated tyre supports the weight of a vehicle primarily with the sidewall. Driving with low or zero inflation pressure puts additional stress on the sidewall, which can cause sudden sidewall failure. This is especially critical for front-wheel-drive cars, where front tire failures can often lead to total loss of control.

Run-flat tires allow vehicles to travel at 80km/h for a distance of 80 kilometres even with zero air pressure, delivering extra safety and peace of mind until the tire is repaired or replaced at the earliest possible opportunity.

High stiffness steel belts enhance tire structure and stability by minimising the deformation by flat tire for a safe journey



IMPRESSIVE HANDLING



INCREASED COMFORT



MINIMAL TIRE NOISE



REDUCED AQUAPLANING



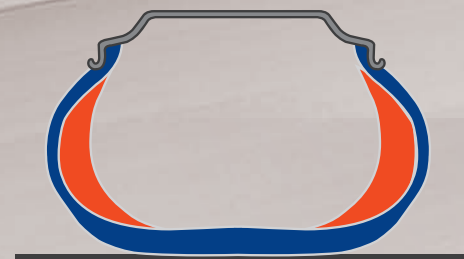
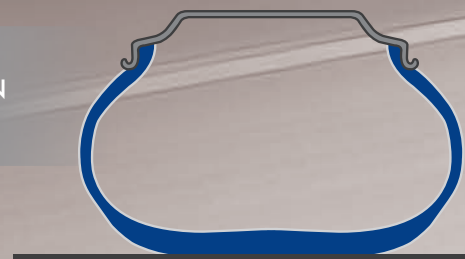
SHORT BRAKING DISTANCES



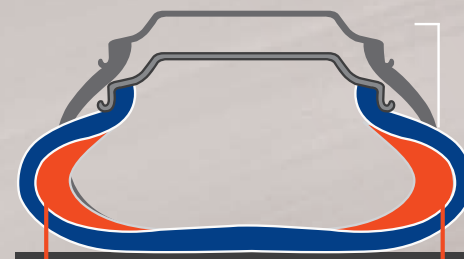
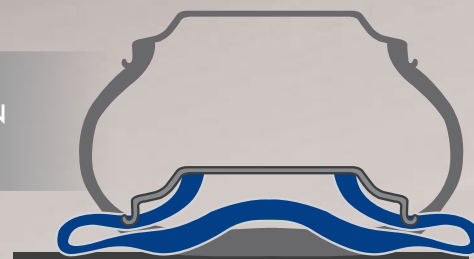
TRADITIONAL TYRE

AD-R9 RUN-FLAT TECHNOLOGY

PROPER
INFLATION
PRESSURE



ZERO
INFLATION
PRESSURE



Run-flat capability facilitated by reinforced section of the sidewalls

AD-R9 RFT

Rim	Size	Load/Speed Rating	Approved Rim Width (in)	Max Load (kg)	Max Pressure (PSI)
16	205/55ZRF16	91W	5.5-(6.5)-7.5	615	36.3
	225/45ZRF17	91W	7.0-(7.5)-8.5	615	36.3
17	225/50ZRF17	94W	6.0-(7.0)-8.0	670	36.3
	225/55ZRF17	97W	6.0-(7.0)-8.0	730	36.3
18	225/45ZRF18	91W	7.0-(7.5)-8.5	615	36.3
	245/45ZRF18	96W	7.5-(8.0)-9.0	710	36.3
	245/50ZRF18	104Y XL	7.0-(7.5)-8.5	900	42.1
	255/55ZRF18	109V XL	7.0-(8.0)-9.0	1030	42.1
19	255/50ZRF19	107Y XL	7.0-(8.0)-9.0	975	42.1
	235/55RF19	101V	6.5-(7.5)-8.5	825	36.3

UTQG rating 280 AA A

ADRENO

AD-R9/AD-R9 SUV



IMPRESSIVE HANDLING



INCREASED COMFORT



MINIMAL TIRE NOISE



REDUCED AQUAPLANING



SHORT BRAKING DISTANCES

A new level in sports performance

Designed to deliver better handling at high speeds

Full-silica tread compound for excellent wet and dry grip

3+1 circumferential grooves reduce noise and the risk of aquaplaning

Special curved tread for better water dispersal

Closed shoulder design reduces noise levels

New steel belt construction absorbs impact, providing more comfort



AD-R9

Rim	Size	Load/Speed Rating	Approved Rim Width (in)	Max Load (kg)	Max Pressure (PSI)	RR	WG	Noise dB
18	215/40ZR18	89Y XL	7.0-(7.5)-8.0	580	50	-	-	-
	225/40ZR18	92W XL	7.5-(8.0)-8.5	630	50	C	A	B 71
	225/40ZR18	92Y XL	7.5-(8.0)-8.5	630	50	C	A	B 71
	245/40ZR18	97Y XL	8.0-(8.5)-9.0	730	50	C	A	B 71
	225/45ZR18	95W XL	7.0-(7.5)-8.0	690	50	C	A	B 71
	225/45ZR18	95Y XL	7.0-(7.5)-8.0	690	50	C	A	B 71
	235/45ZR18	98W XL	7.5-(8.0)-8.5	750	50	C	A	B 71
	235/45ZR18	98Y XL	7.5-(8.0)-8.5	750	50	C	A	B 71
	245/45ZR18	100W XL	7.5-(8.0)-8.5	800	50	C	A	B 71
	245/45ZR18	100Y XL	7.5-(8.0)-8.5	800	50	C	A	B 71
19	245/50ZR18	104Y XL	7.0-(7.5)-8.0	900	50	C	A	B 71
	225/40ZR19	93Y XL	7.5-(8.0)-8.5	650	50	-	-	-
	245/40ZR19	98Y XL	8.0-(8.5)-9.0	750	50	C	A	B 71
	255/40ZR19	100Y XL	8.5-(9.0)-9.5	800	50	C	A	B 71
	225/45ZR19	92W	7.0-(7.5)-8.0	630	50	C	A	B 71
	225/45ZR19	96Y XL	7.0-(7.5)-8.0	710	50	C	A	B 71
20	245/45ZR19	102Y XL	7.5-(8.0)-8.5	850	50	C	A	B 71
	245/40ZR20	99Y XL	8.0-(8.5)-9.0	755	50	-	-	-

NEW

NEW

NEW

UTQG rating 280 AA A

AD-R9 SUV

Rim	Size	Load/Speed Rating	Approved Rim Width (in)	Max Load (kg)	Max Pressure (PSI)	RR	WG	Noise dB
18	235/50ZR18	101W XL	6.5-(7.5)-8.5	825	50	C	A	B 71
	235/60ZR18	107W XL	6.5-(7.0)-8.5	975	50	B	B	B 71
	245/60R18	105V	7.0-(7.0)-8.5	925	44	C	B	B 71
19	235/45ZR19	95Y	7.5-(8.0)-8.5	690	51	C	A	B 71
	235/50ZR19	99W	6.5-(7.5)-8.5	775	51	C	A	B 71
	255/50ZR19	107Y XL	7.0-(8.0)-9.0	975	50	C	A	B 71
	225/55R19	99V	6.5-(7.0)-7.5	775	44	C	A	B 71
	235/55ZR19	101Y	6.5-(7.5)-8.5	825	51	C	A	B 71
	245/55R19	103V	7.0-(7.5)-8.5	875	44	C	A	B 71
20	255/55R19	107V	7.0-(8.0)-9.0	975	44	C	A	B 71
	245/45ZR20	103Y XL	7.5-(8.0)-9.0	875	50	C	A	B 71
	255/45ZR20	105W XL	8.0-(8.5)-9.5	925	50	C	A	B 71
	255/50ZR20	109Y XL	7.0-(8.0)-9.0	975	50	C	A	B 71
	235/55ZR20	105W XL	6.5-(7.5)-8.5	925	50	B	A	B 71

ST = Suede Touch



Outstanding appearance with new "Suede Touch" sidewall technology.

UTQG rating 280 AA A

ST
ST

ADRENO AD-R8

The pinnacle of performance

EXCELLENT HIGH-SPEED HANDLING AND STABILITY

- High-rigidity central ribs improve straight-line acceleration and handling at high speed
- Enhanced tire body structure provides great stability at higher speeds

OUTSTANDING BRAKING ABILITY ON WET SURFACES FOR EXTRA SAFETY

- Tread surface with 3+1 circumferential grooves minimises risk of aquaplaning
- High-silica compound improves wet braking results, shortening braking distances in wet conditions

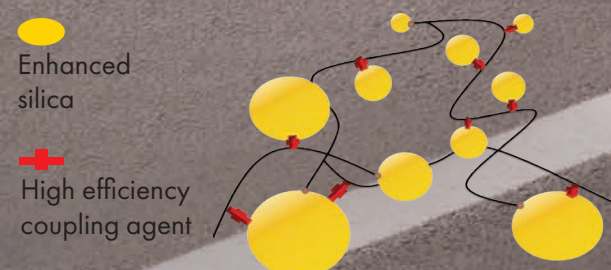
REDUCED TIRE NOISE AND RESONANCE

- Outer closed groove design reduces noise for a quieter ride
- Waved groove wall reduces air vibrations



AD-R8 COMPOUND TECHNOLOGY

Utilising the latest generation of enhanced silica, combined with a sophisticated rubber compound and a high-efficiency coupling agent, provides a perfect balance of performance between traction and tread life without sacrificing excellence in handling



EXCELLENT HANDLING AND STABILITY



OUTSTANDING WET BRAKING



A QUIETER DRIVING EXPERIENCE



INCREASED COMFORT



Rim	Size	Load/Speed Rating	Approved Rim Width (in)	Max Load (kg)	Max Pressure (PSI)	RR	WG	Noise dB
17	255/60R17	106V	7.0-(7.5)-9.0	950	44	D	B	B 72
	225/65R17	102V	6.0-(6.5)-8.0	850	44	C	B	B 71
18	255/55ZR18	109W XL	7.0-(8.0)-9.0	1030	50	C	B	B 73
	255/60R18	112V XL	7.0-(7.5)-9.0	1120	50	C	B	B 73
	265/60R18	110V	7.5-(8.0)-9.5	1060	44	C	B	B 72
	285/60R18	120V XL	8.0-(8.5)-10.0	1400	50	C	B	B 73
	235/65R18	106V	6.5-(7.0)-7.5	950	44	D	B	B 71
	275/40ZR20	106W XL	9.0-(9.5)-11.0	950	50	C	B	B 73
20	275/45ZR20	110W XL	8.5-(9.0)-10.5	1060	50	C	B	B 73
	245/50ZR20	102W	7.0-(7.5)-8.5	850	51	D	B	B 71
	265/50ZR20	111W XL	7.5-(8.5)-9.5	1090	50	C	B	B 73
	275/50ZR20	109W	7.5-(8.5)-9.5	1030	51	C	B	B 72
	285/50R20	116V XL	8.0-(9.0)-10.0	1250	50	C	B	B 73
	305/50R20	120V XL	8.5-(9.5)-11.0	1400	50	C	B	B 73
	255/55ZR20	110W XL	7.0-(8.0)-9.0	1060	50	C	B	B 73
	275/55R20	117V XL	7.5-(8.5)-9.5	1285	50	C	B	B 73

UTQG rating 280 AA A

PASSENGER CAR/SUV



CST

MEDALLION

MD-A7/MD-A7 SUV



OUTSTANDING HANDLING AND BRAKING



COMFORTABLE DRIVING EXPERIENCE



AN ESPECIALLY PEACEFUL DRIVE



IMPRESSIVE WET BRAKING

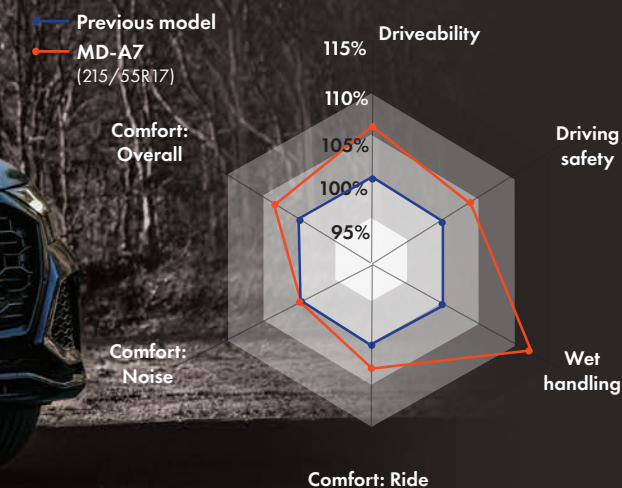


Engineered for extra quietness and performance

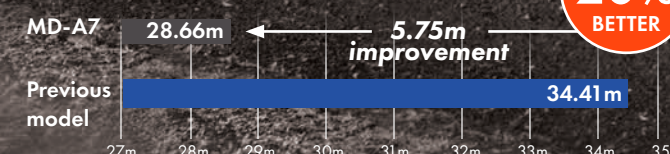
- Special sipes design improves the mechanics of motion fluidity to optimise smoother driving stability at high speeds
- New shock-absorbing technology provides optimal comfort for an enjoyable journey
- New groove design with closed-shoulders lowers air vibration and noise resonance for a quite ride
- Advanced full-silica tread compound and special pattern design with curve tread improve water dispersal in wet conditions for a remarkable wet braking and safety



MD-A7 PERFORMANCE CHARACTERISTICS



WET BRAKING PERFORMANCE



DRY BRAKING PERFORMANCE



MD-A7

Rim	Size	Load/Speed Rating	Approved Rim Width (in)	Max Load (kg)	Max Pressure (PSI)	RR	WG	Noise dB
16	195/55 R16	91V XL	5.5-(6.0)-7.0	615	50	C	A	A 68
	205/55R16	91V	5.5-(6.5)-7.5	615	44	C	A	A 68
	205/55 ZR16	91W	5.5-(6.5)-7.5	615	51	C	A	A 68
	205/55 ZR16	94W XL	5.5-(6.5)-7.5	670	50	C	A	A 68
	215/55 R16	97V XL	6.0-(7.0)-7.5	730	50	C	A	A 68
	205/60 R16	96V XL	5.5-(6.0)-7.5	710	50	C	A	A 68
	215/60 R16	99V XL	6.0-(6.5)-7.5	775	50	C	A	A 68
	205/65 R16	95V	5.5-(6.0)-7.5	690	44	C	A	A 68
17	205/50 ZR17	93W XL	5.5-(6.5)-7.5	650	50	C	A	A 68
	215/50 ZR17	95W XL	6.0-(7.0)-7.5	690	50	C	A	A 68
	225/50 ZR17	98W XL	6.0-(7.0)-8.0	750	50	C	A	A 68
	205/55 ZR17	95W XL	5.5-(6.5)-7.5	690	50	C	A	A 68
	225/55 ZR17	101W XL	6.0-(7.0)-8.0	825	50	C	A	A 68

ST
ST
ST
ST

MD-A7 SUV

Rim	Size	Load/Speed Rating	Approved Rim Width (in)	Max Load (kg)	Max Pressure (PSI)	RR	WG	Noise dB
16	215/65 R16	102H XL	6.0-(6.5)-7.5	850	50	C	A	A 68
	235/55 ZR17	103W XL	7.0-(7.5)-8.0	875	50	C	A	A 68
17	215/60 R17	96V	6.0-(6.5)-7.5	710	44	C	A	A 68
	225/60 R17	99V	6.0-(6.5)-8.0	775	44	C	A	A 68
	215/65 R17	99V	6.0-(6.5)-7.5	775	44	C	A	A 68
	235/65 R17	108V XL	6.5-(7.0)-8.5	1000	50	C	A	A 68
18	215/55 R18	99V XL	6.0-(7.0)-7.5	775	50	C	A	A 68
	225/55 R18	98V	6.0-(7.0)-8.0	750	44	C	A	A 68
	235/55 ZR18	100W	6.5-(7.5)-8.5	800	44	C	A	A 68
	225/60 R18	104V XL	6.0-(6.5)-8.0	900	50	C	A	A 68

ST = Suede Touch



Outstanding appearance with new "Suede Touch" sidewall technology.

UTQG rating 320 AA A

MEDALLION MD-A1

Comfort and safety in harmony

The Medallion MD-A1 is designed for premium cars, and to deliver great comfort, low noise levels and excellent driving quality.



PEACEFUL DRIVE

Noise and vibration are reduced through the lateral grooves and special pattern design. The closed-shoulder groove design also reduces noise and resonance.



OUTSTANDING HANDLING AND BRAKING

Semi-silica compound technology delivers excellent handling and braking capability while also providing great fuel efficiency.



COMFORTABLE DRIVING

Specially designed sipes on the tread and shoulder absorb impact from road surfaces for a comfortable ride.



EXCELLENT HANDLING AND BRAKING



REDUCED NOISE AND VIBRATION



A COMFORTABLE RIDE

- Central rib enhances tire rigidity, providing extra stability and a safer drive
- Closed-shoulder groove design reduces noise and resonance
- Double-angled shoulder grooves improve water dispersal and reduce the risk of aquaplaning
- Special pitch arrangement reduces noise from air vibration



Rim	Size	Load/Speed Rating	Approved Rim Width (in)	Max Load (kg)	Max Pressure (PSI)	RR	WG	Noise dB
15	165/50R15	73V	4.5-(5.0)-5.5	365	44	-	-	-
	195/50R15	86V XL	5.5-(6.0)-6.5	500	50	C	B	B 71
16	165/45R16	74V XL	5.0-(5.5)-6.0	375	50	-	-	-
	195/45R16	84V XL	6.0-(6.5)-7.5	500	50	C	B	B 71
	205/45ZR16	87W XL	6.5-(7.0)-7.5	545	50	C	B	B 71
	215/45R16	90V XL	7.0-(7.0)-8.0	600	50	C	B	B 71
	195/50R16	88V XL	5.5-(6.0)-7.0	560	50	C	B	B 71
	205/50ZR16	91W XL	5.5-(6.5)-7.5	545	44	C	B	B 71
	225/50R16	92V	6.0-(7.0)-8.0	630	44	C	B	B 71
	185/55R16	83V	5.0-(6.0)-6.5	487	44	C	B	B 71
	195/55R16	87V	5.5-(6.0)-7.0	545	44	C	B	B 71
	225/55R16	95V	6.0-(7.0)-8.0	690	44	C	B	B 71
	195/60R16	89V	5.5-(6.0)-6.5	580	44	C	B	B 71
	225/60R16	98V	6.0-(6.5)-8.0	750	44	C	B	B 71
17	195/45R17	85W XL	6.0-(6.5)-7.5	515	50	C	B	B 71
	205/45ZR17	88Y XL	6.0-(6.5)-7.0	560	50	C	B	B 71
	215/45R17	91W XL	7.0-(7.0)-8.0	615	50	C	B	B 71
	225/45ZR17	94W XL	7.0-(7.5)-8.5	670	50	C	B	B 71
	225/45R17	94Y XL	7.0-(7.5)-8.5	670	50	C	B	B 71
	235/45ZR17	97W XL	7.5-(8.0)-8.5	730	50	C	B	B 71
	245/45ZR17	99W XL	7.5-(8.0)-9.0	775	50	C	B	B 71
	235/50ZR17	96W	6.5-(7.5)-8.5	710	51	C	B	B 71
18	215/55ZR17	98W XL	6.0-(7.0)-7.5	750	50	C	B	B 71
	245/40ZR18	97W XL	8.0-(8.5)-9.0	730	50	C	B	B 71
	215/45ZR18	93Y XL	6.5-(7.0)-7.5	600	50	C	B	B 71
	225/50ZR18	99W XL	6.5-(7.0)-7.5	775	50	C	B	B 71
	225/50ZR18	99Y XL	6.5-(7.0)-7.5	775	50	C	B	B 71
	235/50ZR18	101Y XL	6.5-(7.5)-8.5	825	50	C	B	B 71
19	235/35ZR19	91W XL	8.0-(8.5)-9.0	615	50	C	B	B 71
	235/35ZR19	91Y XL	8.0-(8.5)-9.0	615	50	C	B	B 71

UTQG rating 320 A A

CST

MARQUIS MR61

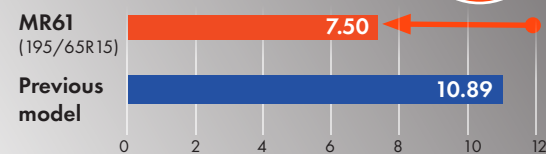
Spend less time at the fuel pumps



High-silica compound delivers low rolling resistance for high fuel efficiency

- Special rib design lowers the road impact for improved energy saving
 - Asymmetrical inner and outer shoulder design provides a better contact area for superb grip
 - Off-centre central ribs improve handling performance on differing road conditions
 - The inner shoulder's close pitch design provides great water dispersion
 - Three main grooves provide enhanced contact for prolonged mileage
- Special pattern design optimises the contact area to prevent uneven wear

ROLLING RESISTANCE



EXCELLENT FUEL EFFICIENCY



Rim	Size	Index	Approved Rim Width (in)	RR	WG	Noise dB
13	155/65R13	73T	4.5-(4.5)-5.5	C	B	B 70
	155/70R13	75T	4.0-(4.5)-5.5	C	B	B 70
	165/70R13	79T	4.0-(5.0)-5.5	C	B	B 70
	175/70R13	82T	4.5-(5.0)-6.0	C	B	B 70
	185/70R13	86H	4.5-(5.5)-6.0	C	B	B 70
	145/80R13	75T	3.5-(4.0)-5.4	-	-	-
	155/80R13	79T	4.0-(4.5)-5.0	C	B	B 70
14	165/55R14	72V	4.5-(5.0)-5.5	-	-	-
	165/60R14	75H	4.5-(5.0)-6.0	C	B	B 70
	175/60R14	79H	5.0-(5.5)-6.0	C	B	B 70
	185/60R14	82H	5.0-(5.5)-6.5	C	B	B 70
	205/60R14	88H	5.5-(6.0)-6.5	C	B	B 70
	155/65R14	75T	4.5-(4.5)-5.5	C	B	B 70
	165/65R14	83H XL	4.5-(5.0)-6.0	C	B	B 70
	175/65R14	82H	5.0-(5.0)-6.0	C	B	B 70
	185/65R14	86H	5.0-(5.5)-6.5	C	B	B 70
	195/65R14	89H	5.5-(6.0)-7.0	C	B	B 70
	165/70R14	81T	4.0-(5.0)-5.5	C	B	B 70
	175/70R14	84H	4.5-(5.0)-6.0	C	B	B 70
	175/70R14	88H XL	4.5-(5.0)-6.0	C	B	B 70
	185/70R14	88T	4.5-(5.5)-6.0	C	B	B 70
15	185/70R14	88H	4.5-(5.5)-6.0	C	B	B 70
	195/70R14	91H	5.0-(6.0)-6.5	C	B	B 70
	205/70R14	98H XL	5.0-(6.0)-7.0	C	B	B 70
	165/55R15	75V	4.5-(5.0)-5.5	-	-	-
	175/55R15	77T	5.0-(5.5)-6.0	C	B	B 70
	185/55R15	82H	5.5-(6.0)-6.5	C	B	B 70
	185/55R15	86V XL	5.5-(6.0)-6.5	C	B	B 70
	195/55R15	85V	5.5-(6.0)-7.0	C	B	B 70
	165/60R15	77H	4.5-(5.0)-6.0	-	-	-
	175/60R15	81H	5.0-(5.0)-6.0	C	B	B 70
	185/60R15	84H	5.0-(5.5)-6.5	C	B	B 70
	185/60R15	88H XL	5.0-(5.5)-6.5	C	B	B 70
	195/60R15	88V	5.5-(6.0)-7.0	C	B	B 70
	205/60R15	91V	5.5-(6.0)-7.5	C	B	B 70
	225/60R15	96H	6.0-(6.5)-8.0	C	B	B 70
	175/65R15	84H	5.0-(5.5)-6.0	C	B	B 70
	185/65R15	88H	5.0-(5.5)-6.5	C	B	B 70
	185/65R15	92H XL	5.0-(5.5)-6.5	C	B	B 70
	195/65R15	91V	5.5-(6.0)-7.0	C	B	B 70
	205/65R15	94V	5.5-(6.0)-7.5	C	B	B 70
	215/65R15	100H XL	6.0-(6.5)-7.5	C	B	B 70

UTQG rating 400 A A

CST

MARQUIS MR-C5

First choice for long-lasting durability

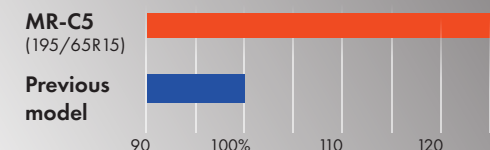
Optimised tire footprint engineered to avoid irregular wear for longer mileage and improved durability

- Closed shoulder design reduces air vibration to minimise tire noise
- Special grooved angle in the tire shoulder reduces road impact for Lower noise emission
- Central rib pattern design enhances high-speed stability and delivers a comfortable ride
- Highly rigid structure and a new profile design provides excellent stability under high-speed conditions



MILEAGE SIMULATION TEST (by Maxxis Proving Ground)

20% BETTER MILEAGE PERFORMANCE



EXTRA MILEAGE

Rim	Size	Index	Approved Rim Width (in)	Max Load (kg)	Max Pressure (PSI)
13	175/70R13	82T	4.5-(5.0)-6.0	475	44
	165/60R14	75H	4.5-(5.0)-6.0	387	44
	185/60R14	82H	5.0-(5.5)-6.5	475	44
14	175/65R14	82H	5.0-(5.5)-6.0	475	44
	185/65R14	86H	5.0-(5.5)-6.5	530	44
	175/70R14	84H	4.5-(5.0)-6.0	500	44
	185/70R14	88H	4.5-(5.5)-6.0	560	44
	185/55R15	82H	5.0-(6.0)-6.5	475	44
	195/55R15	85V	5.5-(6.0)-7.0	515	44
15	185/60R15	84H	5.0-(5.5)-6.5	500	44
	195/60R15	88H	5.5-(6.0)-7.0	560	44
	185/65R15	88H	5.0-(5.5)-6.5	560	44
	195/65R15	91H	5.5-(6.0)-7.0	615	44
	205/65R15	94V	5.5-(6.0)-7.5	670	44
	205/55R16	91V	5.5-(6.5)-7.5	615	44
16	195/60R16	89H	5.5-(6.0)-7.0	580	44
	205/60R16	92V	5.5-(6.0)-7.5	630	44

UTQG rating 500 A A

COMMERCIAL



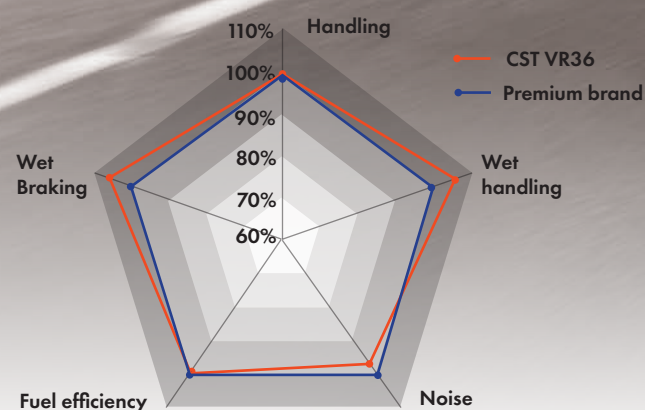
VAN MASTER VR36

Safety and reliability whatever the load

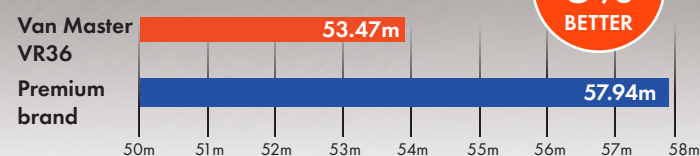


- New tread compound for longer lasting tires
Advanced pattern designs prevent uneven wear and offer greater cutting resistance for improved durability
- Closed lateral shoulder grooves improve shoulder wear properties
- Highly rigid straight ribs offer good braking traction and an ideal contact area for straight-line stability
- The three main central lateral grooves help to disperse water efficiently for better handling on wet surfaces

VR36 PERFORMANCE CHARACTERISTICS



WET BRAKING PERFORMANCE



Rim	Size	Load/Speed Rating	Approved Rim Width (in)	Tread Depth (mm)	Max Load (kg)	Max Pressure (PSI)	RR	WG	Noise dB
14	185R14C	102/100R	5.0-(5.5)-6.0	9.1	S850/D800	65	C	A	B 72
	195R14C	106/104R	5.0-(5.5)-6.0	8.9	S950/D900	65	C	A	B 72
16	195/65R16C	104/102T	5.5-(6.0)-6.0	9.1	S900/D850	69	C	A	B 72
	205/65R16C	107/105T	5.5-(6.0)-6.5	9.1	S975/D925	69	C	A	B 72
	215/65R16C	109/107T	6.0-(6.5)-7.0	9.1	S1030/D975	69	C	A	B 72
	225/65R16C	112/110T	6.0-(6.5)-7.0	9.2	S1120/D1060	69	C	A	B 72
	235/65R16C	115/113R	6.5-(7.0)-7.5	9.1	S1215/D1150	69	C	A	B 72

TRAILERMAXX ECO CL31N

NEW

Reliably strong for worry-free travels



- Three main grooves with mixed pattern design provides excellent traction and stability in various road conditions
- High-rigidity steel belt and bead filler provide enhanced structural strength for impressive loading capacity
- Advanced pattern designs prevent uneven wear and offer greater cutting resistance for improved durability
- New tread compound for longer lasting tires

Rim	Size	Load/Speed Rating	Approved Rim Width (in)	Tread Depth (mm)	Max Load (kg)	Max Pressure (PSI)	RR	WG	Noise dB
12	185/60 R12C	104/101N	(5.5)-6.0	7.2	S900/D825	94	C	B	B 72
	195/60 R12C	104/101N	5.5-(6.0)-6.5	7.4	S900/D850	94	C	B	B 72
	155/70 R12C	104/102N	4.0-(4.5)-5.0	7.3	S900/D850	94	C	B	B 72
13	195/50 R13C	104/101N	5.5-(6.0)-6.5	6.2	S900/D825	94	C	B	B 72
	155/70 R13	79N	4.0-(4.5)-5.0	6.2	437	48	D	B	B 72
	165/70 R13	84N	4.0-(5.0)-5.5	6.2	500	48	D	B	B 72
	155 R13	84N	4.0-(4.5)-5.0	6.6	500	50	C	B	B 72
	155 R13C 6PR	85/83N	4.0-(4.5)-5.0	6.5	S515/D487	51	C	B	B 72
	155 R13C 8PR	91/89N	4.0-(4.5)-5.0	6.5	S615/D580	65	C	B	B 72
	165 R13C 8PR	94/92N	4.0-(4.5)-5.0	6.7	S670/D630	65	C	B	B 72
14	185/65 R14 6PR	93/91N	5.0-(5.5)-6.0	6.8	S650/D615	55	C	B	B 72
	195/70 R14	96N	5.0-(5.5)-6.0	6.8	710	50	C	B	B 72
15	185 R14C 8PR	104/102N	4.5-(5.5)-6.0	7.2	S900/D850	65	C	B	B 72
	195/65 R15	95N	5.5-(6.0)-6.5	6.8	690	48	D	B	B 72
	225/70 R15C 8PR	112/110R	6.0-(6.5)-7.0	7.2	S2470/D2335	65	C	B	B 72

CL02

With its advanced pattern design featuring three main zigzagging grooves and high-rigidity steel belt construction, the CL02 is engineered to make light work of heavy loads and deliver the traction, stability and durability you need. A new tread compound combines with the tread design to provide long life and greater cutting resistance.

CL31

Using an enhanced sidewall structure for a higher load capacity, the CL31 is a true transporter tyre. With a combination of an advanced casing structure and an excellent wear-resistant compound, the CL31 is made to be the ultimate option for any van or light truck.

CS105

The CS105 is everything you would look for in a van or light truck tyre. Developed to be long lasting and heavy-load bearing, you'll be able to carry whatever you want wherever you need to go.

CL02

Rim	Size	Load/Speed Rating	Approved Rim Width (in)	Tread Depth (mm)	Max Load (kg)	Max Pressure (PSI)	RR	WG	Noise dB
12	140/70R12C 6PR	86J	4.0	6.2	530	62	C	C	B 72
	125R12	62S	3.5	5.2	265	44	-	-	-
	125R12C 8PR	81J	3.5	5.2	265	44	C	C	B 72
	145R12C 6PR	80/78N	4.0	7.0	450/425	50	C	C	B 72
	145R12C 8PR	86/84N	4.0	7.0	530/500	65	C	C	B 72
	155R12C 8PR	88/86R	4.0-(4.5)-5.0	7.7	560/530	65	C	C	B 72

CL31

Rim	Size	Load/Speed Rating	Approved Rim Width (in)	Tread Depth (mm)	Max Load (kg)	Max Pressure (PSI)	RR	WG	Noise dB
12	LT 5.00R12 8PR	83/81P	3.0-(3.5)-4.0	8.9	S485/D465	65	D	B	B 72
	LT 5.00R12 10PR	88/86P	3.0-(3.5)-4.0	8.9	S560/D530	75	-	-	-
13	LT 5.50R13 12PR	97/95P	(4.0)-4.5	9.0	S730/D690	97	D	B	B 72
	155R13C 8PR	91/89R	4.5-(4.5)-5.0	8.1	S615/D580	65	D	B	B 72
	165R13C 8PR	94/93N	4.5-(4.5)-5.0	8.5	S670/D650	65	D	B	B 72
	165/70R13C 6PR	88/86S	4.0-(5.0)-5.5	8.5	S560/D530	54	D	B	B 72
	175R13C 8PR	97/95N	4.5-(5.0)-5.5	8.6	S730/D690	65	D	B	B 72
	175/70R14C 6PR	95/93S	4.5-(5.0)-5.5	9.2	S690/D650	54	D	B	B 72
14	175/70R14C 8PR	99/98N	4.5-(5.0)-6.0	9.2	S775/D750	65	D	B	B 72
	175/75R14C 8PR	99/98S	4.5-(5.0)-5.5	9.2	S775/D750	69	D	B	B 72
	215/75 R14C 8PR	112/110Q	5.5-(6.0)-7	9.5	S1120/D1060	69	D	B	B 72
	6.50R14C 8PR	102/100N	(4.5)-5.0	10.8	S850/D800	65	D	B	B 72
	165R14C 8PR	97/95R	4.5-(5.0)-5.0	8.3	S730/D690	65	D	B	B 72
	175R14C 8PR	99/98N	4.5-(5.0)-5.5	9.0	S775/D750	65	D	B	B 72
	185R14C 8PR	102/100R	4.5-(5.5)-6.0	9.0	S850/D800	65	D	B	B 72
	195R14C 8PR	106/104R	5.0-(5.5)-6.0	9.4	S950/D900	65	D	B	B 72
	205R14C 8PR	109/107Q	5.0-(6.0)-6.5	9.8	S1030/D975	65	D	B	B 72
	195/70R15C 8PR	104/102S	5.0-(6.0)-6.0	10.7	S900/D850	65	D	B	B 72
15	205/70R15C 8PR	106/104R	5.5-(6.0)-6.5	11.0	S950/D900	65	D	B	B 72
	215/70R15C 8PR	109/107Q	5.5-(6.5)-7.0	10.7	S1030/D975	65	D	B	B 72
	225/70R15C 8PR	112/110Q	6.0-(6.5)-7.0	11.2	S1120/D1060	69	D	B	B 72
	225/70R15C 8PR*	112/110Q	6.0-(6.5)-7.0	11.2	S1120/D1060	69	D	B	B 72
	185R15C 8PR	103/102Q	5.0-(5.5)-6.0	9.4	S875/D850	65	D	B	B 72
	195R15C 8PR	106/104R	5.0-(5.5)-6.0	9.5	S950/D900	65	D	B	B 72
	195R15C 8PR*	106/104R	5.0-(5.5)-6.0	9.5	S950/D900	65	D	B	B 72
	215/65R16C 8PR	109/107Q	6.0-(6.5)-7.0	11.1	S1030/D975	69	-	-	-
16	195/75R16C 8PR	107/105R	5.0-(5.5)-6.5	9.5	S975/D925	69	D	B	B 72
	195/75R16C 10PR	110/108R	5.0-(5.5)-6.0	9.5	S1060/D1000	75	D	B	B 72
	205R16C 8PR	110/108Q	5.5-(6.5)-7.0	9.7	S1060/D1000	65	D	B	B 72
	215/75R16C 8PR	113/111R	5.5-(6.0)-7.0	9.4	S1150/D1090	69	D	B	B 72
	215/75R16C 10PR	116/114R	5.5-(6.0)-7.0	9.4	S1250/D1180	69	D	B	B 72
	LT235/85R16 10PR	120/116Q	6.0-(6.5)-7.5	11.5	S1380/D1260	81	D	B	B 72

*Raised white wall

CS105

Rim	Size	Load/Speed Rating	Approved Rim Width (in)	Tread Depth (mm)	Max Load (kg)	Max Pressure (PSI)
15	6.50R15 10PR TT/TL	106/101N	(5.5)-6.0	10.7	S950/D825	81
	7.00R15 12PR TT/TL	113/109N	(5.5)-6.0	10.9	S1150/D1030	97
16	6.50R16 10PR TT/TL	107/102N	5.0-(5.5)	10.7	S975/D850	81
	6.50R16 12PR TT/TL	110/105N	5.0-(5.5)	10.7	S1060/D925	97
	7.00R16 12PR TT/TL	115/110N	(5.5)-6.0	11.1	S1215/D1060	97
	7.50R16 12PR TT/TL	121/120N	5.5-(6.0)-6.5	10.4	S1450/D1400	97

TIRE SAFETY

Important tire information

When customers choose CST, they’re getting a product designed to deliver safety along with performance. But even the best tires must be used with caution and with close attention to safe practices. Following the guidelines and recommendations below will help to reduce the chance of accident or injury.

Always refer to the vehicle’s tire information placard.

- It is preferable to replace a vehicle’s tires with ones that correspond to the vehicle’s manufacturer-recommended specifications.
- Tire speed ratings and load–carrying capacity should always be equal to or greater than the original equipment tires.

Service Description

Most tires have a service description that appears at the end of the tire size. This service description has a two-digit number which represents the load index, and a letter which represents the speed rating.

Example: 86H. The load index represents the maximum load each tire is designed to carry at the tire’s maximum inflation pressure.

Speed Rating

Speed ratings are certified sustained speed designations assigned to passenger car radials and high performance tires. In the U.S., these ratings are based on tire testing in laboratory conditions under simulated loads. For a tire to be speed-rated, it must meet certain minimum government standards for reaching and maintaining that specified speed. Any speed symbol denoting a fixed maximum speed capability will be at the end of the service description following the load index. Tire installers should refer to the vehicle’s owner’s manual to identify any tire speed rating restriction or recommendation that could affect the operation of the vehicle. If the replacement tires have a lower speed rating than what is specified as original equipment, the consumer should be aware that the vehicle’s speed must be restricted to that of the replacement tires. CST does not recommend mixing tires of different speed ratings on a vehicle.

Note: Speed ratings apply only to the tire, not to the vehicle. Putting speed-rated tires on any vehicle does not mean that the vehicle can be operated at the tire’s rated speed. Refer to the vehicle’s operating manual for specific information.

Ply Rating vs. Load Range

- Ply ratings and load ranges denote the load capability and inflation limits of a given tire size when used in a specified type of service.
- **Ply Rating:** An older method of rating load capacity. These are shown as 4-ply rated, 6-ply rated, 8-ply rated, etc.
- **Load Range:** This is the current method of rating the tire’s load-carrying capacity and is denoted by letters: B, C, D, E, etc.

Uniform Tire Quality Grade (UTQG)

The UTQG, which is required by the government, provides comparative manufacturer information. Tires are subjected to a series of governmentmandated tests that measure performance of treadwear, traction and temperature resistance. All testing is done by the individual manufacturer.

- Treadwear: A measurement of tread durability. Tested against an industry standard, the assigned numerical grade indicates how well the tread lasts compared to a reference of 100. Actual wear depends on the conditions under which the tire is used. Driving habits, vehicle maintenance, road surface differences and climate variations all affect treadwear.
- Traction: A measurement of the tire’s ability to stop on wet test surfaces of asphalt and concrete under controlled conditions. Traction grades are assigned by the UTQG system and branded on the sidewall of the tire. The traction grade is determined only for straight-ahead wet braking. It does not include cornering, which might be important for customer performance needs.
- Temperature (resistance): a measure of resistance to heat generation under normal operating conditions. The test is conducted under predetermined standards for inflation and loading. Excessive speed, under-inflation and overloading can all cause adverse heat build-up. Sustained high temperatures can reduce tire durability. Temperature grades are branded on the sidewall of the tire.

DOT (Department of Transportation) Certification

A DOT brand on the tire’s sidewall indicates that the tire has been certified by the Department of Transportation. Following the DOT brand is a serial number that denotes the tire’s manufacturer, the manufacturing plant, tire size code and date of manufacture. While consumer tire registration is voluntary, federal law requires that the selling dealer record the DOT identification numbers and provide the DOT registration form to the consumer.

Mounting Procedures

Be sure to observe the following when mounting CST tires:

- Lubricate both top and bottom beads with an approved lubricant. Never exceed 40 PSI to seat the beads.
- Both tire beads should be securely seated on the rim.
- Always replace a tire with another tire of the same bead diameter designation and suffix letters.

A new valve stem should be installed in the rim each time a worn tire (passenger or light truck) is replaced.

- Never put any flammable substance in the tire/rim assembly at any time. Never use any flammable substance in a tire/rim assembly and attempt to ignite in order to seat the beads.
- Be sure that the wheel is securely seated on the hub face.
- Do not stand, lean or reach over the assembly during inflation.
- Be sure that all lug nuts have been properly torqued to the manufacturer’s specifications.
- Be sure that there is no build-up of dirt or debris between the hub and the wheel.

- Be sure that the wheel is not bent or damaged.
The wheel should not be used if:
 - The flange is bent.
 - The welds or rivets are leaking.
 - The stud holes are elongated (rather than round).
 - The wheel has more than 1/16” radial or lateral run-out.

- Matching tires on four-wheel drive and all-wheel drive vehicles: special attention should be paid to ensure that all four tires are closely matched in height and width to avoid strain and possible damage to the vehicle. Tire inflation pressure also affects the tire’s rolling circumference and should be matched according to the vehicle manufacturer’s recommendations. Always check the vehicle manufacturer’s recommendations prior to installing new tires.

Warning: Improper mounting, under-inflation, overloading or tire damage may result in tire failure, which may lead to serious injury or death. Tire and rim sizes must correspond for proper fit and application.

Warning: Tire changing can be dangerous and should be done only by trained persons using proper tools and procedures as established by the Rubber Manufacturers Association. Failure to comply with prope procedures may result in incorrect positioning of the tire or wheel assembly which could cause the assembly to explode with enough force to cause serious physical injury or death. Never mount or use damaged tires.

If replacing fewer than four tires:

It is always preferred and CST recommends that **ALL FOUR** tires be replaced at the same time to optimize vehicle performance. In those cases where it is not feasible to install four new tires at the same time, some general guidelines are below. However, if the vehicle manufacturer has alternate recommendations, always follow those guidelines.

Replacing two tires:

When only two new tires are purchased, they should be installed on the rear axle, as long as the new tires have a speed rating equal to or greater than the speed rating as compared to the front tires. Generally, new tires will provide better grip and evacuate water more effectively, which is important when a driver encounters hydroplaning situations. When placed on the rear axle, new tires or tires with deeper tread depth than the front tires provide greater traction on wet surfaces. This can also help prevent a possible oversteer condition and loss of vehicle stability.

Replacing one tire:

While not recommended, if a single tire replacement is unavoidable, it is best to pair the new tire with the tire that has the deepest tread, and that both be placed on the rear axle. When placed on the rear axle, new tires or tires with deeper tread depth than the front tires provide greater traction on wet surfaces. This can also help preven a possible oversteer condition and loss of vehicle stability.

Tire Speed Rating Chart

The rating system shown below displays the top speed for which a tire is certified. It does not indicate the total performance capacity of a tire This information will not be found on all tires. The speed rating denotes the speed for which a tire was designed to be driven for extended periods.

For tires having a maximum speed capability above 149 mph (240 km/h), a “ZR” may appear in the size designation. For tires having a maximum speed capability above 186 mph (300 km/h), a “ZR”

must appear in the size designation, including a “Y” speed symbol in brackets.

Example: P275/40R17 93W at 168 mph (270km/h) or P275/40ZR17 at above 149 mph (240 km/h).

Rating Symbol	Speed (km/h)	Speed (mph)	Rating Symbol	Speed (km/h)	Speed (mph)
B	50	31	P	150	93
C	60	37	Q	160	99
D	65	40	R	170	106
E	70	43	S	180	112
F	80	50	T	190	118
G	90	56	U	200	124
J	100	62	H	210	130
K	110	68	V	240	149
L	120	75	W	270	168
M	130	81	Y	300	186
N	140	87	ZR	Over 240	Over 150

ALL THE TIRES IN THIS CATALOG ARE TUBELESS.

TIRE SAFETY

Riding on worn tires can cause loss of traction, leading to an accident and possible serious injury. Replace your tires when there is only 2/32” of tread depth remaining. All DOT-approved tires have a tread-wear indicator bar woven into the tread pattern. While this small piece of rubber appears to be a bridge between the two tire grooves, it is only 2/32” high. When the top of this indicator bar is even with the plane of the tread pattern, replace your tires.
Another way to judge this indicator: Stick a penny, head down, in the tread. Seeing the top of Lincoln’s head means that you’re down to 2/32” and your tires must be replaced.

For optimum safety, especially in wet conditions, replace your tires when you have 4/32” of tread remaining.

Always choose the original size or the size recommended by your manufacturer when replacing your tires. Replacing tires of different speed ratings, sizes or construction could lead to improper tire performance, tire failure and accident, causing possible serious injury or death.

Changing the size of your tire’s height, width, load capacity and/or tread design can change your tire’s performance.

If you must use tires of differing profiles, mount the widest tires on the rear of the vehicle.

Don’t mix radial and non-radial tires. If you mix radial and non-radial tires, you may have trouble with consistent handling. Handling problems can lead to loss of vehicle control, accidents, injuries and death.

If you must measure the width of your tires, be sure that the tires are mounted on a rim recommended by the Tire and Rim Association (T&RA) at the specified tire pressure.

TIRE SAFETY

Depending on a tire's construction, if a tire is mounted on too narrow or too wide a rim, the tire's profile will be changed. The resulting change can unbalance and stress the tire's body and lead to poor performance, tire failure, accidents, injury and/or death.

Never use P-metric automotive tires as replacements for light truck tires or on a vehicle equipped with dual-rear tires. Each tire is manufactured with a specific speed rating and load requirements to ensure proper vehicle use.

Damaged or incorrectly mounted tires can suddenly fail, causing serious injury or death. Tires should only be repaired by professionals.

NEVER OVERLOAD YOUR TIRES: Overloading can cause a range of problems – everything from poor handling and poor mileage to failure of vehicle components or tire failure. Tire failure can cause accidents, leading to serious injuries and death. Check your owner's manual to be sure that you're within safety limits for the load your tires can handle. If you're having tires mounted, be sure to check the load limit of the tires to be mounted. The load index of the replacement tires should always meet or exceed the maximum load of the original tires.

Proper tire inflation is essential! Your vehicle cannot handle its load without the right amount of air pressure – and the results could be disastrous, including accidents, serious injuries and death. Most tire failures are caused by under-inflation. Proper inflation is also essential for your vehicle's performance. Unless your tires are properly inflated, you won't get the best gas mileage from your vehicle. In fact, you could lose as much as 5% of your car's optimum mileage by failing to properly inflate your tires.

Check your tire pressure at least once a month, and always check before long trips. Use a tire gauge, and be sure that your tires are still cold when you check them. If your vehicle still has its original tires, use the optimum pressure specified by the vehicle manufacturer as a guide. If you've replaced your tires, check with your dealer regarding optimum tire pressure.

REMEMBER: Your tires can be under-inflated long before you can see or feel any change. Don't trust your eyes, and don't trust your vehicle's feel; trust a tire gauge.

NEVER SPIN YOUR TIRES: Being stuck in mud or snow can be frustrating – but if you spin your tires, being stuck can be dangerous. Your tire might be spinning much faster than your speedometer indicates, causing injury or death as well as damage to your vehicle. A tire spinning off the ground presents an equal or greater hazard.

NEVER STAND BEHIND OR CLOSE TO A SPINNING TIRE.

Excess speed is a danger to your tires, your vehicle and your safety. Driving above the speed limit can stress your tires, leading to sudden tire failure.

Remember that a mini-spare tire is a temporary fix, and is **NOT** designed to be ridden for long periods of time! NEVER drive over 50 miles per hour when using a mini-spare tire. Have a new tire installed as soon as possible. Check the inflation in your spare tire as well. Spare tires lose air pressure over time. You don't want to discover that

your spare tire is under-inflated when you need it most.

You should also periodically replace your spare to prevent damage from aging.

Tire maintenance and information

Avoid irregular tire wear, which can contribute to poor tire performance and tire failure! Failing to rotate your tires at least every 6000-8000 miles also means that you'll have to replace them much more quickly. Always refer to your owner's manual for the rotation schedule and pattern specific to your vehicle.

Unbalanced tires, which can be caused by hitting curbs, potholes or other road hazards, affect your ride quality and tire life. You can usually detect an unbalanced tire through vibrations in the steering wheel at certain speeds. If you suspect that your tires may be unbalanced, have them inspected by a professional as soon as possible to avoid excessive wear and damage to your vehicle's front end parts.

Improper alignment will affect your car's tire wear, gas mileage, stability and overall performance. Even if you haven't noticed a problem, you should still have your car or truck aligned at least once a year as part of a regular maintenance program. If you think your vehicle might be out of alignment, your vehicle must be inspected by a professional as soon as possible. Have your tires inspected immediately if you notice any warning signs of improper alignment, which include the following:

- Excessive or uneven wear
- Steering wheel pulling to the left or right
- Feeling of looseness or wandering
- Steering wheel vibration or shimmy
- Steering wheel isn't centered when car is moving straight ahead

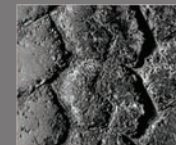
If you will not be using your tires for a long period, don't leave them on your vehicle. Store unused tires in a cool, dry place away from sunlight and other elements which can accelerate tire aging over time.

If you're using winter or snow tires, have them mounted on all four wheels. Using winter or snow tires only on the front of your vehicle is extremely dangerous and could lead to handling problems, loss of vehicle control, accident, injury and death. Keep tires looking their best by cleaning with a mild soap or detergent and a semi-soft bristle brush. Rinse with clean, plain water.



Abnormal Tread Wear

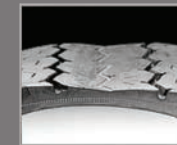
Tread wear issues appear as flat spots, or areas of rapid wear on the tire. They can also be seen as deformed tread blocks or cracking in the tread area. This type of wear is usually a result of brake problems, suspension or alignment problems, an unbalanced tire and wheel assembly, or misuse.



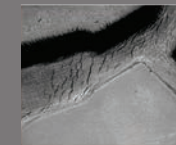
Mushroomed Tread



Rapid Shoulder Wear



Rapid Center Wear



Cracking Between Tread



Flatspot

Sidewall Damage

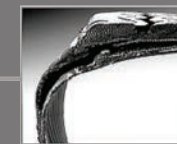
Sidewall damage appears as cuts, tears, bubbles, or scrapes anywhere along the sidewall of the tire. This type of damage usually occurs when a tire encounters a road hazard. This could include anything from a curb to a bolt or piece of metal. Sharp objects or very concentrated stresses usually cause cuts and tears. Bubbles and scrapes occur due to impact damage or prolonged abrasion.



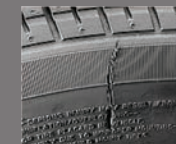
Letter Defect



Sidewall Bubble – A bulge that appears on the outside of a tire is usually a sign of separation



Sidewall Tear



Sidewall Cut

Tire Separations

Separations appear as bulges on the shoulder or tread face, or as localized wear above the separated region. A groove worn along the shoulder could be a sign of separation. Separations are mainly caused by abnormal heat build up. Excessive heat can build up during prolonged high speed driving, overloaded or under-inflated tire conditions. Separations can also be caused by penetration of water or foreign materials into the carcass of the tire. This material enters through cuts caused by road hazards.



Bead Separation



Tread Separation



Belt Separation



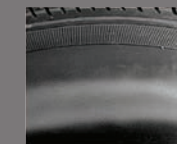
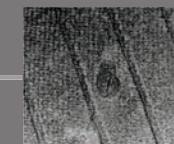
Shoulder Separation – A groove worn in the shoulder of the tire, is usually evidence of separation

Road Hazard

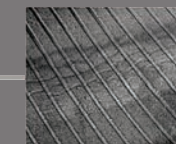
Road Hazard Damage appears as protruding objects or cuts in the tire. Misuse or neglect appears as wrinkles in the inner liner or scuffing that extends around the circumference of the tire. Road hazard damage occurs when a sharp object comes in contact with the tire. Misuse and neglect can occur to severely under-inflated tires or to tires with insufficient clearance between the tire and fenders. It can also occur when dual axle tires are overloaded, or there is not enough clearance between the two tires of the assembly.



Puncture – Normally, the only evident of a puncture will be a cut that extends from the tread of the tire through the inner liner.



Under-Inflated Tire – An abrasion may run around the circumference of the tire and wrinkles may be observed in the inner liner.



Bead Problems

Bead Problems appear as a broken bead, chafing of the rubber around the bead, or deformation of the bead area. A broken bead can occur when a tire is mounted on an improper rim or carelessly mounted or dismounted. Bead chafing can occur when mounting a tire on a dirty or mismatched rim, or when the tire is in an overloaded or under-inflated condition. A bent or deformed bead usually occurs when the tire is improperly stored, or excessive stress is applied to the bead area during mounting.



Broken Bead



Damaged Bead



Bent Bead



CST ADVENTURE

CST

CHENG SHIN RUBBER IND.CO., LTD.
CORPORATE HEADQUARTERS
215 Meei-Kong Road, Ta-Tsun,
Chang-Hwa, Taiwan. R.O.C
TEL: 886-4-8525151-60
FAX: 886-4-8526468

CHENG SHIN RUBBER (XIAMEN) IND., LTD.
No. 15 Xibin Road, Xinglin, Jimei District,
Xiamen city, China
TEL: 86-592-6211606
FAX: 86-592-6214649



FACEBOOK



WEBSITE



INSTAGRAM