

ISLAND STONE

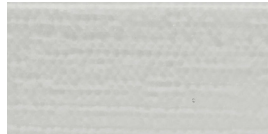


CASCADE COLLECTION

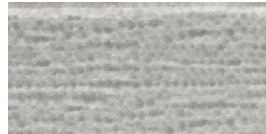
Available Colors



Pure Silk



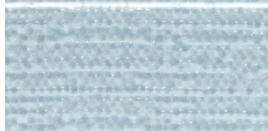
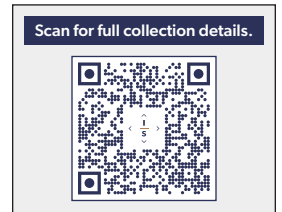
Fog



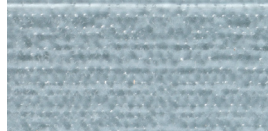
Tule



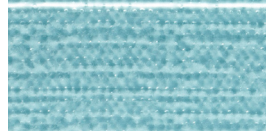
Graphite



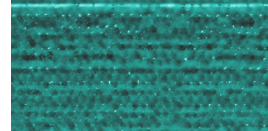
Oceania



Stratos



Azure



Lagoon



Midnight

Tile products may vary in color, shade, finish and size. Grout color selection may have an impact on the appearance of the tile.

Product Details

- Cascade is a fused glass tile with a durable coating on the back of the tile. The coating consists of two layers, the color layer, and a protective white top layer, which are both fused to the back of the tile at a temperature in excess of 1025°F.
- Cascade mosaics are back mounted with an alkali resistant mesh and non-water-soluble glue facilitating successful installation in intermittent wet and submerged applications.
- Install per the *TCNA Handbook for Ceramic, Glass, and Stone Tile Installation* and the Island Stone installation instructions available at IslandStone.com.
- Cascade meets or exceeds all "ANSI A137.2 American National Standard Specifications For Glass Tile" requirements for use in exterior freeze-thaw environments and submerged applications.
- Cascade can be readily cut on a wet saw with a continuous rim diamond blade designed for cutting glass tile. **Do not dry cut glass tile with a power tool.**
- Cascade does not need to be sealed.
- Cascade should be cleaned with a pH neutral tile cleaner or alkaline based cleaner.

Test Results

TEST	ASTM C373	ASTM 648	ASTM 650	ASTM C1026	ANSI 137.2 Section 7.9	ANSI A326.3
	Water Absorption	Breaking Strength	Chemical Resistance	Freeze-Thaw Resistance	Thermal Shock Resistance	Dynamic Coefficient of Friction
RESULTS	Impervious	≥400 lbf	Class A	Pass	Pass	< 0.42
			No sample piece affected	300 Cycles	No visible defects	

Cascade meets or exceeds the standard requirements found in "ANSI A137.2 American National Standard Specifications For Glass Tile."

For additional information, please call 1-800-371-0001 or visit us online at IslandStone.com



25Jun25

CASCADE COLLECTION

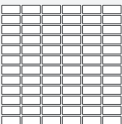


1"x2" Straight Set - Oceania

Sizes (Available in all colors)

FIELD TILE	Parent Code	Pattern	Finish	Actual (in)	Actual (mm)	Coverage Per Piece	Thickness	lbs/box	pcs/box	Pool, Spa & Water Feature
	gr5	2"x 8"	Cascade	2"x 7 7/8"	50 x 200 x 6mm	0.11 sf	1/4"	42	120	Yes
	gr6	6"x 12"	Cascade	5 7/8"x 11 3/4"	150 x 300 x 6mm	0.48 sf	1/4"	46	30	Yes*

*For submerged applications, 6" x 12" glass tile MUST be installed using TEC TotalFlex XMS.

MOSAIC TILE*	Parent Code	Pattern	Finish	Actual (in)	Actual (mm)	Coverage Per Piece	Thickness	lbs/box	pcs/box	Pool, Spa & Water Feature
	gs2	1"x 2" Straight Set	Cascade	11 3/4"x 11 3/4"	298 x 298 x 6mm	0.96 sf	1/4"	25	11	Yes

*Mesh mounted

Suggested Usage



Interior Wall



Kitchen Backsplash



Fireplace Wall
(Not in Firebox)



Shower Wall



Steam Shower Wall



Exterior Wall



Pool, Spa & Water Feature

All tile and natural stone products may vary slightly in color, shade, finish and size. Upon delivery, inspect the entire tile order prior to commencing tile work. Installation constitutes acceptance. No claims will be accepted after installation.

*For submerged applications, 6" x 12" glass tile MUST be installed using TEC TotalFlex XMS.
Confirm complete product specifications at IslandStone.com.

For additional information, please call 1-800-371-0001 or visit us online at IslandStone.com

25Jun25