

MITER CUTTING TUTORIAL FOR ISLAND STONE RUSTIC CLADDING

Overview

This tutorial is designed to help installers using Island Stone Rustic Cladding on installations requiring the cladding to wrap a corner.

Miter Joint

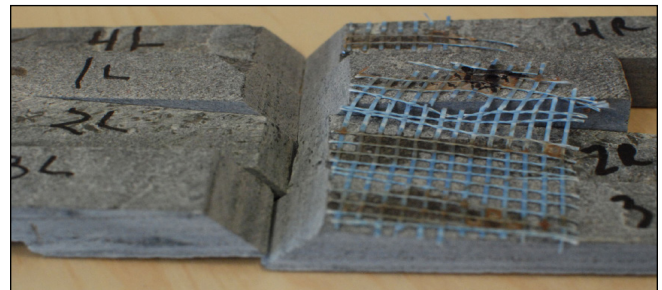
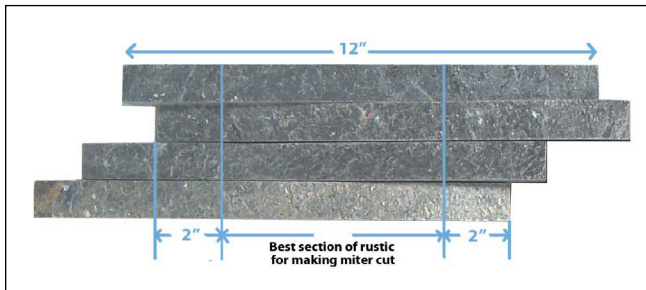
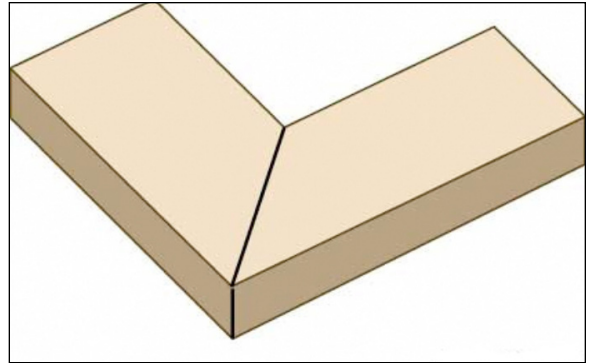
A joint made between two pieces that forms a corner, usually both sides are beveled at a 45° angle to form a 90° corner.

Miter cut: The angled cut used to create the beveled surface.

Note: Not all corners are a 90° angle. We suggest using in a miter saw protractor tool. This protractor eliminates the need for calculations & provides an accurate angle measurement. You simply place the tool on the corner, read the angle on the protractor and set your saw to that angle to achieve the proper angled cut.

Important

Rustic Cladding can be placed in various offset designs. For this tutorial we are using no offset, allowing us to cut the corners in the same spot for each piece. If placing Rustic Cladding in an offset pattern, the required miter position will vary for each piece.



Step 1. Determine location of miter cut. We recommend positioning the miter cut within the center section of a cladding piece to ensure an adequate piece remains on either side of the cut.

Step 2. A miter joint requires two cuts. Corners are generally 90°, which requires the two miter cuts to be at 45° ($90/2$). (Example shows miter cut for external 90° angle).



Step 3. When making cuts, cladding piece should always be placed with the bottom of the cladding against the tray guide. All pieces should also be flat on the saw's tray.



Step 4. With saw positioned at desired angle (45° shown), hold tile flat against tray surface and guide while making the first miter cut.

MITER CUTTING TUTORIAL FOR ISLAND STONE RUSTIC CLADDING



Step 5. Remove first miter cut piece and turn remaining piece 180° around and reposition so that saw will cut 2nd matching miter cut. Important! Piece should be positioned so that saw cuts as close as possible to the highest piece of the side being cut.



Step 6. Hold pieces flat against tray surface and guide while making the second cut.



You should now have matching miter pieces to create a desired miter joint with the rustic cladding.

Note: Expect different heights of corner pieces based on thickness of individual pieces.



Pay special attention to the positioning of each piece of cladding while installing so they do not move as this relates to the other pieces in the set and will affect the tightness of the interlock with the next piece of cladding.

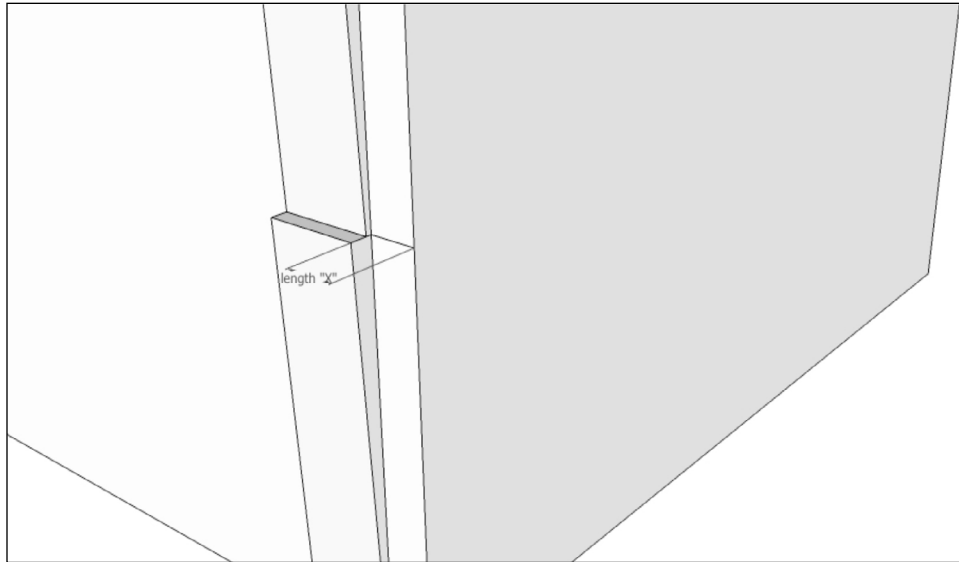
Note: For creating a miter joint on an internal angle follow same directions with 45° to create internal 90° corner.

MITER CUTTING TUTORIAL FOR ISLAND STONE V TILE CLADDINGS

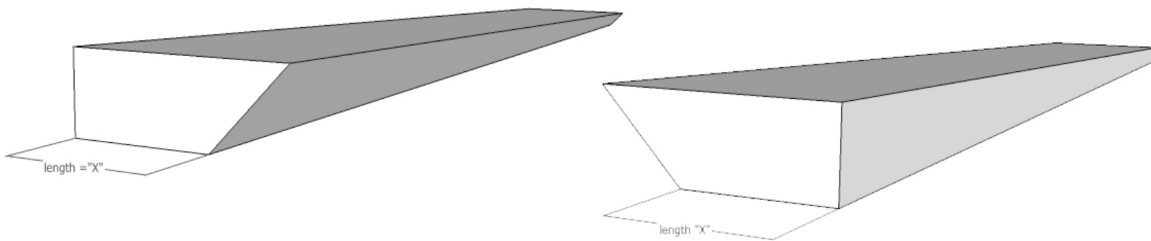
Using V Tile to Wrap an Outside Corner

When using V Tile to clad a surface with an outside corner, we recommend the following mitered V Tile approach.

Note: The visual reflects a design that uses a 50% offset stacked design. Alternative designs utilize the same principle but will have a slight variation on positioning and direction of mitered pieces.

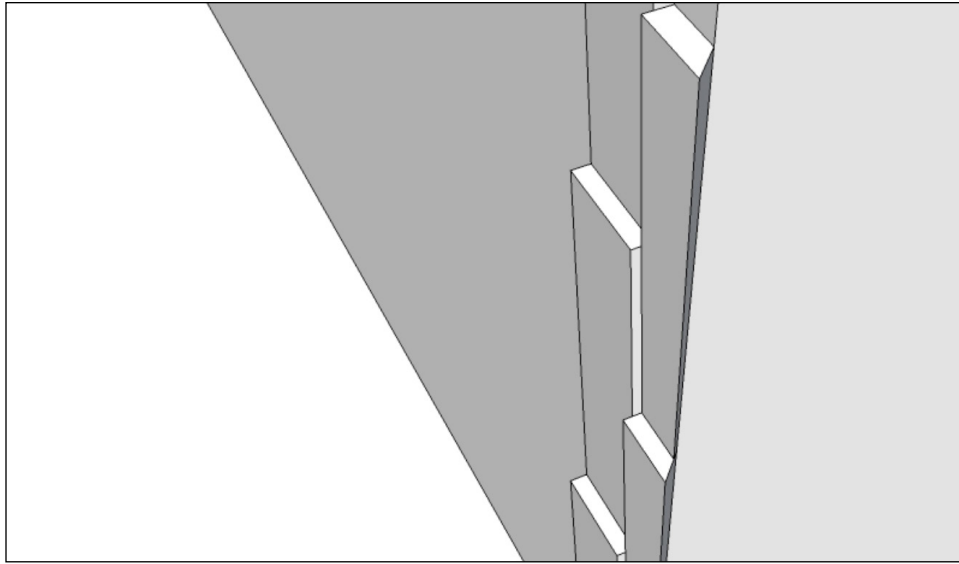


Step 1. Determine distance between final full piece and edge of wall.

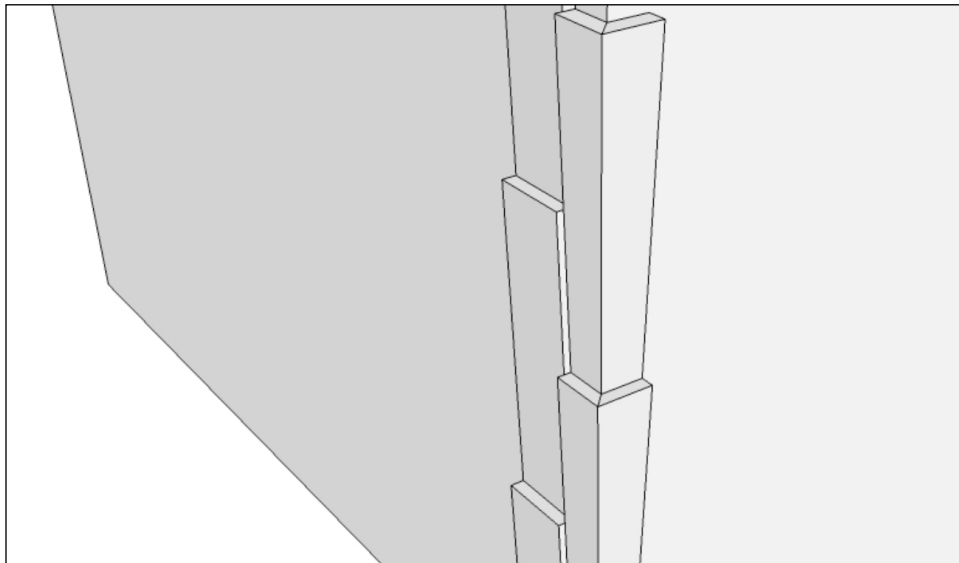


Step 2. With saw positioned at desired angle (45° shown), place an individual piece face up with thick end of the V Tile against tray guide. Hold the tile flat to the tray surface while making the first miter cut in location shown (length "X"). Repeat process with another tile however this time place the individual piece face up with thin end of the V Tile against tray guide to get the correlating mitered piece to complete the corner. Repeat as needed to create matching sets of as many mitered pieces as project requires.

MITER CUTTING TUTORIAL FOR ISLAND STONE V TILE CLADDINGS

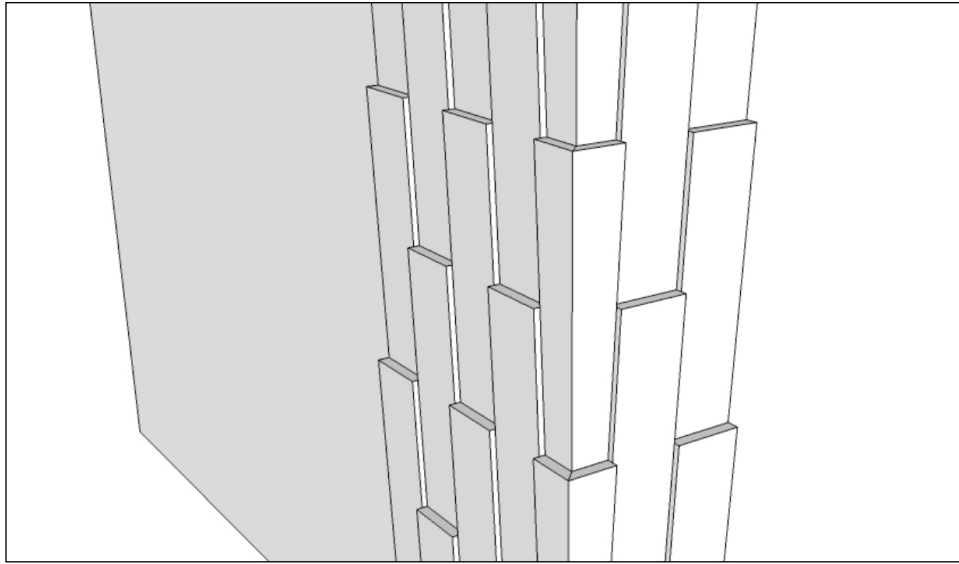


Step 3. Set appropriate mitered pieces along corner making sure to offset as overall design pattern designates. Repeat along corner as necessary.



Step 4. Position the coordinating 2nd mitered piece to match cut face of initial mitered piece as shown.

MITER CUTTING TUTORIAL FOR ISLAND STONE V TILE CLADDINGS



Step 5. Continue setting design on the 2nd wall.