



INDOOR • OUTDOOR



kravetcarpet

Introducing our signature worry free collection from Kravet Carpet in which family, pets, outdoor living, and luxury go hand in hand. Rugs are handmade of 100% high-performance P.E.T yarn giving them durability, fade-resistant color and softness.

Eco-friendly, this polyester (P.E.T.) fiber is created from recycled plastic bottles. It naturally has a wool-like texture and sheen. Great for stylish living areas, entryways, kitchens, bathrooms, as well as covered outdoor spaces.

The collection includes diverse qualities for all design needs. The hand woven patterns embody a low sheared distressed sensibility to ultra-soft shags with a global vibe. The hand tufted quality is sculpted with intricate blends of fine cut and loop texture that allow more formality to a living area.

Allow your imagination to go wild by creating your very own signature pattern using these qualities as long as you stay within the color palette.

Our experts will guide you through the process and our artists will provide you with visuals based on your inspiration.

Custom Color and Size Available
Choose from over 80 Standard Colors. Max Size: 14'Lx20'W.
Strike Off in 4-6 Weeks, Rug Production in 10-12 Weeks.





SCOZAL
Ice Cap

Hand Woven



SCOZAL
Ocean Surf

Hand Woven







MORRIES
Smoke

Hand Woven



MACAZE
Husk

Hand Woven





FALLENBEADS
Riverbed

Hand Woven



ALODIAM
Sand

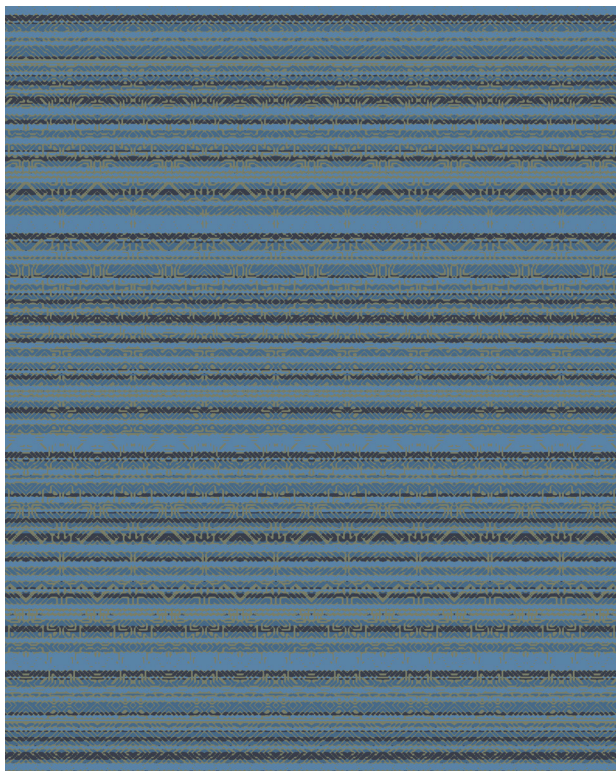
Hand Woven





ALODIAM
Stone

Hand Woven



ALLOWHI
Daybreak

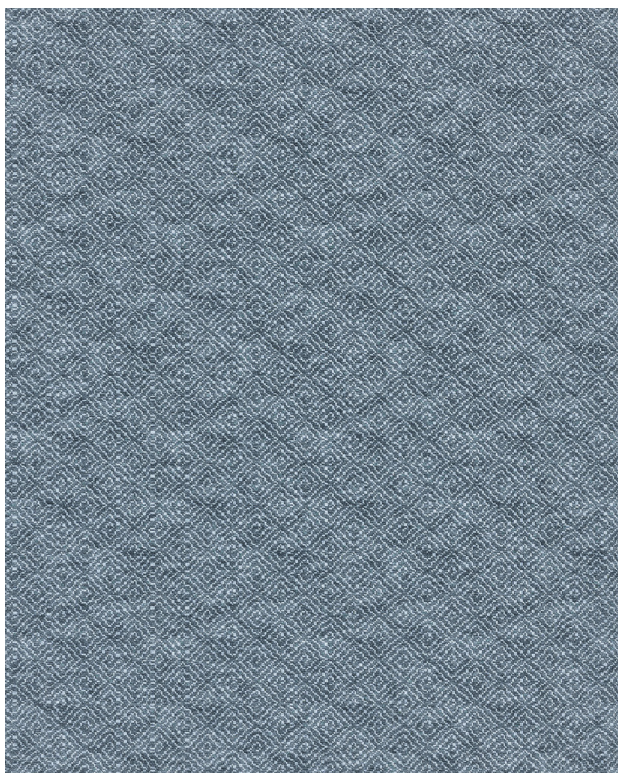
Hand Woven





KEYREEK
Fog

Hand Knotted

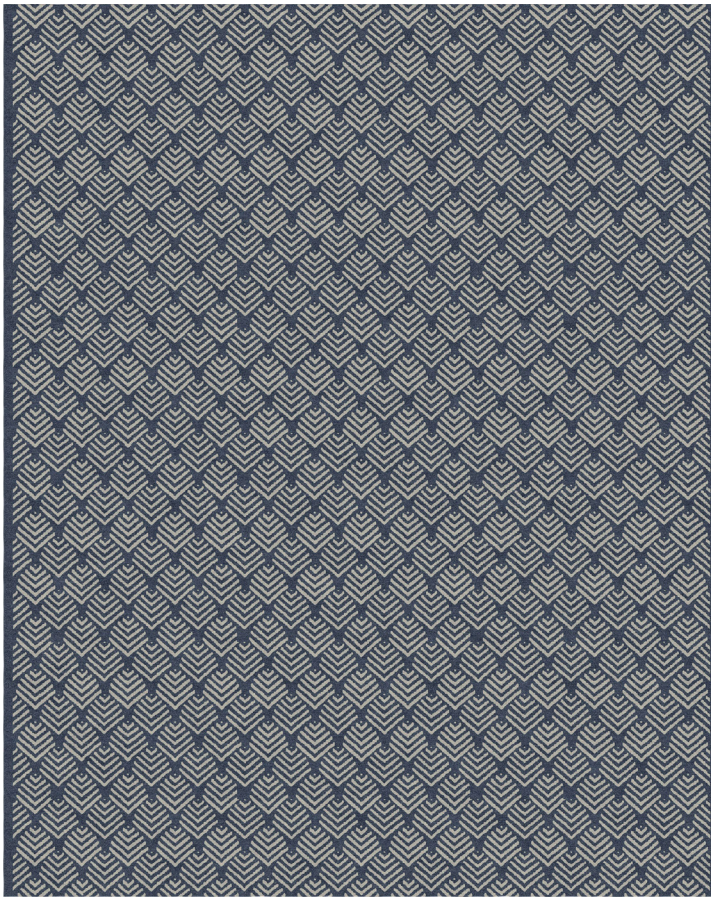


KEYREEK
Harbour

Hand Knotted







TREVEN
Coastline

Hand Knotted



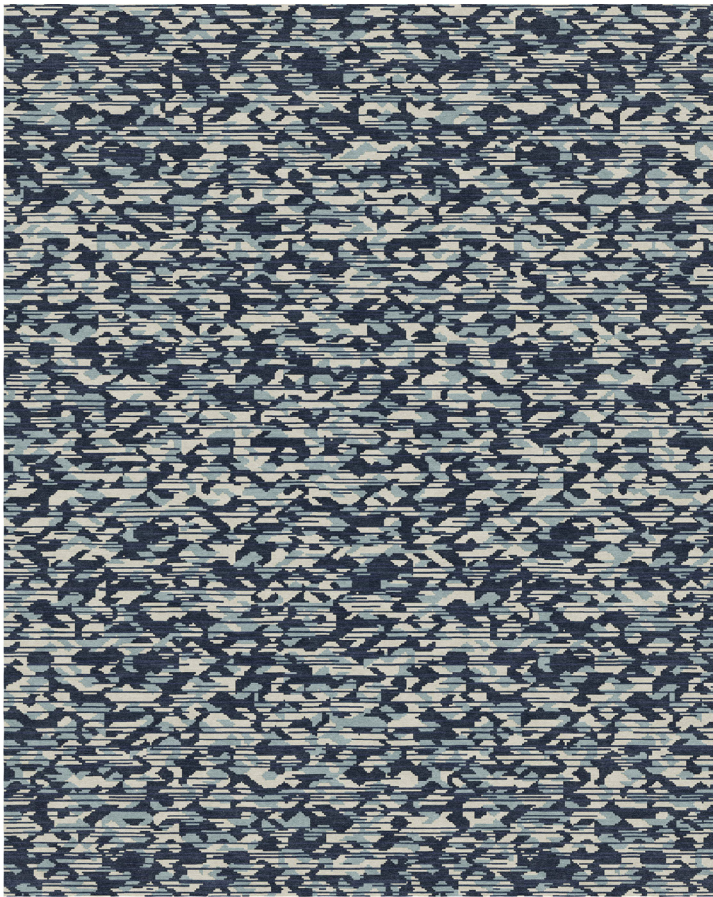
Additional Colorways



Mist

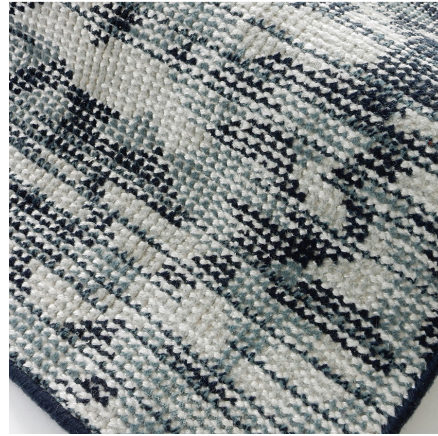


Horizon



FLOCKLAND
Coastline

Hand Knotted



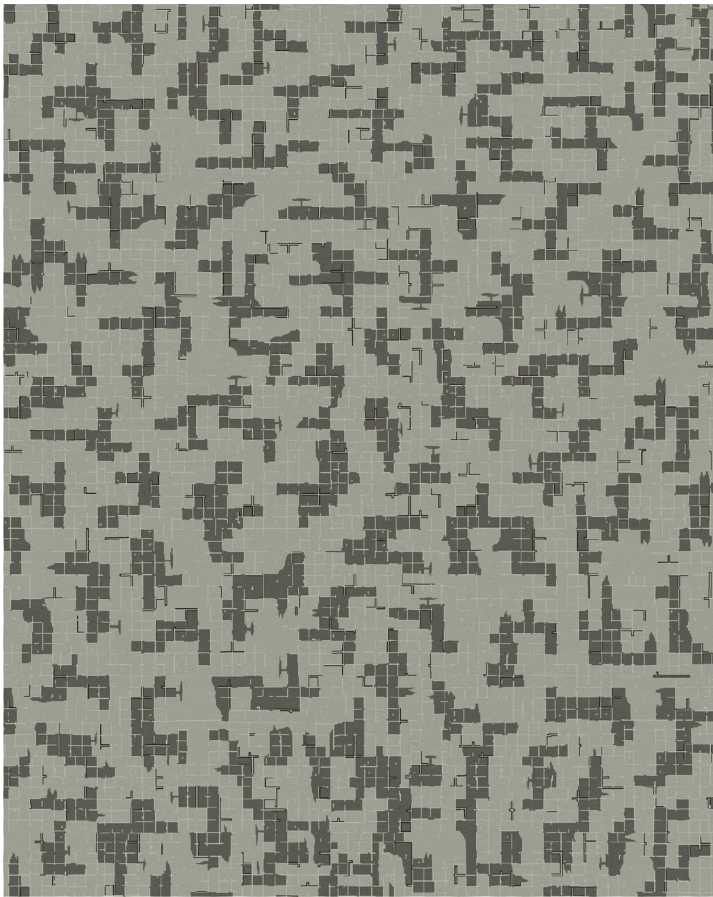
Additional Colorways



Meadow



Horizon



BLOCKOUT
Lagoon

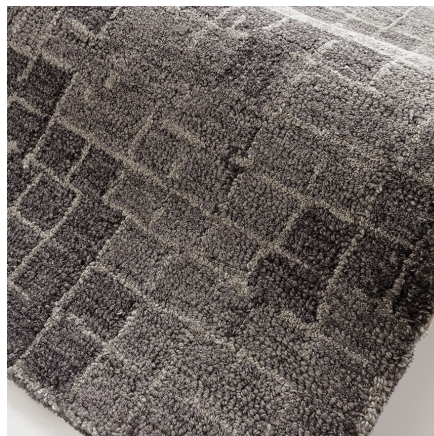
Hand Tufted



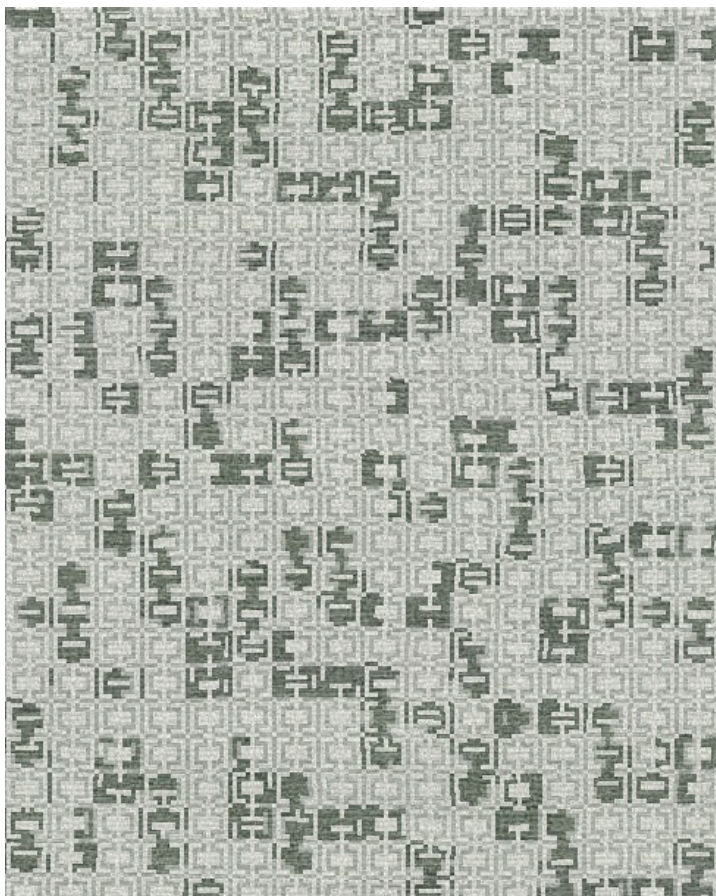
Additional Colorways



Marina



Woodland



KANGLE
Lagoon

Hand Tufted



Additional Colorways



Marina

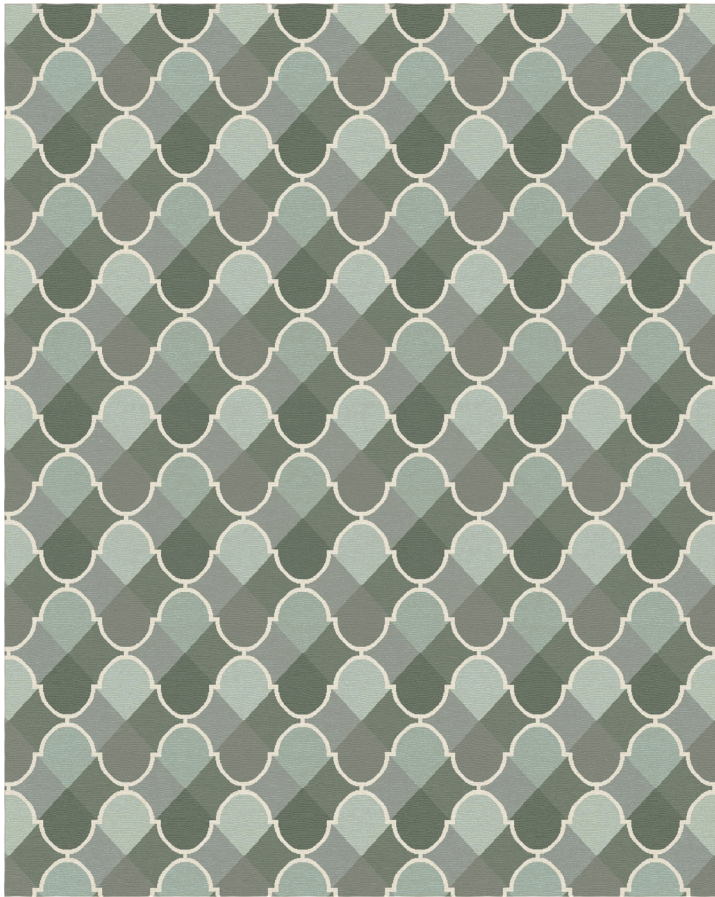


Woodland



Flame



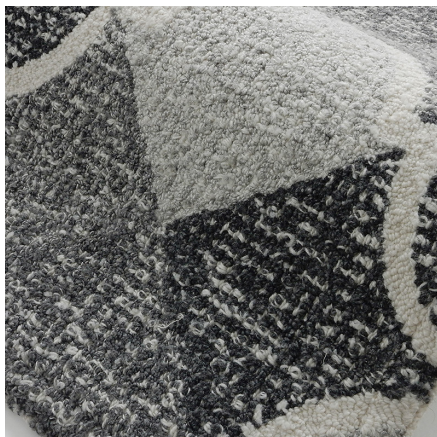


KESHIME
Lagoon

Hand Tufted



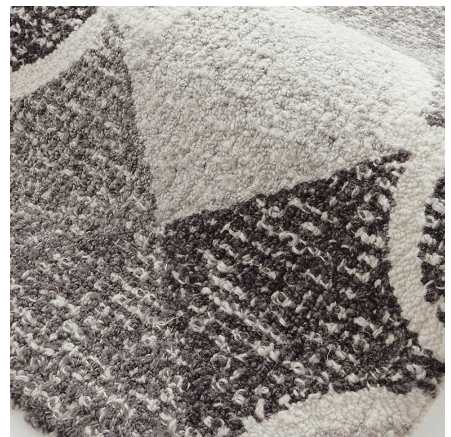
Additional Colorways



Marble



Marina



Woodland



SERAPION
Wedgewood

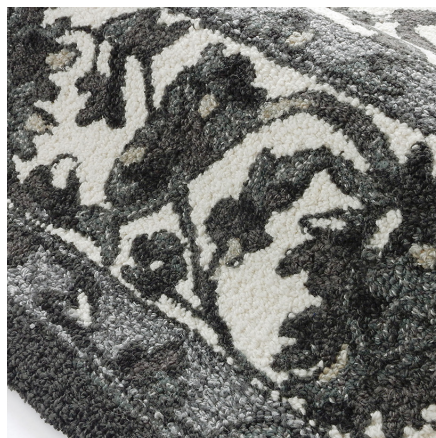
Hand Tufted



Additional Colorways



Lagoon



Woodland



CRACKITT
Marina

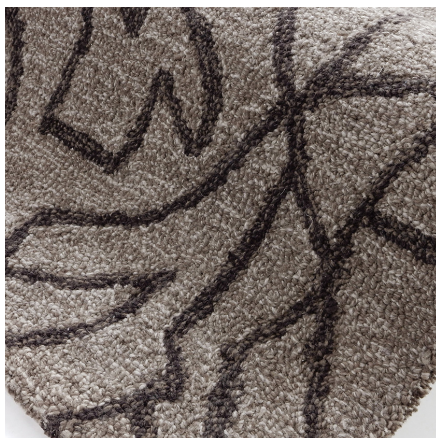
Hand Tufted



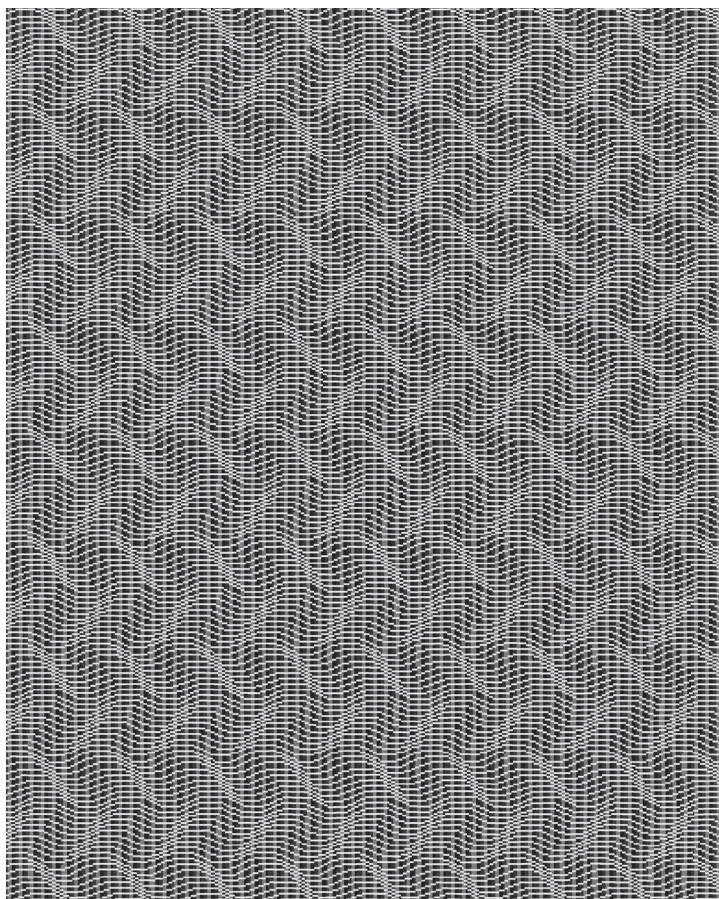
Additional Colorways



Lagoon



Earthen



HIGHWAVE
Woodland

Hand Tufted

Additional Colorways



Latte



Lake





CHANELLE
Breeze

Hand Tufted



CHANELLE
Lagoon

Hand Tufted



CHANELLE
Marina

Hand Tufted



CHANELLE
Coco

Hand Tufted



CHANELLE
Beach

Hand Tufted



CHANELLE
Woodland

Hand Tufted

GENERAL INFORMATION

For Indoor & Outdoor use providing excellent performance PET Yarn (Polyethylene Terephthalate) is a material that is made from recycled plastic bottles. Characteristics include: superb strength, colorfastness and soft texture. It is non-allergenic. PET Yarn has a tolerance for water or moisture and resistance to staining, fading, mold, mildew, abrasion and sunlight. It is sustainable and recyclable.

This is a handmade product, variations in overall size up to 3%-5% and texture may occur. Weave lines, shear marks, and striations may appear in the carpet or rug. Slight color striations, shading or watermarkings are a normal occurrence. These natural irregularities are inherent characteristics of handmade carpets and are not to be considered manufacturing defects. Shedding and sprouting often occur in handmade floorcoverings. Handspun yarns may sometimes release ends of yarn that "sprout" or "fuzz" above the pile surface. If yarn extends beyond the carpet's surface, simply clip it off so it is level with the surface pile and vacuum. DO NOT PULL loose fibers. Rugs/samples may oxidize over time. EST2021

CARE & MAINTENANCE

- Lay area rug on flat surface and allow time to settle.
- Frequent vacuuming with a quality machine. Do not use a vacuum with a beater bar as this may cause damage.
- Rotate the rug every three months for even wear.
- To prolong the life of the rug, store rug away from inclement weather, avoiding heavy rain, snow and standing water.
- Use of a rug pad is recommended
- Use protectors under the legs of heavy furniture to avoid pile flattening.
- Not recommended for heated floors
- Do not machine wash
- Using a soft nylon brush, clean both sides of the rug monthly with a solution of mild dish soap and water.
- Always dry in sunlight by hanging or laying out the rug, flipping it over to make sure both sides dry thoroughly.

SPILLS & STAINS

- Blot spills from the surface immediately and gently dab with a clean, damp cloth.
- Spot clean as needed using a damp (not wet) cloth with plain water. If the stain remains, (test a small area) use a mild detergent to blot the area or gently rub until the stain starts to lift. Rinse thoroughly with clean water and let air dry.
- For stubborn stain removal, use a one part white vinegar to two parts water solution. A tablespoon of bleach may be added but ensure to test a small inconspicuous area first (avoid the use of bleach on all other types of rugs). Rinse thoroughly.



PSS004-EZ
 0010-EZ
 FF01045-AF
 PJ802SM-EZ
 F0862-M
 FF01050-EZ
 FF01047-EZ
 FF01048-EZ
 FF01049-EZ
 FF01054-EZ
 FF01052-EZ
 FF01056-EZ
 PJ832SM-EZ
 PJ814SM-EZ
 PK241SM-EZ
 P4231SM-EZ
 P2358SM-EZ



PK242SM-EZ
 P5348CM-AF
 PE821SM-EZ
 PK239SM-EZ
 PJ808SM-EZ
 PP805SM-M
 PE712SM-EZ
 P4376SM-M
 P4376SM-AF
 P4251SM-AF
 P4251SM-EZ
 PK518SM-AF
 PK687SM-AF
 PE726SM-EZ
 P0896SM-M
 P5909SM-AF
 P5909SM-EZ
 P3138SM-AF
 P3138SM-EZ
 P3981SM-EZ
 P3125SM-EZ
 PE632SM-M
 PE632SM-EZ
 PE632SM-AF
 PP486SM-M
 PP486SM-EZ
 PK537SM-M



P7011SM-AF
 PK394SM-EZ
 P4018SM-EZ
 P7009SM-AF
 PK590SM-EZ
 P4310SM-EZ
 P6904SM-EZ
 PJ137SM-EZ
 P2128SM-EZ
 PK243SM-AF
 PK243SM-EZ
 P2667SM-EZ
 PJ824SM-M
 PJ824SM-EZ
 P2322SM-EZ
 P2180SM-EZ
 P4885SM-EZ
 P3009SM-EZ
 PK591SM-EZ
 P4541SM-EZ
 P1406SM-M
 P4453SM-EZ
 P3812SM-EZ
 P2855SM-EZ
 P4339SM-EZ
 PP259SM-EZ
 PP500SM-EZ



PK592SM-EZ
 PJ811SM-EZ
 PJ822SM-EZ
 P3139SM-EZ
 PP074SM-EZ
 P2361SM-EZ
 P7008SM-AF
 P5677SM-EZ
 PJ819SM-EZ
 P5233SM-EZ
 P1858SM-EZ
 P5878SM-EZ
 P5579SM-EZ
 P4514SM-EZ
 P4290SM-EZ
 P4786SM-EZ
 P2396SM-M
 PK240SM-EZ
 P4913SM-EZ
 P2252SM-EZ
 P2853SM-AF
 P2853SM-EZ
 PP419SM-AF
 P2544SM-EZ
 P5809SM-AF
 P5809SM-EZ
 PP419SM-EZ
 PP258SM-EZ
 PP419SM-M

STANDARD COLORS



ONE FAMILY. ONE PASSION. ONE RESOURCE.

FABRIC | FURNITURE | TRIM | CARPET | WALLCOVERING | CURATEDKRAVET

kravetcarpet® US 800 648 5728 ext. 2536 Fax 516 293 1784 Canada 800 535 3258
kravet.com/carpet