

VINTAGE CHIC



kravetdraperyhardware

At a Glance

VINTAGE CHIC

- 5 finial styles; 4 wood finishes
- 5 wood finishes – 4 Standard; 1 additional Vintage Ring finish
- 2" wooden rod size; available in 3 lengths
- Coordinating rings and brackets
- In-Stock Collection

FINISHES

All natural wood used in the Vintage Chic collection may be subject to variations from piece to piece due to the natural materials used.

All photography is, at best, a representation of color. Actual finishes may vary slightly.

RECOMMENDATIONS

Please consult a professional installer for the application of all drapery hardware products. We recommend a minimum of three support brackets for every 8 feet of rod length.

When a wood rod is re-cut to be made smaller, a new opening/hole will need to be made. That opening should be $\frac{3}{16}$ or 5mm to allow for the finial screw to fit properly into the drapery rod.

A double sided screw must be used to join two wood rods together. Whenever two wood rods are connected, a bracket is required for additional support.



FINIALS

Sold individually.

All finials listed are suitable for use with Vintage Chic 2" diameter wooden rods.

VINTAGE CHIC

**SCEPTER
FINIAL**

3 7/8" W



5 3/4" L



PICKLED OAK
HDW20133-16



CHESTNUT
HDW20133-616
shown left



DRIFTWOOD
HDW20133-106



JAVA
HDW20133-66

**VINTAGE
ROSE
FINIAL**

4" W



6" L



PICKLED OAK
HDW20130-16



CHESTNUT
HDW20130-616
shown left



DRIFTWOOD
HDW20130-106



JAVA
HDW20130-66

**AMFORA
FINIAL**

3 1/2" W



6 3/4" L



PICKLED OAK
HDW20128-16



CHESTNUT
HDW20128-616
shown left



DRIFTWOOD
HDW20128-106



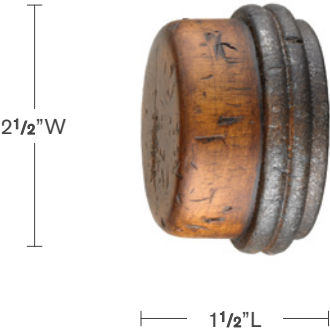
JAVA
HDW20128-66

FINIALS

Sold individually.
All finials listed are suitable for use with Vintage Chic 2" diameter wooden rods.

VINTAGE CHIC

RUSTIC END CAP



PICKLED OAK
HDW20131-16



CHESTNUT
HDW20131-616
shown left



DRIFTWOOD
HDW20131-106



JAVA
HDW20131-66

VINTAGE KNOT FINIAL



PICKLED OAK
HDW20132-16



CHESTNUT
HDW20132-616
shown left



DRIFTWOOD
HDW20132-106



JAVA
HDW20132-66

VINTAGE WOOD RODS

VINTAGE CHIC

Double sided screw available for joining wood rods: HDW20343.

All 2" diameter rods listed are suitable for use with Vintage Chic finials and drapery rod brackets.



PICKLED OAK

4 FT: HDW20125-16

6 FT: HDW20127-16

8 FT: HDW20126-16



DRIFTWOOD

4 FT: HDW20125-106

6 FT: HDW20127-106

8 FT: HDW20126-106

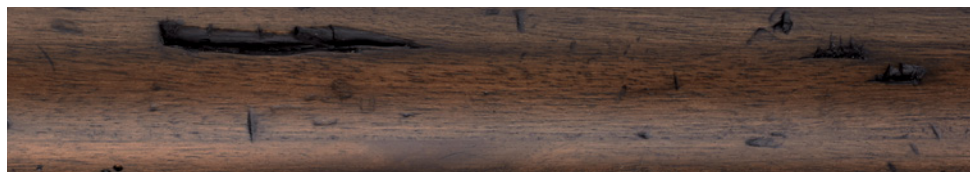


CHESTNUT

4 FT: HDW20125-616

6 FT: HDW20127-616

8 FT: HDW20126-616



JAVA

4 FT: HDW20125-66

6 FT: HDW20127-66

8 FT: HDW20126-66

RINGS

VINTAGE CHIC

Sold individually.

All rings listed are suitable for use with Vintage Chic 2" diameter wooden rods.

Inside dia: 27/16"; Outside dia: 31/4"



PICKLED OAK
HDW20121-16

DRIFTWOOD
HDW20121-106

CHESTNUT
HDW20121-616

JAVA
HDW20121-66

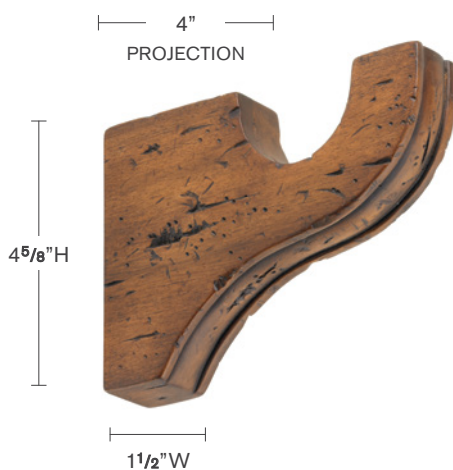
AGED IRON
HDW20121-81

BRACKETS

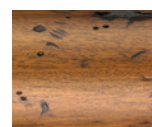
All brackets listed are suitable for use with Vintage Chic 2" diameter wooden rods.

In order to adjust the overall projection length of the Adjustable Loop Bracket, the wooden post component of the bracket must be cut to the desired length. Please consult a professional installer where applicable.

STANDARD BRACKET



PICKLED OAK
HDW20123-16



CHESTNUT
HDW20123-616
shown left

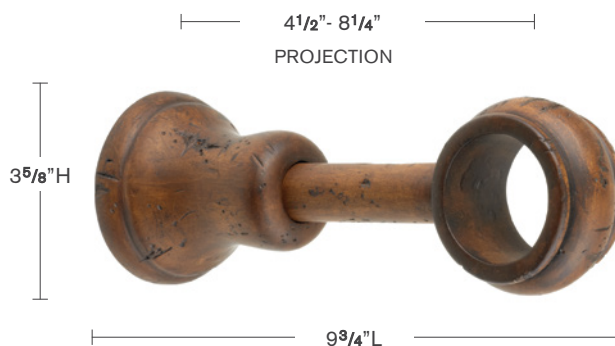


DRIFTWOOD
HDW20123-106



JAVA
HDW20123-66

ADJUSTABLE LOOP BRACKET



PICKLED OAK
HDW20124-16



CHESTNUT
HDW20124-616
shown left



DRIFTWOOD
HDW20124-106



JAVA
HDW20124-66



kravet® US 800 648 5728 Ext. 2519 CAN 800 535 3258 MX 01 800 777 1569
For the complete Drapery Hardware catalog, visit kravet.com/drapery-hardware