

© 2016 Kravet Contract

kravet contract

david hicks by ashley hicks

 CRYPTON | guaranteed in stock



[kravetcontract.com](http://kravetcontract.com)





## DAVID HICKS

---

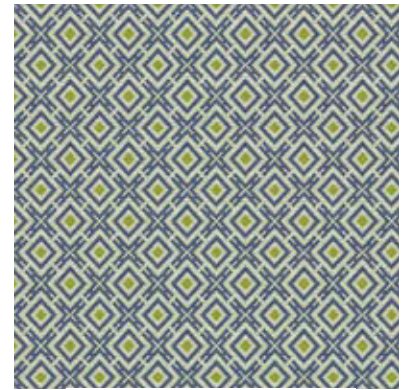
*by Ashley Hicks*

Kravet Contract introduces David Hicks Guaranteed In Stock Crypton fabrics. The durability of Crypton performance combines with the bold and geometric style of David Hicks – famed interior designer from the 1960s – to offer a collection that is just as stylish as it is resilient. David's son, leading interior designer Ashley Hicks, carries on his father's renowned style by designing collections adapted from, or inspired by, original Hicks designs. On-trend chevron patterns and iconic graphic designs range in a variety of rich colors. Crypton performance fabrics exceed contract standards for durability, making this collection ideal for high performance use. David Hicks Guaranteed In Stock Crypton is part of the Kravet Contract Guaranteed In Stock Program, ensuring orders up to 100 yards are shipped within 24 hours.





33930-411



33930-530



33930-640

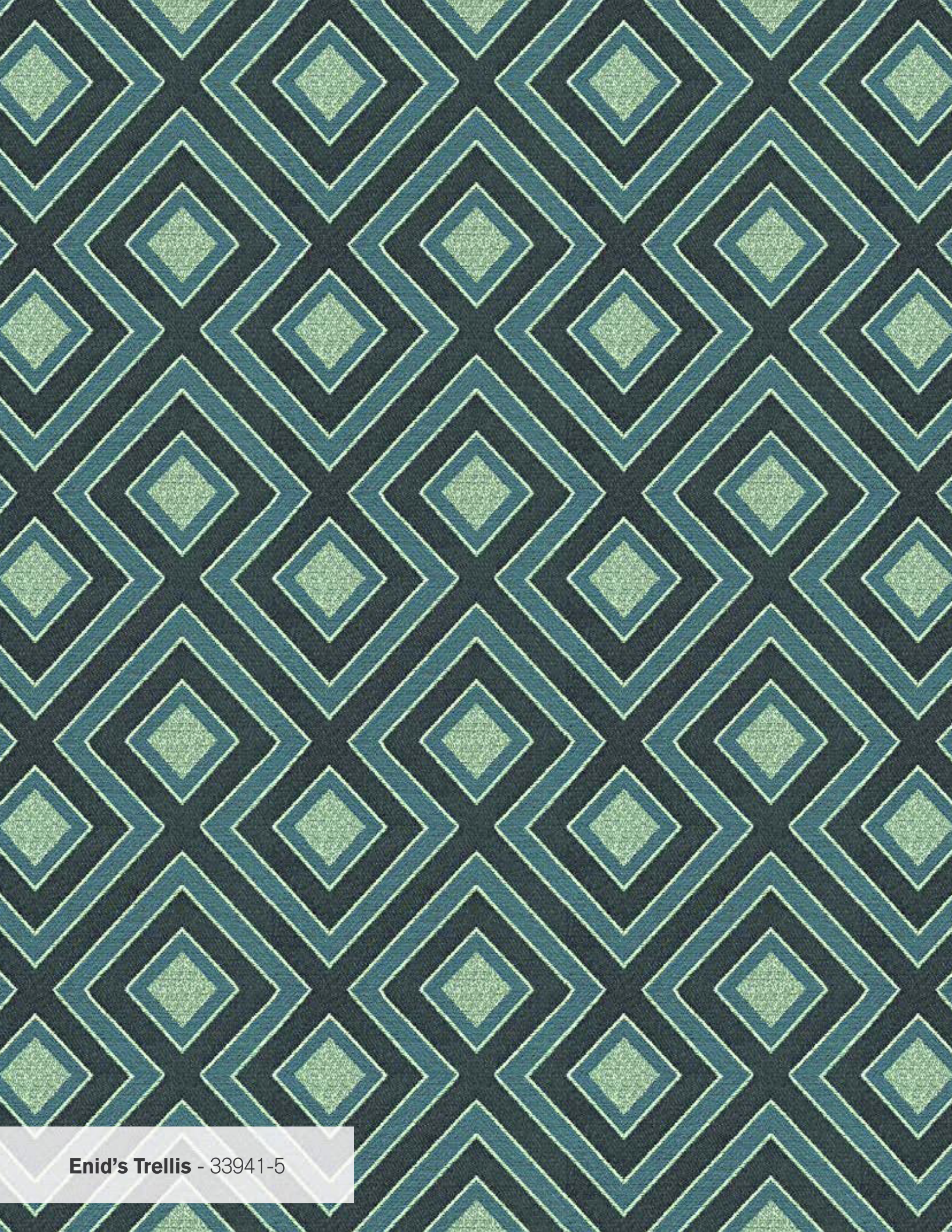


33930-712

## Monogram - 33930-311

David Hicks' logo of four H's – he put this on everything from his cars and houses to wallpaper and carpet. In 1971 he designed a collection of patterned bedlinen and Ashley Hicks' childhood beds always had sheets with this design.





**Enid's Trellis** - 33941-5





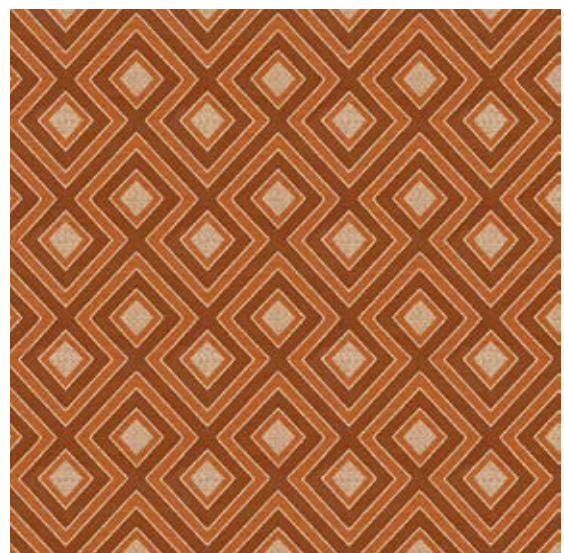
33941-4



33941-19



33941-3

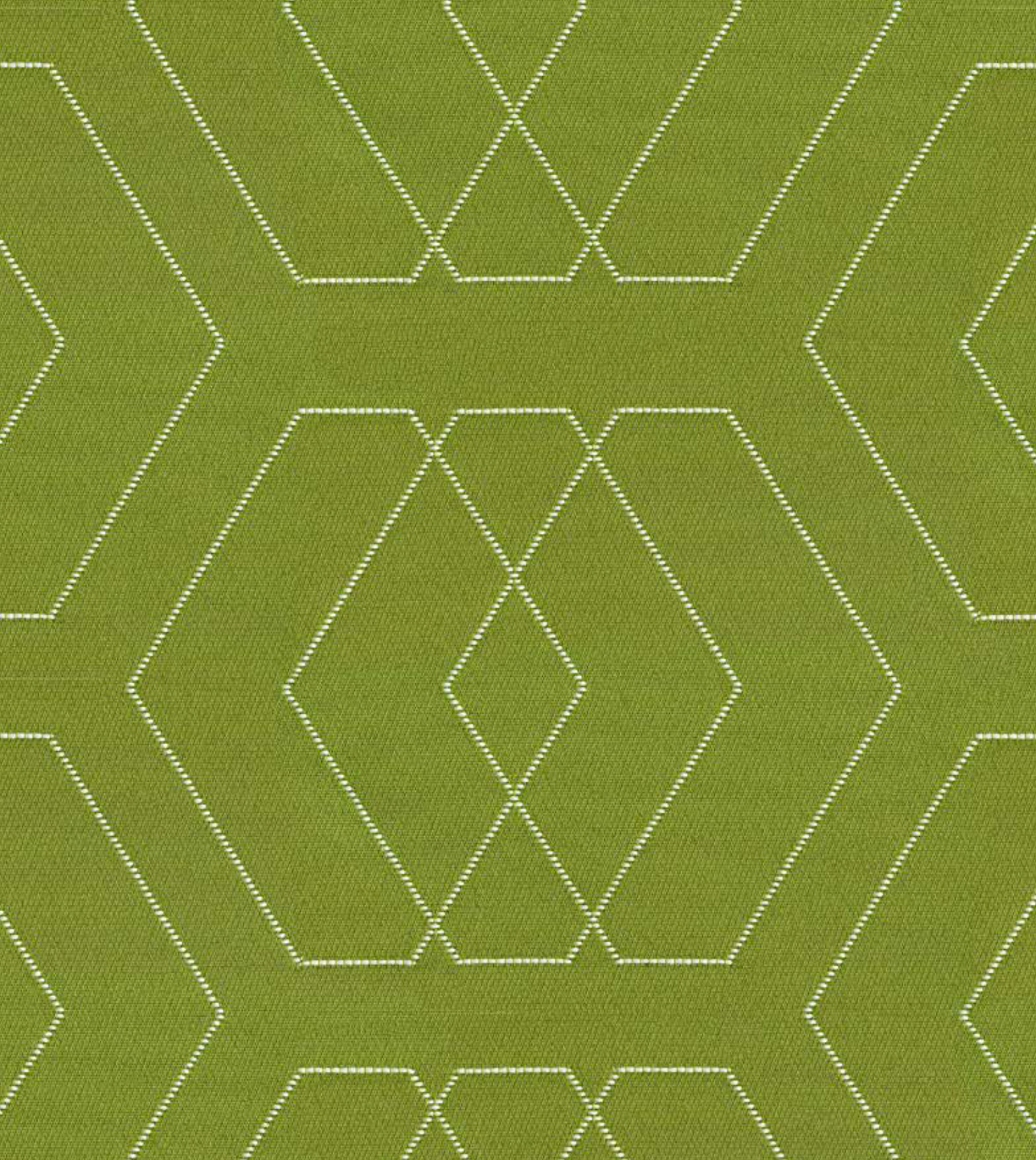


33941-612



33941-811





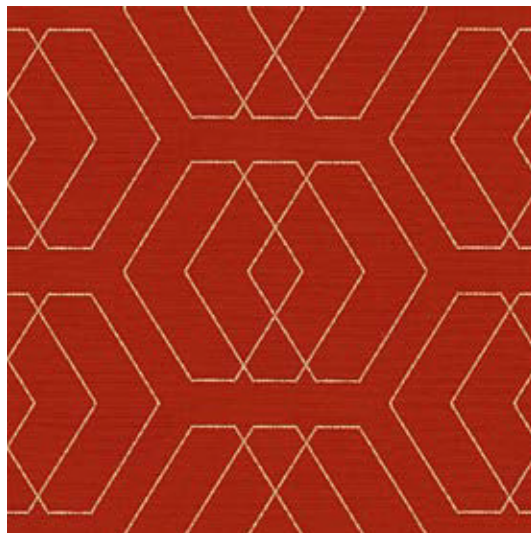
**Temple Robe** - 33939-3

Designed by Ashley Hicks in 2008 as an embroidery, inspired by old Japanese Buddhist fabrics.





33939-13



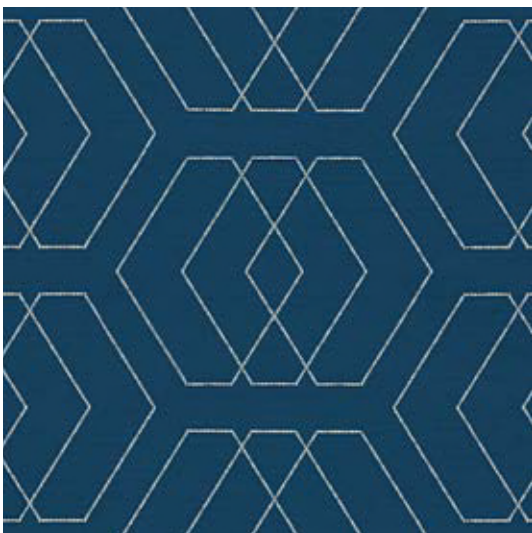
33939-19



33939-5

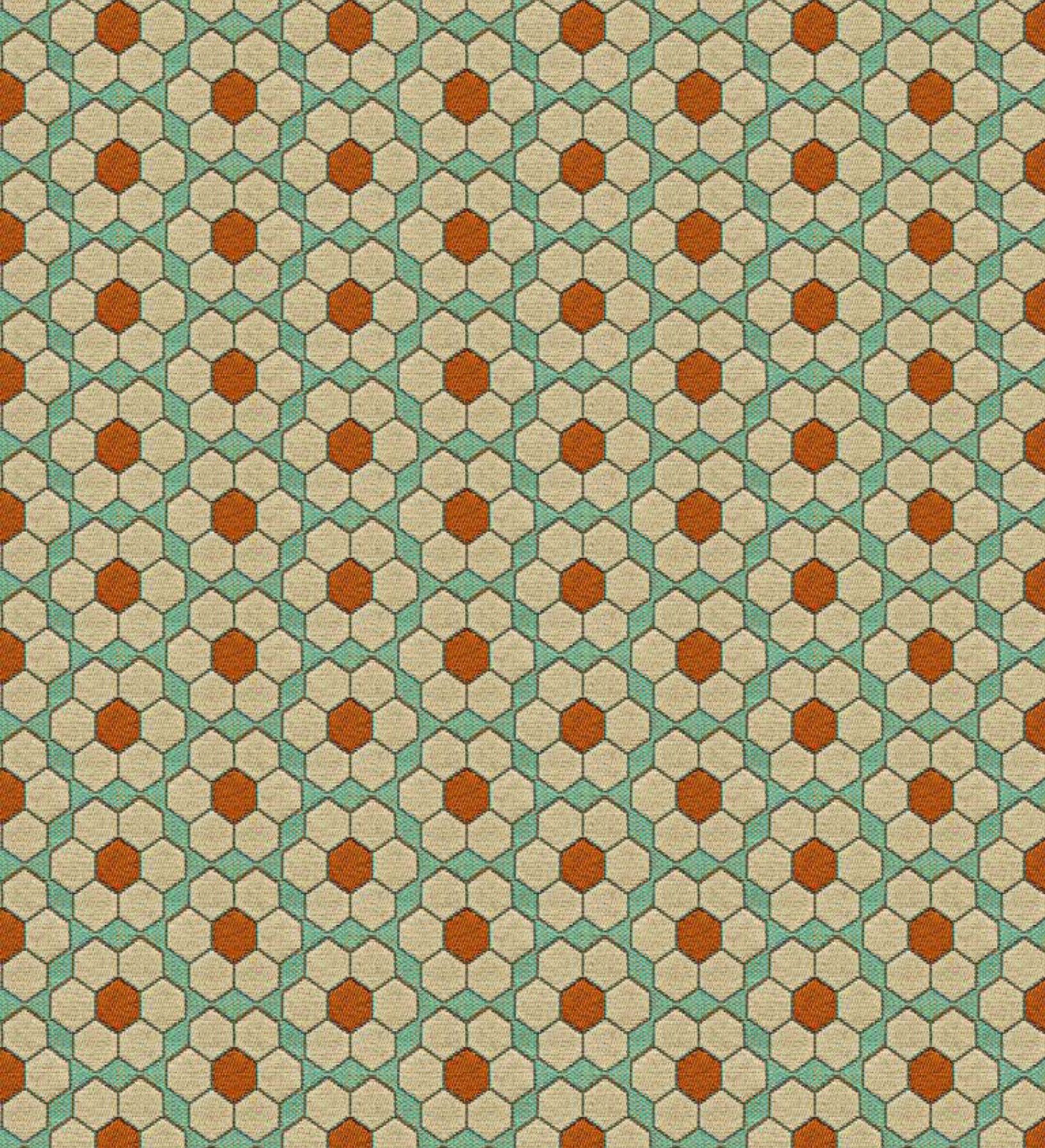


33939-21



33939-50

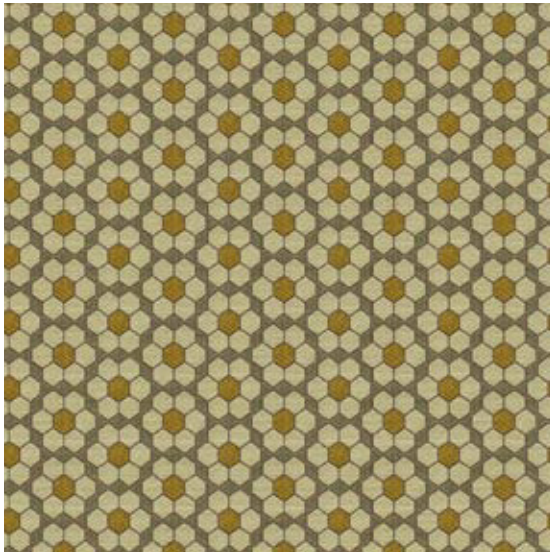




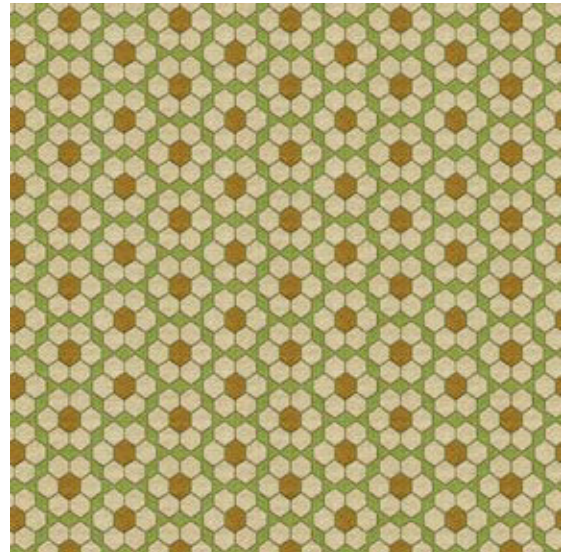
**Bursa Mosaic - 33943-512**

Inspired by a Turkish Ottoman tile design from 1450 in Bursa, this 1967 design by David Hicks was used in his US associate Mark Hampton's NY apartment soon afterwards.

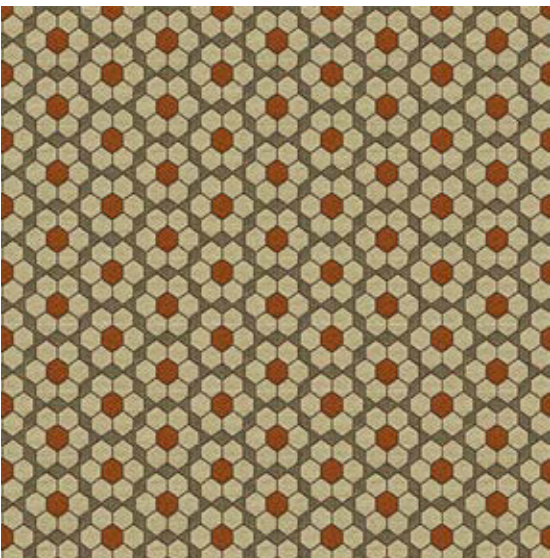




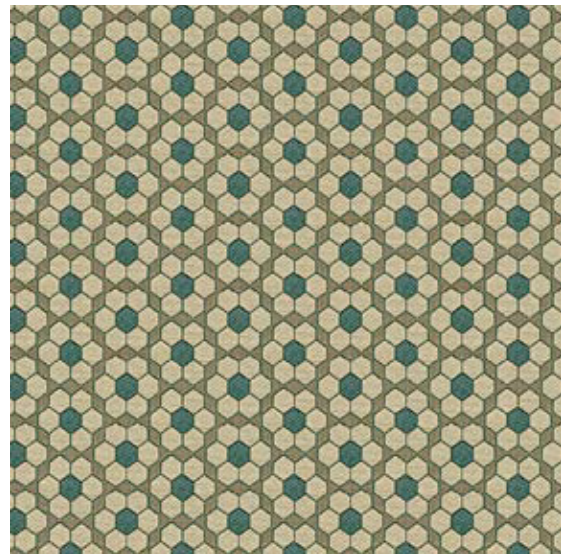
33943-640



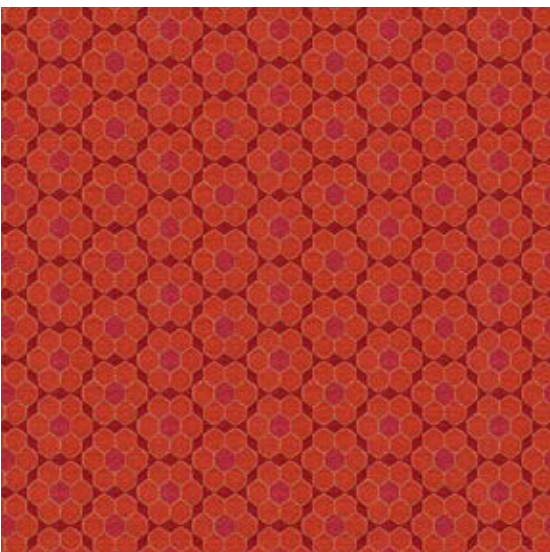
33943-340



33943-612



33943-516



33943-712





**Rory's Trellis** - 33942-712

Named after David Hicks' great friend Rory Cameron and his mother Enid, Lady Kenmare, known in the fashionable world as Lady Killmore although she did write in the Hickses' visitors book 'I did NOT kill my husbands.' They lived in the very beautiful Villa La Fiorentina on Cap Ferrat in the South of France, which was one of David Hicks' great inspirations.





33942-411



33942-135



33942-11



33942-30



33942-13



33942-740



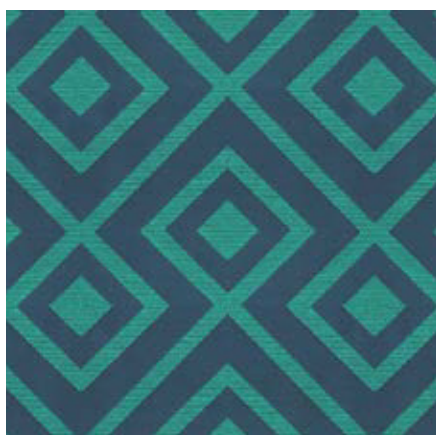
33942-311



33942-350

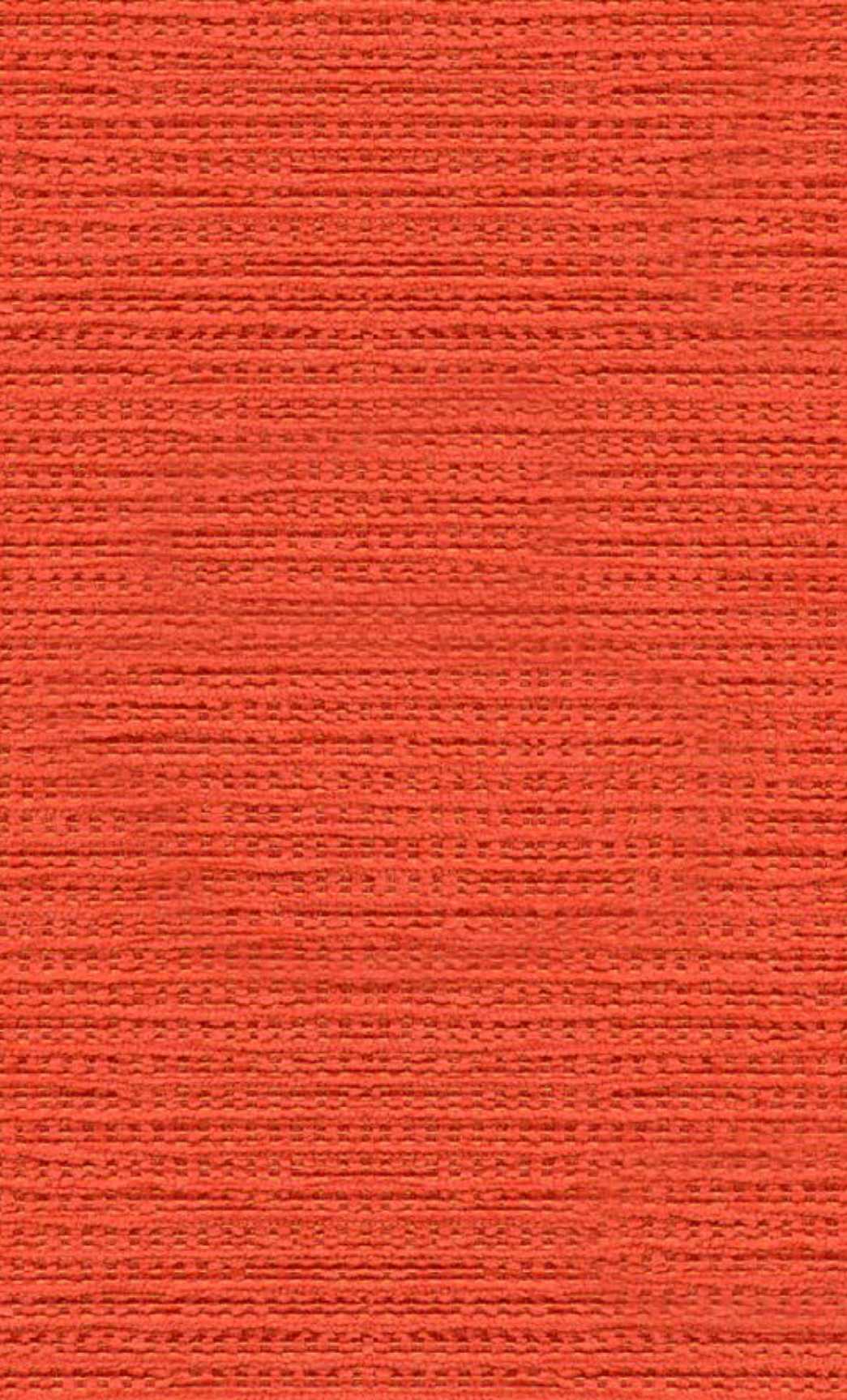


33942-81



33942-513



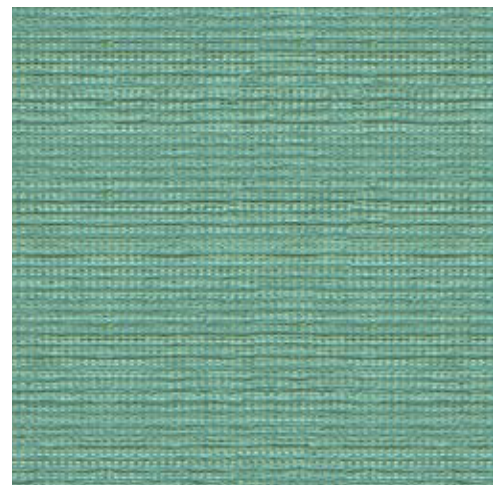


**Brightwell - 33924-12**

Named for the Hicks country house, The Grove, Brightwell Baldwin, Oxfordshire, to which David and Lady Pamela Hicks moved in 1980. Lady Pamela still lives there, as do Ashley and Katalina Hicks.



33924-11



33924-13



33924-3





33934-640

**Andre's Grille** - 33934-505

Inspired by a Japanese detail sketched by David in Kyoto and named after his friend and assistant designer André Louw.





33940-3



33940-5

## **Hexagonal House** - 33940-23

Originally designed by David Hicks in 1975 as a carpet, this was 'borrowed' by Stanley Kubrick the next year for the corridors of the Overlook Hotel in his movie *The Shining*, and repeated as a rather adult reference in *Toy Story* 30 years later.





### **Sergeant Hicks - 33931-11**

David Hicks did his two years' National Service in the Royal Army Education Corps, as an art instructor, with a Sergeant's stripes on his uniform. He spent most of the time visiting nearby country houses and museums, 'training his eye.' During art classes in the studio, he would let the soldiers play around, throwing paint at each other. Once an officer came in on a tour of inspection and asked what was going on. 'Modern Art, Sir' was Hicks' reply.





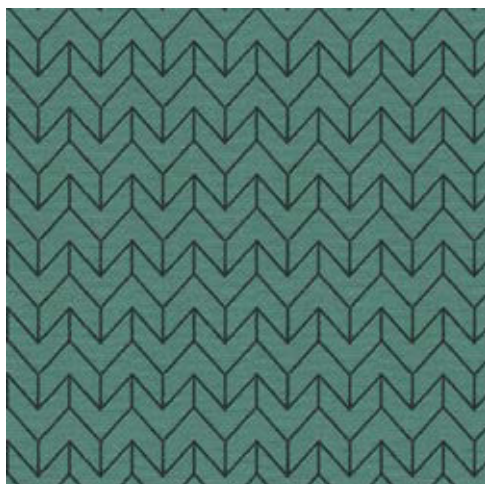
33931-13



33931-4



33931-23



33931-5



33931-97




33931-3



33931-19





US 888 891 4112 CAN 800 535 3258  
kravetcontract.com

**Back Cover** Left to right: 33943-712, 33942-740, 33931-97, 33942-712. **Front Cover** Fabrics clockwise from top left: 33943-640, 33931-13, 33942-513, 33941-3, 33934-505, 33931-4, 33931-5, 33940-5, 33930-530.