

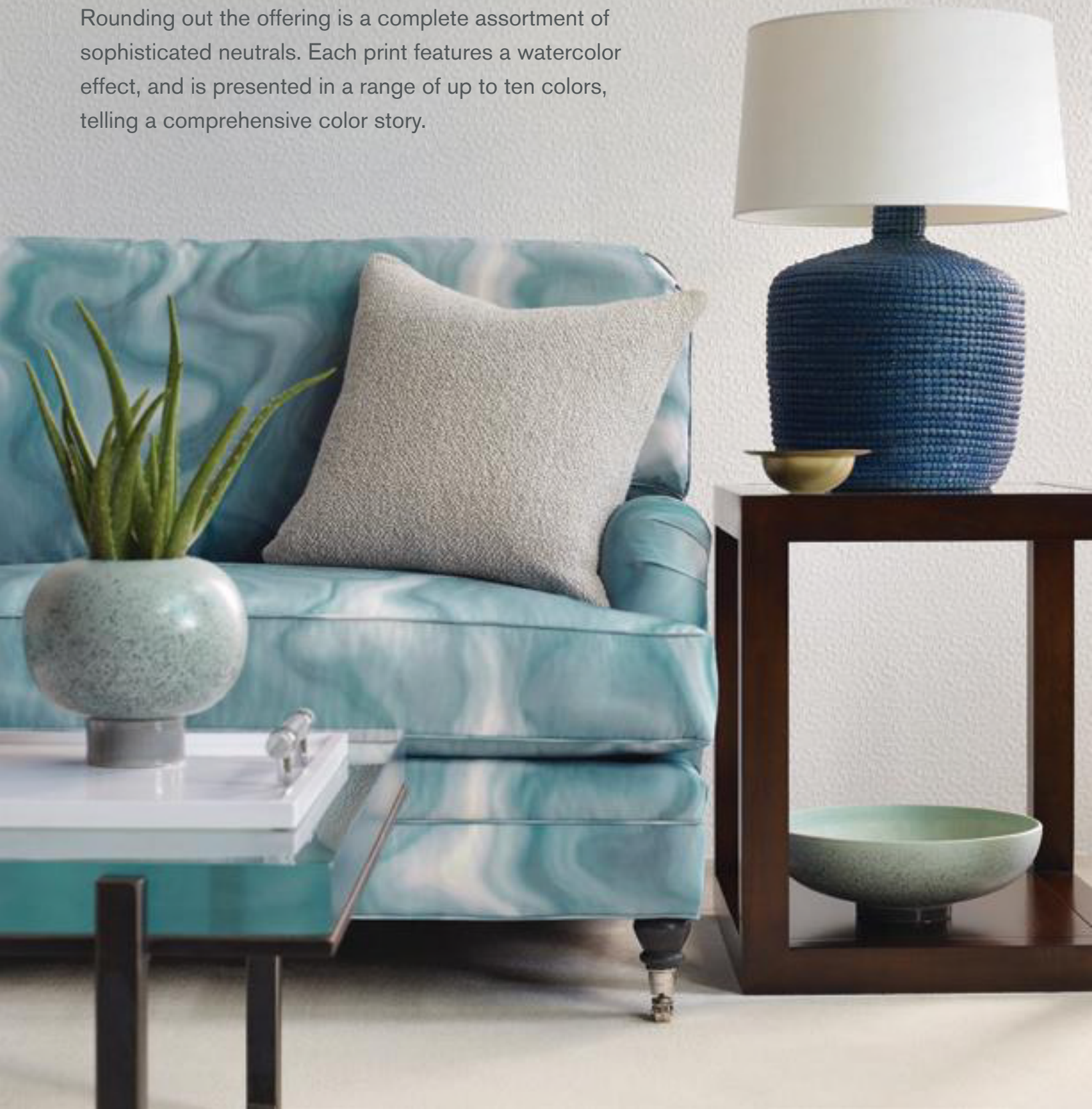
The text 'Terra PRINTS' is centered over the fabric samples. 'Terra' is written in a large, elegant, white script font, with a thin white horizontal line above it. Below 'Terra', the word 'PRINTS' is written in a smaller, white, all-caps, sans-serif font.



Kravet Couture introduces **Terrae Prints**, a collection of exclusively designed prints executed with simplicity and color in mind.

Blossoming flowers, rich marble textures and undulating waves are all interpreted with a painterly hand, beautifully showcasing the organic design inspiration behind the collection. These patterns are offered in a broad range of color, from modern pinks, lilacs and spice tones to cool blues and fresh greens.

Rounding out the offering is a complete assortment of sophisticated neutrals. Each print features a watercolor effect, and is presented in a range of up to ten colors, telling a comprehensive color story.



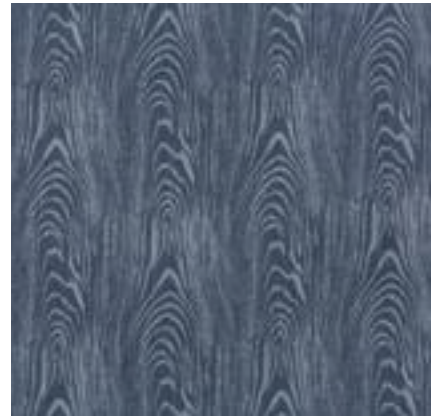




Azzurro-T - Ocean



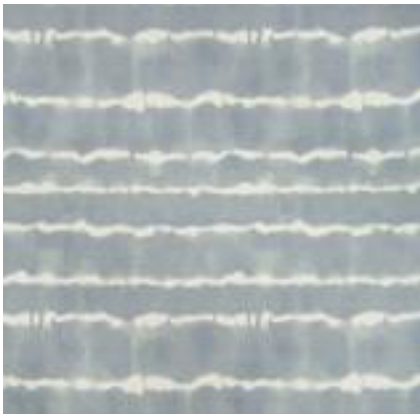
Echino - Chambray



Hallerbos - Indigo



Linework - Platinum



Baturi - Chambray



Makai - Indigo

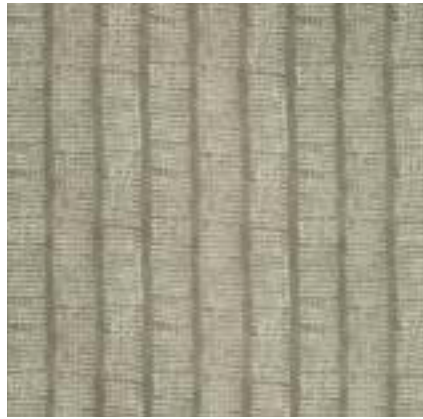








Hallerbos - Graphite



New Lines - Fawn



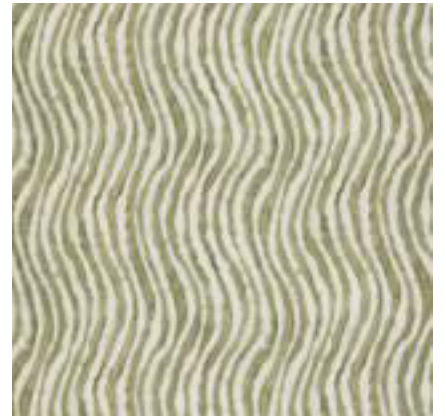
Azzurro-T - Graphite



Awash - Amethyst



Echino - Fawn



Makai - Pine



Echino - Palm



Hallerbos - Ochre



Linework - Lilac



Hallerbos - Amber



Makai - Nutmeg



Echino - Blush







