



JK kravet

the
GREENWICH
collection



GREENWICH is a traditional collection that celebrates the rich heritage of the Kravet archives and its assortment of antique documents. This classic selection of prints, embroideries, velvets and textures have been beautifully reinterpreted for today, with a fresh new color palette and a modern style sensibility. The collection offers an updated look to a traditional aesthetic that we all know and love.

LAMBROOK

This charming tree of life pattern has been derived from an antique linen document discovered in the Kravet archive. Birds and butterflies intermingle with fanciful flowers and patterned foliage. Updated with fresh new colors and printed on 100% linen, LAMBROOK will bring charm to both living room and bedroom interiors.



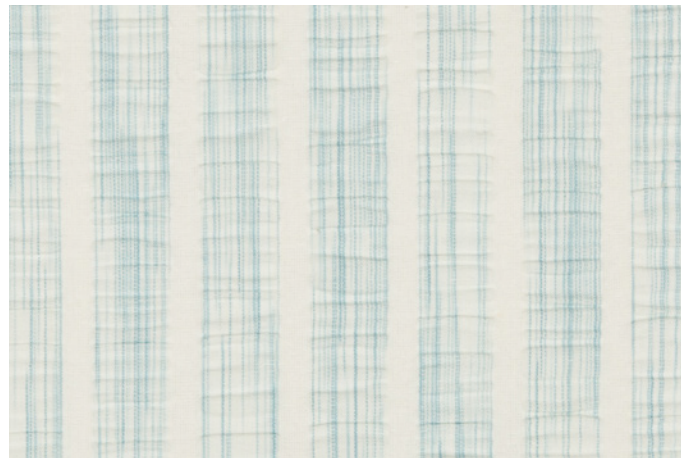
TAPELEY

This classic trellis pattern has been reinterpreted with modern simplicity in this garden inspired embroidery. A fresh green, neutral linen and soft mineral, all on a warm white blended of linen and cotton, layer in beautifully with the multi colored prints in the collection.



PARCEVALL

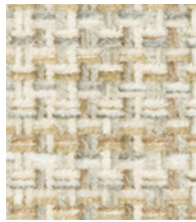
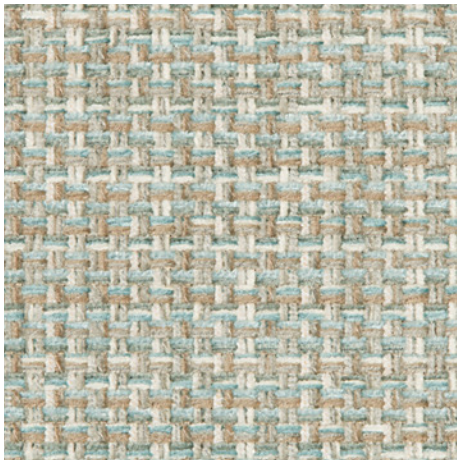
A light and airy seersucker stripe, PARCEVALL lends a casual air to the Collection. In 100% cotton and offered in a fresh chambray blue, this fabric is a versatile option for window treatments, pillows, and duvets.



ECHO CYPRUS

ECHO CYPRUS from our design partners at ECHO, offers a large, sweeping paisley design on 100% linen. The detailed motifs form a symmetrical design that centers beautifully on seat cushions or draperies. Six colorations range from soft neutrals to bright multis.





WESTHIGH

A rich upholstery texture offering a medley of color chenille in both the warp and weft directions, delivering high abrasion with a fashion statement. Available in 3 colorways, a great body cloth to complement the statement prints.



AVENHAM

With its peonies framed by swirling, leafy scrolls interspersed with tulips and with a delicate distressed texture running throughout, AVENHAM makes a grand statement for drapes and furniture. Adapted from an original hand painted document this all linen print is offered in three colorways: fresh pinks and greens, clear, crisp blues and a lovely soft aqua with neutral overtones.



HIGHHOPE

With its Moroccan roots HIGHHOPE brings global interest to the classic look of the Greenwich collection. The two toned embroidered ogee design gets additional visual interest with a textured stitch within the frame outline of the motif. Offered in a rich terracotta on cream, crisp blue on white and Ivory on a soft mineral ground.



WINSFORD

Traditional damask motifs of flowers and pomegranates grow from curling vines on this 100% cotton print. The silhouetted motifs combined with naïve detailing give WINSFORD a charming, fresh new look to a classic design.

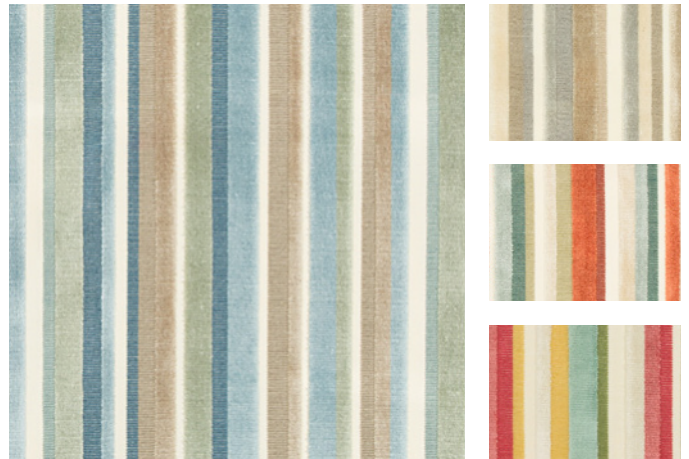
Offered in soft green, watery blue and neutral linen, WINSFORD will work in a wide variety of interior schemes. *Document story: A Western version of Ottoman or Turkish design with stylized pomegranates and carnations.*



BODENHAM

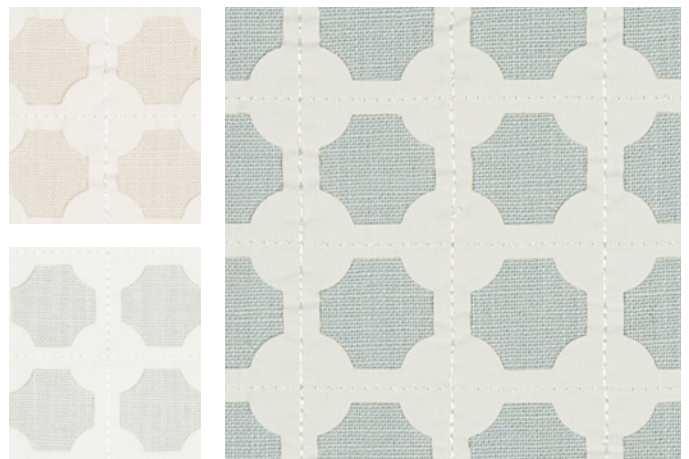
The cut and loop velvet stripe BODENHAM offers textural interest with its plush, multicolored high-low effect.

The pattern of the asymmetrical stripe, together with the rich color palette, ranging from jewel tones to blue hues to greys with neutral accents, gives BODENHAM a modern, fashion forward look.



COTHAY

Innovation meets tradition when a laser cut lattice is applied on a linen viscose ground. This freshly colored small scale geometric makes a delightful companion to the grander prints in the collection.





BARNSDALE

This classic 6.75" repeat buffalo check BARNSDALE has additional interest with a stria warp and space dyed wefts woven with a small chevron texture, offering a blend of values within the color range. Available in four soft colorways, BARNSDALE is the perfect complement to the statement prints in the collection.



WOLLERTON

The undulating leafy vine in WOLLERTON forms a subtle stripe alongside the growing branch of fruits and flowers in this batik inspired design adapted from a document in the Kravet Archive. With its dotted detail and softened edges WOLLERTON's monochromatic colorations range from fresh leaf green and cornflower blue to a softer chambray and quieter neutrals of pewter and sand. *Document story: Resist print/ batik style; traditionally done in indigo; probably made in England for American market; to the taste of the Dutch settlers of NY Hudson River.*





