



INDOOR • OUTDOOR FABRICS



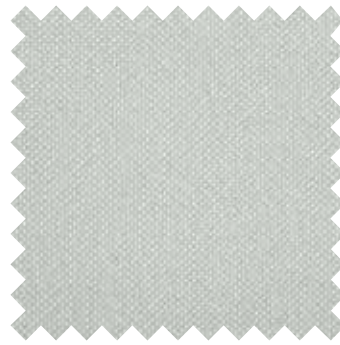
“What makes collections from Echo so special is that we not only have an unmistakable signature look and feel to our colors and patterns, but we make it very easy to decorate with our fabrics. We have an unusual consistency of strong designs that are both impactful individually, yet work well together.”

—Meg Roberts, Design Director for Echo Home

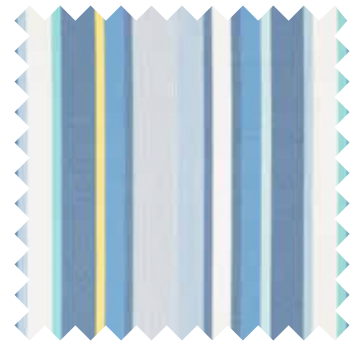
Echo's Ibiza collection
for Kravet transforms
performance qualities into
vibrant patterns and color
for both indoor and
outdoor use.



34546-5



34545-11



34503-540



34558-513

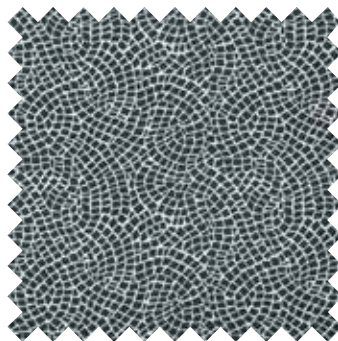


34536-50

Known for beautiful, fresh
happy hues and timeless
yet timely design, Echo
continues its celebrated
style in its latest
collaboration with Kravet.



34499-515

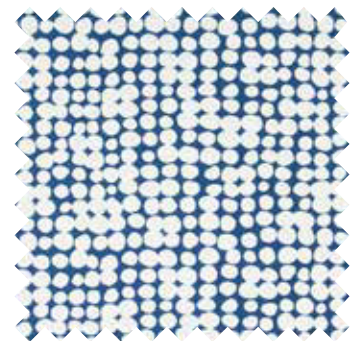


34540-50

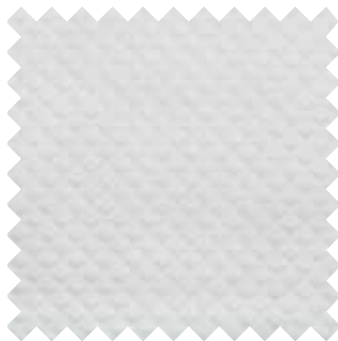
Inspired by the rustic
beauty of the island of
Ibiza, this collection is an
exploration of modern
global versatility.



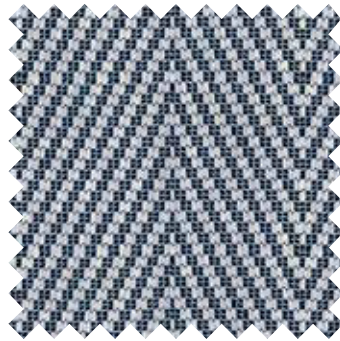
34538-11



34547-5



34523-101



33495-50



34542-50

Suzanis, modern ikats,
paisleys, vibrant stripes,
and small geos create a
mix of bold statements and
small-scale weaves.



MAESTRO-50

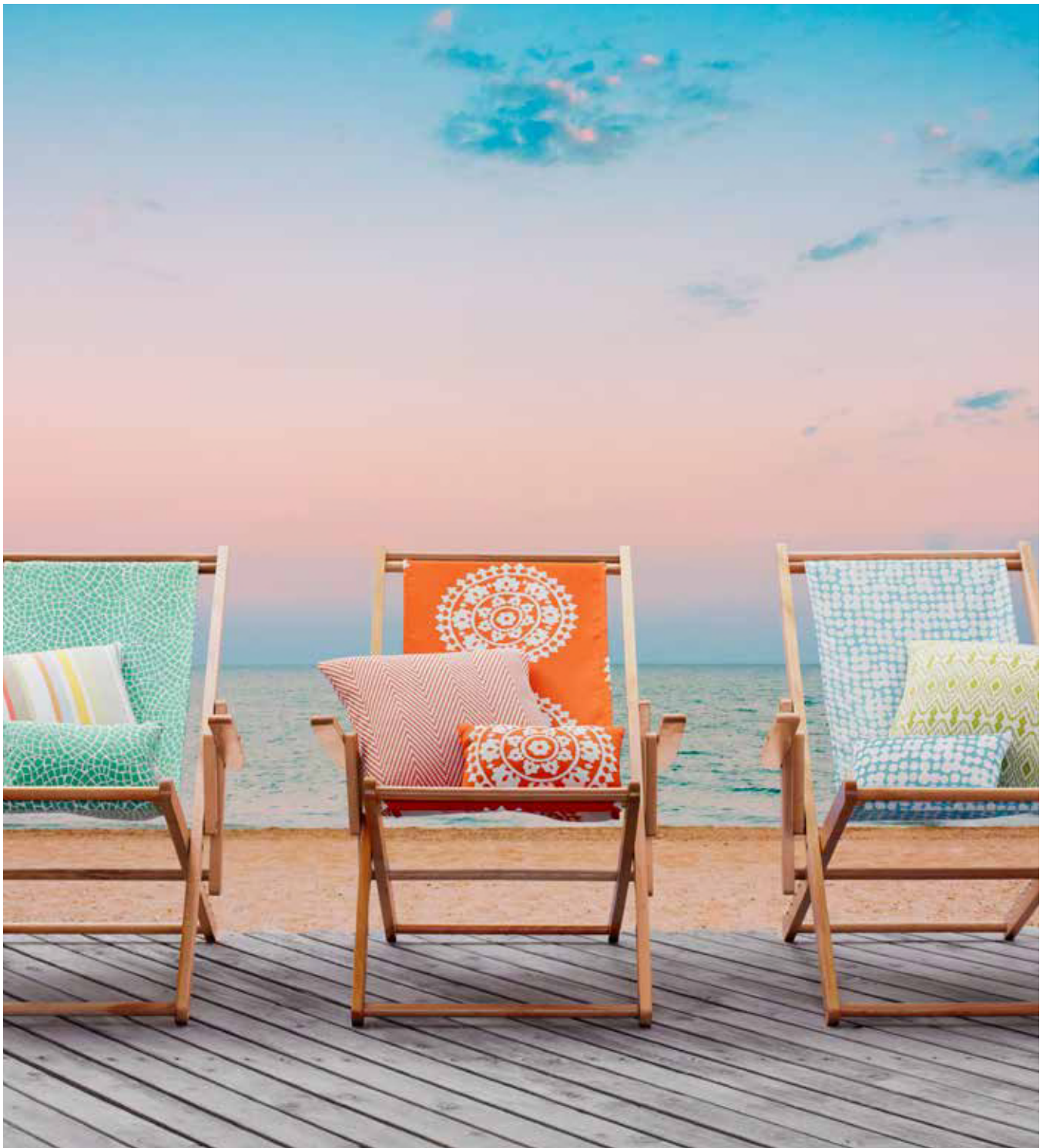
The Echo Ibiza collection
makes for easy layering
and endless options with
durability and style.



31695-515



31696-50



Front Cover: Poufs (top to bottom, left to right): Darby Dot in Lime 34547-3, Corsis Stripe in Tropicale 34503-1615, Scandikat in Lime 34536-3, Darby Dot in Ocean 34547-15, Artemest in Tropicale 34558-915, Mimar in Tangelo 34546-12; Pillows (top to bottom, left to right, clockwise): Artemest in Tropicale 34558-915, Eden Rock in Seaglass 34540-313, Darby Dot in Lime 34547-3, Corsis Stripe in Tropicale 34503-1615, Eden Rock in Seaglass 34540-313, Scandikat in Lime 34536-3, Kali Chevron in Tangelo 33495-12, Darby Dot in Ocean 34547-15, Scandikat in Lime 34536-3, Kali Chevron in Tangelo 33495-12, Corsis Stripe in Tropicale 34503-1615, Mimar in Tangelo 34546-12 **Interior:** (left to right): Bendi in Indigo 34542-50, Cruiser Strie in Cobalt 34499-515, Darby Dot in Cobalt 34547-5, Magnifikat in Cobalt 31696-50, Artemest in Ocean 34558-513, Vibrata in Ocean 34501-513, Corsis Stripe in Maritime 34503-540 **Back:** Slings (left to right): Eden Rock in Seaglass 54540-313, Mimar in Tangelo 34546-12, Darby Dot in Ocean 34547-15; Pillows (left to right, back to front): Corsis Stripe in Tropicale 34503-1615, Eden Rock in Seaglass 54540-313, Kali Chevron in Tangelo 33495-12, Mimar in Tangelo 34546-12, Scandikat in Lime 34536-3, Darby Dot in Ocean 34547-15

For the complete Echo Ibiza collection, visit [kravet.com](https://www.kravet.com)

kravet® US 800 645 9068 CAN 800 535 3258 UK +44 (0) 1202 266 995 MX 01 (800) 777 1569 [kravet.com](https://www.kravet.com) [CuratedKravet.com](https://www.CuratedKravet.com)