

+

Creating polypropylene, Shaping a better future

Flexible and Rigid Packaging

PolyMirae supplies the best
polypropylene in the world



Product Portfolio

Flexible packaging

Segment	Grade	MFR (dg/min)	FM (Kg/m2)	Impact (@23°C)	Typical applications & features
BOPP	<i>Moplen</i> HP522H	2	15,500	5	Balanced stiffness and processability/ Metallization
	<i>Moplen</i> HP622J	3	16,000	4	High speed processability with stretchability/ Metallization
	<i>Moplen</i> HP623J	3	15,500	4	High speed processability with stretchability/ Lamination
	<i>Moplen</i> HP624J	3	15,500	4	High speed processability with stretchability/ Printability
	<i>Moplen</i> HP625J	3	15,000	4	High speed processability with stretchability
	<i>Moplen</i> HP626J	3	16,000	4	High speed processability with stretchability/ AB/ Skin layer
	<i>Moplen</i> HP627J	2	14,300	2.5	Balanced stiffness and processability/ Synthetic paper
	<i>Moplen</i> HP629J	3	15,500	4	Balanced stiffness and processability/ Lamination
	<i>Adstif</i> HA822J	3.3	21,000	3	Very high stiffness and thermal resistance
	<i>Moplen</i> EP322M	9	11,000	15	Semi matt skin layer
CPP	<i>Moplen</i> HP512M	8	15,000	3	General film, Color stability
	<i>Moplen</i> HP513M	8	16,000	2	Metallization
	<i>Moplen</i> EP110J	3	6,500	NB	Battery cell pouch, Retortable, protective film
	<i>Moplen</i> EP310JHP	3	14,000	NB	Retortable film
	<i>Moplen</i> EP310J	5	13,000	20	Retortable film
	<i>Moplen</i> RP210L	6	9,000	5	General film, Battery cell pouch
	<i>Metocene</i> HM2089	9	14,500	2	Metallization, low migration

The above values are our lab data only for customer reference and should not be construed as product specifications. These values may shift as additional data are accumulated.

High stiffness and high heat resistance BOPP

Adstif HA822J

Benefits

- Excellent stiffness
- High heat resistance
- Printing layer for recyclable PP mono-material packaging

Typical applications

- Food packaging
- Industrial packaging

Properties		Test method (ASTM)	Unit	Adstif HA822J	Conventional BOPP Grade
MFR	2.16kg/230°C	D1238L	g/10min	3.3	3
Tensile strength	@Yield	D638	kg/cm ²	390	370
Flexural modulus		D790	kg/cm ²	21,000	16,000
HDT		D648	°C	120	106



The above values are our lab data only for customer reference and should not be construed as product specifications. These values may shift as additional data are accumulated.

Semi matt BOPP film skin layer

Moplen EP322M

Benefits

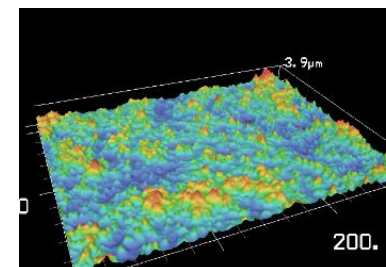
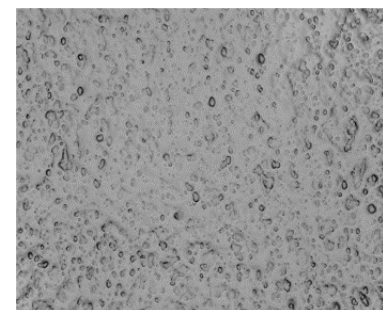
- Good processability without inorganic modifiers
- Appropriate roughness for semi matt film
- Good printing performance

Typical applications

- Food packaging
- Industrial packaging

Properties		Test method (ASTM)	Unit	Moplen EP322M
MFR	2.16kg/230°C	D1238L	g/10min	9
Flexural modulus		D790	kg/cm ²	12,000
IZOD strength	@23°C	D256	kg cm/cm	15
Gloss (60°)	40 μ m Film		%	11
Haze			%	64

EP322M Surface and roughness image



The above values are our lab data only for customer reference and should not be construed as product specifications. These values may shift as additional data are accumulated.

High impact and low sealing temp. BOPP and CPP film

Hifax EP110J

Benefits

- Excellent impact strength
- Low SIT with stronger seal strength
- Low flexural modulus for softness

Typical applications

- Battery cell pouch
- Retort pouch and protective film
- Sealable BOPP film

Properties		Test method (ASTM)	Unit	Hifax EP110J
MFR	2.16kg/230°C	D1238L	g/10min	3
Tensile strength	@Yield	D638	kg/cm ²	180
Flexural modulus		D790	kg/cm ²	6,500
IZOD strength	@23°C	D256	kg cm/cm	NB
	@-20°C			6.0
HDT		D648	°C	90

Sealing test condition

Seal bar : 10mm*25mm.

Sealing time : 0.5 sec

Sealing pressure : 2kgf/cm²

Peeling speed : 200mm/min

Temperature	Hifax EP110J	Conventional HeCo PP
152°C	127	-
154°C	299	170
156°C	384	225
158°C	533	586

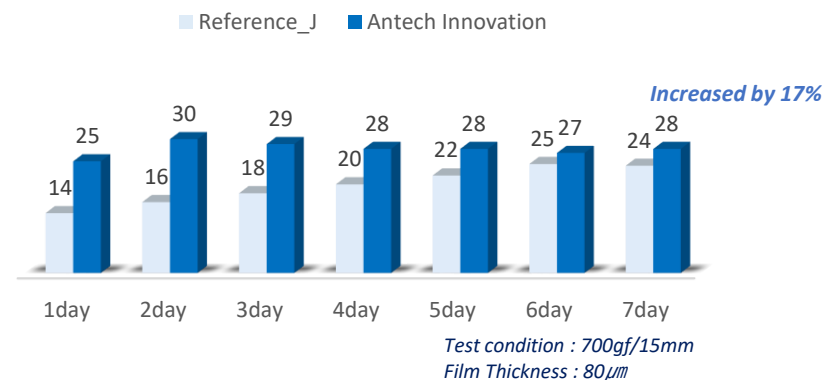
The above values are our lab data only for customer reference and should not be construed as product specifications. These values may shift as additional data are accumulated.

Case study

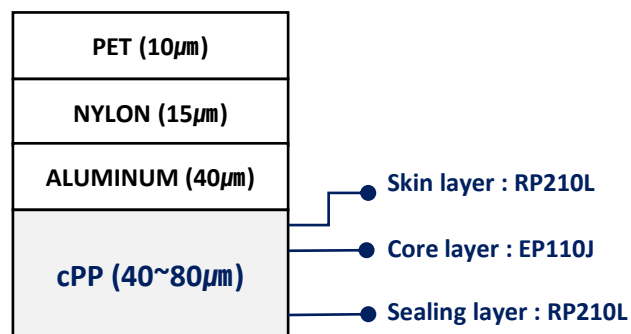
Battery cell pouch application



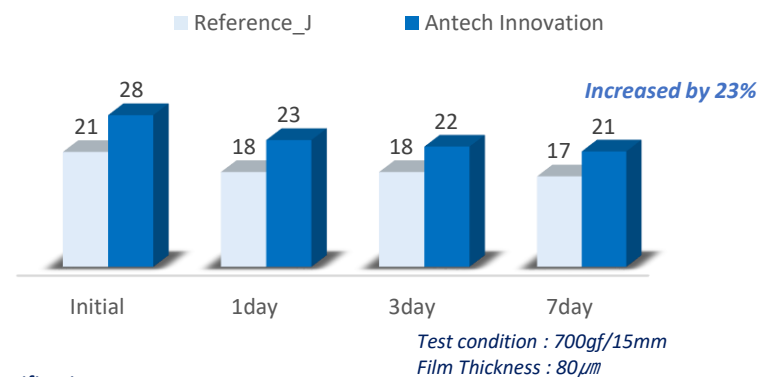
Sealing strength of Aluminum and CPP film



Simplified layer structure of battery cell pouch film



Electrolytic solution adhesion strength



The above values are our lab data only for customer reference and should not be construed as product specifications.
These values may shift slightly as additional data are accumulated.

CPP Film

Moplen HP512M / HP513M

Benefits

- Good stiffness
- Good discoloration resistance
- Low level of fish-eye

Typical applications

- Food packaging
- Industrial packaging

Properties		Test method (ASTM)	Unit	Moplen HP512M	Moplen HP513M
MFR	2.16kg/230°C	D1238L	g/10min	8	8
Tensile strength	@Yield	D638	kg/cm ²	350	360
Flexural modulus		D790	kg/cm ²	15,000	16,000
IZOD strength	@23°C	D256	kg cm/cm	3	3
Additive				Slip agents	-
Typical applications				General	Metallization



The above values are our lab data only for customer reference and should not be construed as product specifications. These values may shift as additional data are accumulated.

CPP Film

Moplen EP310J HP / EP310J

Benefits

- Lower gels
- Better gloss & clarity
- Good puncture & tear resistance
- Good processability
- Higher impact strength
- Non phthalate chemical

Typical applications

- CPP film for retort pouch
- Food packaging
- CPP, Blown & BOPP film

Properties		Test method (ASTM)	Unit	Moplen EP310J HP	Moplen EP310J
MFR	2.16kg/230°C	D1238L	g/10min	3	5
Tensile strength	@Yield	D638	kg/cm ²	320	290
Flexural modulus		D790	kg/cm ²	14,000	13,000
IZOD strength	@23°C	D256	kg cm/cm	NB	20
Gloss		D523	%	90	95



- a) The above values are our lab data only for customer reference and should not be construed as product specifications.
b) These values may shift slightly as additional data are accumulated.

CPP Film

Metocene HM2089

Benefits

- High transparency and gloss
- High purity
- Low volatile & clean running
- Long dyne retention time

Typical applications

- Protective CPP film
- Ter PP replacement
- Metallization layer
- Lamination layer

Properties		Test method (ASTM)	Unit	Metocene HM2089
MFR	2.16kg/230°C	D1238L	g/10min	9
Tensile strength	@Yield	D638	kg/cm ²	350
Flexural modulus		D790	kg/cm ²	14,500
IZOD strength	@23°C	D256	kg cm/cm	2
HDT	4.6kg/cm2	D648	°C	154



The above values are our lab data only for customer reference and should not be construed as product specifications. These values may shift as additional data are accumulated.

Product Portfolio

Rigid packaging

Segment	Grade	MFR (dg/min)	FM (Kg/m2)	Impact (@23°C/-20°C)	Typical applications
Sheet, Thermoforming & Blow molding	<i>Moplen EP5078</i>	0.5	14,000	NB	Food packaging & tray, Cosmetic bottles, EBM bottles
	<i>Moplen EP5079</i>	0.5	15,000	NB	Food packaging & tray, Cosmetic bottles, EBM bottles
	<i>Moplen EP640E</i>	0.8	15,500	NB	Food tray, Sheet, thermoforming, EBM bottle
	<i>Moplen RP303G</i>	1.7	13,000	6	T/F sheet
	<i>Moplen RP440K</i>	4.5	12,500	5	Stationery sheet, Bundle package
	<i>Moplen HP647D</i>	0.5	18,500	6	Sheet, Thermal forming
	<i>Moplen HP522H</i>	2	15,500	5	General film, Metallization
Consumer & Houseware	<i>Clyrell RC5056</i>	10	14,000	5	ISBM, Houseware, Food container
	<i>Moplen RP348NK</i>	11	10,700	7	Houseware & Appliance
	<i>Moplen RP344NK</i>	13	12,000	5	Houseware & Appliance
	<i>Moplen RP344RK</i>	24	12,500	5	Houseware & Appliance
	<i>Moplen RP345RK</i>	24	12,500	5	Houseware & Appliance
	<i>Moplen RP348SK</i>	35	10,500	5	TWIM, Houseware & Appliance
	<i>Moplen RP348TK</i>	48	11,500	5	TWIM, Houseware & Appliance
	<i>Moplen RP5007K</i>	75	12,000	5	TWIM, Houseware & Appliance
TWIM	<i>Moplen HP480S</i>	40	15,000	2	TWIM
	<i>Moplen HP740T</i>	60	18,000	2	TWIM
	<i>Moplen EP548S</i>	44	16,800	5/3	TWIM, Container, Housewares, sports
	<i>Moplen EP547U</i>	70	13,000	8/5	TWIM, Food container, Appliance
	<i>Moplen EP557U</i>	70	13,000	8/5	TWIM, Food container, Appliance
	<i>Moplen EP540V</i>	110	13,500	4/3	TWIM, Food container, Appliance
	<i>Moplen EP541V</i>	110	13,500	4/3	TWIM, Food container, Appliance

The above values are our lab data only for customer reference and should not be construed as product specifications. These values may shift as additional data are accumulated.

Industrial sheet & Thermoforming

Moplen EP5078 / EP5079 / EP640E

Benefits

- Good stiffness
- High heat resistance
- Low level of gel/ fisheye
- Good cycle time
- Good impact resistance

Typical applications

- Sheet, thermoforming applications
- Extrusion blow molding applications

Properties		Test method (ASTM)	Unit	Moplen		
				EP5078	EP5079	EP640E
MFR	2.16kg/230°C	D1238L	g/10min	0.5	0.5	0.8
Elongation	@Yield	D638	%	11	11	12
Flexural modulus		D790	kg/cm ²	14000	15000	15500
IZOD strength	@23°C	D256	kg cm/cm	NB	NB	NB
	@-20°C			3	2.5	3
HDT		D648	°C	107	120	123



The above values are our lab data only for customer reference and should not be construed as product specifications. These values may shift as additional data are accumulated.

Random PP copolymer with Advanced Clarifiers

Clyrell RC5056

Benefits

- High heat resistance
- Good transparency
- Good balance of stiffness and impact

Typical applications

- IBM, ISBM, injection
- Baby bottles, food containers
- Sports drinking bottles

Properties		Test method (ASTM)	Unit	<i>Clyrell RC5056</i>
MFR	2.16kg/230°C	D1238L	g/10min	10
Elongation	@Yield	D638	%	10
Flexural modulus		D790	kg/cm ²	14,000
IZOD strength	@23°C	D256	kg cm/cm	5
HDT		D648	°C	100
Haze (1T)		D1003	%	5



The above values are our lab data only for customer reference and should not be construed as product specifications. These values may shift as additional data are accumulated.

Industrial Sheet & Thermoforming

Moplen HP647D / HP650D

Benefits

- Good process ability & productivity
- High stiffness
- Good heat resistance
- Good process ability

Typical applications

- Industrial sheet
- Thermoforming sheet
- Extrusion blow molding

Properties		Test method (ASTM)	Unit	Moplen	
				HP647D	HP650D
MFR	2.16kg/230°C	D1238L	g/10min	0.5	0.7
Elongation	@Yield	D638	%	8	9
Flexural modulus		D790	kg/cm ²	19,500	17,500
IZOD strength	@23°C	D256	kg cm/cm	6	5
HDT		D648	°C	120	120



The above values are our lab data only for customer reference and should not be construed as product specifications. These values may shift as additional data are accumulated.

Random PP copolymer

Moplen RP303G / RP440K

Benefits

- Good balance with stiffness and transparent
- Good processing ability for extrusion
- Good EBM processing
- Good chemical resistance

Typical applications

- Extrusion blow molding applications
- Detergent bottle/ Softener bottle
- Shampoo /Cosmetic bottle
- Sheet and TF application
- Food tray

Properties		Test method (ASTM)	Unit	Moplen	
				RP303G	RP440K
MFR	2.16kg/230°C	D1238L	g/10min	1.9	4.5
Elongation	@Break	D638	%	13	10
Flexural modulus		D790	kg/cm ²	13,500	14,500
IZOD strength	@23°C	D256	kg cm/cm	6	5
HDT		D648	°C	100	100



The above values are our lab data only for customer reference and should not be construed as product specifications. These values may shift as additional data are accumulated.

Thin wall injection molding

High flow PP portfolio

Benefits

- Optimized balance of stiffness and toughness
- High productivity, Short cycle time
- Low warpage

Typical applications

- TWIM (IML), IM
- Food packaging container
- Ice cream container (Lid & Body)



Properties		Test method (ASTM)	Unit	Moplen						
				HP480S	HP740T	EP548S	EP547U	EP557U	EP540V	EP541V
MFR	2.16kg/230°C	D1238L	g/10min	40	60	44	70	70	110	110
Elongation	@Yield	D638	%	10	10	4	5	5	4	4
Flexural modulus		D790	kg/cm ²	15,000	18,000	15,000	13,000	13,000	13,500	13,500
IZOD strength	@23°C	D256	kg.cm/cm	2	2	5	8	8	4	4
	@-20°C			-	-	3	5	5	3	3
HDT		D648	°C	110	125	125	120	120	125	125

The above values are our lab data only for customer reference and should not be construed as product specifications. These values may shift as additional data are accumulated.

Thank you for your attention

Disclaimer :

Before using a PolyMirae product, customers and other users should make their own independent determination that the product is suitable for the intended use. They should also ensure that they can use the PolyMirae product safely and legally. This document does not constitute a warranty, express or implied, including a warranty of merchantability or fitness for a particular purpose. In addition, no immunity under PolyMirae's or third parties' intellectual property rights shall be implied from this document. No one is authorized to make any warranties, issue any immunities or assume any liabilities on behalf of PolyMirae except in a writing signed by an authorized PolyMirae employee. Unless otherwise agreed in writing, the exclusive remedy for all claims is replacement of the product or refund of the purchase price at PolyMirae's option, and in no event shall PolyMirae be liable for special, consequential, incidental, punitive or exemplary damages.

MOPLEN, HIFAX, ADSTIF, CLYRELL, PURELL, STRETCHENE, METOCENE, PRISTENE, HOSTALEN PP are trademarks owned or used by the LyondellBasell group companies and they are used by PolyMirae under license.