



Ultimate 6040 Bakery Trolley

Full Size Trolley

Holds 18 each 6040 Sheet Pans

Half Size Trolley

Holds 9 each 6040 Sheet Pans

Features & Benefits

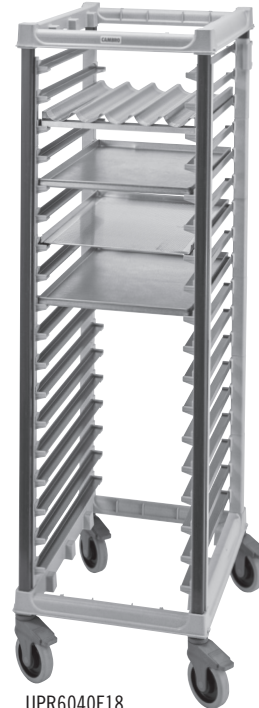
- Multi-purpose, end load trolley for holding, storing and transporting bulk food in 6040 Sheet Pans. Compact, slim design maximizes working space and storage space.
- Made from an extremely strong, revolutionary composite material with a smooth, easy to clean surface.
- Lifetime warranty against rust and corrosion.
- No metal parts, welds, screws, cross bars or metal casters than can break, bend, dent, rust or corrode.
- Moves easily between kitchen, freezer, cooler and/or off premise.
- Rails accept/hold hot pans from 200°C (392°F) oven.
- No marking or metal wipe from metal pans.
- Wide 7,6 cm (3") rail spacing offers greatest versatility and ease of use.
- Top frame features molded in supports to hold a single 6040 Sheet Pan to cover and protect contents below.
- Molded in slide rails for sheet pans (sheet pan sits on top of the rail) with molded-in 3 mm (0.012") pan stops on each rail end help keep pans on rails during light transport.
- 6040 Pan Holding Capacity:
Full Size: 18 each
Half Size: 9 each
- Weight bearing per rail set is 18 kg (40 lbs.).
Full Size unit weight bearing is 340 kg (750 lbs.).
Half Size unit weight bearing is 170 kg (375 kg).
- Four each heavy duty, 12,7 cm (5") premium plastic swivel casters all with total locking brake. Locks swivel and wheel. Non-marking thermoplastic rubber wheel. Rust and corrosion free.
- Easy to clean. Wipe down or pressure wash.
- Ships knockdown with casters and bottom frame wedges factory installed. Minimal assembly required.
- Components are easy to remove and replace if damaged, ensuring a lifetime of service.
- Optional accessories include Full Size Vinyl Cover and Pan Stops.
- Available in 1 color only – Speckled Gray (480).
- Patent pending.

Project _____

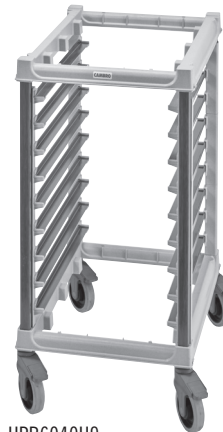
Item No. _____

Model No. _____

Quantity _____



UPR6040F18
Full Size Trolley



UPR6040H9
Half Size Trolley

Approvals



COMPONENT

Information and specifications are subject to change without notice. Please confirm at time of order.



www.cambro.com

CAMBRO U.S.A.

TEL: 1(714) 848-1555

FAX: 1(714) 230-4375

international@cambro.com

CAMBRO EUROPEAN LOGISTICS

TEL: (49) 7022 90 100 0

FAX: (49) 7022 90 100 19

cambroeuropa@cambro.com

CAMBRO UK

TEL: 0800 587 0057 Toll Free

FAX: 0845 280 3411

cambrouk@cambro.com

CAMBRO IRELAND

TEL: 1800 509 046 Toll Free

FAX: 01 633 55 76

cambroireland@cambro.com

© Copyright Cambro Manufacturing Company. Printed in the U.S.A. 06/23

Ultimate 6040 Bakery Trolley

Project _____

Item No. _____

Model No. _____

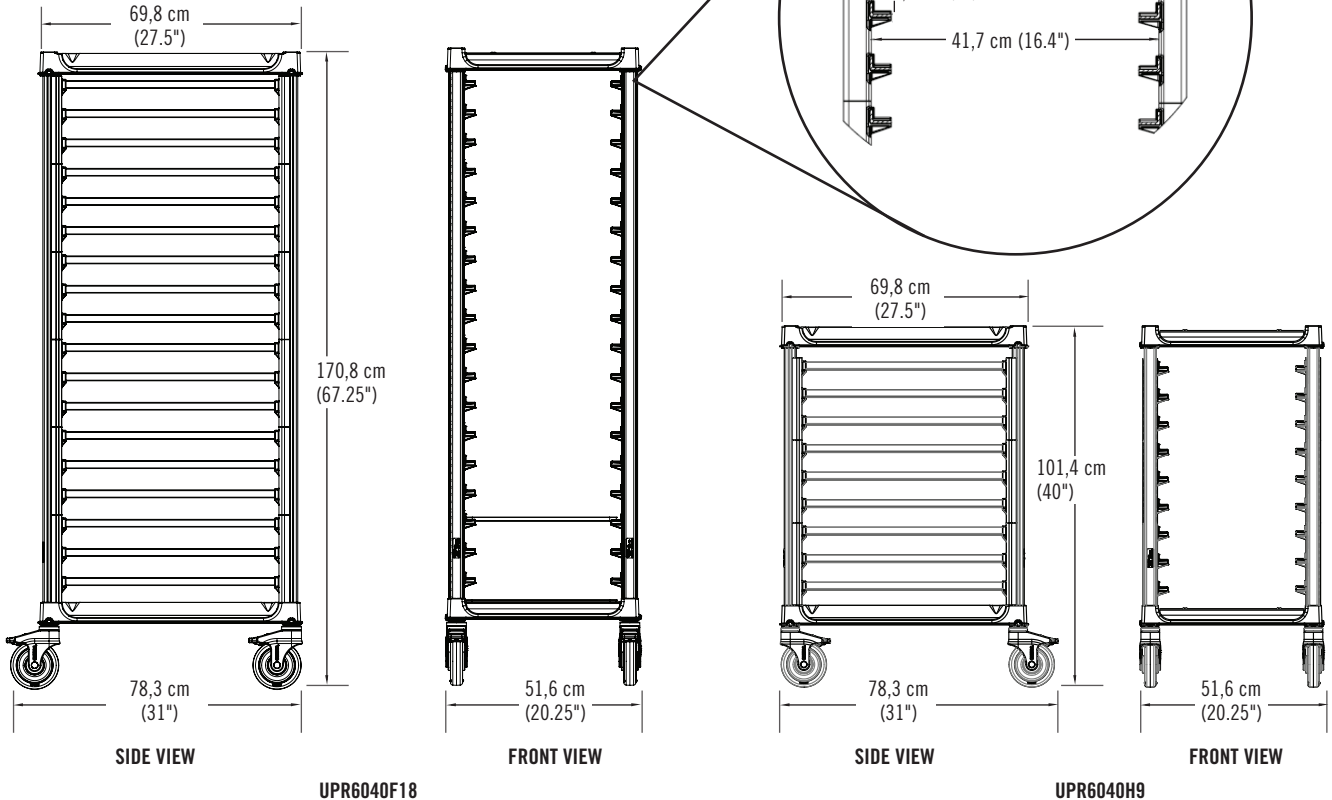
Quantity _____

Full Size Trolley

Holds 18 each 6040 Sheet Pans

Half Size Trolley

Holds 9 each 6040 Sheet Pans



Specifications

Dimension Tolerance: +/- 0,64 cm

Code	Description	Load Capacity	Dimensions D x W x H*	Unit Weight
UPR6040F18	Full Size Trolley	340 kg (750 lbs.)	78,3 x 51,6 x 170,8 cm (31" x 20.25" x 67.25")	21,3 kg (47 lbs.)
UPR6040H9	Half Size Trolley	170 kg (375 lbs.)	78,3 x 51,6 x 101,4 cm (31" x 20.25" x 40")	14 kg (31 lbs.)

* Includes 12,7 cm (5") Casters.

Optional Accessories

- Full Size Vinyl Cover UPR6040CVR
- Full Size Pan Stop UGNRPPSF
- Half Size Pan Stop UGNRPPSH

Standard Color

- Speckled Gray (480)

Architect Specs

Mobile Posts: Proprietary non-corrosive composite material. Post Connector Frames: Reinforced nylon. Side Rail Panels: Proprietary non-corrosive composite material and reinforced polypropylene. Post Connector Frame Wedges: Reinforced polypropylene. Casters: 12,7 cm (5"), plastic nylon frame, metal stem, non-marking thermoplastic wheel, with total locking brake. Units ship knockdown with casters and bottom post connector frame wedges factory assembled onto posts. Full Size unit holds up to 18 each 6040 Sheet Pans. Half Size unit holds up to 9 each 6040 Sheet Pans. Weight bearing per rail set is 18 kg (40 lbs.). Full Size unit weight bearing is 340 kg (750 lbs.). Half Size unit weight bearing is 170 kg (375 lbs.). Lifetime warranty against rust and corrosion. Unit color is Speckled Gray (480). Patent pending.

Approvals



Information and specifications are subject to change without notice. Please confirm at time of order.

CAMBRO

www.cambro.com

CAMBRO U.S.A.

TEL: 1(714) 848-1555

FAX: 1(714) 230-4375

international@cambro.com

CAMBRO EUROPEAN LOGISTICS

TEL: (49) 7022 90 100 0

FAX: (49) 7022 90 100 19

cambroeuropa@cambro.com

CAMBRO UK

TEL: 0800 587 0057 Toll Free

FAX: 0845 280 3411

cambrouk@cambro.com

CAMBRO IRELAND

TEL: 1800 509 046 Toll Free

FAX: 01 633 55 76

cambroireland@cambro.com

CSUPR60401

© Copyright Cambro Manufacturing Company. Printed in the U.S.A. 06/23

1052304