

NEW IDEAS  
NEW SOLUTIONS

# Camshelving® Universal Storage Rack

New!



An Innovative  
Way to

Customize

Maximize

Optimize

Your  
Storage  
Space

# CAMBRO®

NSF  
COMPONENTS

StoreSafe  
StaySafe

[www.cambro.com](http://www.cambro.com)

# Take your Storage Space to a Whole New Level.

Easily create individual storage sections with rail panels to hold pans, trays, boxes and much more.

Each rail set holds up to 13,6 kg (54,4 kg max per storage section).

Transform stacked pans, and gaps of wasted space, into easy-access, vertical product storage.



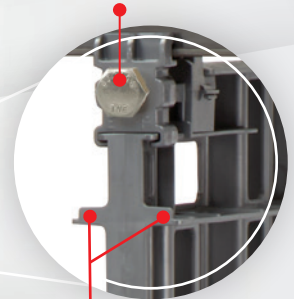
Create convenient "drawer" storage for frequently-accessed products/ingredients.



Temperature tolerance: -40°C to 177°C.

Seven rails per panel, double-sided, with 5 cm rail spacing.

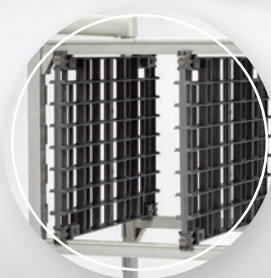
(304) Stainless Steel Hex Head Bolts.



Molded-in 0,64 cm Pan Stops, on the front and back of each rail.

5 Starter Kits, and 1 Add-On Kit, shown installed on a 600 mm x 1370 mm x 1830 mm Metric Premium Series® Unit.

Individual storage section.



-  Dishwasher Safe
-  Rust Free
-  Max Airflow
-  Weight Bearing
-  Temperature Tolerant



Compatible with Camshelving® Series: Metric Premium and Basics Plus.

# Transform YOUR Storage



Pizza Dough



Fresh Herbs



## Individual Storage Section Holding Capacity

Full-Size Food Pans with Flat Lids, 5 cm or 10 cm deep	<b>4 Pans</b>
Half-Size Food Boxes 7,6 cm or 15 cm deep (with lids) 7,6 cm deep (without lids)	<b>2 Boxes</b> <b>4 Boxes</b>
Sheet Pans/Trays, 45,7 cm x 66 cm	<b>7 Pans</b>
Pizza Dough Boxes*, 7,6 cm deep	<b>4 Boxes</b>

\*For complete details visit [cambro.com](http://cambro.com).

## Planning & Buying Guide

Scan below, or visit  
[www.cambro.com/UniversalGuide](http://www.cambro.com/UniversalGuide)  
to configure your storage space.



# Ideal for

## Locations

Kitchens  
Coolers  
Freezers  
Pastry Kitchen  
Warewashing  
Garde Mangers  
Dry Storage  
Housekeeping  
Banquets  
To Go/Delivery Stations

## Food Products

Fresh Herbs  
Pizza Dough Balls  
Peeled Garlic/Shallots  
Roasted Veggies  
Toppings  
Cooked Bacon  
Seasonal Veggies  
Chili Peppers

## Non-Food Products

Utensils  
Candles/Votives  
Housekeeping Supplies  
Banquet Décor Items  
Cake Decorations  
Pastry Bags & Tips  
Small Dishes



# Products

## For Metric Premium® Series

PRODUCT CODE	DESCRIPTION	FITS SHELVING
MPUNVR600	Starter Kit	600 mm Deep
MPUNVRA600	Add-On Kit	600 mm Deep

Case Pack: 1 Color: Brushed Graphite (580).

## For Basics Plus® Series

PRODUCT CODE	DESCRIPTION	FITS SHELVING
CBUNVR21	Starter Kit	530 mm Deep
CBUNVRA21	Add-On Kit	530 mm Deep
CBUNVR24	Starter Kit	600 mm Deep
CBUNVRA24	Add-On Kit	600 mm Deep

Case Pack: 1 Color: Brushed Graphite (580).

## Kit Contents

### Starter Kit

2 Rail Panels  
8 Panel Bracket Sets  
8 Traverse Brackets  
8 Stainless Steel (304)  
Hex Head Bolts

### Add-On Kit

1 Rail Panel  
4 Panel Bracket Sets  
4 Traverse Brackets  
4 Stainless Steel (304)  
Hex Head Bolts

PATENT PENDING



For more information about Cambro products visit [www.cambro.com](http://www.cambro.com) or contact your Distributor, Cambro Sales Representative or the Cambro Customer Service Department.



Access our Digital Catalog. Scan the QR code, or visit [cambro.com/catalog](http://cambro.com/catalog).

# CAMBRO

CAMBRO U.S.A.  
TEL: 1(714) 848-1555  
FAX: 1(714) 230-4375  
[international@cambro.com](mailto:international@cambro.com)

CAMBRO EUROPEAN LOGISTICS  
TEL: (49) 7022 90 100 0  
FAX: (49) 7022 90 100 19  
[cambroeuropa@cambro.com](mailto:cambroeuropa@cambro.com)

CAMBRO UK  
TEL: 0800 587 0057 Toll Free  
FAX: 0845 280 3411  
[cambrouk@cambro.com](mailto:cambrouk@cambro.com)

© Copyright Cambro Manufacturing Company.

LITX2213ENU

1082201