

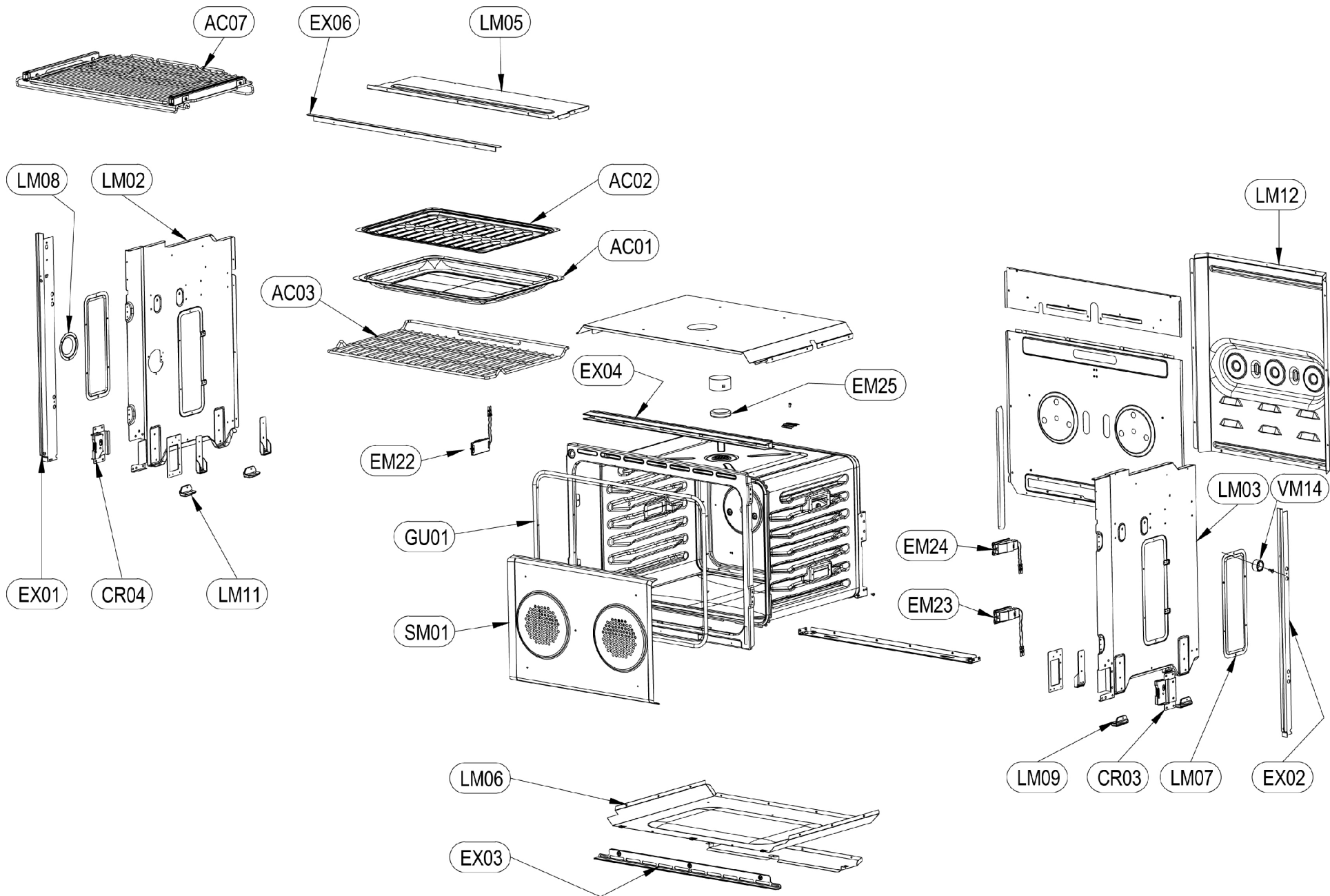


Single Wall Oven w/ Painted Door

KSO₃₀-XX
Parts List

Hestan Commercial Corporation
3375 E. La Palma Ave.
Anaheim, CA 92806
(888) 905-7463

RETAIN THIS FOR FUTURE REFERENCE



G97 HCB%

2.873.451A

[illegible]

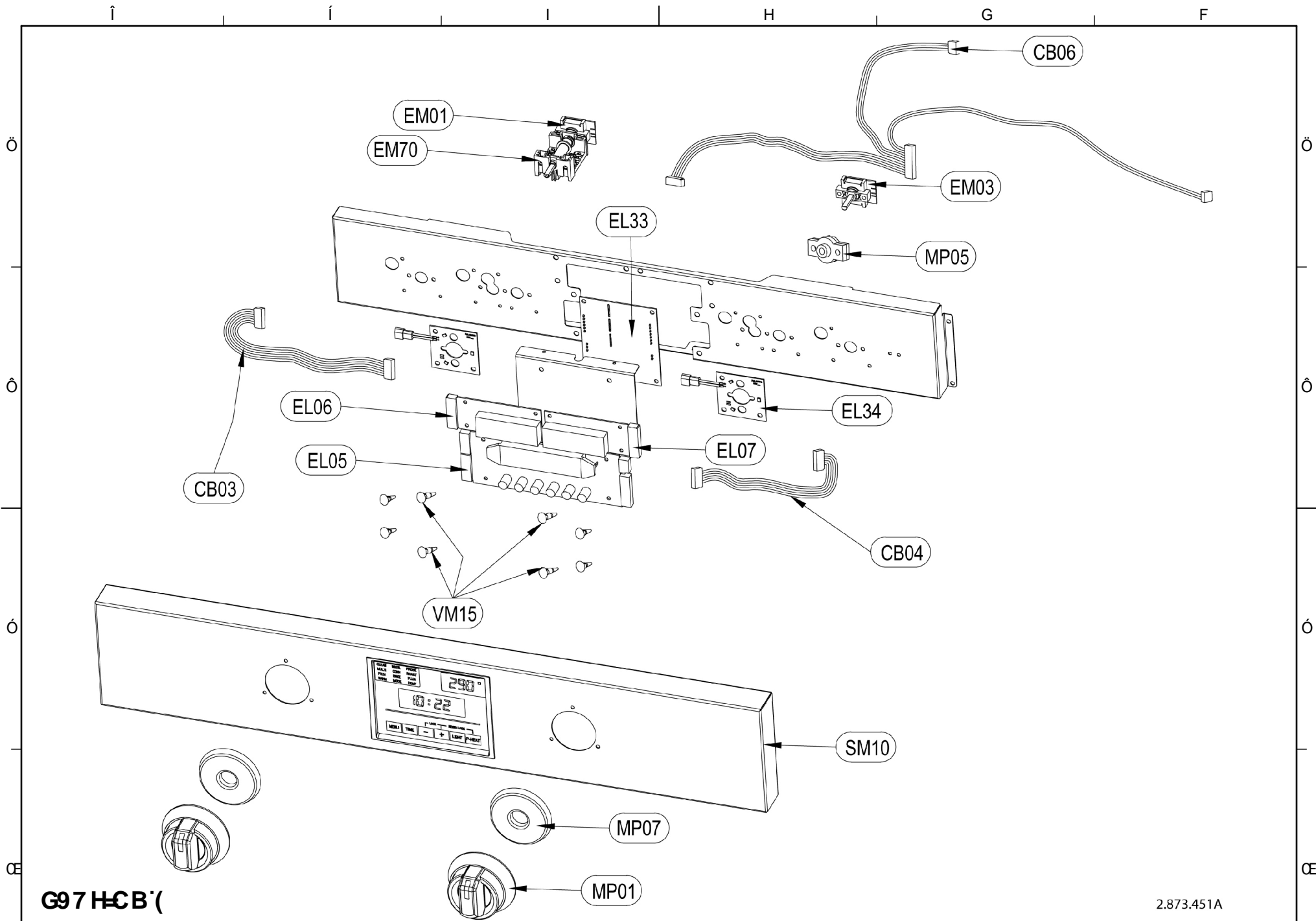
G9FJ=79žK5@@CJ9BžG=B; @
f? GC' \$!LLŁ

? GC' \$!LL!G9FJ≡ 9

6
 ὙΠΟΘΕΣΕΙΣ
 ΓΑΥ

This diagram shows an exploded view of a rectangular panel assembly. The main component is a large rectangular panel with a central rectangular cutout. Several circular holes are distributed across the panel's surface. To the left of the panel, there is a small rectangular component with a circular feature, likely a fastener or a sensor. To the right, there is a larger rectangular component with a circular feature, possibly a handle or a latch. The diagram uses dashed lines to indicate the assembly path and alignment of the components.

ÚPÒÒNÁPUE
HÁU QÁ



G97HCB'

2.873.451A

HESTAN

DFC DF-9 H5 FM
P U A D U V A G P A Q U O M T O B V T C B A O O U O U O M O O O A
U U U U O O F A B U O U D X C S A Y U V O T B U A U O B U T O V C O B A
C B Y A U T B Y Q P U W A P O A U Q V O A U O T Q U S P A U A
P A A Q I I C A A A Q I I I A B P A Q U O M T O B V A U A B Y
O U U D U A P E S S C O U V A U P O O N U T P A U Q V O A U O U V O E

G9 F J 7 9 Ž K 5 @ @ C J 9 B Ž G B ; @
f P G C ' \$! L L Ł

? G C ' \$! L L ! G 9 F J 7 9

6
I Á Œ Ā

SINGLE OVEN PARTS LIST

KSO30 / KSO30-XX

Dec. 03, 2018

SECT. #	BALLOON #	HESTAN P/N	DESCRIPTION	NOTES
1	AC01	025466	PAN, ENAMELED	
1	AC02	025467	ANTISPLASH SHIELD	
1	AC03	025468	RACK, OVEN, CHROME, HESTAN	
1	AC07	025469	RACK, TELESCOPIC, HESTAN	
1	CR03	025470	HINGE RECEIVER, RIGHT, 80K	
1	CR04	025471	HINGE RECEIVER, LEFT, 80K	
1	EM22	025472	LAMP HOLDER WITH BULB, 120VAC, 400mm	
1	EM23	025473	LAMP HOLDER WITH BULB, 120VAC, 540mm	
1	EM24	025393	LAMP HOLDER WITH BULB, 120VAC, 320mm	
1	EM25	025474	CATALYST 80K	
1	EX01	025546	OVEN SUPPORT, LEFT, 80K, MATTE BLACK	
1	EX02	025545	OVEN SUPPORT, RIGHT, 80K, MATTE BLACK	
1	EX03	025477	TRIM, LOWER, OVEN, 80K, MATTE BLACK	
1	EX04	025478	AIR DEFLECTOR, EXT, 80K, MATTE BLACK	
1	EX06	025544	SPACER, COOLING CHANNEL, 80K, MATTE BLACK	
1	GU01	025481	FRONT FRAME GASKET, 80K	
1	LM02	025549	LEFT SIDE COVER, SINGLE, 80K	
1	LM03	025548	RIGHT SIDE COVER, SINGLE, 80K	
1	LM05	025484	UPPER COVER, FRONT, 80K	
1	LM06	025485	BOTTOM COVER ASSEMBLY, OVEN 80K	
1	LM07	025486	COVER LATERAL OVEN, 80K	
1	LM08	025487	COVER MEAT PROBE, 80K	
1	LM09	025488	FOOT, RIGHT, OVEN 80K	
1	LM11	025489	FOOT, LEFT, OVEN 80K	
1	LM12	025490	REAR COVER, 80K	
1	SM01	025491	COVER, TWO FAN, ENAMELED	
1	VM14	025439	SPACER FOR CERAMIC COOKTOP 24/30/36"	
2	CB01	025551	SUPPLY WIRING w/ CONDUIT, SINGLE OVEN, 4-WIRE, USA	
2	EL08	025496	POWER BOARD, 80K HAWK3 UL	
2	EL10	025498	AUXILIARY BOARD, MEAT PROBE	
2	EL11	025499	TEMPERATURE PROBE, 80K OVEN	
2	EL12	025404	OVEN DOOR MICROSWITCH	
2	EL13	025500	PLUG, MEAT PROBE	
2	EL14	025501	MEAT PROBE	
2	EL15	025403	FLANGE FOR DOOR MICROSWITCH	
2	EM04	025502	TERMINAL BLOCK, 4P FV273	
2	EM05	025503	DELTA FILTER, 80K	
2	EM06	025504	COOLING FAN, TANGENTIAL, 80K, 120V	
2	EM07	025505	MOTOR, FAN, 80K, LEFT, 120V	
2	EM10	025506	HEATING ELEMENT AND REFLECTOR ASSEMBLY 3500W	
2	EM11	025507	BOTTOM HEATING ELEMENT, 3000W 240V	
2	EM12	025508	RING HEATING ELEMENT, 1300W 240V	
2	EM14	025509	THERMOSTAT, MANUAL RESET, NC155°C-16A BIPOLAR Ty62-R	
2	EM16	025510	THERMOSTAT, FIXED TEMP., 16A 70°C	
2	EM19	025511	MOTOR, FAN, 80K, RIGHT, 120V	
2	EM20	025512	FAN BLADE, SS, LEFT, 30"	
2	EM21	025513	FAN BLADE, SS, 30"	



DFC DF-9 H5 FM
P U A I O U A U G P A Q U O U T C E V I C E A O O U O U O N O O A
U U U U O O P A B U O U B X C E A Y U T B U A U A B U T Q V C O A
C E Y A U T B V Q P U W A P O Y U Q V C A U T Q U B P A U A
P * Q A Q I I C A A A Q I I I A A B P A Q U O U T C E V A U A B Y
O U U B U A P E S S O O U O V A P O O N U T A Y U Q V C A U O U O U E

0000000000

G9FJ=79ŽK5@@CJ9BžG-B; @
fP GC' \$!LLŁ

0000000000

?GC' \$!LL!G9FJ=79

0000000000

6

UPROVAJE

I AUQA

SECT. #	BALLOON #	HESTAN P/N	DESCRIPTION	NOTES
2	GU03	025514	RING ELEMENT SEAL, FIBER, 27/30"	
2	GU06	025515	GASKET, FIBER, CEILING, 80K	
2	LM01	025516	THERMOSTAT BRACKET	
2	LM04	025517	UPPER COVER, BACK, 80K	
2	VM03	025518	SPACER, ELECTRONIC CONTROL	
2	VM04	025519	SCREW, FAN MOTOR, 80K	
2	VM08	025520	SPACER, CERAMIC, MAIN POWER CONNECTOR	
3	AS01	025492	ASSEMBLY MOTOR LOCKING DOOR, 1µ 120V 80K UL	
3	AS02	025493	ASSEMBLY DOOR LOCKING, 3T, 80K	
4	CB03	025521	WIRING, OVEN, 30" 80K, DISPLAY BOARD-DISPLAY	
4	CB04	025522	WIRING, OVEN, 30" 80K, DISPLAY BOARD-DISPLAY	
4	CB06	025552	WIRING, OVEN, 30" 80K, DISPLAY	
4	EL05	025525	DISPLAY BOARD, CLOCK, WHITE, UL	
4	EL06	025526	DISPLAY BOARD, FUNCTION, WHITE	
4	EL07	025527	DISPLAY BOARD, TEMP., WHITE	
4	EL33	019678	LED DRIVER, HESTAN	
4	EL34	017612	LED MODULE, KNOB LIGHTING, HESTAN	
4	EM01	025530	SELECTOR, 0+8 POSITION, MULTIFUNCTION MODEL	
4	EM03	025531	SELECTOR, TEMPERATURE	
4	EM70	025532	COMMUTATOR, 8F+0 L20 7LA-8902XX, KNOB LIGHTING	
4	MP01	020663	KNOB, HESTAN	
4	MP05	025534	GUIDE, SELECTOR	
4	MP07	019744	LENS, DIFFUSER, HESTAN	
4	SM10	025550	CONTROL PANEL, FRONT, 80K, HESTAN	
4	VM15	025537	SPACER, DISPLAY	
5	AC31	001834	LOGO, HESTAN, 3.5 X2.5	
5	AS04	025538	OVEN DOOR BASE ASSEMBLY 80K, HESTAN	
5	CR01	025539	DOOR HINGE ASSEMBLY, 80K GAS/DF/IND.	
5	MN01	020670	HANDLE, WALL OVEN/WARMING DRAWER	
5	MN03	000463	ENDCAP, HANDLE, LH, SM	
5	MN04	000704	ENDCAP, HANDLE, RH, SM	
5	SM11	022925-XX	KIT, OVEN DOOR, LOWER, WALL OVEN (COLOR)	SPECIFY COLOR
		025553	WIRING, OVEN, 30" 80K	
		025547	WIRING, KNOB LIGHTING, 80K HESTAN	



DFC DF-9 H5 FM
P U A D E V A U G P Q U O M T C E V I C E A O O U O U O O O O A
U U U U O O F A B U O U B X C E A Y U T B U A U A U B U T Q V O O A
C B Y A U T B V Q P U W A P O V U Q V O A U O T Q U B P A U A
P * Q A Q I (C A A A Q I) I I I I B P Q A U O M T C E V A U A B Y
O U U B U A P E S S O O U V A P O O N U T P Y U Q V O A U O U O U E

0000000000

G9FJ=79žK5@@CJ9BžG-B; @
f! GC' \$!LLŁ

0000000000

?GC' \$!LL!G9FJ=79

0000000000

6

0000000000

IÁUQ