

BAX® System Q7 Version 4.22.1.12282

Features and Instructions

BAX System Q7 software release v4.22 contains several user interface features, new target options, and error logging improvements.

We strongly recommend that you always install the most recent version as soon as possible for optimal performance. Please read all instructions thoroughly and ensure all required prerequisites are confirmed prior to beginning installation of the software update.

If you currently have a WIN7 computer system, please contact diagnostics.support@hygiena.com or your local Hygiena® representative for upgrade support. **This release is NOT applicable for WIN7 systems.**

Software Updates and Features for Release v4.22.1.12282 for WIN10 ONLY

- New Assays with Result Interpretations:
 - foodproof® *Salmonella* Genus plus Enteritidis & Typhimurium Detection LyoKit
 - foodproof® *Salmonella* plus *Cronobacter* Detection LyoKit
 - foodproof® *Enterobacteriaceae* plus *Salmonella* Detection LyoKit
 - foodproof® *Vibrio* Detection LyoKit
 - foodproof® Yeast and Mold Quantification LyoKit
 - foodproof® *Aspergillus* Detection LyoKit
 - microproof® *Legionella* Quantification LyoKit
- SDS Equipment Driver Improvements
- Messages and Confidence Levels:
 - All **foodproof** and **microproof** assays

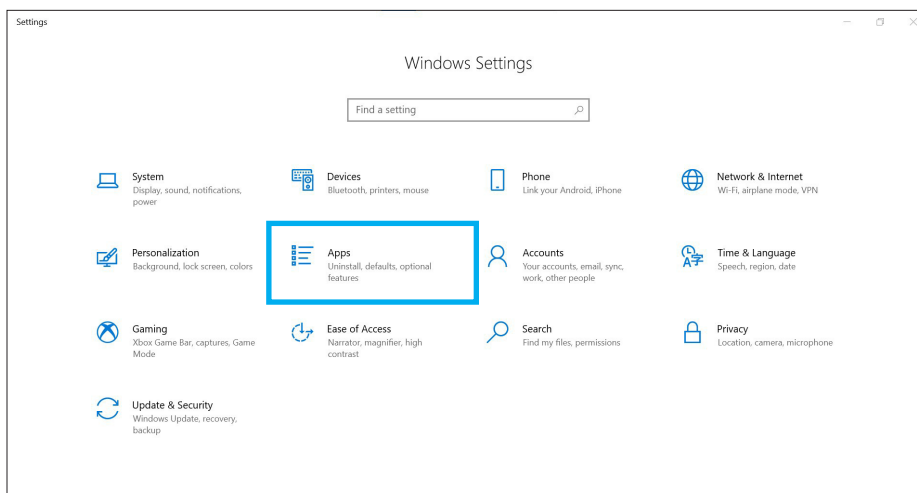
Software Upgrade Instructions:

1. Required Prerequisites:

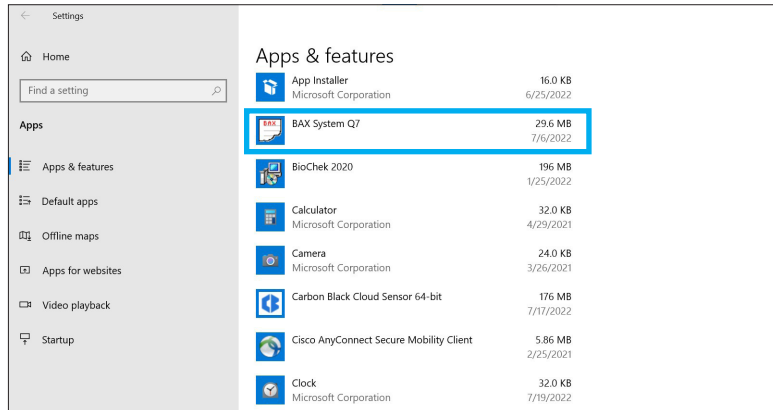
- **Regional Settings are in English**
- **Read/Write Permissions for the below file locations for all users**
 - ☐ C:\Program Files\MATLAB
 - ☐ C:\Program Files (x86)\BAX
 - ☐ C:\ProgramData\BAX Q7 System
 - All Power and Sleep Settings are set to Never.
- **Obtain HEX Calibration Kit from Hygiena**
 - This additional calibration plate is a standalone product and is not included with other calibration kits.
 - Please visit the [contact us](#) page for ordering and technical support.

2. Calibration storage and removal of current software:

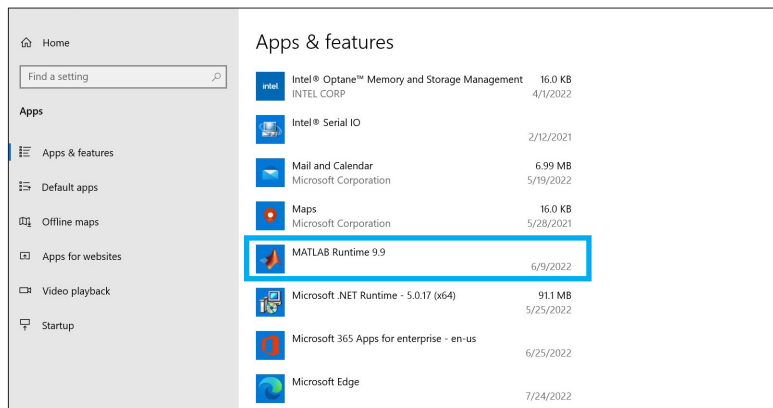
- **Back up the system's calibration file.**
 - ☐ Select Operations > BAX Maintenance > Export Calibration from the menu bar.
 - ☐ Navigate to a new folder in which to store the backup file and click Save.
 - ☐ Name the calibration file (example: Q7Cal_date.bqc).
- **Uninstall the previous version of the BAX Q7 application.**
 - ☐ Navigate to Windows Settings and select Apps.



- Click on BAX System Q7, select Uninstall, and agree (click Yes) on next window to initiate removal.



- If updating from 4.21, removal of MATLAB is not required. If updating from any previous versions, click on the MATLAB application, select Uninstall, and click Agree on the next window (this may take several minutes).



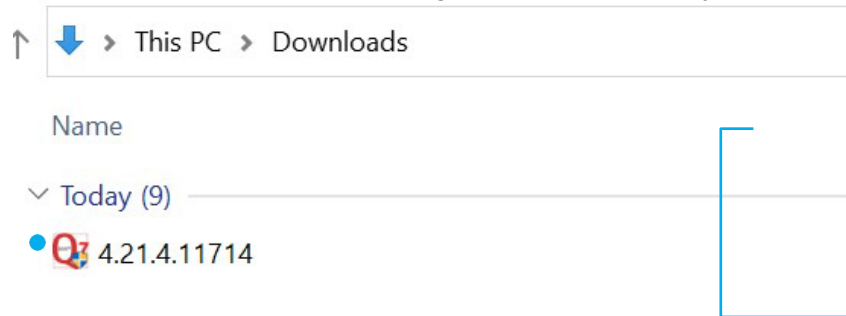
Restart computer BEFORE continuing to step 3.

Software Installation Instructions for Steps 3 and 4

3. Download 4.22.1.12282 software by clicking this [link](#) or the button from the BAX Q7 Page.

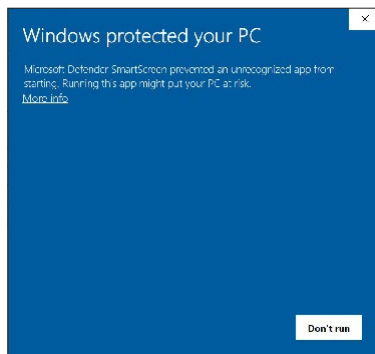
■ **Transfer download to a memory/USB stick if computer doesn't have internet access.**

- ☐ Click on the Q7 4.22.0.10335 icon and the program will automatically start execution of install.

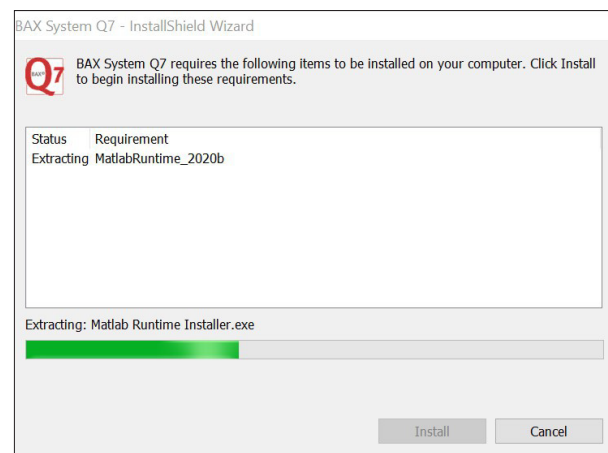
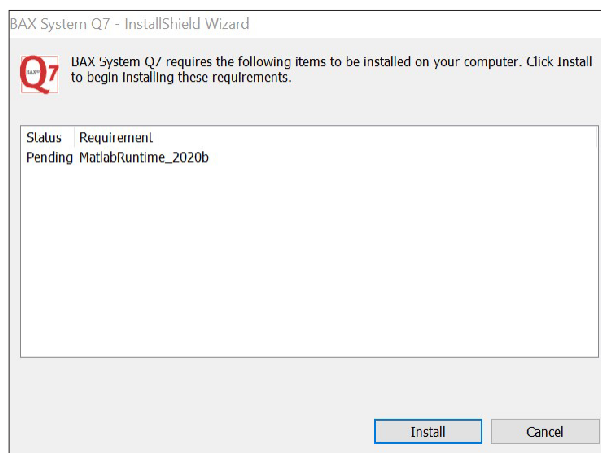


■ **A Windows protect screen may pop up. Select More Info, then select Run anyway.**

- ☐ On the next pop-up, select Yes to allow installation to begin.



4. MATLAB updates will install first. Follow prompts below and select the default responses:

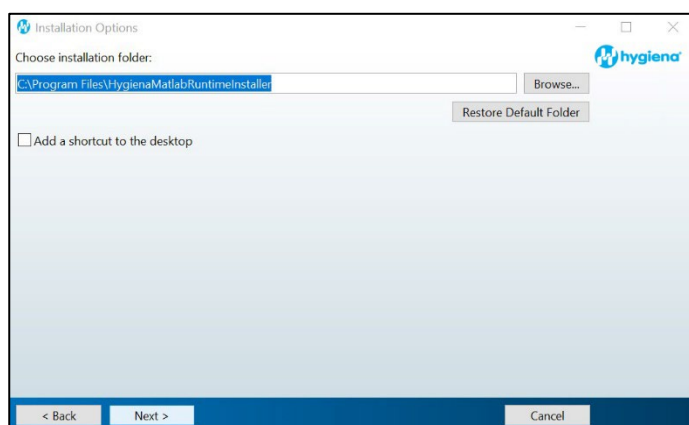
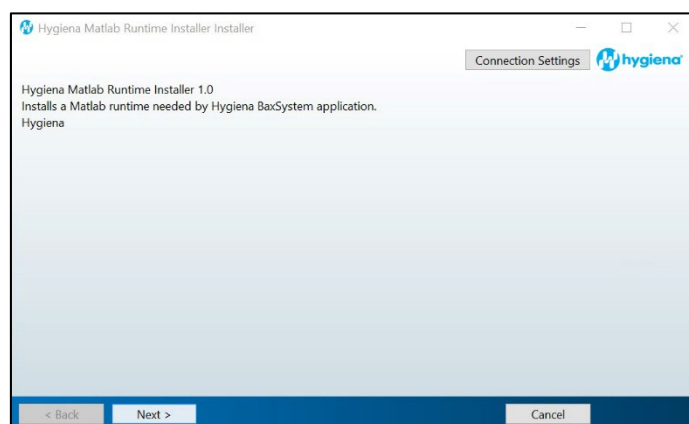


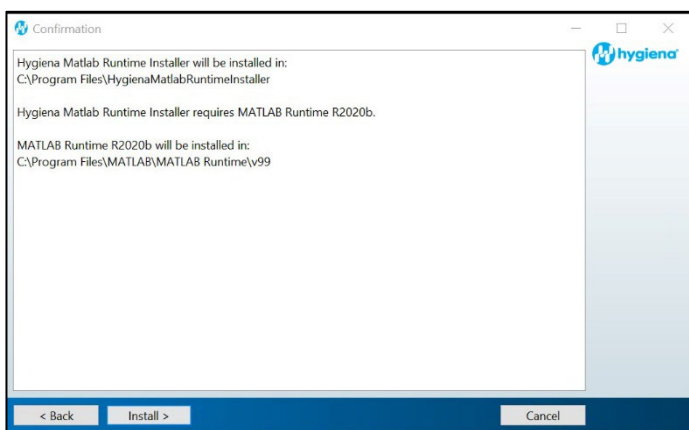
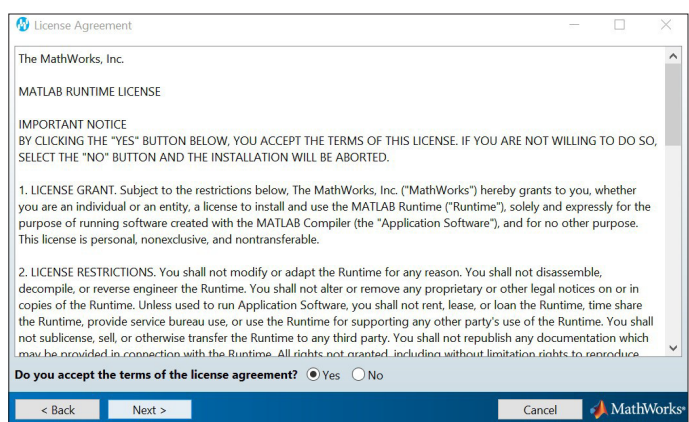
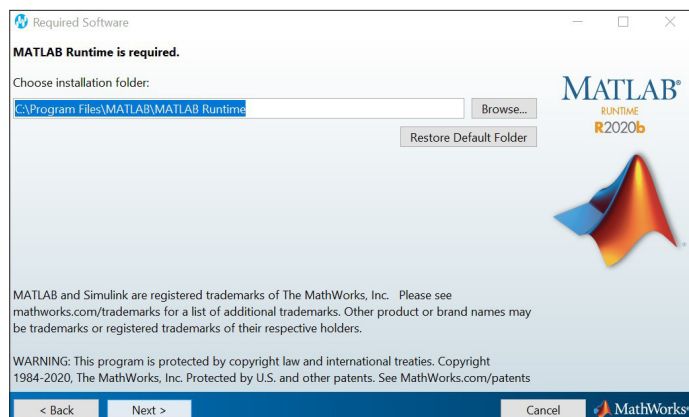
In case this install error occurs: VCRUNTIME140.dll was not found. (shown below).

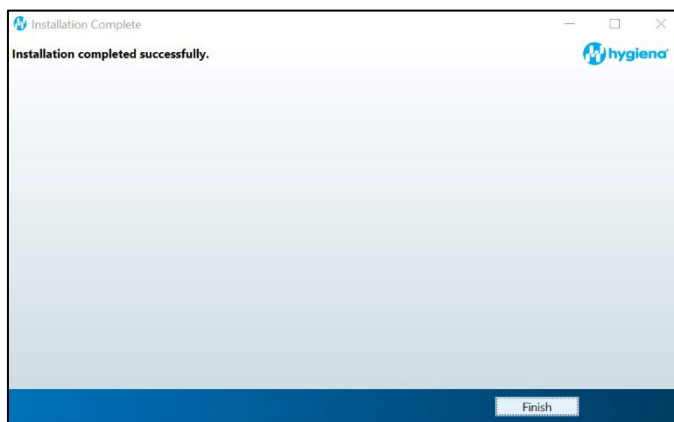
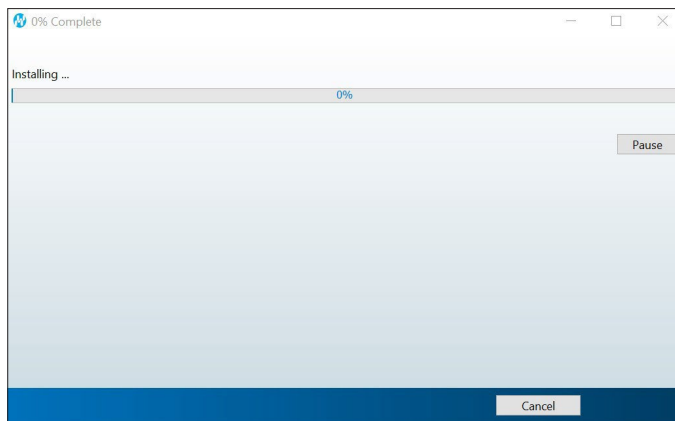
- Please download and install the patch: vc_redist.x64.exe from <https://www.microsoft.com/en-us/download/details.aspx?id=52685>. The installation will end when you click OK.



After installing this patch, MATLAB Installation is continued.

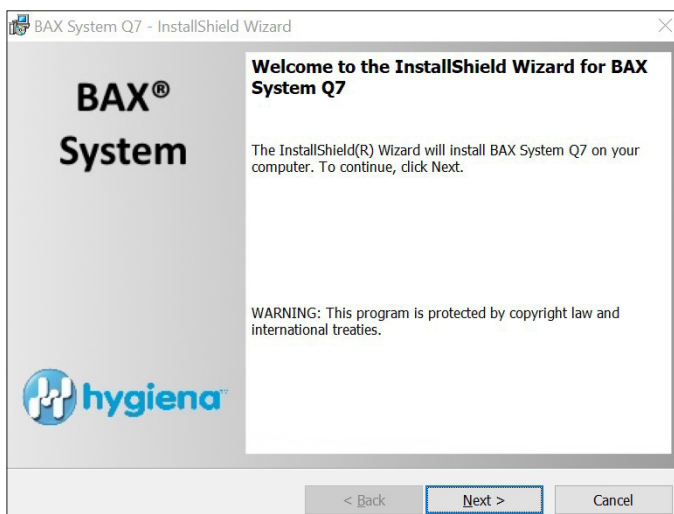






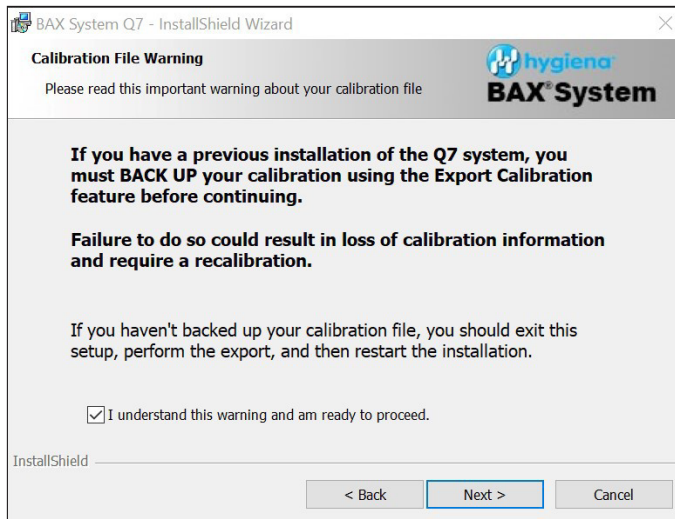
5. Following MATLAB installation, the BAX Q7 application installation will initiate. Read the prompts carefully. Choose the default responses.

- ☐ Welcome Window – click Next.



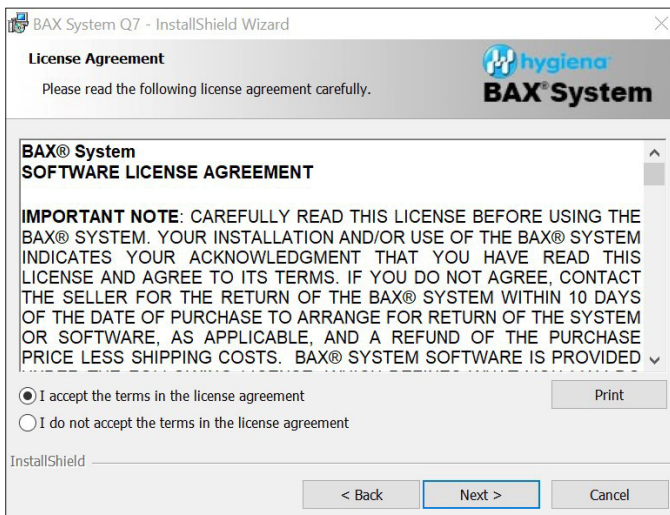
■ Calibration File Warning – ENSURE YOU HAVE BACKED UP THE CALIBRATION FILE.

☐ Check box and click Next.



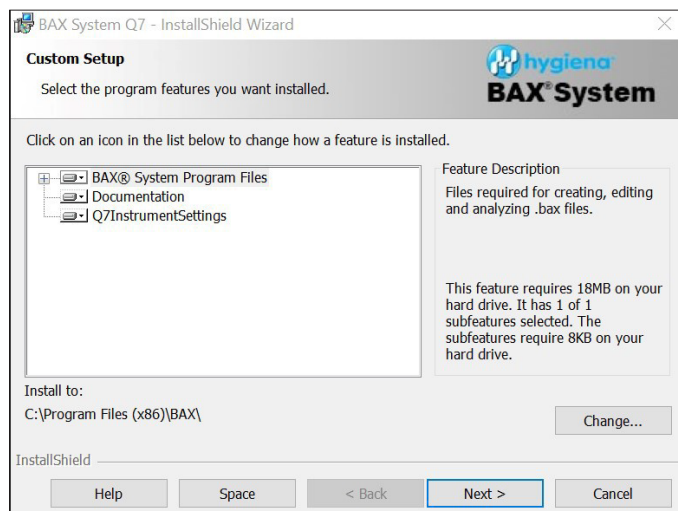
■ License Agreement.

☐ Check Accept Terms box and click Next.



■ Custom Setup.

☐ Click Next.



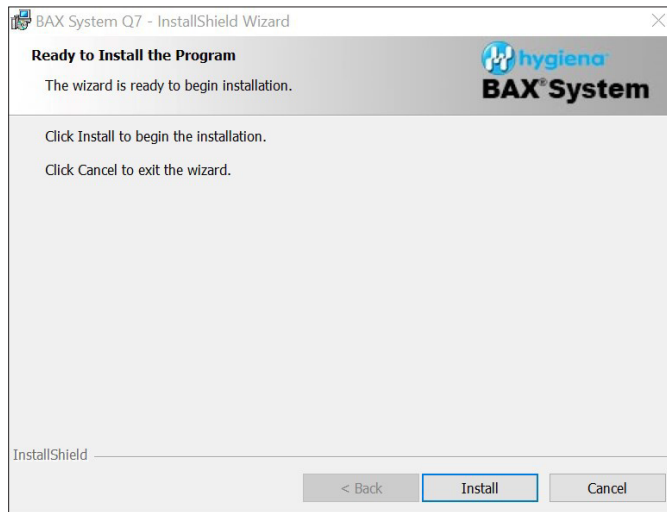
■ Password Protection.

☐ BAX default is disabled password protection. Choose an option for your lab, then click Next.



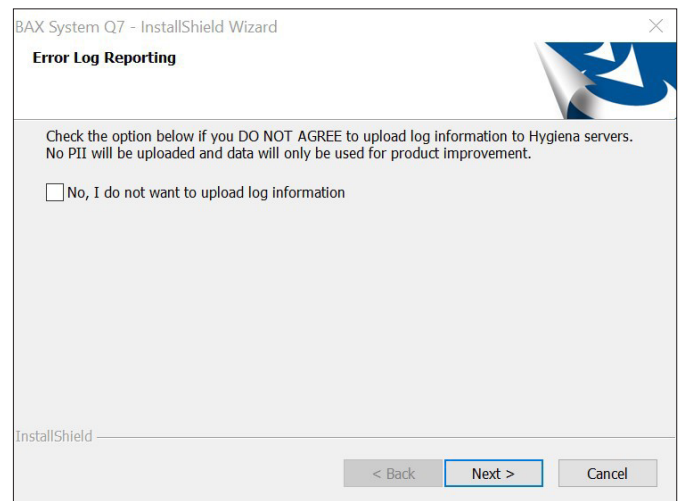
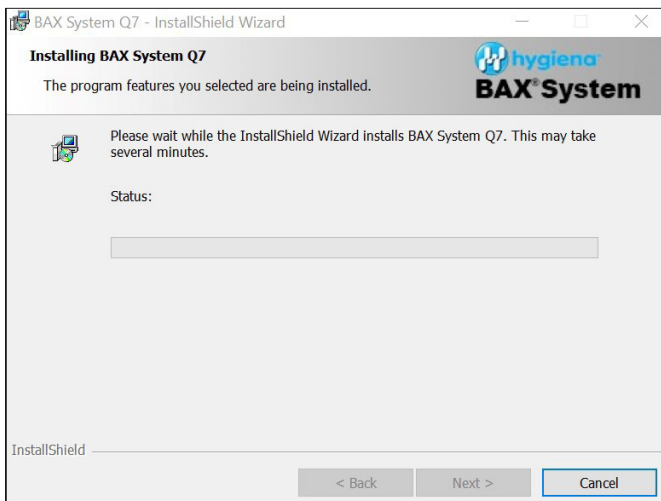
■ Ready to Install Program.

- ☐ Click Install.



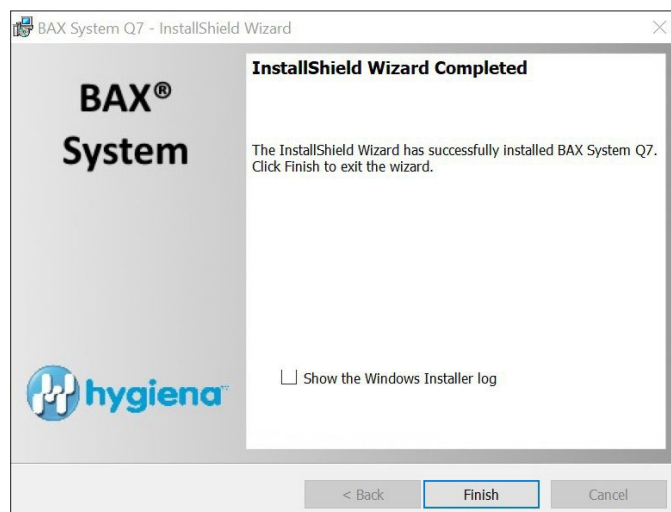
■ Installing BAX System Q7 Software.

- ☐ During installation, an Error Log Reporting window will pop up. We recommend NOT checking the box so the system can collect software and/or hardware errors in the Log Files to assist Diagnostics Support in troubleshooting. However, please review and decide what is appropriate for your lab.
- ☐ Select Next to complete the installation.

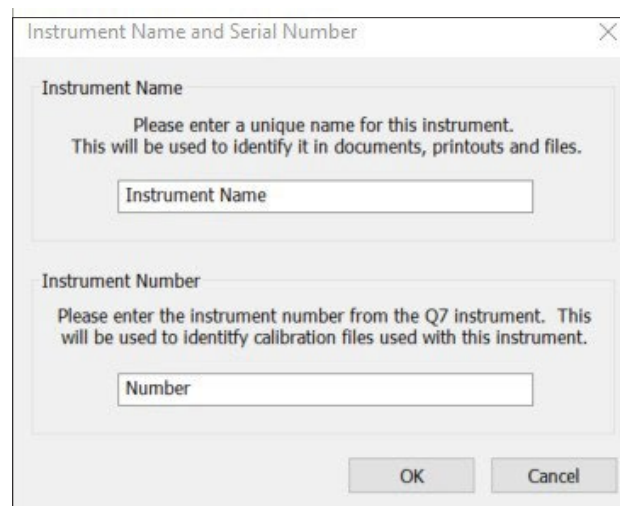
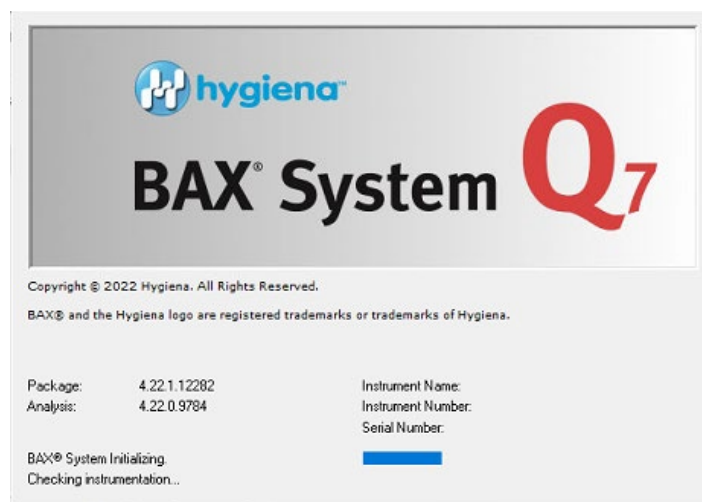


■ InstallShield Wizard Complete.

- ☐ Select Finish.



- ☐ Click on the desktop icon to initiate the program. The new open screen will have software version 4.22.1.12282.
- ☐ Enter Instrument Name and Serial Number.
 - This will appear on reports and should be utilized.

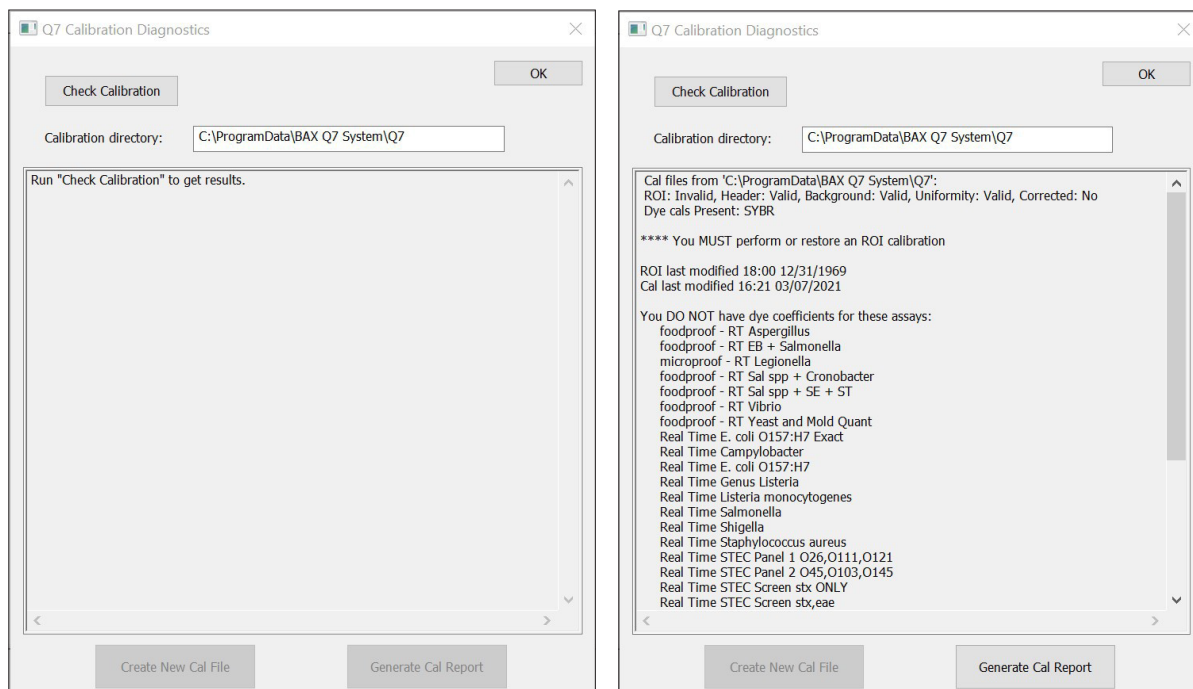


6. CHECK system's calibration (NEW FEATURE)

■ From the menu bar, select **Diagnostics > Calibration** to open the **Q7 Calibration Diagnostics** window

☐ Click the Check Calibration button to determine the status:

- If calibration is available, no further actions are needed.
- If calibration is **NOT** optimal or **NOT** found:
 - Import the backed-up calibration file by selecting **Operations > BAX Maintenance > Import Calibration** from the menu bar and selecting the backed-up calibration file from step 2.
- To utilize any foodproof assay, additional calibration using the HEX calibration kit must be performed. Please follow the onboard instructions in the BAX Software to perform calibration.



7. Ready to perform BAX System Analysis

■ Define proper targets that are used in your lab by selecting **View > Select Targets > then** in window, highlight targets being used and then use arrow buttons to move targets from **Define in System** to **Available for Selection** window.

