

Preventive Solutions for Brewery Contamination and Product Spoilage

Contamination from ineffective sanitation and biofilm residue on brewing equipment can lead to spoiled product or undesirable off-flavors and aromas. Hygiena's EnSURE® Touch monitoring system and easy-to-use swab tests detect adenosine triphosphate (ATP), the energy molecule of all living organisms, including bacteria, yeast, mold and residues troublesome to brewing operations. Ensuring brewing equipment and the brewery environment are clean and safe prevents product spoilage and improves overall quality. Hygiena's products also help to verify that cleaning procedures, CIP systems, sanitation chemicals and personnel are effectively removing contamination before production starts. With the EnSURE Touch monitoring system, all test results are recorded with SureTrend® software, which tracks and trends test results over time and generates automatic reports for management.

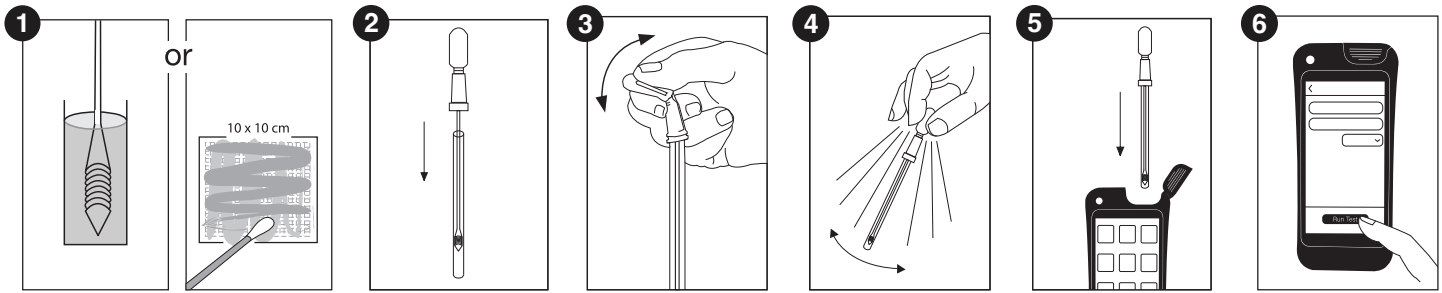


Suggested ATP Test Locations:

- | | | | |
|--|--|---|--|
| <ul style="list-style-type: none"> • Vats • Mash tuns • Brew kettles • Heat exchanger tubing | <ul style="list-style-type: none"> • Fermentation tanks • Gaskets/O-rings • Hoses • Valves | <ul style="list-style-type: none"> • Filters • Bottling lines • Fill nozzles • Kegs | <ul style="list-style-type: none"> • CIP system rinse water • Environmental surfaces |
|--|--|---|--|



Test Procedure:



See an instructional demo at [HygienaTV](#) or [HygienaTV](#)

Related Products:

EnSURE® Touch

EnSURE® Touch Monitoring System

EnSURE Touch measures and stores test results. When paired with SureTrend software, track, trend and analyze data for record-keeping, troubleshooting and reporting.

SuperSnap®

High sensitivity ATP detection for critical test locations such as fill nozzles, hoses and tanks, where poor cleaning has the most potential to cause contamination.



UltraSnap®

Standard ATP detection for all surfaces in the brewery production environment.



AquaSnap®

ATP detection for water samples such as run-off from CIP systems. A honey dipper tip collects a consistent amount of sample from test to test.



Swab Extenders

30-inch (76 cm) and 13-foot (4 m) swab extenders for reaching into tanks, vats or other hard-to-reach areas where cleanliness is critical.



Product No.	Description	Quantity
ETOUCH	EnSURE® Touch Monitoring System	1
US2020	SuperSnap® High Sensitivity ATP Test	100
SUS3000	UltraSnap® Surface ATP Swab	100
AQ100X	AquaSnap® Free Water ATP Test	100
AQ100FX	AquaSnap® Total Water ATP Test	100
EXT30	Swab Extenders (30 in.)	1
EXT13	Swab Extenders (13 ft.)	1