

BAX® System X5

PCR Assay for Genus *Listeria*

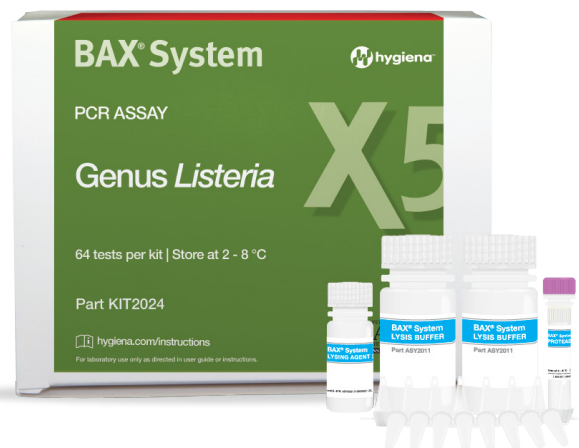
The BAX® System X5 offers the same fast, accurate, easy-to-use pathogen detection solution that customers have come to expect from the BAX® System method, but in a smaller lightweight construction. This PCR assay detects *Listeria* species for food products and environmental samples (excluding primary production samples), using automated sample preparation in the Hygiena™ Thermal Block and automated amplification and detection in the BAX® System X5 instrument.

Features & Benefits:

- Clear yes-or-no results in as little as 30 hours for select food and environmental samples
- Carefully designed primers target specific genetic sequences possessed only by the target organisms
- Minimal components and simplified workflows to maximize efficiency and ease-of-use
- Compatible with other BAX® System X5 assays for efficient processing
- Validated to perform as well or better than standard reference methods for listed product types
- Included internal controls to validate results even in absence of target

Validations, Certifications and Adoptions:

- **AOAC Research Institute**
Performance Tested MethodSM #030502
Validated on environmental sponges, environmental swabs, frankfurters, smoked salmon, spinach and other vegetables and cheese
- **Health Canada MFLP-15**
Detection of *Listeria* species from environmental surfaces using the BAX® System Genus *Listeria* Assay
- **BAX® System PCR Assay Genus *Listeria* 24E**
(Certificate number: QUA 18/6 - 07/08)
Detection of *Listeria* spp in food products and environmental samples (excluding samples from primary production)



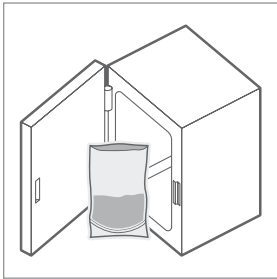
QUA 18/06 - 07/08
Alternative Analytical
Methods for Agribusiness
<http://nf-validation.afnor.org/en>



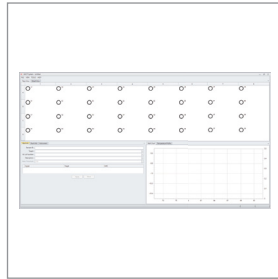
Health Canada MFLP-15

Code	Description	Quantity
KIT2024	BAX® System X5 PCR Assay for Genus <i>Listeria</i>	64 per kit

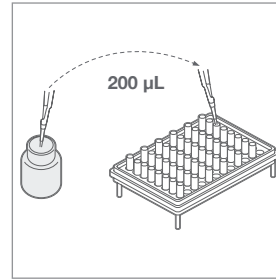
BAX® System Protocol



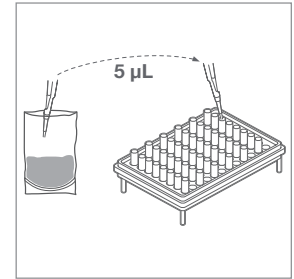
Enrich samples.



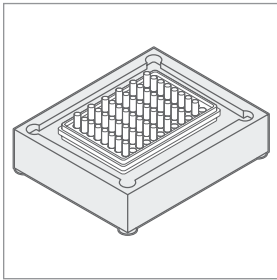
Create rack file and warm up cyclor.



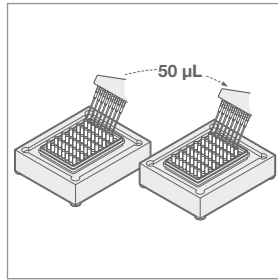
Mix protease with lysis buffer and lysing agent 2 and dispense 200 µL of solution into cluster tubes.



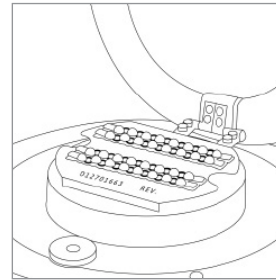
Transfer 5 µL sample enrichment to cluster tubes.



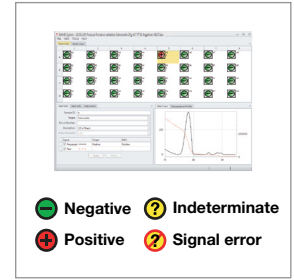
Place samples on automated thermal block for lysis and cooling.



Transfer 50 µL of lysed sample to PCR tubes in cooling block.



Place sealed PCR tubes in cyclor and immediately click "NEXT" to run program.



Review results.

- Negative ? Indeterminate
- + Positive ? Signal error

Related Products

BAX® System *Listeria* Enrichment Media

Provides nutrients and stable pH conditions to improve recovery of *Listeria* cells from sponges and swabs used to sample food contact surfaces and other environmental areas.

BAX® System X5 PCR Assay for *Salmonella*

Detects *Salmonella* species from standard enrichments of a variety of food and environmental samples with the same accurate and reliable DNA-based pathogen detection as the BAX® System Q7 with a smaller footprint.

BAX® System X5 PCR Assay for *E. coli* O157:H7

Detects *E. coli* O157:H7 from a wide variety of enriched samples (meats, vegetables, fruits and raw milk) with the same accurate and reliable DNA-based pathogen detection as the BAX® System Q7 with a smaller footprint.

Code	Description	Quantity
MED2002	BAX® System <i>Listeria</i> Media	2.5 kg tub
KIT2025	BAX® System X5 PCR Assay for <i>Salmonella</i>	64 per kit
KIT2022	BAX® System X5 PCR Assay for <i>E. coli</i> O157:H7	64 per kit