

# Allergen App Guide



# Introducing the new Allergen App for EnSURE® Touch

With the new Allergen App, you can get even more out of your EnSURE® Touch, plus sync data from multiple tests in your SureTrend®.

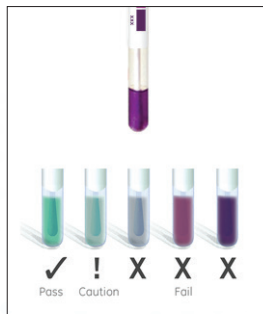
## Read Snap-Valve Test:



Sample Area

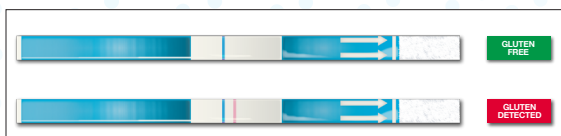


Snap & Wait  
for Color Change

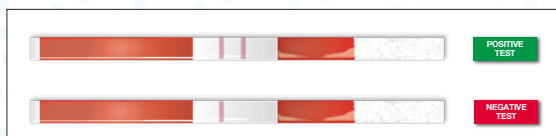


Read Color  
Results

## Read Lateral Flow Tests:



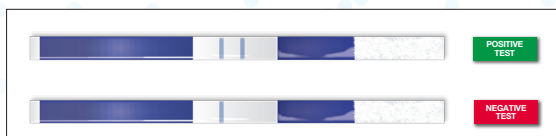
GlutenTox® Pro Sticks



AlerTox® Sticks



AllerFlow Cassettes



AlerTox® Sticks

## What to Do with the Results:



Enter Results  
(using ET Allergens App)



Report on  
SureTrend®



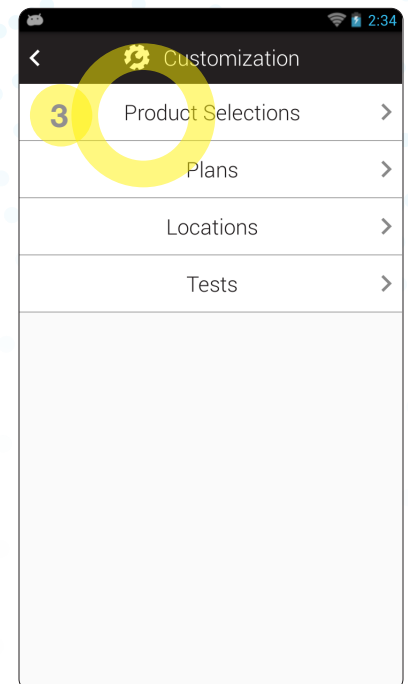
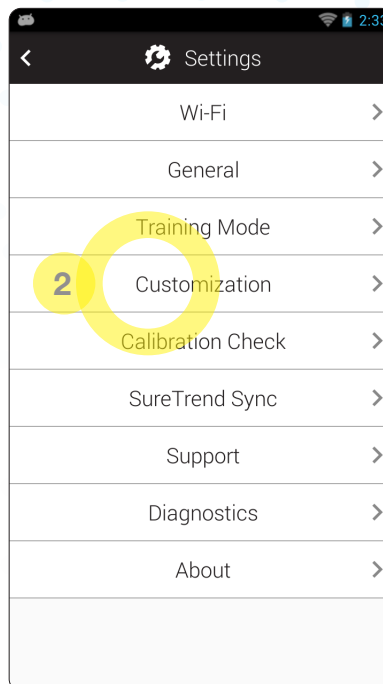
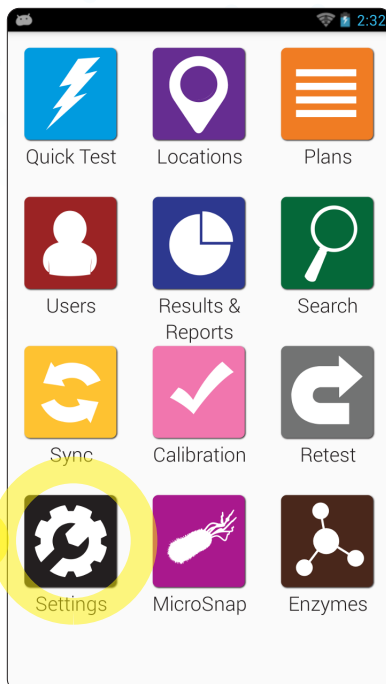
## Benefits:

- Data entered on EnSURE Touch automatically syncs to SureTrend. Upon entering the results in your EnSURE Touch instrument, the data automatically syncs to the cloud, creating visibility for your team members with access to SureTrend.
- Unify all your Allergen test kit data: AlerTox Sticks, AllerFlow Gluten, AllerSnap®, GlutenTox Pro, and PRO-Clean®, all in one spot.
- Export Allergen test results or build reports through SureTrend.
- Multiple-quality indicators in one instrument: ATP, Microorganisms, Enzymes, and Allergens.
- Track all of your results in one place with SureTrend.

## Instructions:

Before attempting to enable the Allergen app, double check that you've performed a software update to your EnSURE Touch while connected to WiFi.

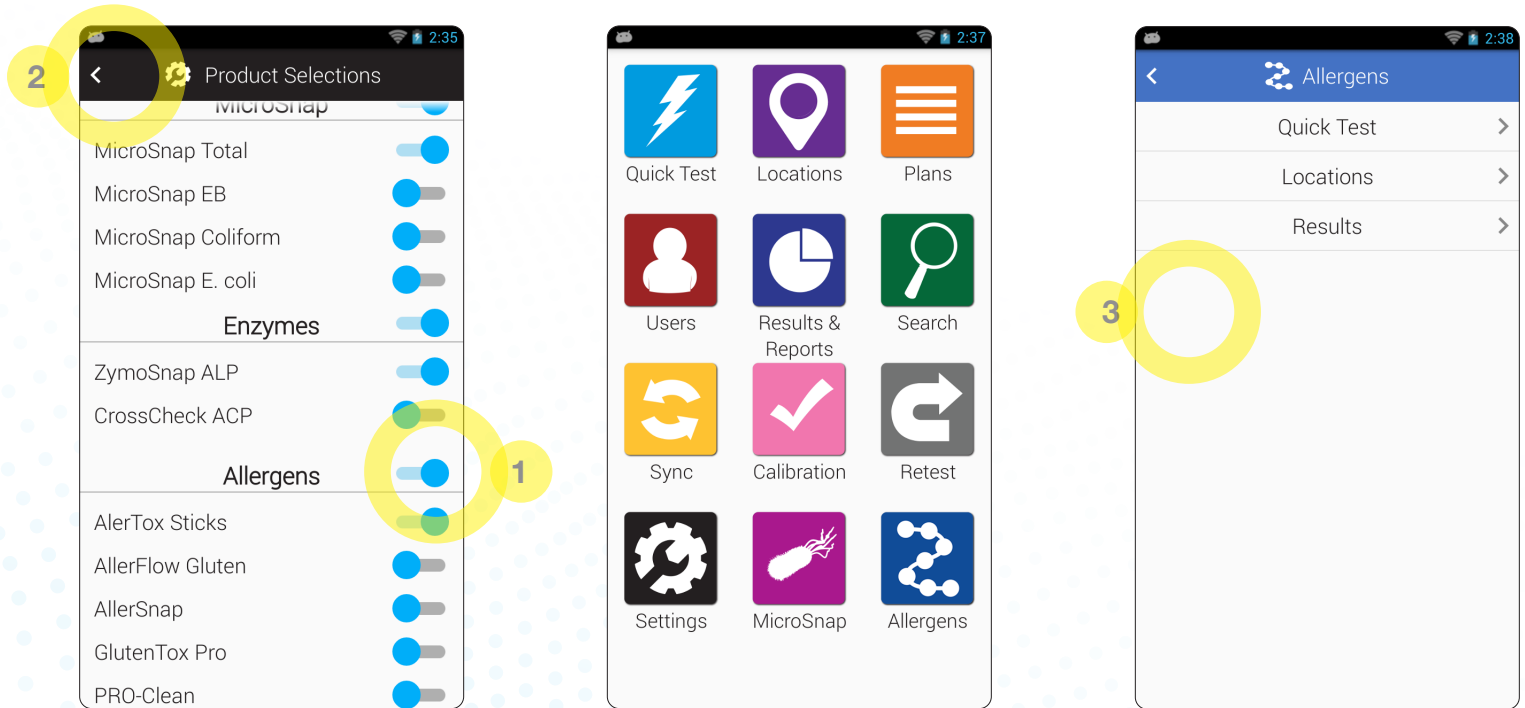
1) Touch the Settings icon on the Home Screen and 2) select Customization. 3) Choose Product Selections.



To activate the Allergens App, 1) turn on the appropriate toggle.

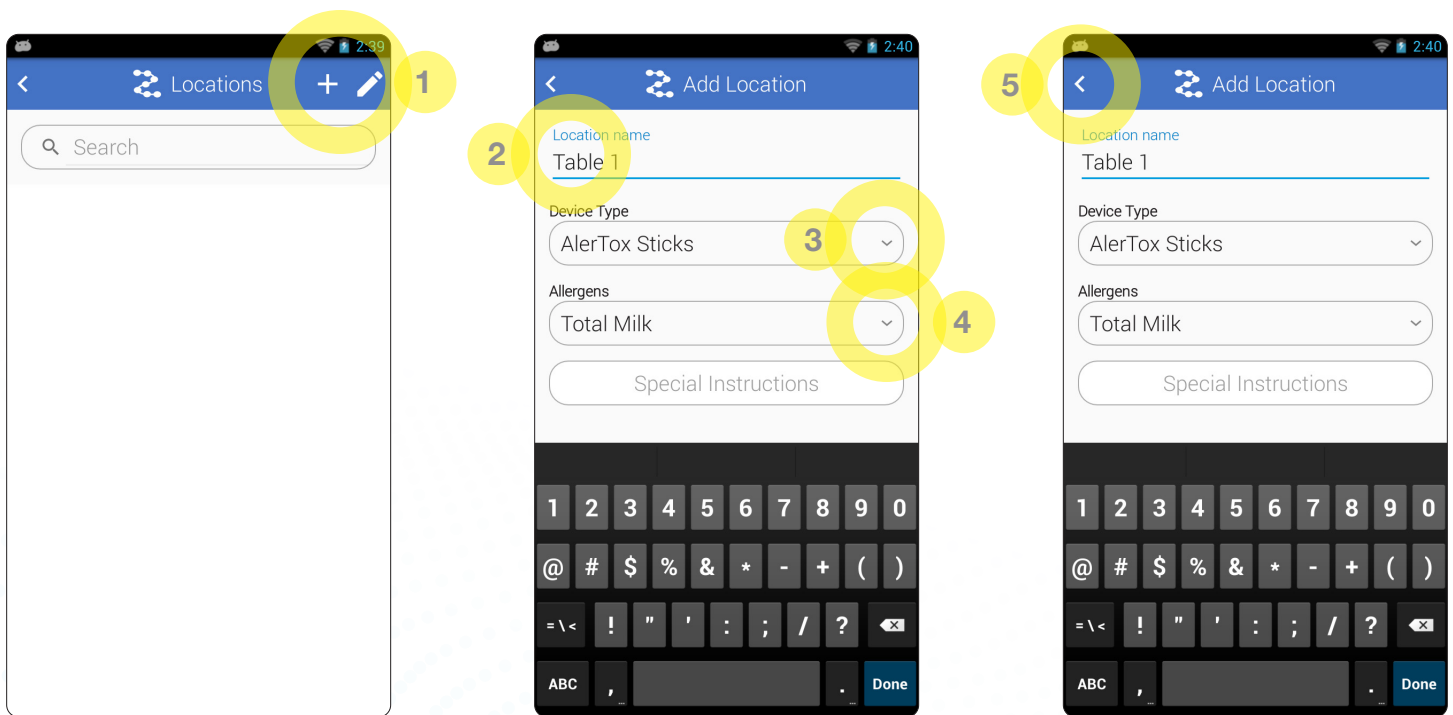
If you choose to, you can disable any allergen tests you do not use.

2) Return to the Home Screen where you will see the blue Allergens App.



3) Within the Allergens App there are two sections: Quick Test and Locations. Use Quick Test to perform tests on the fly for which you have not set up locations. Locations are the preprogrammed surfaces or products that are being tested.





1) To add a Location, click the + sign. 2) Name the Location you're testing, 3) choose the Device Type, and 4) define the Allergen you are testing for. 5) To save the Location, touch the back arrow in the top left corner.

Once a Location has been created, start testing by selecting the desired Location. The location will be pre-filled with the test device type and allergen you previously defined for it.

Location Test

Table 1

Device Type: AlerTox Sticks

Allergens: Total Milk

Select the result that matched your Device

1 Positive Negative Invalid

Personnel: Select personnel...

Room #:

Save 2

Location Test

Bin 1

Device Type: AllerSnap

Select the result that matched your Device

1 Pass Caution Fail

Personnel: Select personnel...

Room #:

Save 2

Location Test

Crate 1

Device Type: PRO-Clean

Select the result that matched your Device

1 Pass Caution Fail

Personnel: Select personnel...

Room #:

Save 2

For **AlerTox Sticks**, examine the test device and record the results on your EnSURE Touch by choosing 1) Positive, Negative, or Invalid. Define the Personnel who performed the test and fill in any personalized sections you've selected to report on. 2) Click Save and Done. When connected to WiFi, the data will sync to your SureTrend software.

Similarly for **AllerSnap**, examine the test device and record the results on your EnSURE Touch by choosing 1) Pass, Caution or Fail. Define the Personnel who performed the test and fill in any personalized sections you've selected to report on. 2) Click Save and Done. When connected to WiFi, the data will sync to your SureTrend software.

For **PRO-Clean**, examine the test device and record the results on your EnSURE Touch by choosing 1) Pass, Caution or Fail. Define the Personnel who performed the test and fill in any personalized sections you've selected to report on. 2) Click Save and Done. When connected to WiFi, the data will sync to your SureTrend software.

For additional questions about your EnSURE Touch or SureTrend, please visit **[www.hygienea.com](http://www.hygienea.com)**.



[hygiena.com](http://hygiena.com) | [help.hygiena.com](http://help.hygiena.com)

📍 941 Avenida Acaso, Camarillo, CA 93012 | ☎ 800.863.6842 US | ☎ 302.695.5300 International

Hygiena® and EnSURE® are registered trademarks of Hygiena® LLC.