

JetPulse® High-Speed Telemetry Service

FAST DELIVERY OF REAL-TIME DATA FOR DRILLING EFFICIENCY, OPTIMAL WELL PLACEMENT, AND EFFECTIVE DECISION MAKING

OVERVIEW

Today's challenging drilling environments such as deepwater or mature fields have significantly increased the need for real-time data to ensure accurate well placement and maximize drilling performance and efficiency. This increased need places higher demands on telemetry systems to transmit larger data sets and higher-resolution images without sacrificing accuracy or negatively affecting rate of penetration (ROP). The JetPulse® high-speed telemetry service meets these higher demands for data by providing consistent and configurable high-speed transmission of real-time drilling dynamics and formation evaluation measurements, enabling quicker decision making for accurate well placement, improved well control, and increased drilling efficiency. With more and faster data transmitted by the JetPulse service, you can reduce the flat time on the drilling curve while enhancing reservoir understanding to accurately place the wellbore for maximum reservoir contact.

THE RIGHT DATA AT THE RIGHT TIME TO MAKE THE RIGHT DECISIONS

The JetPulse service uses a mud-pulse telemetry system to send data to the surface by using pressure pulses in the drilling fluid. At surface, the pressure pulses measured by multiple pressure transducers are combined for maximum detection efficiency. The JetPulse service can transmit up to 18 bps of physical data, and, with the JetPack 3D™ data management service, the JetPulse service is able to deliver transmission rates of over 140 bps through compression. In addition, the JetPack 3D service allows you to configure which data you need most at the current location on the well plan. In collaboration with our customers, we can utilize the combination of the JetPulse and JetPack 3D services to provide consistent and configurable high-speed, real-time data that enable you to make timely decisions and maximize asset value.

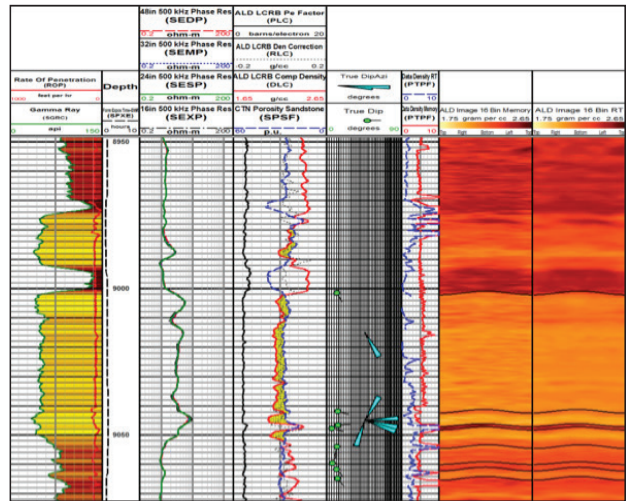
FEATURES

- » Encoding method delivers high and consistent data rates across a wide range of depths
- » Configurable data delivery enables you to have the Right Data at the Right Time to make the Right Decisions
- » Industry-leading lost circulation material (LCM) tolerance of any high-speed mud-pulse telemetry system

For more information, contact your local Halliburton representative, visit us on the web at www.halliburton.com/JetPulse, or email sperry@halliburton.com

Sales of Halliburton products and services will be in accord solely with the terms and conditions contained in the contract between Halliburton and the customer that is applicable to the sale.

H012439 1/18 © 2018 Halliburton. All Rights Reserved.



This log, with multiple data sets delivered by the JetPulse® high-speed telemetry service, enabled the operator to perform accurate dip picking for enhanced reservoir understanding.

BENEFITS

Drill to Produce

- » Place wells accurately with fast, high-quality geosteering images and measurements to maximize reservoir contact

Enhance Reservoir Understanding

- » Receive more information faster about your reservoir rock and fluid properties in real time to make optimal decisions on geosteering or where to take other logging-while-drilling (LWD) measurements, such as formation pressure and fluid sampling with the GeoTap® and GeoTap IDS sensors

Reduce Well Time

- » Maximize drilling efficiency and ROP with timely drilling dynamics data
- » Minimize drilling risks with real-time information of wellbore stability and pressure management