



CAMDEN OUTDOOR COLLECTION

LEEJOFA  
CARPET



CAMDEN OUTDOOR COLLECTION by LEE JOFA CARPET

Camden outdoor is an exclusive collection of beautiful **high performance** area rugs presented in a series of distinctive colors using **polypropylene yarns**. With colorfast and unsurpassed durability, these provide a valuable resource for all decorating solutions **both indoors and outdoors**.

Designs range from rich tone on tone herringbones, small scale geometrics to transitional plaids and stripes with colors such as natural, stone, aqua, indigo, peacock and spice; these rugs are stylish, **lustrous and extremely versatile**.

The option to **create your own size, shape and palette** can be effortlessly achieved through **53 “PP”** colors that support the expedited production.



SOUTCASTER  
ICE



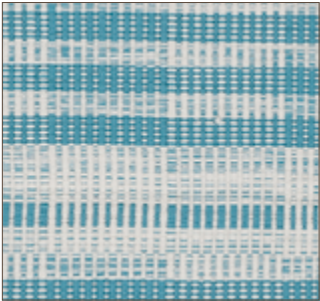
PELLMINSTER  
SNOW



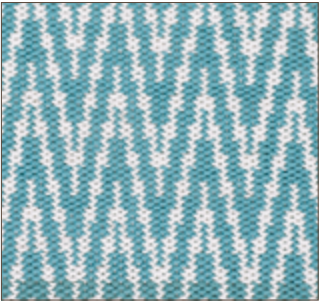
NORTCASTER  
STEEL



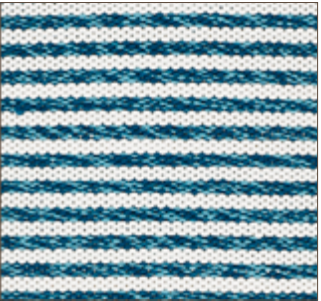
PELLMINSTER  
STERLING



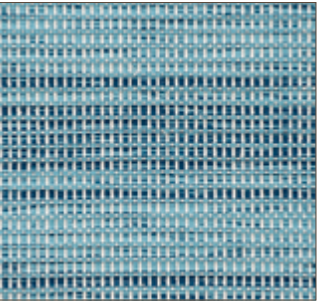
RANDWORTH  
TEAL



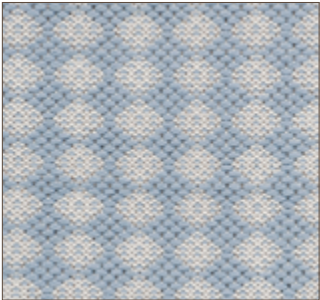
STITCHHEM  
LAGOON



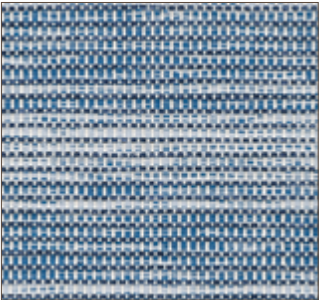
STAMBRIDGE STRIPE  
LAGOON



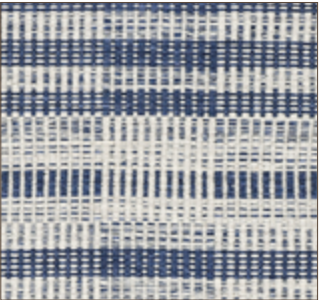
ATWEAVE  
LAGOON



PECKERICK  
CORNFLOWER



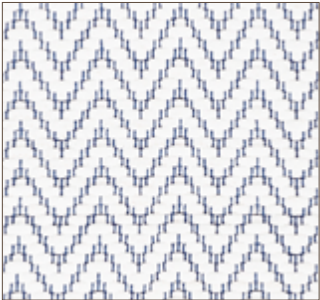
ATWEAVE  
BLUE BLAZE



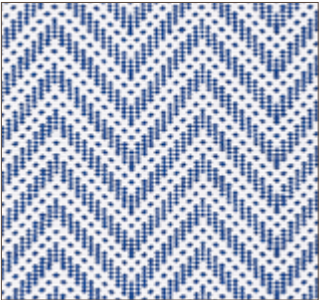
RANDWORTH  
SAPPHIRE



STAMBRIDGE STRIPE  
MARINA



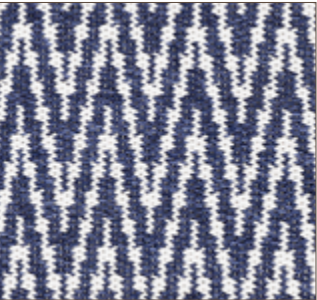
NORTCASTER  
MARINA



PELLMINSTER  
WATER



STAMBRIDGE STRIPE  
WATER



STITCHHEM  
OCEANA



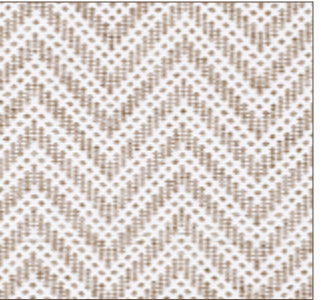
ATWEAVE  
PEARL



PAYMITH  
PEARL



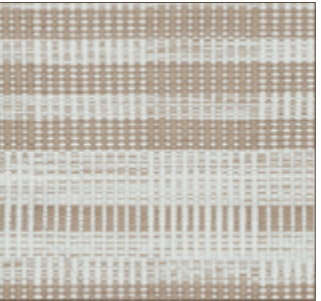
POOLBROOK  
HUSK



PELLMINSTER  
CAFE



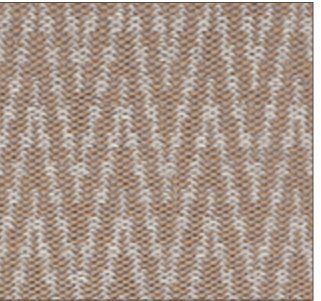
MACHESTER  
IVORY



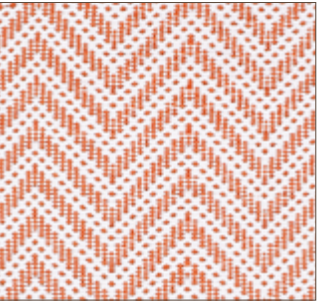
RANDWORTH  
CARAMEL



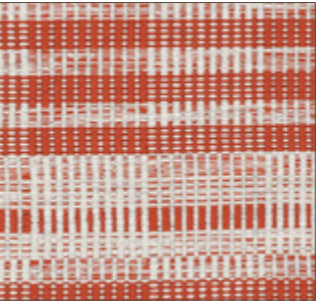
ATWEAVE  
CARAMEL



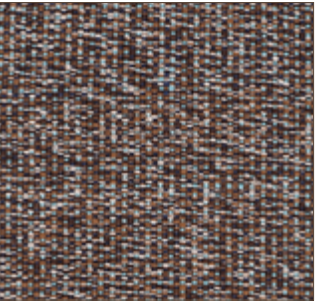
STITCHHEM  
CARAMEL



PELLMINSTER  
CORAL



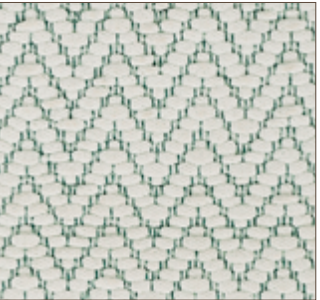
RANDWORTH  
TERRACOTTA



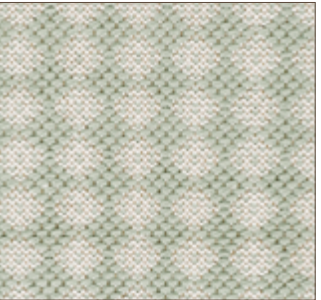
SLURSHIRE  
MEADOW



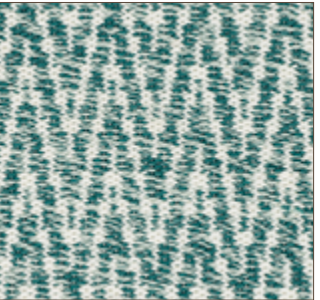
STAMBRIDGE STRIPE  
HARBOUR



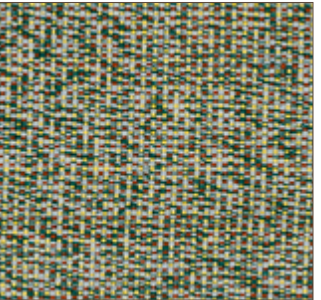
NORTCASTER  
FOREST SNOW



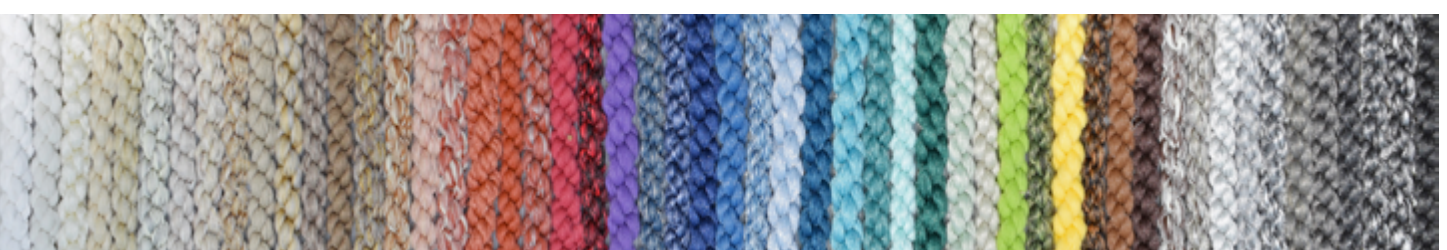
PECKERICK  
CELADON



STITCHHEM  
MEADOW



SLURSHIRE  
LAKESIDE



PP/MM-4  
PP/MM-9  
PP/MM-101  
PP/SL-11  
PP/SL-9  
PP/BL-1  
PP/SL-10  
PP/SL-7  
PP/SL-103  
PP/MM-8  
PP/BL-8  
PP/SL-8  
PP/MM-7  
PP/SL-17  
PP/BL-7  
PP/SL-6  
PP/BL-9  
PP/MM-11  
PP/MM-10  
PP/BL-10  
PP/TX-3  
PP/BL-5  
PP/TX-2  
PP/SL-14  
PP/BL-2  
PP/MM-13  
PP/MM-12  
PP/SL-15  
PP/MM-14  
PP/MM-15  
PP/MM-16  
PP/SL-13  
PP/SL-12  
PP/MM-17  
PP/MM-18  
PP/SL-4  
PP/TX-4  
PP/SL-16  
PP/TX-1  
PP/BL-4  
PP/MM-6  
PP/MM-5  
PP/BL-6  
PP/SL-101  
PP/MM-3  
PP/SL-3  
PP/SL-1  
PP/SL-5  
PP/MM-2  
PP/SL-2  
PP/SL-102  
PP/BL-3  
PP/MM-1





HAND WOVEN IN INDIA • 100% POLYPROPYLENE

### MADE TO ORDER

CHOOSE FROM 53 STANDARD COLORS

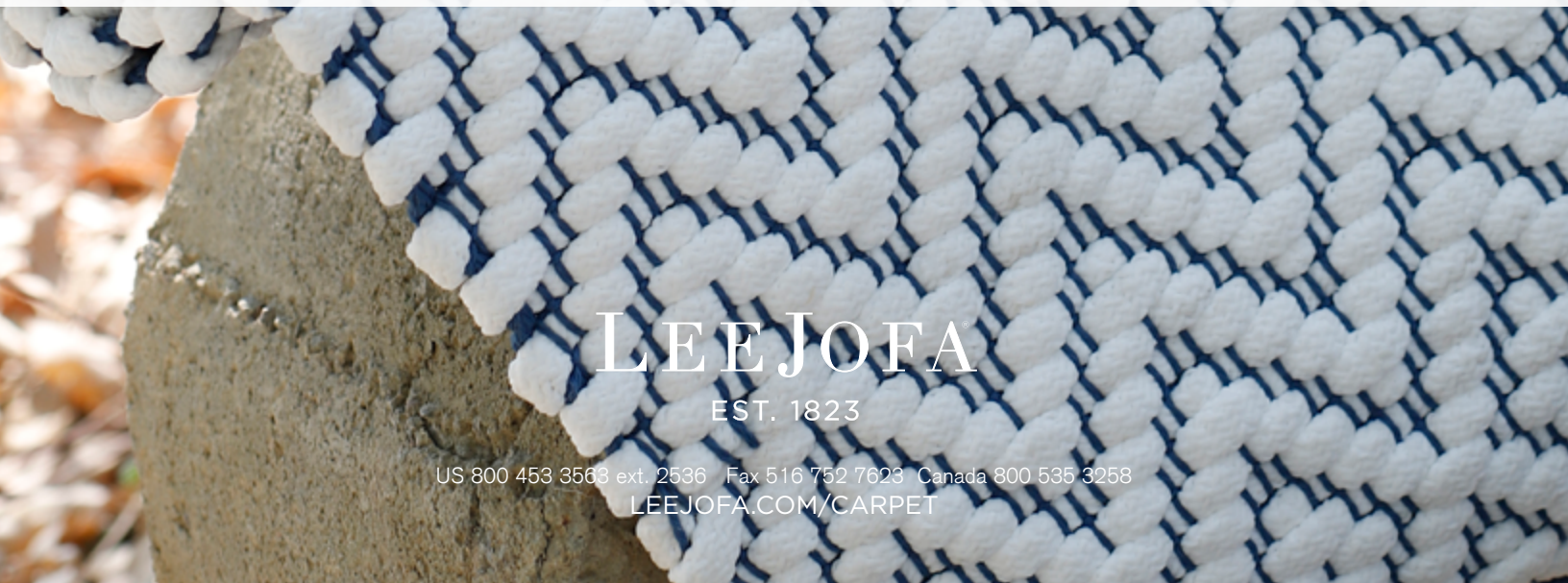
MINIMUM SIZE OF 4X6 UP TO 28X50, RUGS LARGER THAN 14X16, UPCHARGE APPLIES.  
STRIKE OFF IS SUGGESTED, BUT NOT NECESSARY WHEN COLORS ARE NOT CHANGED.  
STRIKE OFF IN 3-4 WEEKS, RUG PRODUCTION IN 12 WEEKS.

#### GENERAL INFORMATION

- For Indoor & Outdoor use providing excellent performance
- Polypropylene is a man-made resin. Small pellets are solution dyed and then shaped into flexible yarn.
- Characteristics include superb strength, colorfastness and soft texture.
- Non-Allergenic
- Tolerance for water and moisture.
- Resistance to staining, fading, mold, mildew, abrasion and sunlight.
- Lay area rug on flat surface and allow time to settle.
- Never fold, especially when wet as it can become very heavy.
- Plastic has memory, should corner curling occur, use tape to hold in place or add weight until flat again.
- This is a handwoven product, variations in overall size and texture may occur.
- Slight color striations and shading are normal.
- Carpet is not guaranteed to match photographic representation.
- Some patterns are not recommended for stairs. Inquire for further details.
- Sustainable, Recyclable
- Reversible
- Polypropylene has a melting point of 320 degrees Fahrenheit (160 degrees Celsius): ensure rug exposure does not exceed.

#### CARE & MAINTENANCE

- Rug pad recommended for indoor spaces
- To prolong the life of the rug, store rug away from inclement weather. Avoid heavy rain, snow and standing water.
- When storing, roll up keeping the front side out and place in a dry well ventilated area.
- Vacuum as needed using suction only, no bristles or beater bars.
- Do not machine wash
- Not recommended for heated floors
- Blot spills from the surface immediately and gently dab with a clean, damp cloth.
- Spot clean as needed using a damp (not wet) cloth with plain water. If the stain remains, (test a small area) use a mild detergent to blot the area or gently rub until the stain starts to lift. Rinse thoroughly with clean water and let air dry.
- For stubborn stain removal, use a one part white vinegar to two parts water solution. A tablespoon of bleach may be added but ensure to test a small inconspicuous area first. (Avoid the use of bleach on all other types of rugs) Rinse thoroughly.
- Using a soft nylon brush, clean both sides of the rug monthly with a solution of mild dish soap and water
- Always dry in sunlight by hanging or laying out the rug, flipping it over to make sure both sides dry thoroughly.
- Rugs/samples may oxidize over time (EST.2020)



LEEJOFA  
EST. 1823

US 800 453 3563 ext. 2536 Fax 516 752 7623 Canada 800 535 3258  
[LEEJOFA.COM/CARPET](http://LEEJOFA.COM/CARPET)