



LANCASTER COLLECTION
ART IN THE MAKING

LEE JOFA
CARPET

1

The beginning of any fine rug is the source of materials. Sheep are sheared to harvest their fleece. The fleece is thoroughly cleansed and washed completely. Gentle wool cleansers are used in order to maintain the integrity of the wool fibers. It is then separated and carded to prepare for spinning.



3

Large vats of boiling water are pigmented with dyes. Hanks of yarn are layered and dipped in the dyes for a precise period of time. The shades of colors can vary depending on the dye's level of penetration and position of each yarn in the hank bundle.

5

The spinning frame will put the actual twist on the roving and turn it into yarn. This is collected on wooden bobbins. In order to make two or more ply yarn the strands are twisted together on the pleyer, from several cones onto fewer spools.



2

The wool fibers are then put through a series of combing steps called carding. The final step in the carding process divides the web into small strips called pencil rovings. These are collected on large spools on the end of the card. These spools of pencil roving will be placed on the spinning frame to make yarn. The roving as it comes off the card has no twist. It is held together by the oil and natural hooks that exist on the surface of the wool fibers.



4

After the wool hanks are dyed they are set on drying racks. They are rotated, turned and flipped numerous times during the drying process to maintain even dryness. Traditional air drying is placing the yarn in the sun for several days.



6

Warping is a process, which converts the hank yarn into a linear form to give the length on the loom. Warping is done on a huge drum and the width and desired quality of the product is decided at this stage. The drum also helps to calculate number of threads and the length of the warp.



7

The three looms predominantly used by weavers in flatweave construction are the pit, stand and frame. Lancaster's collection primarily uses the pit loom which is situated on the ground. Directly underneath, is a pit with peddles for the weavers to operate. The ground absorbs the tension and speed which makes the rug more breathable and helps retain the character of the fibers. Different textures are created by using varying thickness and qualities of yarn.



8

After the weaving of the rug, there will be small fibers and threads that need to be fixed by hand using scissors. This is a detailed and time consuming process. Uneven edges are trimmed.



9

The edges of flatwoven rugs may be finished either by overcasting with the ground weft or by wrapping an extra weft over two or more pairs of warps either parallel. The rug is then serged by hand with a large needle threaded with matching wool thread. An additional extra weft in a contrasting color may be wrapped vertically over part of the selvage as further decoration. Either a hem may be created by turning under a few centimeters of the fabric and sewing it down, or the loose warp ends may be formed into a fringe.





The LANCASTER COLLECTION celebrates the beauty of pattern and the time-honored craft of the hand woven flatweave. The variety of exclusive patterns stem from simple to decorative using blended wools and novelty yarns, with our timeless color bank. These versatile area rugs are inviting to the eye and hand. The selection offers endless options with customization tools and production in a sensitive time frame.

We invite you to explore our world of The Lancaster Collection, where passion and creativity have no boundaries.

Ask your showroom representative for the “Lancaster Collection: Art in the Making” video.





UTTAM - IVORY



WRAY - LINEN



SAJUR - IVORY



PARDUS - IVORY



SAHILA - IVORY



ARENDALE - PARCHMENT



LYNWOOD - BUFF



ISERE - LATTE



NAMANDA - FERN



MEROPE - ECRU



KINDER - FAWN



SARELLA - FAWN





SAI - NATURAL



BORA RIB - SILVERLEAF



EMBLETON - LINEN



ARENDALE - ICE



QUERNMORE - IVORY



GRADBAR - IVORY



LEISTON - SANDSTONE



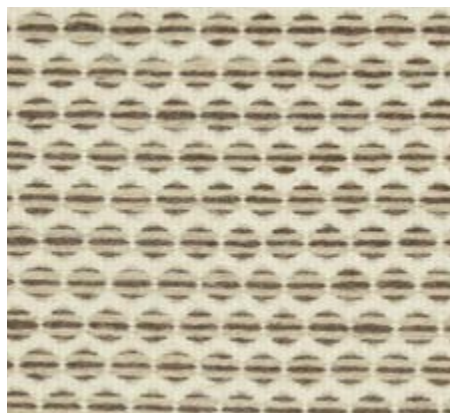
NEATH - SANDSTONE



BRECHIN - SANDSTONE



CAHABA - IVORY



SABAL - NATURAL



HAILES - BARLEY



VERZEE - ALMOND



LAKMOS - CAFE



AYUNG - MOCHA



GARWICK - COCOA



OWSTON - CARAMEL



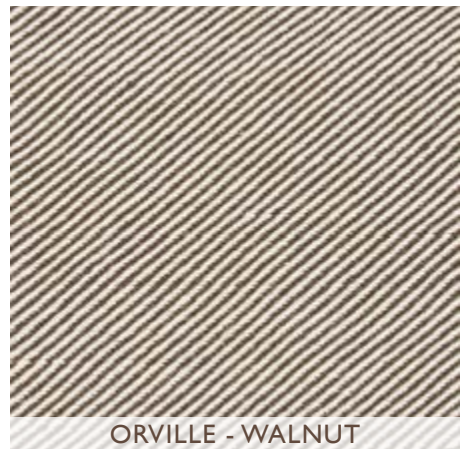
AUBETIN - CAPPUCCINO



GODWIN - COCOA



GIONA - CAPPUCCINO



ORVILLE - WALNUT



VAMOUS - LATTE



GHATA - COCOA



MORLEY - FIG



CROXDEN - LATTE



SARELLA - CHOCOLATE



BOWERHAM - MOCHA



DEGAWNY - COCOA



VERMIO - COCOA



SWANSEA - MOCHA



MEROPE - CHARCOAL



PIERIA - HEATHER



SHAS - NATURAL



FERRUM - MOCHA



BABINGTON - HEATHER



BRIXWORTH - LATTE



VELLA - PEWTER



ODELL - MOCHA



KARASU - JAVA



CRANFIELD - GRAY



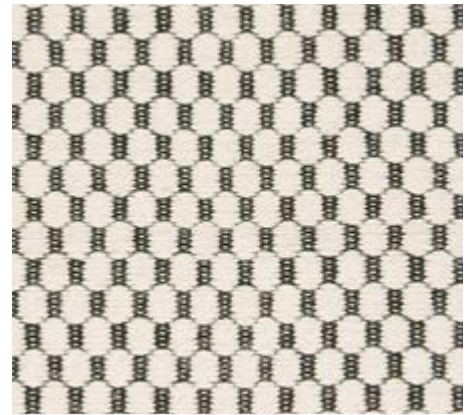
SACHI - FAWN



TRANBY - HEATHER



GRIAZ - STONE



VOIO - EBONY



PENTIL - HEATHER



EURAMO - CHARCOAL



ITON - LINEN



MIDOU - STONE



SACHI - GREY



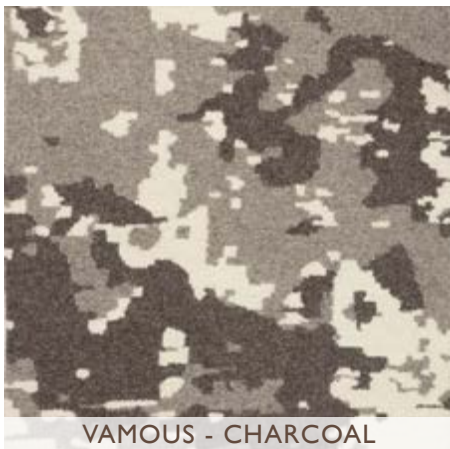
KINNEIL - STONE



AILETTE - STONE



BARIGAN - HEATHER



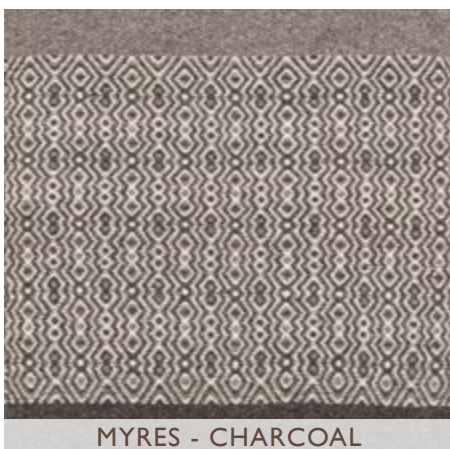
VAMOUS - CHARCOAL



CHASIA - SMOKE



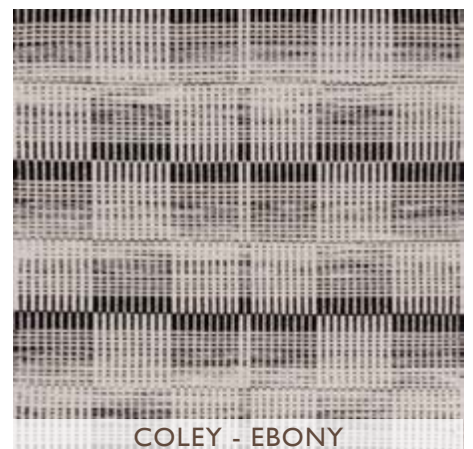
ATHOS - CHARCOAL



MYRES - CHARCOAL



KETTLE - PEWTER



COLEY - EBONY



SOHAN - HEATHER



BASSET - SMOKE



DURIAN - EBONY



EACHAM - CHARCOAL



FOSTER - CHARCOAL



WENNINGTON - CHARCOAL



SLYNE - OREO



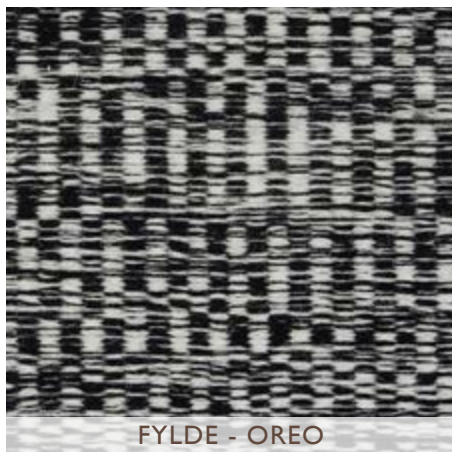
BLACKPOOL - ONYX



HEST - ONYX



ELY - OREO



FYLDE - OREO



CHAUMONT - ANTARCTIC



SCONE - HEATHER



UNDARA - CHARCOAL



BLACKSBURG - CHARCOAL



SACHI - CHARCOAL





EASTMAN - SNOW



QUERNMORE - ICE



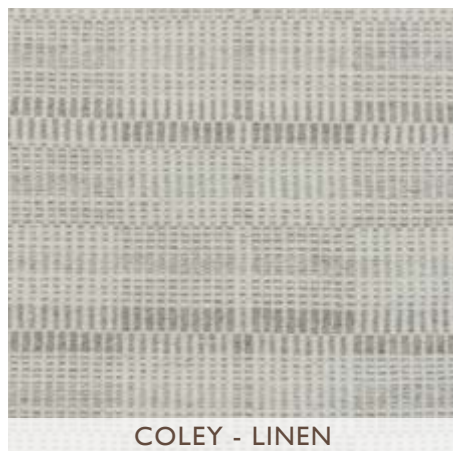
FLEETWOOD - FROST



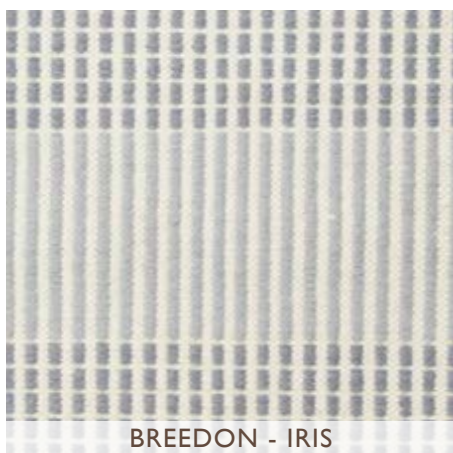
HOWDEN - STONE



CULBORNE - STONE



COLEY - LINEN



BREEDON - IRIS



LANVIA - PERFECT BLUE



DEARBORN - DENIM



POIVET - BEACH



LELAND - MARBLE



WALLACE - ANTHRACITE



CULLERTON - SLATE



BRIXWORTH - TOPAZ



EMBLETON - COBALT



LONSDALE - LAKE



BURNLEY - COASTLINE



LENBROOK - COASTLINE



SKERTON - FOG



ROCHAS - TRUE BLUE



GASTO - SEASIDE



RABANNE - MARINA



VERTUE - DENIM



PATOU - DENIM





FLEETWOOD - SKY



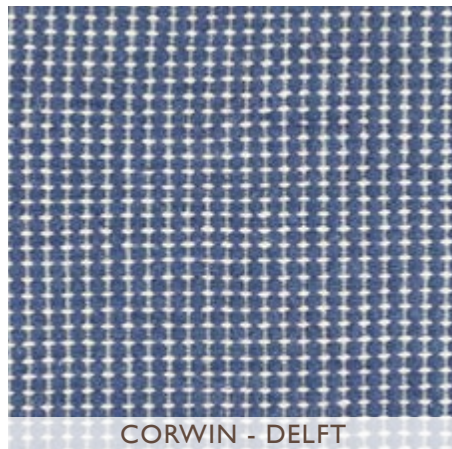
CYNIBALD - WEDGEWOOD



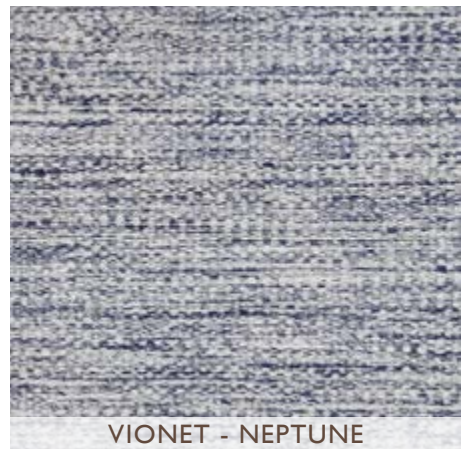
ARVEL - DELFT



COLETON - DELFT



CORWIN - DELFT



VIONET - NEPTUNE



STEINER - DENIM



WILFRED - NAVY



FOSTER - NAUTICAL



RICCI - LAKE



CHIRBURY - ICEBERG



QUINLAN - PACIFIC



SLAFAURIE - CORNFLOWER



KAYROUZ - LAGOON



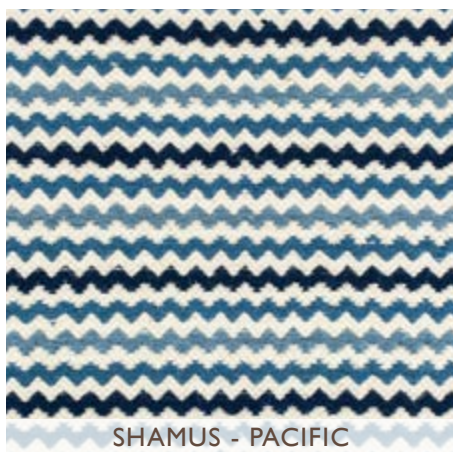
MEROPE - PACIFIC



TURNBULL - OCEAN



WITTON - INDIGO



SHAMUS - PACIFIC



MORTAIN - WEDGEWOOD



THADDEUS - SAPPHIRE





RUNIC - LAGOON



LUNE - AQUA



OWSTON - LAGOON



MELLOR - OCEAN



ISERE - LAGOON



GALGATE - OCEAN



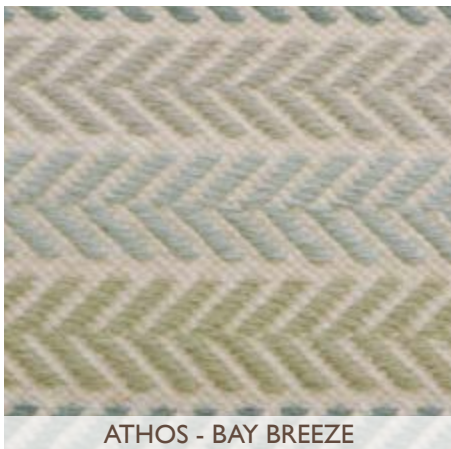
SARELLA - AQUA



GASTO - SUMMER



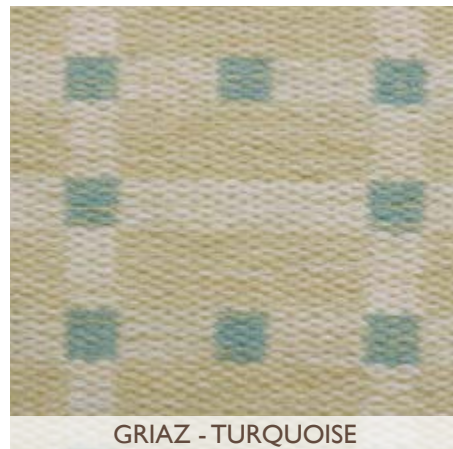
WITTON - SPRING



ATHOS - BAY BREEZE



SAI - CIEL



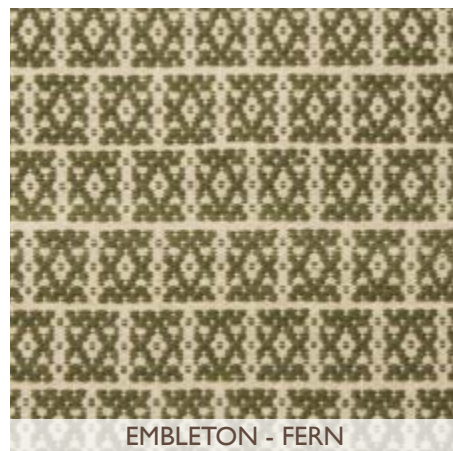
GRIAZ - TURQUOISE



WALBURY - DILL



LAURENT - MEADOW



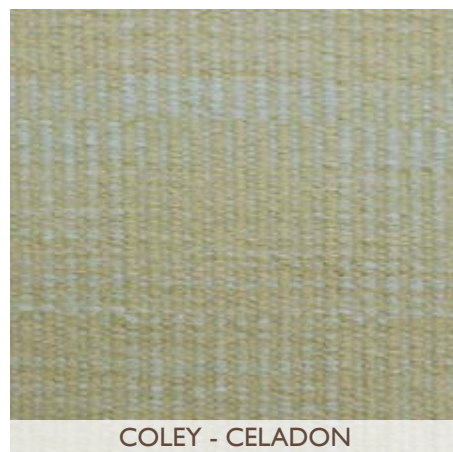
EMBLETON - FERN



GARWICK - SEA BREEZE



UTTAM - LAGOON



COLEY - CELADON



VYNE - DAFFODIL



THREAVE - MUSTARD



WEALDON - MUSTARD



EGGLETON - SUNRISE



GISBURN - AMBER



MUGLER - SAND



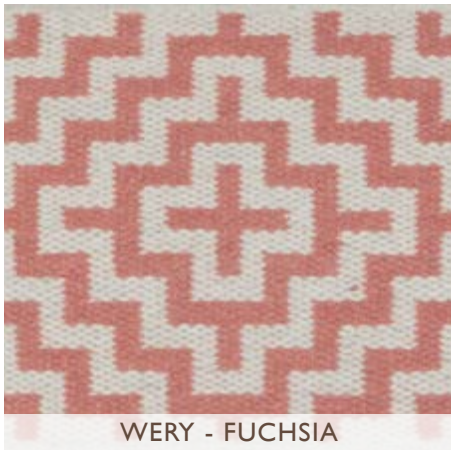
WAVELAND - SUN SHOWER



GRENSHAW - MOUNTAIN







WERY - FUCHSIA



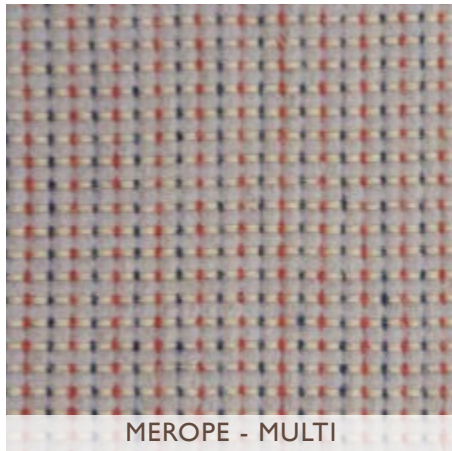
KINNEIL - FUCHSIA



GRESGARTH - BLUSH



SELLISTER - BEACH



MEROPE - MULTI



WENNINGTON - BLUSH



CROYLAND - CANDY



SARELLA - FLAME



VIHAR - MULTI



NIPHILL - CORAL



MELLOR - RASPBERRY



PENDEL - CRIMSON

CUSTOM COLOR WITH 250 S & 13 NW COLORS
 CUSTOM SIZE PROGRAM; MINIMUM OF 4X6 UP TO 28X50
 STRIKE OFF IN 2-4 WEEKS, RUG PRODUCTION IN 8-10 WEEKS
 COMPLICATED PATTERNS AND LARGE SIZES IN 10 -12 WEEKS

UPCHARGES APPLICABLE:

- RUGS LARGER THAN 14X16
- ANY COLOR OUTSIDE OF STANDARD LANCASTER COLLECTION
- LATEX BACKING AVAILABLE:

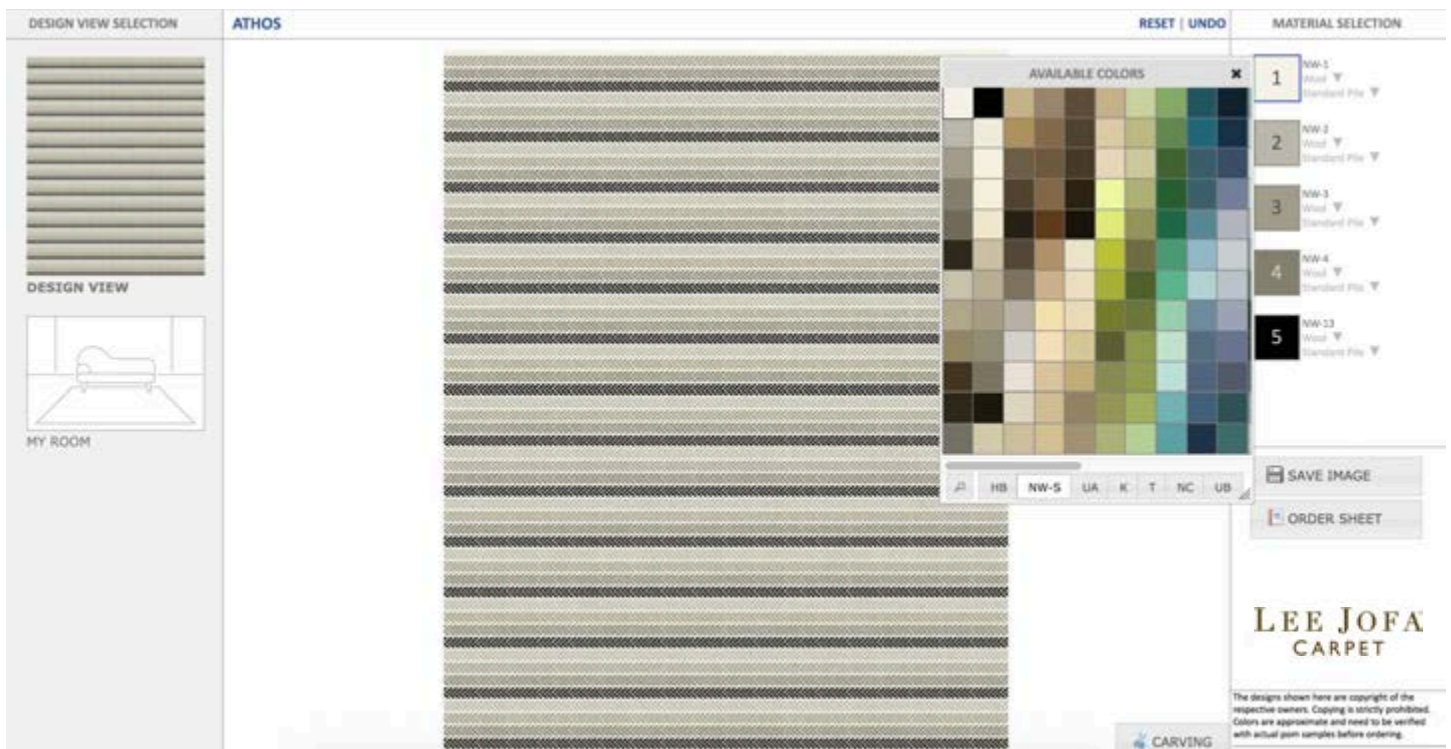
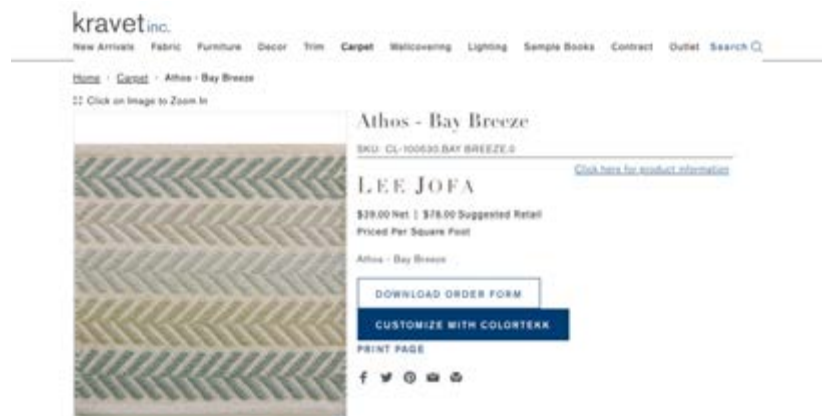
FOR STAIR AND RUNNER INSTALLATIONS WE RECOMMEND
 LATEX TO BE APPLIED TO THE BACK OF THE RUG FOR STABILITY.

FOR CUSTOM COLOR RENDERINGS:

- VISIT KRAVET.COM
- ENTER PATTERN NAME
- CLICK CUSTOMIZE WITH COLORTEKK


SELECT NW-S FOR
 LANCASTER COLOR
 OPTIONS

TO CHANGE COLORS,
 CLICK THE NUMBERED
 SWITCHES AND SELECT
 FROM AVAILABLE COLORS.



RENDERINGS CAN BE SAVED AND SENT TO CUSTOMERS, PRINTED OUT FOR STORY BOARDS OR AN ORDER SHEET CAN BE CREATED AND SENT DIRECTLY TO CUSTOMER SERVICE.

Variations in size as well as natural irregularities, color shading, weavelines and striations may appear. Shedding and sprouting often occur in handmade floorcoverings. Handspun yarns may sometimes release ends of yarn that "sprout" or "fuzz" above the pile surface. If yarn extends beyond the carpet's surface, simply clip it off so it is level with the surface pile, do not pull. Never use a vacuum with a beater bar as this may cause damage. Rotate the rug every 3 months to avoid uneven fading and wear. Spot clean as needed using a damp(not wet) cloth with plain water; don't use soap or cleaning products, as they could damage or fade the rug. For larger, deeper stains, send the rug to a professional service with experience cleaning fine rugs. To preserve the life of the rug, we recommend using a rug pad.

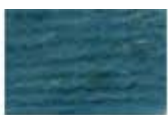
						
SI00	SI10	SI20	SI30	SI40	SI50	SI60
						
SI01	SI11	SI21	SI31	SI41	SI51	SI61
						
SI02	SI12	SI22	SI32	SI42	SI52	SI62
						
SI03	SI13	SI23	SI33	SI43	SI53	SI63
						
SI04	SI14	SI24	SI34	SI44	SI04	SI64
						
SI05	SI15	SI25	SI35	SI45	SI55	SI15
						
SI06	SI16	SI26	SI36	SI46	SI56	SI66
						
SI07	SI17	SI27	SI37	SI27	SI57	SI67
						
SI08	SI18	SI28	SI38	SI48	SI58	SI68
						
SI09	SI19	SI29	SI39	SI49	SI59	SI69

						
S170	S180	S190	S200	S210	S220	S230
						
S171	S181	S191	S201	S211	S221	S231
						
S172	S182	S192	S202	S212	S222	S232
						
S173	S183	S193	S203	S213	S223	S233
						
S174	S184	S194	S204	S214	S224	S234
						
S175	S185	S195	S205	S215	S225	S235
						
S176	S186	S196	S206	S216	S226	S236
						
S177	S187	S197	S207	S217	S227	S237
						
S178	S188	S198	S208	S218	S228	S238
						
S179	S189	S199	S209	S219	S229	S239

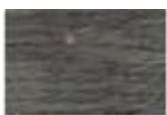
						
S240	S250	S260	S270	S280	S290	S300
						
S241	S251	S261	S271	S281	S291	S301
						
S242	S252	S262	S272	S282	S292	S302
						
S243	S253	S263	S273	S283	S293	S303
						
S244	S254	S264	S274	S284	S294	S304
						
S245	S255	S265	S275	S285	S295	S305
						
S246	S256	S266	S276	S286	S296	S306
						
S247	S257	S267	S277	S287	S297	S307
						
S248	S258	S268	S278	S288	S298	S308
						
S249	S259	S269	S279	S289	S299	S309



S310



S320



S330



S340



NW6



S311



S321



S331



S341



NW7



S312



S322



S332



S342



NW8



S313



S323



S333



S343



NW9



S314



S324



S334



S344



NW10



S315



S325



S335



NW1



NW11



S316



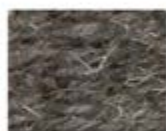
S326



S336



NW2



NW12



S317



S327



S337



NW3



NW13



S318



S328



S338



NW4



S319



S329



S339



NW5

STANDARD WOOL COLORS

CUSTOM COLORS AVAILABLE



LEE JOFA®

US 800 453 3563 ext. 2536 Fax 516 752 7623 Canada 800 535 3258
LEEJOFA.COM/CARPET