



INDOOR • OUTDOOR

LEE JOFA  
CARPET



# A PLASTIC BOTTLE TO A LIVING RUG PET YARN CREATION

Returned bottles are collected and sent to a recycling facility.



Recycling facilities will mechanically break the plastic waste into flakes which are then washed, separating all foreign materials from the plastic. The remaining product is rinsed, eliminating any remaining contaminants or cleaning agents.



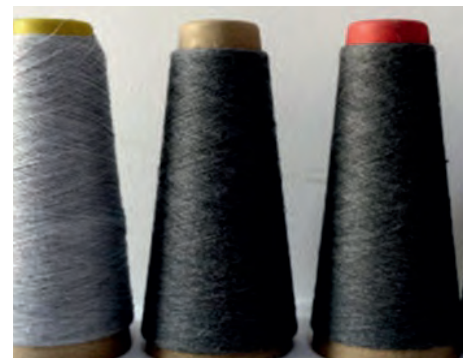
The flakes are melted to produce granulates or pellets. When these pellets are reheated to a molten liquid stage, the polymer chains are stretched to make fibers.



These fibers are added to a dye bath. Polyester fibers and their blends may be dyed under high temperature conditions above 125-130 degrees. Above 100 degrees, the fiber swells to a great extent, allowing for rapid penetration of the dye molecules.



Dyed and neutral fibers are mixed together, then twisted during spinning to form a melange yarn. This specific method of PET manufacturing does not allow re-coloring of the finished yarn as it would eliminate the melange effect.





Warping is a process which converts the hank yarn into a linear form to give the length on the loom. It is done on a huge drum, the width and desired quality of the product is decided at this stage. This drum helps to calculate number of threads and the length of the warp. Each thread is then feed into the reed of the loom for weaving.



Weaving is done by intersecting the longitudinal threads, the warp "*That Which is Thrown Across*" with the tranverse threads, the weft, "*That Which is Woven*".



Once off the loom, the rug is stretched from all sides to assure the exact size and shape. This will also help the finished rug lay better when unrolled.

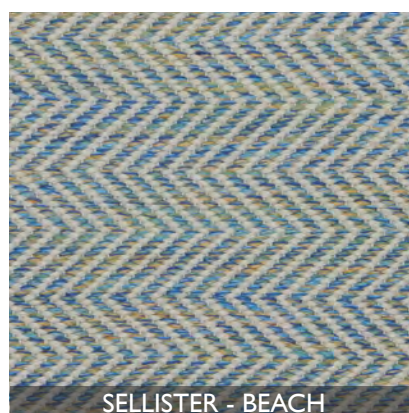
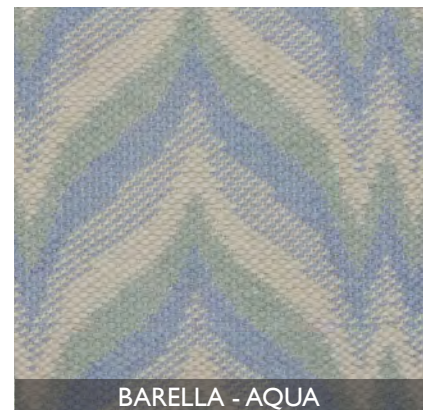
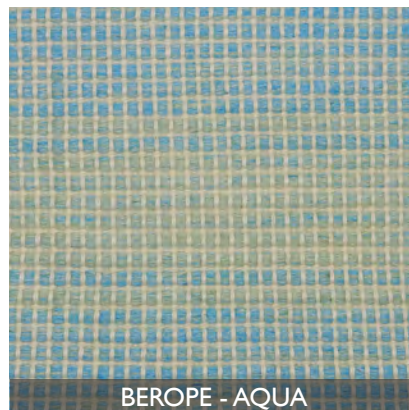
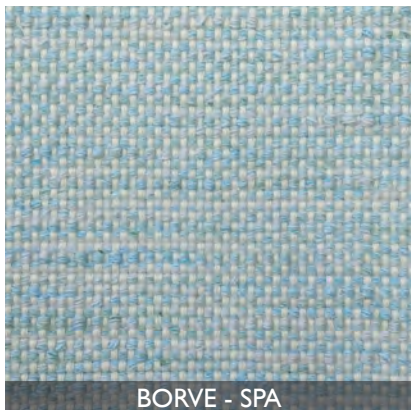
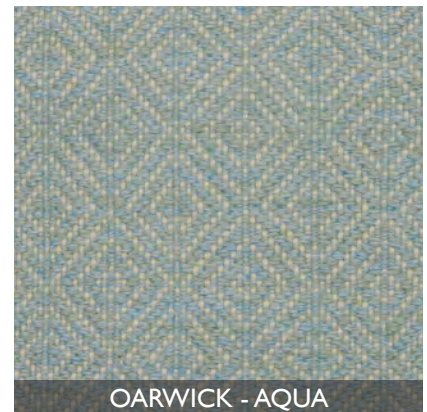
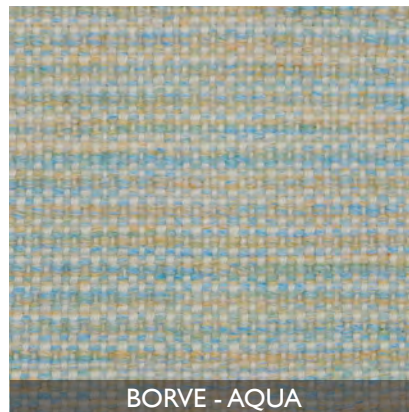
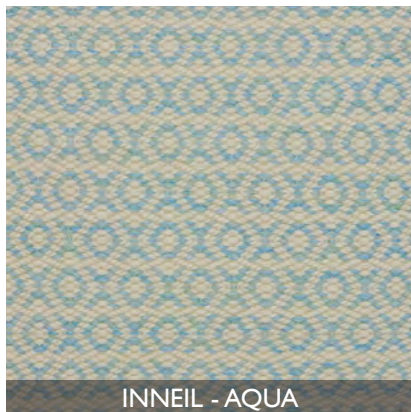
Warp threads are either knotted to create fringe or will be bound to the edges. The rug is inspected, trimming any loose threads with scissors.





Lee Jofa's INDOOR/OUTDOOR COLLECTION of area rugs feature soft, sensational flat weaves for every scenario. They are hand woven on horizontal looms using synthetic fibers called PET (polyethylene terephthalate), a material that is made from recycled plastic bottles. Our mill has developed a very specific yarn in order to make a better product in terms of feel, texture and color.

It is an all-weather yarn that resists fading, mold and mildew, offering a performance floor covering for outdoor and high-traffic areas.







BARELLA - LILAC



MARLOES - POWDER



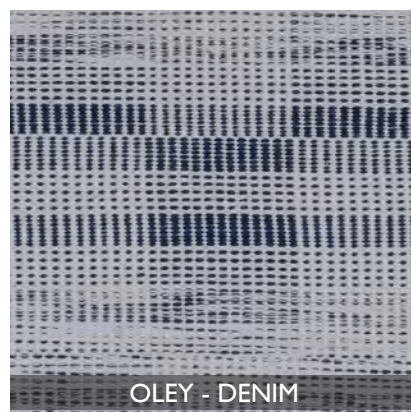
TRESAITH - POWDER



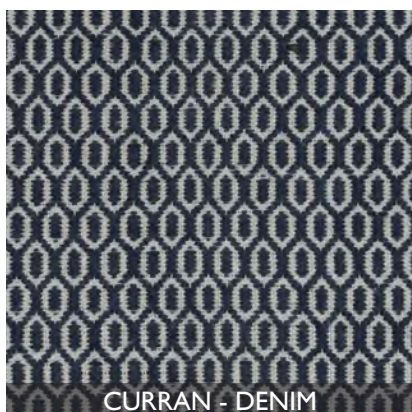
SAMANDA - CORNFLOWER



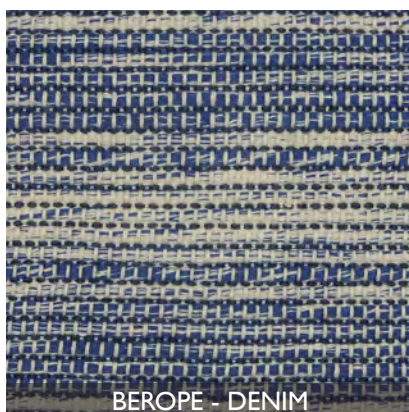
COVEAN - DELFT



OLEY - DENIM



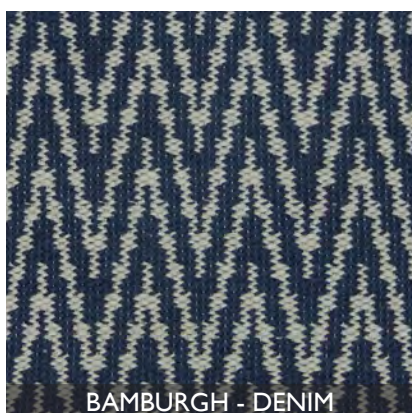
CURRAN - DENIM



BEROPE - DENIM



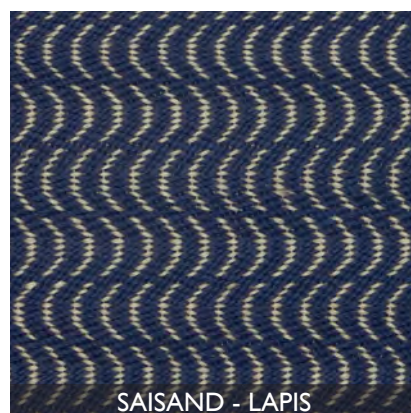
BARELLA - SLATE



BAMBURGH - DENIM

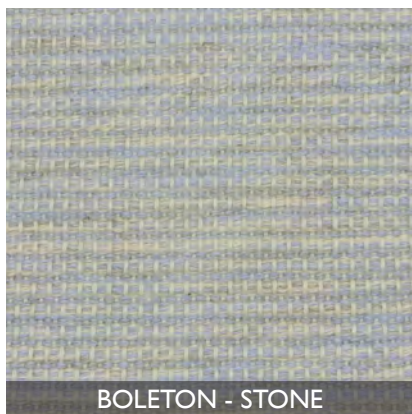


HAVERIGG - DENIM

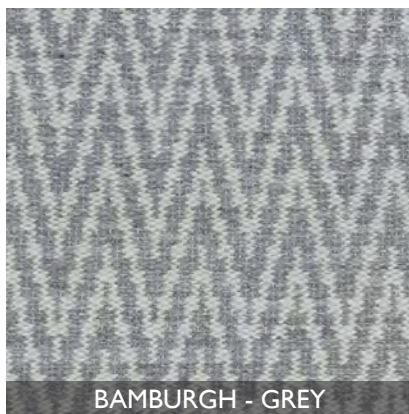


SAISAND - LAPIS

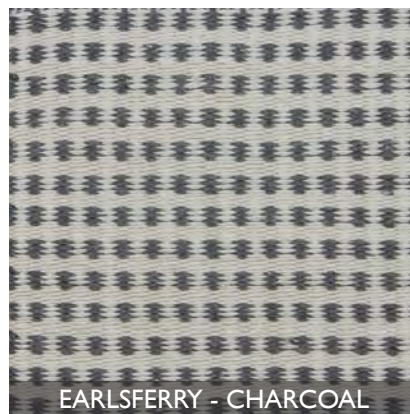




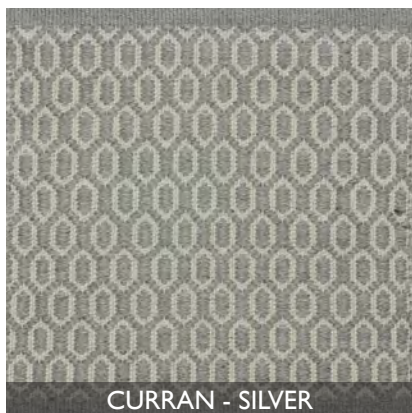
BOLETON - STONE



BAMBURGH - GREY



EARLSFERRY - CHARCOAL



CURRAN - SILVER



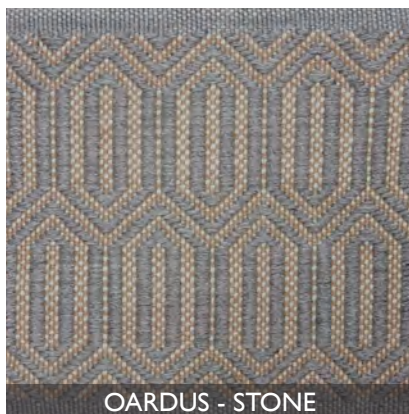
OLEY - DOMINO



BARELLA - GREY



HAVERIGG - MARBLE



OARDUS - STONE



FRINTON - PUMPKIN LATTE



BAHILA - LATTE



OHAN - BISCUIT



OARWICK - FIG



## PROGRAM SPECIFICATIONS

CHOOSE FROM 35 STANDARD  
COLORS, SHOWN HERE

CUSTOM SIZE  
MINIMUM OF 4X6 UP TO 28X50  
UPCHARGE APPLIES ON RUGS  
LARGER THAN 14X16

STRIKE OFF IN 3-4 WEEKS,  
RUG PRODUCTION IN 10-12 WEEKS

BACKING AVAILABLE WITH AN  
UPCHARGE; RECOMMENDED WITH  
STAIR AND RUNNER INSTALLATIONS  
FOR STABILITY.\*INDOOR USE ONLY

## CARE INSTRUCTIONS:

- Blot spills from the surface immediately and gently dab with a clean, damp cloth. Blot area with a dry towel to absorb extra moisture.
- Vacuum as needed using suction only, no bristles.
- Spot clean as needed using a damp (not wet) cloth with plain water. Test a small area; if the stain remains, use a mild detergent to blot the area or gently rub until the stain starts to lift. Rinse thoroughly with clean water and let air dry.
- For stubborn stain removal, chlorine bleach can be used if diluted correctly: use a one part bleach to two parts water solution. Rinse thoroughly. Avoid the use of bleach on all other types of rugs.
- If placed outside, store the rug in winter months when not in use and during inclement weather. Roll up the rug with the front side out and place it indoors in a dry, well-ventilated area. Avoid exposure to heavy rain or standing water.
- Using a soft nylon brush, clean the rug monthly with a solution of mild dish soap and water. Make sure to clean both sides of the rug.
- Dry in sunlight. Hang the rug or lay it out in the sun, then flip it over to make sure both sides dry thoroughly.

## STANDARD COLORS







LEE JOFA®

US 800 453 3563 ext. 2536 Fax 516 752 7623 Canada 800 535 3258  
[LEEJOFA.COM/CARPET](http://LEEJOFA.COM/CARPET)