



BY APPOINTMENT TO HER MAJESTY THE QUEEN
SUPPLIERS OF WALLPAPER, COLE & SON (WALLPAPERS) LTD.

Cole & Son®

MANUFACTURERS OF HAND PRINTED WALLPAPERS SINCE 1875



Cole & Son (Wallpapers) Ltd

Available exclusively through Lee Jofa showrooms and Sales reps in North America

201 Central Avenue South, Bethpage NY 11714

800.453.3563 (US) customer.service@leejofa.com

800.535.3258 (Canada) cust.service@leejofa.com

MARIINSKY DAMASK WALLPAPERS

Wallpaper Charlotte Atkinson

Floral Patterns of India

Cole & Son was founded in 1875 by John Perry, the entrepreneurial son of a Cambridgeshire merchant. Situated in Islington, North London, the business was built and developed in an area famous for the 190 hand block printing factories working there in the 18th and 19th centuries.

Throughout this period, Cole & Son printed for the well-known companies of the time including Jeffrey & Co, Sanderson and Shand Kydd and in doing so, gradually became increasingly known and praised for its innovative approach to developing new techniques and production methods. At this time most wallpaper manufacturers were intent on creating wallpapers which imitated fabrics, and so the development of the mother of pearl Jaspe – a wonderfully subtle dragged brush effect imitating silk, was developed at the Cole & Son factory along with the re-introduction of flock printing to mimic luxurious cut pile velvets.

It is to these exciting and innovative beginnings that we owe our current position in the wallpaper industry and it is in this spirit of innovation and development that we continue the work that John Perry began over a hundred and thirty years ago.

Within the Mariinsky Damask Wallpaper Collection we have gone back to some of those early developments and revived them for a modern day context, utilising both archive designs and techniques to create a wonderfully rich and diverse collection of wallpapers.

MARIINSKY DAMASK WALLPAPERS

Cole & Son draws on its vast archive to bring you Mariinsky Damask Wallpapers, a range of exciting historical designs which celebrate the drama and occasion of the theatre, opera and ballet.

Featuring mainly damask patterns, this ornamental and decorative collection with its classical detail, rich colouring and elegant proportions, contains ten stunning designs, each paying homage to celebrated stars of the stage and to iconic theatres from around the world.

Included are two well loved classics taken from older collections, alongside an exciting new flock print, and an elegant new take on the Cole & Son Jaspe.

“Painting, drawing and creating a design by hand is at the heart of how we design in the Cole & Son studio, we are a small team of artists, who value greatly the hand crafted element of our wallpaper designs”

Shauna Dennison

Creative Director Cole & Son



Cole & Son originate new designs by hand in the Design Studio. An original archive block print from 1840, inspired the Balabina design.



BALABINA

Cole & Son



Above: Balabina 108/1005

Balabina

Balabina, named after Feya Balabina, a Russian ballerina with the Kirov Ballet. Balabina, originally an archive block print has been re-worked to include a beautifully drawn hoopoe bird. It has been reproduced as a screen print with an impressive 101cm repeat. Offered in five smart colourways including pale yellow, cool stone, and gilded silver with grey, alongside a velvet red on red and a striking jade and midnight blue.

Produced on a 52cm wide 10m roll. The pattern repeat measures 101.8cm with a half drop.



108/1001
Vintage Yellow



108/1002
Stone



108/1003
Stone & Gilver



108/1004
Velvet Red



108/1005
Midnight & Jade

Left: Balabina 108/1004



CARMEN

Cole & Son



Above: Carmen 108/2010

Carmen

An ornate and graceful scrollwork damask, screen printed using a subtle flecked metallic ink on soft chalky grounds of old olive, charcoal, grey, cream and mole, Carmen, takes its name from the well-known French opera by Georges Bizet. The design dates from 19th century France and based on its repeat, almost certainly originated from a silk weaving mill, probably around Lyon. It is produced here on a 68.5cm roll.

Produced on a 68.5cm wide 10m roll. The pattern repeat measures 64cm with a straight match.



108/2006
Khaki



108/2007
Gold



108/2008
Linen



108/2009
Mole



108/2010
Charcoal

Left: Carmen 108/2006





PETROUCHKA

Cole & Son



Above: Original method of flocking at Cole & Son

Petrouchka

A luxurious flock wallpaper, adding intense colour and drama to any interior; Petrouchka re-introduces the flock print to the Cole & Son library.

Flock printing, the application of wool or synthetic fibres to paper was originally invented in the 17th century to imitate expensive cut velvet wall hangings. Petrouchka has been printed at a traditional paper mill in the North of England in a range of five jewel-like colourings of drawing room red, beige green, shimmering graphite, indigo blue and a vintage lilac.

Produced on a 68.5cm wide 10m roll. The pattern repeat measures 72cm with a straight match.



108/3011
Blue



108/3012
Green



108/3013
Charcoal



108/3014
Red



108/3015
Lilac

Left: Petrouchka 108/3015 Previous Page: Petrouchka 108/3011



STRAVINSKY

Cole & Son



Above: Stravinsky 108/4019

Stravinsky

Stravinsky combines a classic damask print with a full width tile layout and a striking aged patina effect. This two tone pattern with its square block repeat offers a more contemporary look and is presented in five colourways – a soft chalky white, and a vivid emerald green alongside subtly toned metallic of silver, silver and bronze.

Produced on a 52cm wide 10m roll. The pattern repeat measures 52cm with a straight match.



108/4016
Green



108/4017
Charcoal & Bronze



108/4018
Silver



108/4019
Silver



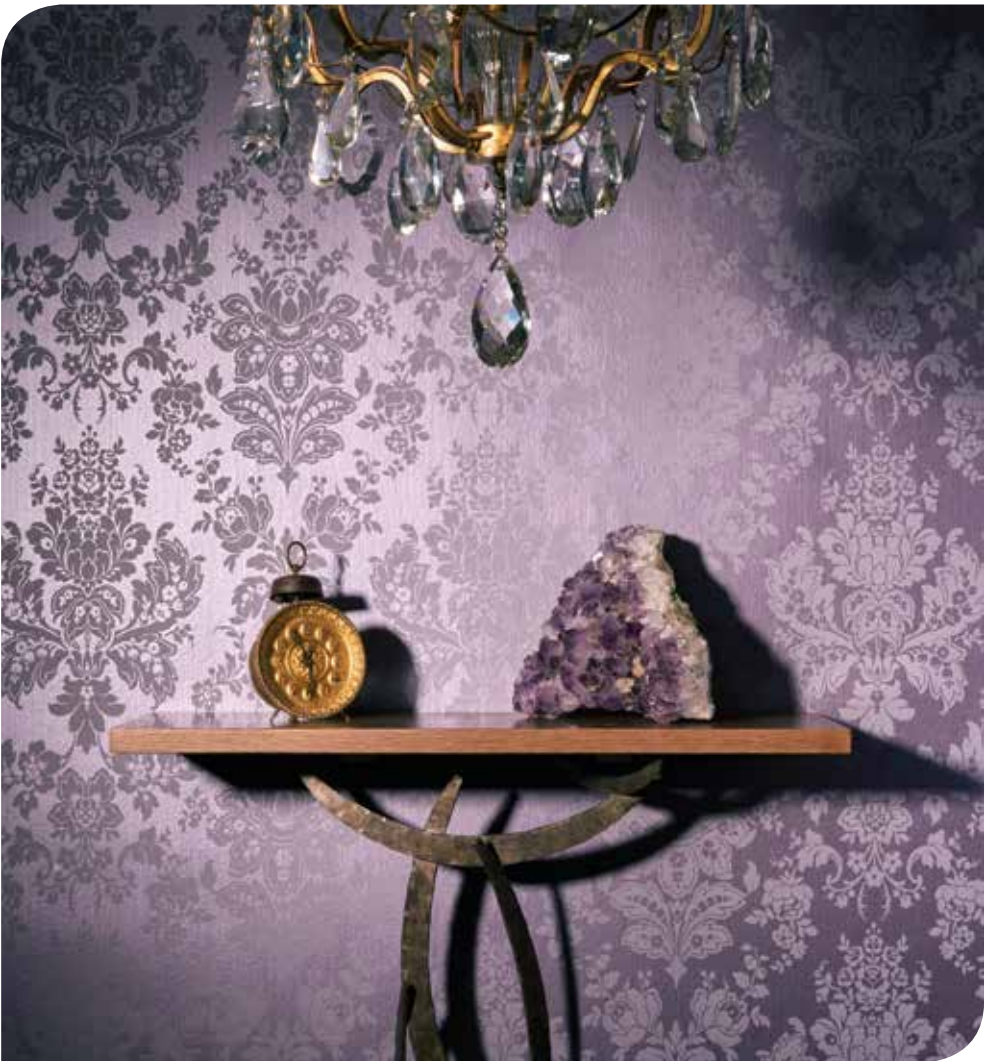
108/4020
White

Left: Stravinsky 108/4016



GISELLE

Cole & Son



Above: Giselle 108/5025

Giselle

A delicate trailing damask motif dances across a Cole & Son classic- the Jaspe. Re-introduced recently the Jaspe is one of our oldest and most enduring designs. Historically produced at the Cole & Son factory in North London using a brush to create a random striae effect, this was one of many original techniques created by Coles' founder John Perry in the 19th century, to mimic silk fabric. In a range of nine shimmering mother of pearl colourings, Giselle is at once timeless and romantic.

Produced on a 52cm wide 10m roll. The pattern repeat measures 64cm with a straight match.



108/5021
Pearl



108/5022
Linen



108/5023
Champagne



108/5024
Shell Pink



108/5025
Plum



108/5026
Blue



108/5027
Forest Green



108/5028
Leaf Green



108/5029
Old Olive

Left: Giselle 108/5024



CAROUSEL STRIPE

Cole & Son



Above: Carousel Stripe 108/6030

Carousel Stripe

Bringing to life another Cole & Son classic archive print, Carousel Stripe has been updated and recreated using innovative modern print techniques in two of the original colourways. Shimmering dragged-brush ribbons of coloured metallics line up to create a wonderfully vibrant and glamorous wallpaper.

Carousel Stripe was originally produced using a stripe pan, each section in the pan housed a separate colour and was filled by hand to produce this complex and beautiful striped wallpaper. Due to the ten striking metallic colours, the Carousel Stripe continues to be one of the most technically difficult designs to produce.

Produced on a 52cm wide 10m roll with a random match.



108/6030
Linen



108/6031
Charcoal

Left: Carousel Stripe 108/6031



Fonteyn

Cole & Son



Above: Fonteyn 108/7034

Fonteyn

Fonteyn takes its name from our well known prima ballerina, who gained worldwide acclaim with the Royal Ballet. Interwoven trails and sprigs of honeysuckle and milk thistle pirouette across this subtle two-tone design, screen printed to give an especially soft matt appearance. It is presented in seven chalky hues of stone, old olive, parchment, biscuit, pale yellow and petrol.

Produced on a 68.5cm wide 10m roll. The pattern repeat measures 64cm with a straight match.



108/7032
Mink



108/7033
Teal



108/7034
Stone



108/7035
Old Olive



108/7036
Buff



108/7037
Parchment



108/7038
Vintage Yellow

Left: Fonteyn 108/7033



PUSHKIN

Cole & Son



Above: Pushkin 108/8041

Pushkin

The opulence of the Persian carpet inspired Pushkin, named after Alexander Pushkin, one of the greatest Russian playwrights and poets of our time. An exuberant multi-coloured paper featuring classic oriental motifs, this design is bold and bohemian. Presented in an array of colourful combinations, including charcoal and ginger, red and coral, emerald and lime, charcoal and grey, plaster pink and olive and finally a very traditional red and teal, this handsome wallpaper is sure to create drama in any interior.

Produced on a 68.5cm wide 10m roll. The pattern repeat measures 38cm with a straight match.



108/8039
Coral



108/8040
Multi-coloured



108/8041
Forest Green



108/8042
Ginger & Charcoal



108/8043
Charcoal



108/8044
Pastel

Left: Pushkin 108/8040



BELLINI

Cole & Son



Above: Bellini 108/9047

Bellini

Bellini is a re-working of a Cole & Son surface print design from the 1950s. Featuring a pretty water-coloured arrangement of tiles containing loosely sketched florals and geometrics, Bellini, named after Vincenzo Bellini the famous Italian composer, is presented in four simple colourings of charcoal and white, china blue on white, white on grey and a subtle gilver on stone.

Produced on a 52cm wide 10m roll. The pattern repeat measures 70cm with a straight match.



108/9045
Blue & White



108/9046
Black & White



108/9047
Grey & White



108/9048
Stone & Silver

Left: Bellini 108/9046



ANTIQUE MIRROR

Cole & Son



Above: Antique Mirror 92/2010

Antique Mirror

Antique Mirror, a Cole & Son favourite, features foxed metallic panels on a foil base paper creating the illusion of aged mirror panelling in three mineral colourings of gold, silver and gilver. This design offers a modern twist on the trend for antique mirror tiles.

Produced on a 53cm wide 10m roll. The pattern repeat measures 53cm with a half drop.



92/2008
Gilver



92/2009
Silver



92/2010
Gold

Left: Antique Mirror 92/2008

THE UPDATED COLE & SON APP

The Cole & Son iPad App provides you with our entire wallpaper portfolio at your fingertips.

- Search by colour
- Search by style
- Purchase samples using PayPal
- Available to download free from the Apple store
- Updated with all new collections



FOR DAILY INTERIORS INSPIRATION FOLLOW US ON SOCIAL MEDIA

- 🐦 twitter.com/Cole_And_Son
- 📌 pinterest.com/coleandsonpins/
- 📘 facebook.com/pages/Cole-Son-Wallpaper/
- 📷 [cole_and_son_wallpapers](https://www.instagram.com/cole_and_son_wallpapers)

Cole & Son would like to thank...

Porta Romana www.portaromana.co.uk

Yves Delorme www.yvesdelormeparis.com

Bob Johnston www.bobjohnstonbaskets.co.uk

Janie Graham www.janiegrahamarts.co.uk

Jonathan Charles Fine Furniture www.jonathancharlesfurniture.com

Please note:

The Mariinsky Damask Wallpapers Collection meets the contract fire performance classification: EN 13501-1:2007+A1:2009, B-s1,d0.

The colours in this brochure may vary from the original wallpaper and we therefore recommend ordering samples in order to view the true colours. Samples can be ordered from **www.cole-and-son.com** or the Cole & Son Pattern Book iPad App.

To ensure a smooth finish when using metallic papers, prepare the walls carefully and line with a high grade lining paper. We recommend that you use Cole & Son Tub Paste. These wallpapers are paste the wall products.