

LEEJOFA

FURNITURE WORKROOM





LEEJOFA

FURNITURE WORKROOM

Lee Jofa Workroom is a comprehensive resource for designers. Our easy to follow program of bench made upholstery offers the ultimate flexibility in styling and size. Personalize each piece with options ranging from traditional to modern. Classically current in style, Lee Jofa upholstery is designed to layer into a well-collected home. Order with confidence that a Workroom piece of upholstery will reflect your unique design and delight in comfort and quality.

FRAMES.....	4
ARM SELECTIONS.....	14
BACK SELECTIONS.....	16
BASE SELECTIONS.....	18
DECORATIVE OPTIONS.....	21
CUSHIONING - STANDARDS AND OPTIONS ..	23
FINISHES.....	24
NAILHEADS.....	26
TERMS & CONDITIONS	27

FRAMES



Choose from our selection of sofa, loveseat, sectional, chaise, chairs and ottoman frames – all graciously scaled and perfectly proportioned. We offer multiple depths to ensure a range of comfort and function, priced by the inch.

SOFA, LOVESEAT and CHAIR

Actual widths will vary based upon exact arm width, fabric selection and industry standard tolerances.



LOVESEAT JF58

37"D | JF5837
40"D | JF5840
43"D | JF5843

OW/IW = 58"/44"
ARMS DS, LS, LT, SS, ST

OW/IW = 56"/44"
ARMS ET, ME, TF5, TT5

OW/IW = 54"/44"
ARMS HE, SA, TF, TT

LOVESEAT JF64*

37"D | JF6437
40"D | JF6440
43"D | JF6443

OW/IW = 64"/50"
ARMS DS, LS, LT, SS, ST

OW/IW = 62"/50"
ARMS ET, ME, TF5, TT5

OW/IW = 60"/50"
ARMS HE, SA, TF, TT

*Standard with two seats



SOFA JF76

37"D | JF7637
40"D | JF7640
43"D | JF7643

OW/IW = 76"/62"
ARMS DS, LS, LT, SS, ST

OW/IW = 74"/62"
ARMS ET, ME, TF5, TT5

OW/IW = 72"/62"
ARMS HE, SA, TF, TT

SOFA JF82

37"D | JF8237
40"D | JF8240
43"D | JF8243

OW/IW = 82"/68"
ARMS DS, LS, LT, SS, ST

OW/IW = 80"/68"
ARMS ET, ME, TF5, TT5

OW/IW = 78"/68"
ARMS HE, SA, TF, TT



EXTENDED SOFA JF88

37"D | JF8837
40"D | JF8840
43"D | JF8843

OW/IW = 88"/74"
ARMS DS, LS, LT, SS, ST

OW/IW = 86"/74"
ARMS ET, ME, TF5, TT5

OW/IW = 84"/74"
ARMS HE, SA, TF, TT



CHAIR JF36

37"D | JF3637
40"D | JF3640
43"D | JF3643

OW/IW = 36"/22"
ARMS DS, LS, LT, SS, ST

OW/IW = 34"/22"
ARMS ET, ME, TF5, TT5

OW/IW = 32"/22"
ARMS HE, SA, TF, TT



SWIVEL • SWIVEL GLIDER JF36S • JF36SG

37"D | JF36S37 • JF36SG37
40"D | JF36S40 • JF36SG40
43"D | JF36S43 • JF36SG43

OW/IW = 36"/22"
ARMS DS, LS, LT, SS, ST

OW/IW = 34"/22"
ARMS ET, ME, TF5, TT5

OW/IW = 32"/22"
ARMS HE, SA, TF, TT

Swivel Glider available with skirt only.

SOFA, LOVESEAT and CHAIR DEPTH



37"OD - 19"SD



40"OD - 22"SD



43"OD - 25"SD

The following dimensions apply to all of our standard frames:
Overall Height = 35.5", Seat Height = 20.5", Arm Height = 24"- 25.5"

OTTOMAN



OTTOMAN JF28-O

OW = 28.5"
OD = 20.5"
OH = 19"

TWO ARM CHAISE

Actual widths will vary based upon exact arm width, fabric selection and industry standard tolerances.



TWO ARM CHAISE JF-CHS

68"D | JF-CHS/68
71"D | JF-CHS/71

OW/IW = 36"/24"
ARMS LT, ST

OW/IW = 33"/24"
ARMS ET, TT5

OW/IW = 31"/24"
ARMS TT

CHAISE DEPTHS



68"OD - 50"SD



71"OD - 53"SD





SLIPPER CHAIRS



SLIPPER CHAIR • SWIVEL • CASTERS
JF23 • JF23S* • JF23C*

OW = 23.5"
 OD/SD = 36"/22.5"
 OH/SH = 36"/20"

*Swivel & Casters available Fall 2020 - Skirted Only



SLIPPER CHAIR • SWIVEL • CASTERS
JF25 • JF25S* • JF25C*

OW = 25.5"
 OD/SD = 36"/22.5"
 OH/SH = 36"/20"

*Swivel & Casters available Fall 2020 - Skirted Only

BACKS



TN | TIGHT NOTCHED BACK



TR | TIGHT ROLLED BACK

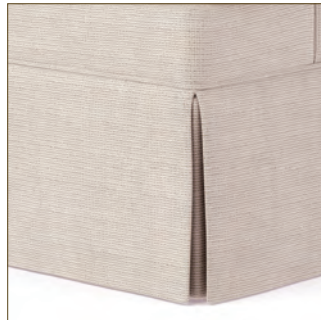


TS | TIGHT SQUARE BACK

BASES



BF | UPHOLSTERED BASE
 2" OFF THE FLOOR



DSS | TALL DRESSMAKER SKIRT
 9.5"OH



DSW | WATERFALL SKIRT
 12.5"OH



PB | PLINTH BASE
 2.5" OFF THE FLOOR,
 INSET 1" FROM EDGES



TB | TAPERED BLOCK LEG
 4"OW x 3.5"OH



SECTIONAL

Actual widths will vary based upon exact arm width, fabric selection and industry standard tolerances.



**LEFT OR RIGHT ONE ARM
CORNER SOFA**

JF-LCS OR JF-RCS

40"D | JF-LCS/40 or JF-RCS/40

OW/IW = 91"/68" ARMS DL, DS, LS, LT, PL, SS, ST
OW/IW = 90"/68" ARMS ET, ME, TF5, TT5
OW/IW = 89"/68" ARMS HE, SA, TF, TT

43"D | JF-LCS/43 or JF-RCS/43

OW/IW = 94"/71" ARMS DS, LS, LT, SA, SS, ST,
OW/IW = 93"/71" ARMS ET, ME, TF5, TT5
OW/IW = 92"/71" ARMS HE, SA, TF, TT



**LEFT OR RIGHT ONE ARM
SOFA**

JF-LAS OR JF-RAS

40"D | JF-LAS/40 or JF-RAS/40

43"D | JF-LAS/43 or JF-RAS/43

OW/IW = 76"/69" ARMS DL, DS, LS, LT, PL, SS, ST
OW/IW = 75"/69" ARMS ET, ME, TF5, TT5
OW/IW = 74"/69" ARMS HE, SA, TF, TT



**LEFT OR RIGHT ONE ARM
LOVESEAT**

JF-LAL OR JF-RAL

40"D | JF-LAL/40 or JF-RAL/40

43"D | JF-LAL/43 or JF-RAL/43

OW/IW = 53"/46" ARMS DL, DS, LS, LT, PL, SS, ST
OW/IW = 52"/46" ARMS ET, ME, TF5, TT5
OW/IW = 51"/46" ARMS HE, SA, TF, TT



**LEFT OR RIGHT ONE ARM
CHAISE**

JF-LCH OR JF-RCH

68"D | JF-LCH/68 or JF-RCH/68

71"D | JF-LCH/71 or JF-RCH/71

OW/IW = 30"/23" ARMS LT, ST
OW/IW = 29"/23" ARMS ET, TT5
OW/IW = 28"/23" ARMS TT



CORNER CHAIR

JF-CC

40"D | JF-CC/40
OW = 40"

43"D | JF-CC/43
OW = 43"



ARMLESS SOFA

JF-ARMS

40"D | JF-ARMS/40

43"D | JF-ARMS/43

OW = 69"



ARMLESS LOVESEAT

JF-ARML

40"D | JF-ARML/40

43"D | JF-ARML/43

OW = 46"

SECTIONAL DEPTH



40"OD - 22"SD



43"OD - 25"SD

OD/SD ONE ARM CHAISES 68" / 50" or 71" / 53"

The following dimensions apply to all of our standard frames:
Overall Height = 35.5", Seat Height = 20.5", Arm Height = 24"- 25.5"

SECTIONAL SAMPLE CONFIGURATIONS



JF-LAS/JF-RCH

LEFT ONE ARM SOFA | RIGHT ONE ARM CHAISE



JF-LAS/JF-RCH

LEFT ONE ARM SOFA | RIGHT ONE ARM CHAISE



JF-LCS/JF-RAS

LEFT ONE ARM CORNER SOFA | RIGHT ONE ARM SOFA



JF-LCH/JF-ARML/JF-RCH

LEFT ONE ARM CHAISE | ARMLESS LOVESEAT | RIGHT ONE ARM CHAISE





ARMS



Thirteen arm styles provide a range of looks. Each are sculpted by hand with both style and comfort in mind.



DS | SLOPED SOCK ARM
WITH SEAT CUSHION
TO FRONT*
6"OW



ET | ENGLISH ARM WITH
T SEAT CUSHION
4.5"OW



HE | TAPERED WITH SEAT
CUSHION TO FRONT*
BS Back only
Swivel Glider not available
2.5"OW



LS | PANEL ARM
WITH SEAT CUSHION
TO FRONT*
6"OW



LT | PANEL ARM WITH
T SEAT CUSHION
6"OW



ME | MODIFIED ENGLISH ARM
WITH SEAT CUSHION
TO FRONT*
4.5"OW



SA | SLOPED TRACK ARM
WITH SEAT CUSHION
TO FRONT*
3.5"OW



SS | SOCK ARM WITH
SEAT CUSHION
TO FRONT*
6"OW



ST | SOCK ARM WITH
T SEAT CUSHION
6"OW



TF | 3" TRACK ARM WITH
SEAT CUSHION
TO FRONT*
3"OW



TT | 3" TRACK ARM WITH
T SEAT CUSHION
3"OW



TF5 | 5" TRACK ARM WITH
SEAT CUSHION
TO FRONT*
5"OW



TT5 | 5" TRACK ARM WITH
T SEAT CUSHION
5"OW

Arm height is 25.5" for all except English Arm - 24"
Tapered Arm and all Track Arms - 24.5"

*Seat cushion to front arms not available on Chaise

BACKS



Workroom furniture is made to look good from every angle.
Choose from seven back designs, in loose and tight configurations
for luxurious comfort and support.



BB | BUTTON BORDER EDGE BACK / T-CUSHION



BE | BORDER EDGE BACK / T-CUSHION



BS | BORDER EDGE BACK / STRAIGHT CUSHION



KE | KNIFE EDGE BACK / T-CUSHION



NB | BORDERLESS TIGHT BACK / T-CUSHION



SB | BORDER EDGE TIGHT BACK / T-CUSHION



SR | ROLLED TIGHT BACK* / T-CUSHION

*Not available on Sectional

BASES



Eleven base selections, as well as standard caster and ferrule details, allow for a design sure to complement any setting.

SKIRTED BASE



DSS | TALL DRESSMAKER SKIRT
9.5"OH



DSW | WATERFALL SKIRT
SEAT TO FRONT
12.5" FRONT OH



DSW | WATERFALL SKIRT
T CUSHION
12.5" FRONT OH

EXPOSED WOOD LEG WITH SHAPED FENDER



ENGLISH LEG
3"OW x 6.25"OH

EAB | ANTIQUE BRASS CASTER
EBN | BRUSHED NICKEL CASTER
ELN | NO CASTER



TRADITIONAL LEG
3"OW x 6"OH

RAB | ANTIQUE BRASS CASTER
RBN | BRUSHED NICKEL CASTER
RLN | NO CASTER (3"OW x 5.5"OH)



SPIRAL LEG
3.5"OW x 6.25"OH

SLN



TAPERED LEG
2.5"OW x 6.25"OH

TAB | ANTIQUE BRASS CASTER
TBN | BRUSHED NICKEL CASTER
TLN | NO CASTER



TSB | BRONZE SABOT
TSN | NICKEL SABOT



EXPOSED WOOD LEG WITH STRAIGHT FENDER



MODERN LEG
2.25"OW x 3.5"OH

ML | NO SABOT
MB | BRONZE SABOT
MN | NICKEL SABOT



TAPERED BLOCK LEG
4"OW x 3.5"OH
TB



RIBBED BLOCK LEG
7"OW x 2"OH
RB

TO THE FLOOR WITH STRAIGHT FENDER



UPHOLSTERED BASE
2" OFF THE FLOOR
BF



PLINTH BASE
2.5" OFF THE FLOOR,
INSET 1" FROM EDGES
PB

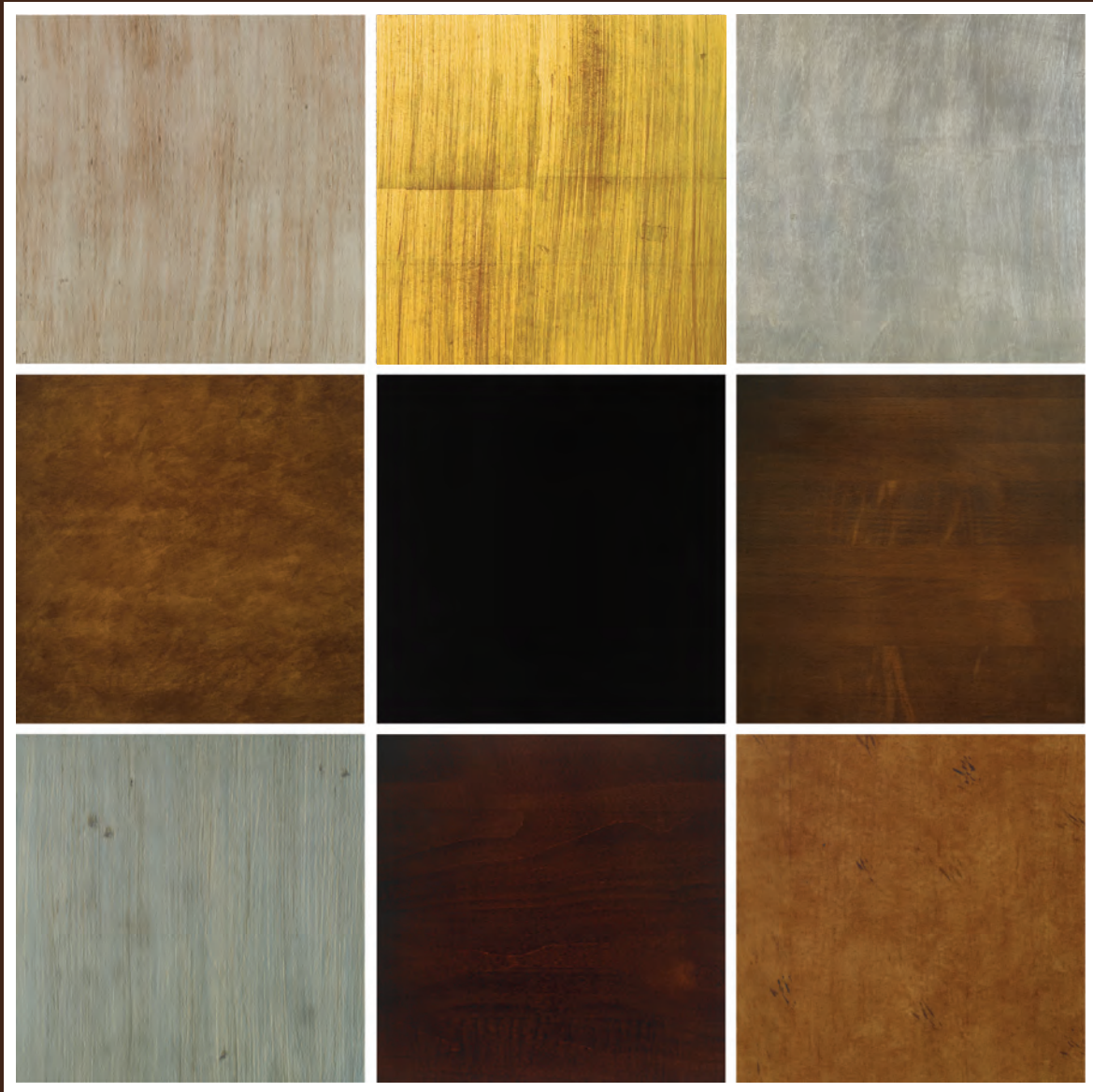


SHAPED FENDER



STRAIGHT FENDER

DECORATIVE OPTIONS & FINISHES



Enhance your frame by adding decorative elements such as tailoring and welt details, nailhead placement and multiple cushioning options. From classic wood tones to high gloss enamels and antiqued paints, our finishes are created from 10 steps of hand-applied primer, stains, paints and decorative effects.

We can also match custom colors to personalize your project.

DECORATIVE OPTIONS

FABRIC

**KRAVET
GRADED FABRIC**

**LEE JOFA
GRADED FABRIC**

**LEE JOFA
LEATHER**

COM/COL

TRIM (Must Specify One)



WELTED

1/4" AROUND FRAME
AND CUSHIONS



WELTLESS

SIMPLE SEAM WITH SINGLE WELT
AROUND BASE



BASEBALL STITCH

SIMPLE SEAM, DOUBLE TOP STITCHED
WITH SINGLE WELT AROUND BASE



FRENCH SEAM

INVERTED SEAM, TOP STITCHED
WITH SINGLE WELT AROUND BASE



DECORATIVE TRIMMINGS

*ADDITIONAL

BORDER • NOT APPLICABLE ON SKIRTS (Must Specify One)



FRONT BORDER



FRONT BORDERLESS

SEAT CUSHIONS

SPRING BLEND DOWN - Standard

Polyurethane foam encases covered coil springs surrounded by 50% blown polyester fiber blended with a 50% combination of 75% small duck feathers and 25% gray goose down sewn into a channeled down proof ticking bag.

Supportive | Some Maintenance

COMFORT BLEND - No Charge

Polyurethane foam surrounded by layers of blown polyester fiber sewn into a channeled bag.

More Supportive | Less Maintenance

DOWN PLUS - No Charge

Polyurethane foam surrounded by 50% blown polyester fiber blended with a 50% combination of 75% small duck feathers and 25% gray goose down sewn into a channeled down proof ticking bag.

Soft | Requires Maintenance

FEATHER DOWN - Additional

75% small duck feathers blended with 25% gray goose down sewn into a channeled down-proof ticking bag.

Luxurious-Soft | Requires Maintenance

BACK CUSHIONS

DOWN PLUS - Standard

Loose back comprised of 50% blown polyester fiber blended with a 50% combination of 75% small duck feathers and 25% gray goose down sewn into a channeled down proof ticking bag.

Soft and Supportive | Requires Maintenance

FIBER - No Charge

Loose back comprised of 100% blown polyester fiber in a muslin bag.

More Supportive | Less Maintenance

FEATHER DOWN - Additional

Loose back comprised of 75% small duck feathers blended with 25% gray goose down sewn into a channeled down-proof ticking bag.

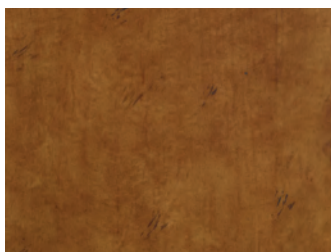
Luxurious-Soft | Requires Maintenance



FINISHES

STANDARD FINISHES

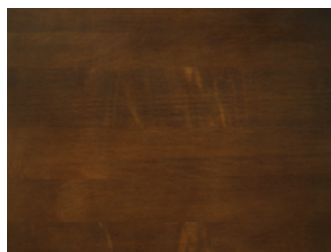
WOOD STAINS



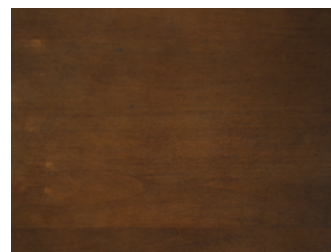
Wheat



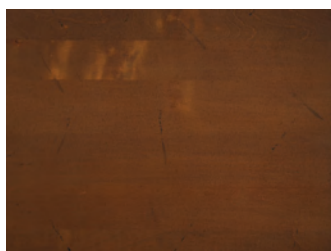
Burnt Umber



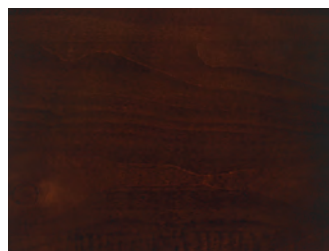
Walnut



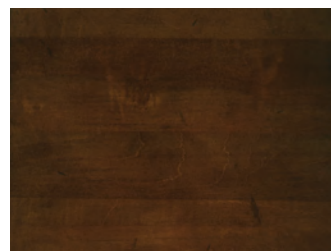
Distressed Walnut



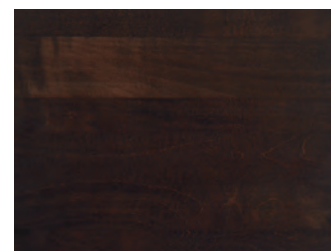
Cherry



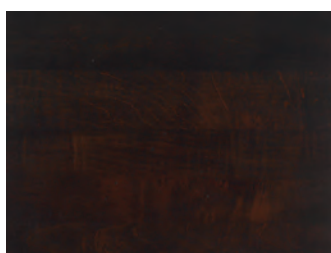
Claridge



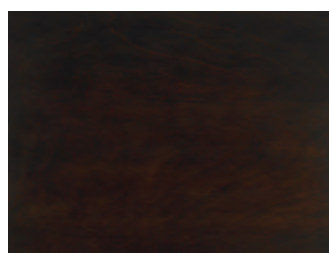
Emperor



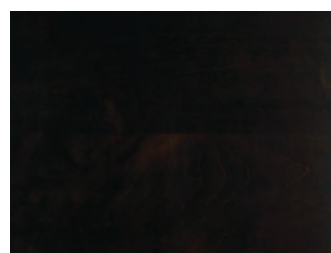
Mahogany



Distressed Mahogany



Espresso



Cordovan

PAINT



Antique Ivory

THE ELEMENTS AND IRREGULARITIES OF WOOD MAY RESULT IN A COLOR VARIATION WITHIN EACH PIECE AND FROM PIECE TO PIECE.

FINISHES

PREMIUM FINISHES

PAINTS



Gesso



Linen



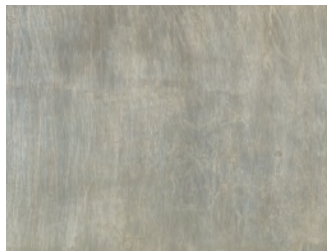
French Blue

MAJESTIC FINISHES

METALLIC PAINTS AND LEAFS



Platinum

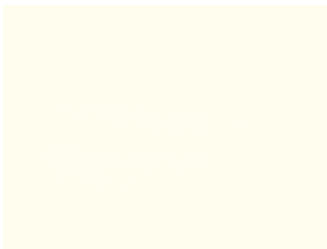


Antique Silver

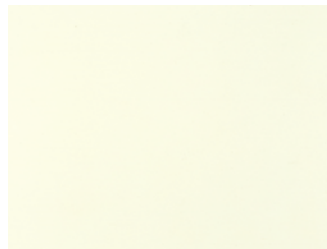


Antique Gold

HIGH GLOSS ENAMELS



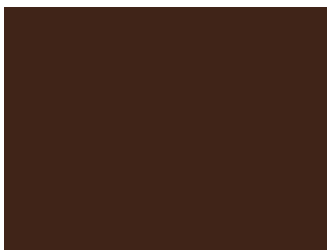
Cloud



Cream



Storm



Coffee



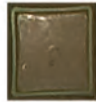
Jet



Scarlett

THE ELEMENTS AND IRREGULARITIES OF WOOD MAY RESULT IN A COLOR VARIATION WITHIN EACH PIECE AND FROM PIECE TO PIECE.

NAILHEADS



Antique Brass* Square Nailhead

*Not available on curved areas

SIZES: #9=3/8", #54=5/8", #52=3/4"

BRADS



SIZE: #8=8MM

PHOTOGRAPHY IS, AT BEST, A REPRESENTATION OF THE COLOR

TERMS & CONDITIONS

GUARANTEES:

All Lee Jofa frames are guaranteed for the life of the original owner under normal use.

TERMS OF PAYMENT:

- 50% deposit required before production will be initiated
- Balance due 10 days prior to shipment or ship date will be postponed until the balance is received.

PRICES:

- F.O.B. and are exclusive of freight and delivery
- Subject to change without notice

PRODUCTION:

Orders are not placed into production until all fabrics, trimmings and diagrams (if required) are received and fabrics are backed (if necessary), at the factory. COM must be able to be identified and connected to an order in order to process, sidemark to include Lee Jofa order number.

INVENTORY:

Lee Jofa Furniture strives to be in stock at all times and is not responsible for issues beyond its control.

DIMENSIONS:

Dimensions will vary within reason and will change depending on the fabric applied.

SHIPPING:

- Delivery only to a functional receiving dock
- Carrier must be specified
- Freight is collect unless prepaid as part of our prepaid delivery program
- Lee Jofa Furniture is not responsible for delivery delays beyond our control
- Orders will not be scheduled for pick up or shipment unless balance due is paid 10 days prior to the ship date

STORAGE:

Net \$50 per week after scheduled ship date.

CANCELLATIONS:

Cancellations are not accepted once the order has been received.

RETURNS:

No returns are allowed without prior written authorization from Lee Jofa.

REPAIRS:

- Please contact Lee Jofa at 1-800-648-5728 ext: 2485.
- Please provide a photo and a description to the Lee Jofa Furniture Department
- Payment for unauthorized repairs will not be accepted.

FREIGHT CLAIMS:

Lee Jofa Furniture ships F.O.B. and cannot be responsible for damages which occur in transit, storage or delivery.

For assistance in filing your freight claims, please contact the freight carrier.

ACKNOWLEDGEMENTS:

All orders are taken subject to acceptance by Lee Jofa Furniture and our formal acknowledgement stating the terms, correct prevailing prices and certain conditions of sale. It is the client's responsibility to ensure that the acknowledgement is correct.

STANDARD PACKING:

All Lee Jofa Furniture is packed to industry standard requirements.

FABRIC/TRIM

GRADING:

- All Lee Jofa and Kravet Fabrics that are suitable for upholstery are graded into all Lee Jofa Furniture.
- Some Lee Jofa fabrics are not suitable for use as upholstery. These fabrics are not "graded in." If such fabrics are still used as upholstery then they must be purchased separately and will be treated as a COM fabric.

APPLICATION:

Lee Jofa Fabrics are applied in a fully 4 way horizontal and vertical match based on an up the bolt direction. When fabric is less than width needed it will be French seamed. Please note that seams may be avoided by railroading your fabric. Please specify application direction of fabric on your order. In the absence of directions, Lee Jofa will use its best judgement in applying the fabric.

INSPECTION:

- All Lee Jofa Fabrics are inspected before they are shipped to the factory and again on receipt at the factory. If there is a defect we will correct immediately and advise the customer only if there is an issue affecting the order's timeliness.
- COM fabrics if pulled from production will be returned to the customer for replacement.

SUITABILITY:

- Fabrics not suitable for upholstery will not be guaranteed for appearance or durability.
- Lee Jofa cannot guarantee any fabric for wear or durability.

COM REPEAT CHART

Plaids: Add 10% after calculation
Stripes: Use the horizontal repeat

WIDTH	PLAIN	1-7"	8-13"	14-21	22-27"	OVER 27"
54	0%	10%	10%	25%	30%	40%
50-53	10%	30%	30%	40%	45%	55%
48-49	20%	30%	30%	40%	45%	55%
45-47	20%	70%	70%	80%	85%	105%
36-44	40%	70%	70%	80%	85%	105%

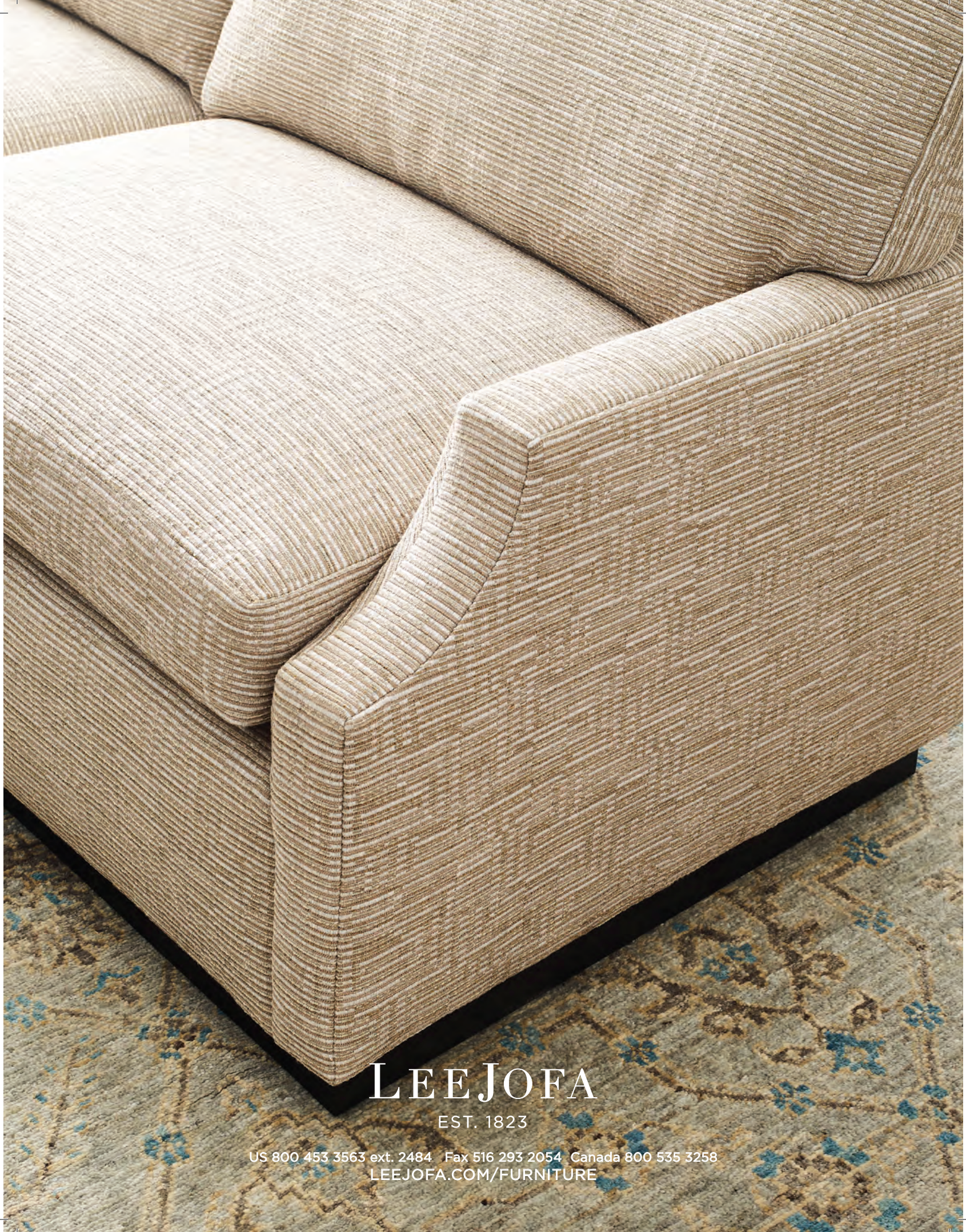
COM YARDAGE REQUIREMENTS:

Lee Jofa cuts and applies all fabric to match 4 ways. Yardage requirements are for 54" plain fabrics. For fabrics with a center motif - use 36" column. The above chart is at best a guide.

For the most accurate measurements please submit a full repeat sample and we will process our layout (non-refundable + plus 2 weeks).

PHOTOGRAPHY:

Images are meant to be a representation of the furniture frames. Actual product may vary based on chosen customization and fabric selection.



LEEJOFA

EST. 1823

US 800 453 3563 ext. 2484 Fax 516 293 2054 Canada 800 535 3258
LEEJOFA.COM/FURNITURE