

LODGE II COLLECTION



THE JOFA SINCE 1823



LODGE II COLLECTION

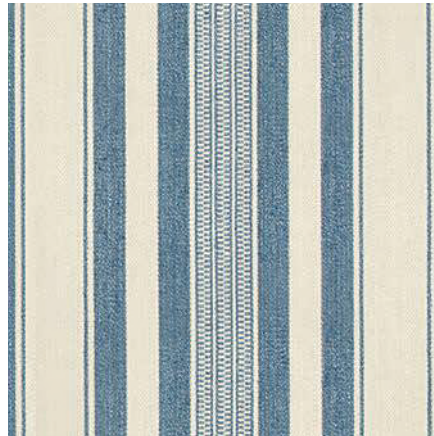


Lee Jofa's second Lodge Collection continues the story of picturesque designs that evoke the comfort and atmosphere of a woodland, mountain or lakefront cottage. Encompassing fine prints, textural wools, lush chenilles and dimensional embroideries, popular patterns are re-colored and several new patterns are introduced that add a modern, eclectic spirit. Lodge II wallcovering features the popular Mille Fleur in new colorations and three new wallpapers coordinating with Lodge II fabrics.

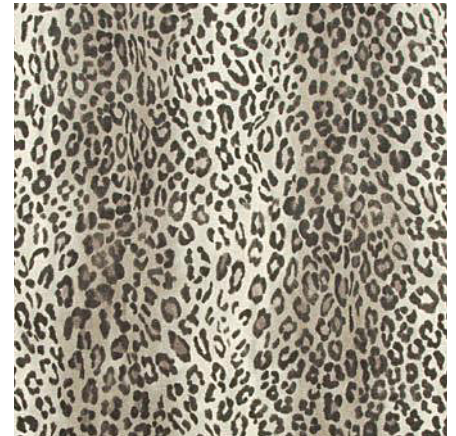
LODGE FABRICS



VERBIERE DIAMOND • DUSK/HAZE
2017130-155
Also Available • Leaf/Teal (533),
Mink/Ebony (688), Jade/Red (923)



KAILASH STRIPE • NAVY
2017129-50
Also Available • Stone (116), Red (19),
Tobacco (68)



CARSON LINEN • CHARCOAL
2017137-118
Also Available • Safari (166)



FANNIN PLAID • BLUE/NAVY
2017125-515
Also Available • Stone/Mink (116), Ruby/Navvy (519),
Cocoa/Ebony (688), Herb/Spice (930)



TIMBERLINE PRINT • NAVY
2017135-50
Also Available • Camel (16), Red (19),
Hunter (3), Brown (6), Black (8)



TRENT IKAT LINEN • LAKE
2017139-550



LEYLAND PRINT • BLUE/MULTI
2017133-5
Also Available • Emerald/Teal (135),
Berry/Forest (193), Tobacco (6)



BISTI VELVET • MULTI
2017124-549
Also Available • Stone/Wood (168),
Teal/Forest (536)



DINETAH WOOL • MULTI/SPICE
2017127-539
Also Available • Natural/Noir (168),
Juniper/Oak (653)



SUMTER TOILE • LAKE
2017134-5

Also Available • Berry (19), Hunter (3),
Charcoal (8)



CARIBOU EMBROIDERY • NAVY
2017123-50

Also Available • Forest Green (30), Black (8)



ALLADALE EMBROIDERY • BLUE
2017131-5

Also Available • Cream (101), Red (19),
Jade (23)



TOCCOA PAISLEY • TEAL/NAVY
2017126-515

Also Available • Mink/Ebony (168),
Jade/Navy (503), Ruby/Blue (519)



EPPING QUILT • BLUE
2017140-5

Also Available • Grey (11), Beige (16),
Oak (68)



ANTLERS • NAVY
2009143-50

Also Available • Grey (11), Hunter (3)



TRENT IKAT VELVET • RUBY/GOLD
2017138-194

Also Available • Spice/Blue (125),
Teal/Green (335), Sepia/Grey (68)



CARSON VELVET • DESERT
2017136-116



BLUE RIDGE WOOL • SPICE
2017122-19

Also Available • Steel (11), Natural (16),
Graphite (18), Forest (30), Navy (50),
Lagoon (513), Cognac (68)

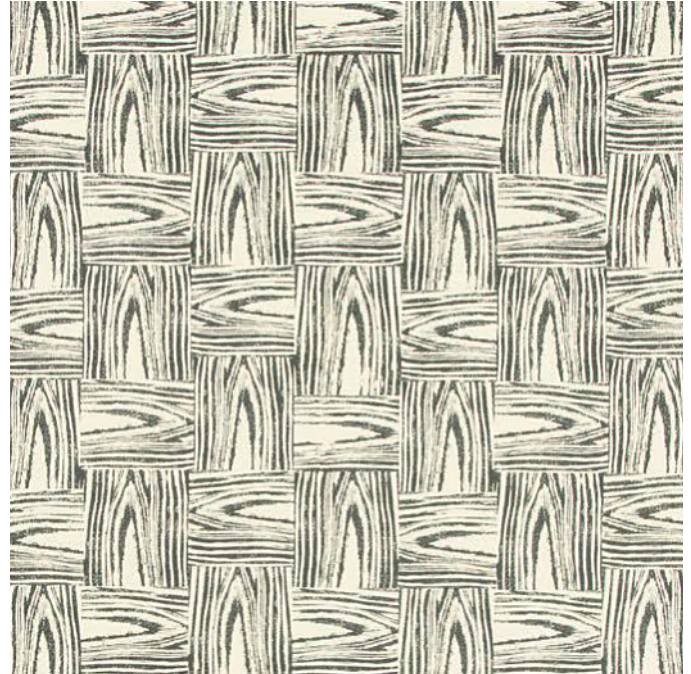
LODGE WALLCOVERINGS



SUMTER PAPER • CHARCOAL

P2017103-8

Also Available • Berry (19), Hunter (3), Lake (5)



TIMBERLINE PAPER • BLACK

P2017101-8

Also Available • Camel (16), Red (19), Hunter (3),
Navy (50), Brown (6)



MILLE FLEUR WP • SILVER

P2017104-114

Also Available • Navy (50), Berry (97)



ANTLERS PAPER • GREY

P2017102-11

Also Available • Teal (13), Red (19), Hunter (3), Navy (50)





FRONT COVER WALLPAPER: ANTLERS PAPER IN NAVY P2017102-50; FURNITURE: ANNABELLE CHAIR H4705-20 IN FANNIN PLAID, COLOR RUBY/NAVY 2017125-519; PILLOW: ANTLERS IN NAVY 2009143-50; TABLE: BOTTOMS-UP DRINKS TABLE MARBLE FROM BUNNY WILLIAMS HOME BLH1054; ARTWORK BY JUDITH GODWIN, COURTESY OF BERRY CAMPBELL; CARPET: RICCCARTON IN FAWN. **PAGE 2** LEYLAND PRINT IN BERRY/FOREST 2017133-193 **PAGE 3** FURNITURE: CAPRICE CHAIR H4708-20 IN VERBIER DIAMOND IN JADE/RED 2017130-923; PILLOW: ALLADALE EMBROIDERY IN RED 2017131-19; DRAPERY PANELS: LEYLAND PRINT IN BERRY/FOREST 2017133-193; LICHEN LAMP FROM BUNNY WILLIAMS HOME BLH1280; TABLE: AVELINA ROUND ETAGERE FROM MACRAE 151-R; CARPET: HYDEN IN DESERT CL-100354. **PAGE 7** WALLPAPER: TIMBERLINE PAPER IN BLACK P2017101-8; PILLOWS (BACK TO FRONT): BISTI VELVET IN STONE/WOOD 2017124-168; SUMTER TOILE IN CHARCOAL 2017134-8; TOCCOA PAISLEY IN MINK/EBONY 2017126-168; COVERLET: EPPING QUILT IN GREY 2017140-11, TRIM: ETOSHA TAPE IN DOVE TL10166-11; ZEBRA LAMP FROM BUNNY WILLIAMS HOME BLH1169; TABLE: ISLAY SIDE TABLE FROM MACRAE 155. **BACK COVER** FABRIC (LEFT TO RIGHT): BISTI VELVET IN TEAL/FOREST 2017124-536; VERBIER DIAMOND IN LEAF/TEAL 2017130-533; LEYLAND PRINT IN EMERALD/TEAL 2017133-135.