

# Baker Lifestyle

## HOMES&GARDENS II



Fabrics and Wallpapers

# Homes & Gardens Collection II

This eclectic collection takes its inspiration from global travel, encompassing interiors, textiles and colour.

## Global Outlook

For centuries, merchants travelling the Spice Route returned from their travels with a wealth of inspiration – from shimmering silks and sumptuous weaves to rich colour palettes and exotic motifs that the British embraced and made their own. It is this same spirit that gives a distinctive flavour to many of the designs in the new Homes & Gardens Collection. With vibrant, unexpected combinations of oranges, ochres and rich earth tones, the stunning new fabrics and wallpapers exude the warmth and life that make them ideal for creating a classic look with an exotic twist.

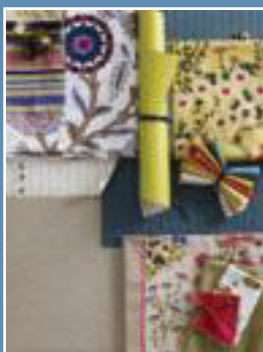
## Scandinavian Soul

The work of the 19th-century Swedish artist Carl Larsson expresses how life in Sweden and Norway has long been firmly focused on the home. Maybe it's the short days and long winters that have given Scandinavia's inhabitants such an impressive knack for creating homes where everyone would wish to spend time. This stylish look is inspired by the simple motifs, clean lines and crisp colour combinations that characterise Scandinavian design. It is a wonderfully versatile style that sits as happily within a sleek, contemporary environment as it does in a country cottage.

## Miami Mix

What makes America so seductive to visitors is the wonderful contrasts it offers – geographical, ethnic and architectural. Miami, in particular, is a melting pot of influences and this is reflected in its vibrant style where motifs, scale and colours clash with all the vigour of a jazz band. In this exciting look blues, limes and greys characterise the city and create a feel that is as lively as the mix of saxophone, piano, trumpet and double bass.

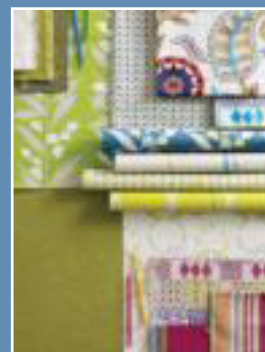
Global Outlook



Scandinavian Soul



Miami Mix







Atticus, Nara Plain, Timaru, Bell Flower, Madurai.



Mallow Stripe, Atticus, Nara Plain.



Treppen.



Nara Plain, Bell Flower, Madurai.





# Scandinavian Soul

Simple motifs and clean  
lines matched by crisp  
colour combinations  
characterising  
Scandinavian design.













Kalmar, Kansai Strie, Skane, Tretten.



Coffee Bean.

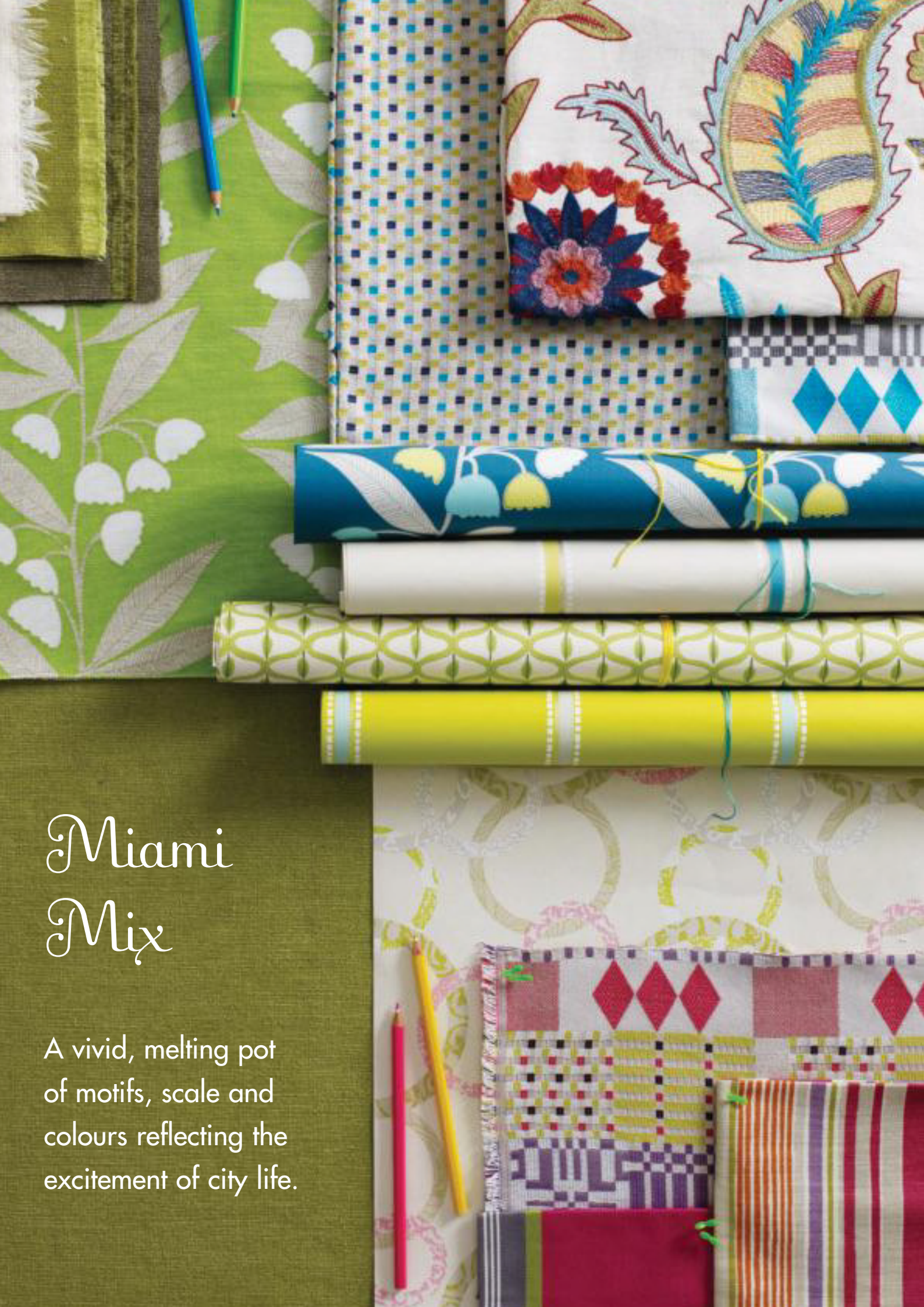


Bell Flower.



# Miami Mix

A vivid, melting pot of motifs, scale and colours reflecting the excitement of city life.







Ming, Zinnia, Indora Stripe, Tretten, Soren Stripe.





Ming, Zinnia, Nara Plain, Indora Stripe, Bell Flower, Tretten, Atticus.





April Showers.



Timaru, Nara Plain.



Zinnia, Bell Flower, Indora Stripe.





Tasie Stripe, Timaru.



Bell Flower.



Tasie Stripe, Mallow Stripe.



Madurai.









# Global Outlook

Vibrant, unexpected groups of rich hues and exotic motifs from the Middle East and beyond.















# Homes & Gardens Collection II

## FABRICS



### ARADY

**Fine stitched sprig pattern.**

Available in four colourways, including PF50352/2 (shown), bamboo/cotton mix, 128cm wide.



### ATTICUS

**Printed patchwork pattern.**

Available in five colourways, including PP50362/2 (shown), linen/cotton mix, 137cm wide.



### BELL FLOWER

**Smart stylish botanical pattern.**

Available in four colourways, including PP50361/3 (shown), linen/cotton, 137cm wide.



### INDORA STRIPE

**Bold bands of strong colour.**

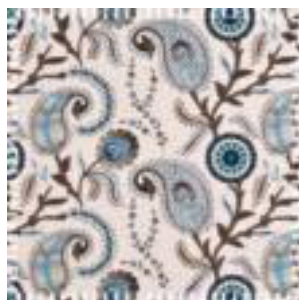
Available in six colourways, including PF50349/1 (shown), cotton/viscose mix, 137cm wide.



### MALLOW STRIPE

**Varying widths in toning hues.**

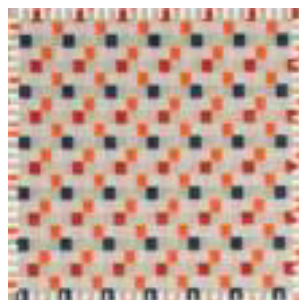
Available in six colourways, including PP50360/1 (shown), linen/cotton mix, 137cm wide.



### NARA

**Elaborate paisley floral mix.**

Available in five colourways, including PF50351/4 (shown), cotton/polyester mix, 127cm wide.



### SKANE

**Small interwoven squares.**

Available in six colourways, including PF50347/1 (shown), cotton/viscose mix, 137cm wide.



### SOREN STRIPE

**Distinctive colourful dotted lines.**

Available in six colourways, including PF50350/2 (shown), cotton/viscose mix, 137cm wide.

### NARA PLAIN

**Soft cotton upholstery weight fabric.**

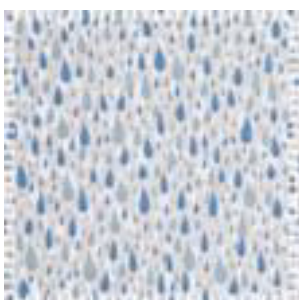
Available in 17 colourways, recycled cotton, 137cm wide.

### KANSAI STRIE

**Plain with stria effect.**

Available in nine colourways, recycled cotton, 137cm wide.

## WALLPAPERS



### APRIL SHOWERS

**Small, subtle raindrop pattern.**

Available in five colourways, including PW78015/2 (shown), spongeable.



### BELL FLOWER

**Trailing floral stripe design.**

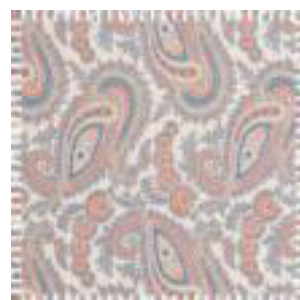
Available in eight colourways, including PW78020/3 (shown), spongeable.



### COFFEE BEAN

**Small intricate all-over pattern.**

Available in eight colourways, including PW78021/8 (shown), spongeable.



### KATHAK PAISLEY

**Rich Eastern-Inspired paisley.**

Available in four colourways, including PW78018/3 (shown), spongeable.



## WHERE TO FIND US

### AUSTRALIA

**Elliott Clarke**

Tel: +61 1300 355 468

E-mail: [info@elliottclarke.com.au](mailto:info@elliottclarke.com.au)

### BELGIUM

**Furnitex Agenturen bvba**

Tel: +32 1465 2880

E-mail: [info@furnitex.be](mailto:info@furnitex.be)

### CANADA

**Lee Jofa Inc**

Tel: +1 800 535 3258

E-mail: [cust.service@leejofa.com](mailto:cust.service@leejofa.com)

### DENMARK

**B. Right Interiors**

Tel: +45 396 11171

E-mail: [b-right@tdcadsl.dk](mailto:b-right@tdcadsl.dk)

### FINLAND

**Oy Naccanil AB**

Tel: +35 810 321 3580

E-mail: [info@naccanil.fi](mailto:info@naccanil.fi)

### FRANCE

**Paris Showroom**

Tel: +33 1 44 55 02 50

E-mail: [paris@brunschwig.com](mailto:paris@brunschwig.com)

### GERMANY & AUSTRIA

**Hahne & Schönberg GmbH**

Tel: +49 89 54 27730

E-mail: [kontakt@hs-stoffe.de](mailto:kontakt@hs-stoffe.de)

### ITALY

**Flortex Textile**

Tel: +39 0331 593350

E-mail: [sales@flortextile.it](mailto:sales@flortextile.it)

### MIDDLE EAST

**Rubelli / Sahco**

Tel: +971 4332 9197

E-mail: [office@rubellisahco.ae](mailto:office@rubellisahco.ae)

### NETHERLANDS

**Mischa de Vries**

Tel: +31 (0) 70 3693255

E-mail: [info@mischadevries.nl](mailto:info@mischadevries.nl)

### NEW ZEALAND

**Warwick Fabrics**

Tel: +64 (0) 9 477 3080

E-mail: [info@warwick.co.nz](mailto:info@warwick.co.nz)

### NORWAY

**Poesi Interioragentur**

Tel: +47 22 12 8180

E-mail: [post@poesiinterior.no](mailto:post@poesiinterior.no)

### RUSSIA

**Kimberley Expertise**

Tel: +7 495 690 55 98

E-mail: [op@kimberleyexpertise.com](mailto:op@kimberleyexpertise.com)

### SPAIN & PORTUGAL

**Gaston y Daniela SA**

Tel: +34 91 485 2603

E-mail: [import@gastonydaniela.com](mailto:import@gastonydaniela.com)

### SWEDEN

**A B Stiltyger**

Tel: +46 8 660 8630

E-mail: [ab.stiltyger@telia.com](mailto:ab.stiltyger@telia.com)

### SWITZERLAND

**Raphaël Vadnaï**

Tel: +41 21 728 36 27

E-mail: [vadnaïtex@hispeed.ch](mailto:vadnaïtex@hispeed.ch)

### SOUTH AFRICA

**St. Leger & Viney (Pty) Ltd.**

Tel: +27 11 444 6722

E-mail: [micheler@stleger.co.za](mailto:micheler@stleger.co.za)

### UK

**London Showroom**

Tel: +44 (0) 207 351 7760

E-mail: [sales@gpjbaker.com](mailto:sales@gpjbaker.com)

### USA

**Lee Jofa Inc**

Tel: +1 888 533 5632

E-mail: [customer.service@leejofa.com](mailto:customer.service@leejofa.com)



### KALMAR

**Lively graphic composition.**

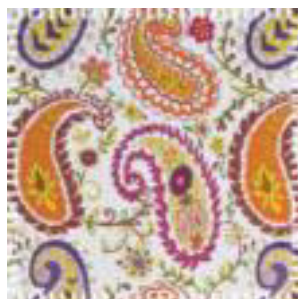
Available in six colourways, including PF50346/1 (shown), cotton/viscose mix, 137cm wide



### MADURAI

**Embroidered and printed Stripes.**

Available in five colourways, including PP50355/3 (shown), cotton, 130cm wide.



### MAKASAR

**Large embroidered paisley motif.**

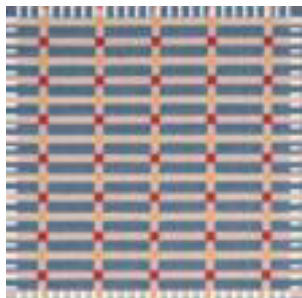
Available in four colourways, including PF50358/3 (shown), cotton/viscose mix, 126cm wide.



### TIMARU

**Delicate spots with soft edges.**

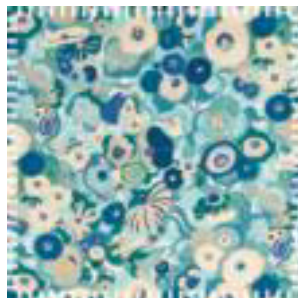
Available in four colourways, including PF50363/2 (shown), cotton, 126cm wide.



### TRETEN

**Neat pattern of narrow bars.**

Available in six colourways, including PF50348/5 (shown), cotton/viscose mix, 137cm wide.



### ZINNIA

**Free flowing floral design.**

Available in four colourways, including PP50359/4 (shown), linen/cotton, 137cm wide.



### MING

**Two tone crackle-glaze design.**

Available in nine colourways, including PW78017/2 (shown), spongeable.



### ROUNDEL

**Contemporary geometric rings.**

Available in six colourways, including PW78019/5 (shown), spongeable.



### TASIE STRIPE

**Elegant wide and narrow banding.**

Available in nine colourways, including PW78016/2 (shown), spongeable.





# Baker Lifestyle

## HOMES&GARDENS II

### UK

+44 (0) 1202 266 750 (UK)  
+44 (0) 1202 266 996 (Export)  
[sales@bakerlifestyle.co.uk](mailto:sales@bakerlifestyle.co.uk)  
[www.bakerlifestyle.co.uk](http://www.bakerlifestyle.co.uk)

### France

+33 1 44 55 02 50  
[paris@brunschwig.com](mailto:paris@brunschwig.com)  
[www.brunschwig.com](http://www.brunschwig.com)

### USA

+1 888 533 5632  
[customer.service@leejofa.com](mailto:customer.service@leejofa.com)  
[www.leejofa.com](http://www.leejofa.com)