

# BLITHFIELD

AT LEE JOFA



# THE LANGHAM COLLECTION

The Langham Collection expands on the Blithfield tradition of printed fabrics with three beautiful wovens. Albemarle and Lowell are versatile small scale designs based on archival textures. Launceton Stripe is a timeless woven stripe based on a 19th century silk document. Hadleigh, a whimsical printed floral design and Saybrook, a more contemporary printed horizontal stripe complete the collection. Established in 1997, Blithfield designs and manufactures fabrics that bring contemporary inspiration to archival documents. A full range of custom prints is also available. Visit [www.blithfield.co.uk](http://www.blithfield.co.uk) to learn more.



HADLEIGH IN PINK  
BFC-3633.7



HADLEIGH IN BLUE  
BFC-3633.5



SAYBROOK IN ORANGE  
BFC-3634.124



SAYBROOK IN BLUE  
BFC-3634.513



SAYBROOK IN BROWN  
BFC-3634.616



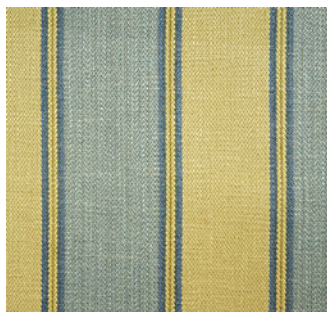
LOWELL IN CELADON  
BFC-3635.23



LAUNCETON STRIPE IN ROSEGREEN  
BFC-3636.73



LAUNCETON STRIPE IN OLIVEAQUA  
BFC-3636.303



LAUNCETON STRIPE IN BLUE GREEN  
BFC-3636.513



LAUNCETON STRIPE IN ORANGE  
BFC-3636.12



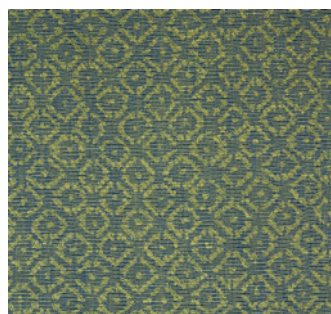
ALBEMARLE IN TANGERINE  
BFC-3637.12



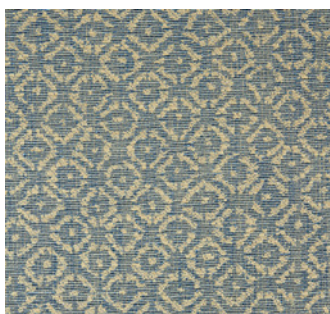
ALBEMARLE IN GREEN  
BFC-3637.3



ALBEMARLE IN BEIGE  
BFC-3637.16



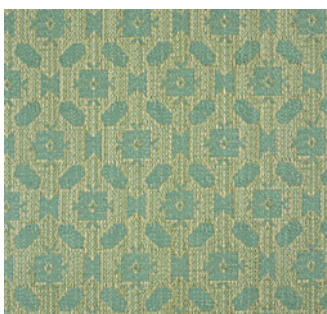
ALBEMARLE IN BLUEGREEN  
BFC-3637.513



ALBEMARLE IN BLUE  
BFC-3637.5



ALBEMARLE IN AQUA  
BFC-3637.13



LOWELL IN AQUA  
BFC-3635.513



LOWELL IN BLUEGREEN  
BFC-3635.53



LOWELL IN LIME  
BFC-3635.30



LOWELL IN SILVER  
BFC-3635.11



LOWELL IN TAUPESILVER  
BFC-3635.611



LOWELL IN AUBERGINE  
BFC-3635.103

