

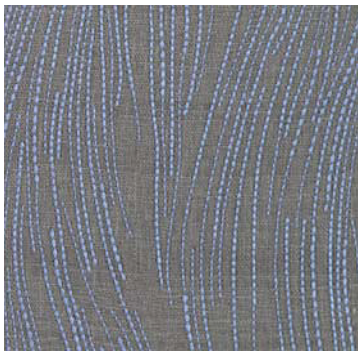
kelly wearstler

groundworks<sup>AT LEE JOFA</sup>





MALA IN LAKE  
GWF-3103-513



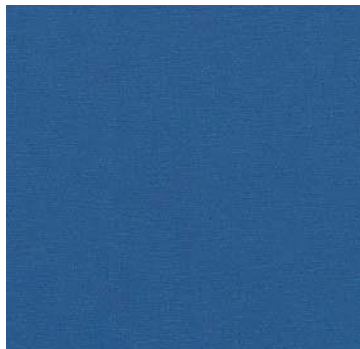
CURRENTS SILK IN SLATE/GREY  
GWF-3112-511



BENGAL BAZAAR IN GREY/INDIGO  
GWF-2811-511



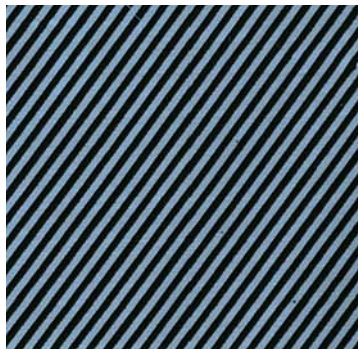
AGATE IN SLATE/LINEN  
GWF-3102-516



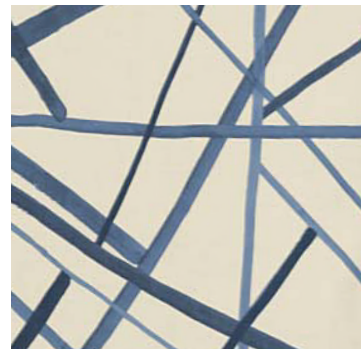
SUNBLEACHED IN INDIGO  
GWF-3110-550



AGATE IN LAKE/MINK  
GWF-3102-138



OBLIQUE IN SLATE/GRAPHITE  
GWF-3050-511



CHANNELS IN PERIWINKLE/OAT  
GWF-3101-516



WATER STRIPE EMB. IN JUNIPER/LAKE  
GWF-3100-313



FELINE IN LAKE/SLATE  
GWF-3106-313



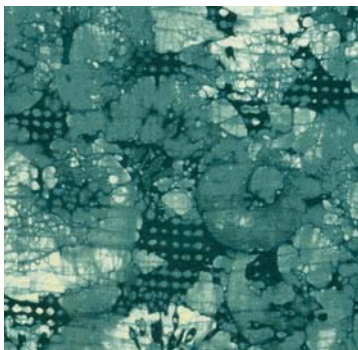
SONOMA IN LAKE  
GWF-3109-313



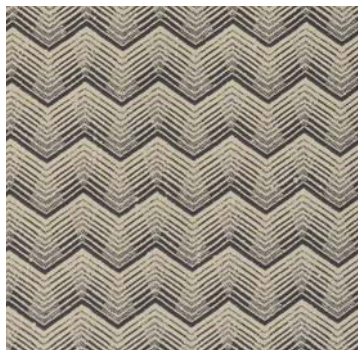
OBLIQUE IN LAKE/LINEN  
GWF-3050-311



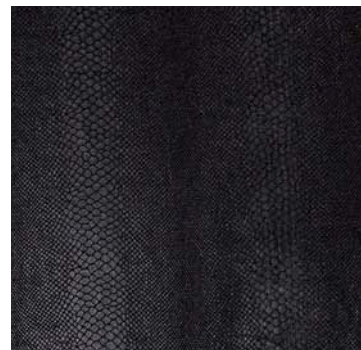
SUNBLEACHED IN LAKE  
GWF-3110-313



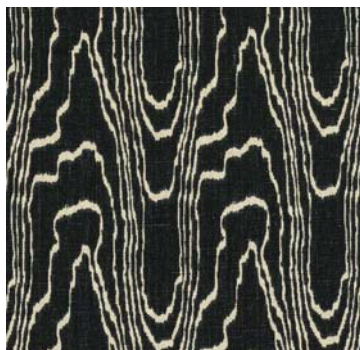
MINERAL IN JUNIPER/LAKE  
GWF-3104-3



TEMPEST IN TRUFFLE  
GWF-3111-816



SERPENT IN EBONY  
GWF-3107-8



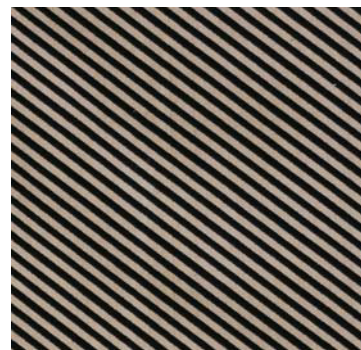
AGATE IN EBONY/BEIGE  
GWF-3102-816



SONOMA IN EBONY  
GWF-3109-8

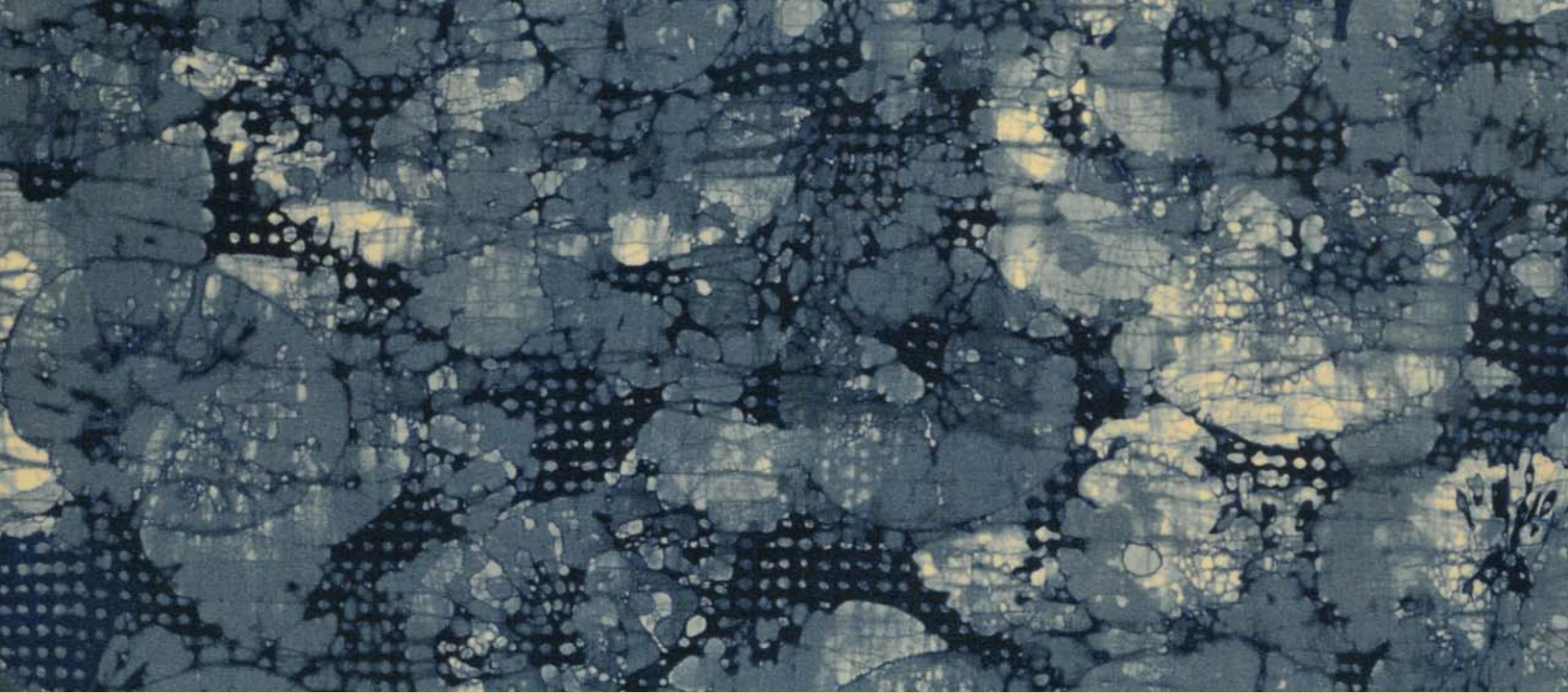


FELINE IN EBONY/BEIGE  
GWF-3106-816

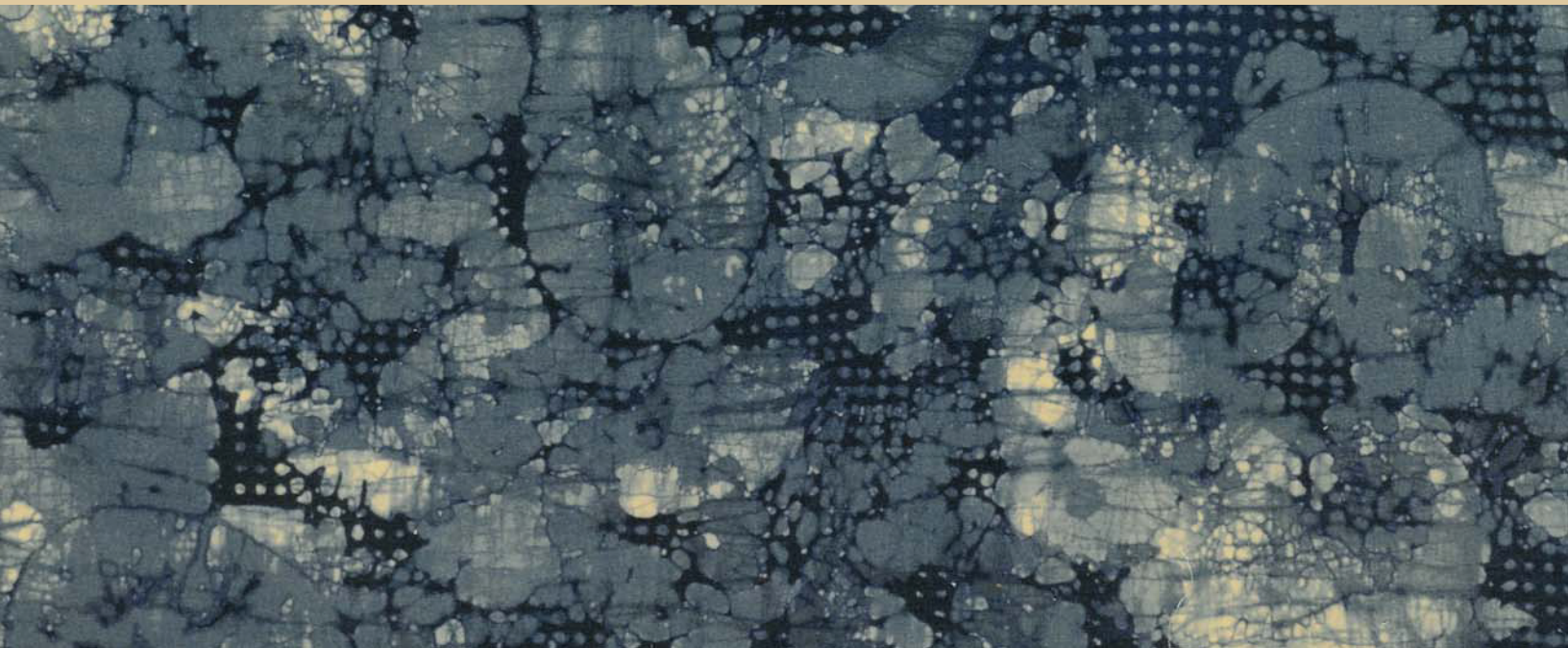


OBLIQUE IN BEIGE/NOIR  
GWF-3050-816





In her second collaboration with Groundworks, Kelly Wearstler has created a vibrant and inspiring fabric collection that combines her love for natural materials, graphic patterns and unique colors. The collection features organic and textural designs that are quietly elegant, as well as the bold prints that have become a Kelly Wearstler signature. All are available in a palette that Kelly uses throughout her interior design and fashion projects - black and white, periwinkle blue, pistachio green, smoky aubergine and coral, citrine yellow and warm charcoal grey and ivory.







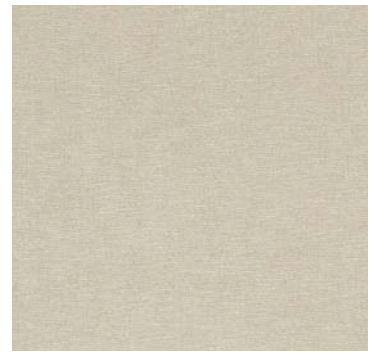
AGATE IN PEARL/BEIGE  
GWF-3102-116



TEMPEST IN LINEN  
GWF-3111-616



CHANNELS IN TAUPE/IVORY  
GWF-3101-616



SUNBLEACHED IN LINEN  
GWF-3110-616



BARCELO IN TAUPE  
GWF-3105-611



SONOMA IN MUSHROOM  
GWF-3109-616



AGATE IN TAUPE/GOLD  
GWF-3102-411



SONOMA IN STRAW  
GWF-3109-416



BENGAL BAZAAR IN MUSHROOM/STRAW  
GWF-2811-614



TEMPEST IN GREY  
GWF-3111-611



OBLIQUE IN STRAW/GREY  
GWF-3050-411



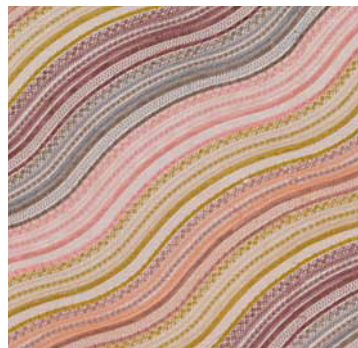
BARCELO IN ALABASTER  
GWF-3105-116



MALA IN RAISIN  
GWF-3103-911



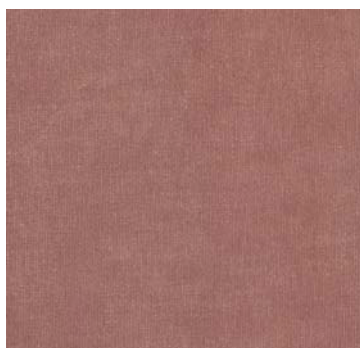
BENGAL BAZAAR IN GRAPHITE/ROSE  
GWF-2811-711



WATER STRIPE EMB. IN RAISIN/ROSE  
GWF-3100-916



FELINE IN GRAPHITE/ROSE  
GWF-3106-711



SUNBLEACHED IN DUSTY ROSE  
GWF-3110-712



CHANNELS IN PLUM/OATMEAL  
GWF-3101-911



CURRENTS SILK IN ROSE/LINEN  
GWF-3112-716



BARCELO IN TRUFFLE  
GWF-3105-68







For access to our digital library, please visit:  
[leejofa.com/digitalibrary](http://leejofa.com/digitalibrary)

LEE JOFA®

U.S. 800 453 3563 CANADA 800 535 3258 UK 44 (0)1202 266700 LEEJOFA.COM

**Front/Back Cover:** Background fabric: Sunbleached in Ebony GWF-3110-8 Fabric clockwise from top left: Serpent in Ebony GWF-3107-8, Mineral in Ebony/Taupe GWF-3104-811, Currents Linen in Linen/Gold GWF-3113-416, Tempest in Truffle GWF-3111-816, Channels in Ebony/Ivory GWF-3101-816, Currents Silk in Ebony/Oatmeal GWF-3112-816, Sonoma in Ebony GWF-3109-8, Sonoma in Oatmeal GWF-3109-116, Agate in Ebony/Beige GWF-3102-816, Currents Linen in Ebony/Gold GWF-3113-48, Sunbleached in Ebony GWF-3110-8, Feline in Ebony/Beige GWF-3106-816, Sunbleached in Linen GWF-3110-616, Oblique in Beige/Noir GWF-3050-816, Patina Linen in Gold GWF-3115-4; **Inside Flap:** **Pillow Stack:** Feline in Lake/Slate GWF-3106-313, Sonoma in Lake GWF-3109-313, Agate in Lake/Mink GWF-3102-138, Oblique in Lake/Linen GWF-3050-311, Sunbleached in Lake GWF-3110-313, Mineral in Juniper/Lake GWF-3104-3; **Top:** Channels in Taupe/Ivory GWF-3101-616, Patina Linen in Gold GWF-3115-4, Barcelo in Truffle GWF-3105-68, Serpent Natural in Linen GWF-3114-616, Sonoma in Straw GWF-3109-416, Agate in Taupe/Gold GWF-3102-411, Oblique in Straw/Grey GWF-3050-411, Barcelo in Alabaster GWF-3105-116, Currents Linen in Linen/Gold GWF-3113-416; **Middle:** Channels in Ebony/Ivory GWF-3101-816; **Bottom:** Mala in Lake GWF-3103-513, Agate in Slate/Linen GWF-3102-516, Sonoma in Cornflower GWF-3109-510, Barcelo in Taupe GWF-3105-611, Oblique in Slate/Graphite GWF-3050-511, Channels in Periwinkle/Oat GWF-3101-516, Sunbleached in Linen GWF-3110-616, Mineral in Indigo/Slate GWF-3104-511, Sunbleached in Graphite GWF-3110-11; **Inside Middle Panel:** Mineral in Indigo/Slate GWF-3104-511