



ITHAKA

LEERJOFA
SINCE 1823

ITHAKA

The Ithaka collection from Lee Jofa is inspired by the 1912 poem "Ithaka" by Constantine Cavafy that celebrates the enjoyment of life's journey, and the soul of the traveler. The collection includes two warp-printed ikats, woven in the traditional style in silk and natural yarns. A wood-blocked chintz has been adapted from an early 19th century trade cloth, and a richly colored block printed linen reinvents the large-scale 18th century suzani embroideries of Uzbekistan. The Ithaka collection brings together unique designs with centuries-old printing and weaving techniques to create sophisticated fabrics for discerning interiors.



Indian Blocks in Blues
2013139-515



Khalat Ikat in Sky/Indigo
2013138-515



Turkistan in Blues
2013142-515



Khiva Ikat in Blue/Green
2013140-5313



Khalat Ikat in Aqua Celadon
2013138-313



Turkistan in Ocean/Teal
2013142-513



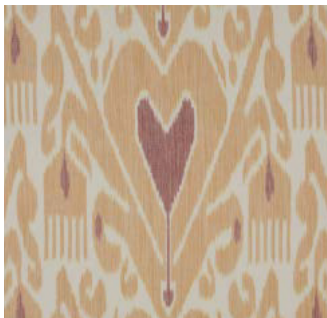
Khiva Ikat in Sepia
2013140-611



Khalat Ikat in Ebony/Pewter
2013138-811



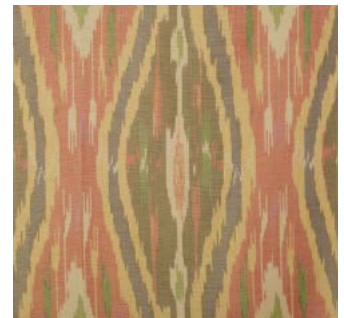
Indian Blocks in Pewter
2013139-816



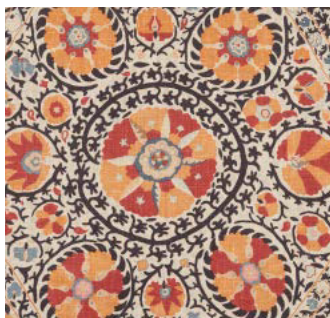
Khalat Ikat in Gold/Ruby
2013138-409



Indian Blocks in Amber
2013139-495



Khiva Ikat in Multi
2013140-954



Turkistan in Spice/Ebony
2013142-822



Indian Blocks in Rose
2013139-915



Turkistan in Red/Green
2013142-319



Indian Blocks in Multi
2013139-549

*Turkistan also available in Henna/Indigo 2013142-549. **Right Panel:** Loretta Sofa H4518-6, Fabric: Turkistan in Henna/Indigo 2013142-549, Trim: Easy Border in Oxblood TL10121-9; Bunny Williams Home Saffron Lamp BWH1168; Pillows: Khalat Ikat in Gold/Ruby 2013138-409, Trim: Elford Cord in Wine/Blue TL10029-945; Romeo Velvet in Soleil 2007193-24, Trim: Classic Key Medium in Maroon TL10114-916. Painting by Eric Dever; Courtesy of Berry Campbell, New York. **Front Cover:** Robert Saddle Bench H3815-42, Fabric: Romeo Velvet in Sapphire 2007193-515; Drapery: Indian Blocks in Blues 2013139-515; Pillows: Khalat Ikat in Sky/Indigo 2013138-515, Trim: Strie Cord in Cornflower TL10094-5; Indian Blocks in Blues 2013139-515, Trim: Hance in Blue TL10081-515; Turkistan in Blues 2013142-515, Trim: Perandor Cut Brush Fringe in Blue TL10015-515. Painting by Eric Dever; Courtesy of Berry Campbell, New York. **Back Cover:** Leeds Chair H4311-20, Fabric: Khiva Ikat in Multi 2013140-954, Pillow: Romeo Velvet in Soleil 2007193-24, Trim: Classic Key Medium in Maroon TL10114-916.



