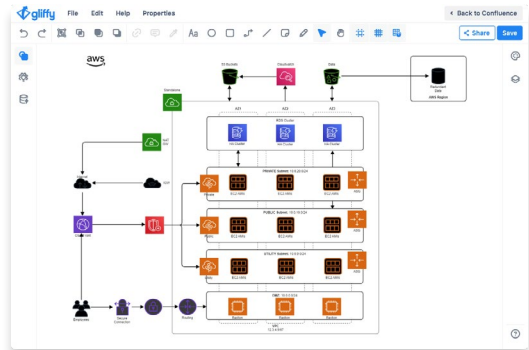




Convert Your Diagram Library from draw.io to Gliffy in Minutes

New in Confluence Data Center: Mass-convert your entire library of draw.io diagrams to Gliffy diagrams with 98% shape accuracy,* making switching tools faster and easier than ever.



How to Move Your draw.io Diagrams to Gliffy

Only users with Confluence Administrative privileges can mass-convert draw.io diagrams to Gliffy diagrams. This functionality is available in Confluence's administrative panel.

Contact an Atlassian Solutions Partner for diagram conversion testing and enablement sessions.

Why Switch to Gliffy?

- We're focused on one thing only: diagramming in Confluence. We won't use our customer data to sell additional Atlassian apps and services.
- Our technical focus makes us the ideal partner for IT, software, and operations teams working in the Atlassian ecosystem. We're committed to developing features that help our users visualize highly complex information easily and efficiently.
- We provide the framework enterprise teams need to succeed. Our average install size is over 3 times larger than draw.io's, and we've earned recognition for our ease of use and high-quality support based on reviews from our users on G2.

See Gliffy in Action

To see firsthand how easy it is to convert your draw.io diagrams to Gliffy, watch our draw.io converter tutorial at: gliffy.com/resources/convert-drawio-diagrams-to-gliffy

Want to see our advanced diagramming features and learn more about switching to Gliffy? Schedule a custom demo with our Solutions Engineer, Justine MacLean (justine.maclea@perforce.com) or reach out to our Partner Manager, Andy Bryl (abryl@perforce.com).

*81% of draw.io shapes will remain exactly as is when converted to Gliffy, and 98% of draw.io shapes are either exactly the same in Gliffy or have a similar equivalent.