



Laerdal

helping save lives



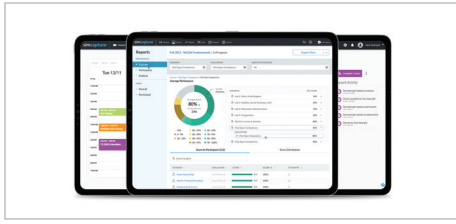
SimCapture *Enterprise* + *CCM Tier*

A center management solution for clinical exams and high-fidelity simulation

SimCapture is a cloud-based solution that helps healthcare institutions deliver high-quality training, education, and quality improvement programs. Allowing administrators to effectively manage, record, and access simulation training anywhere, at anytime, with access to valuable data insights, SimCapture generates reports and statistics on performance and trends to track usage, KPIs and learning outcomes.

SimCapture Enterprise + CCM (Central Control Module) is our most advanced software tier, ideal for Standardized Patient programs and Inter-disciplinary Simulation Centers running OSCEs and clinical exams that require large-scale workflow automation. SimCapture will centrally manage multiple bays, rooms and floors from a single control interface to streamline and automate while simultaneously tracking performance and simulation center usage.

SimCapture Enterprise + CCM



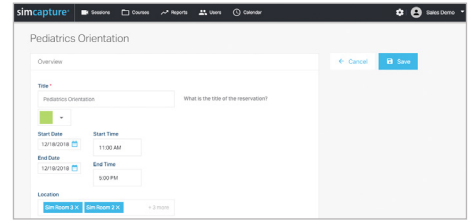
Securely access and store data in the cloud

SimCapture is a reliable, 100% cloud-based solution that can be accessed on-site, in-situ or remotely. Learners can access their sessions for debriefing and other training right from their mobile devices - anywhere, anytime.



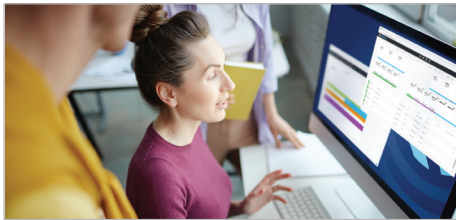
Improve outcomes with robust insights

SimCapture creates data that is meaningful and actionable. The dashboards are ideal for research or learning needs analysis at the individual and course level. Utilize consistent and data-driven feedback to impact quality outcomes in the clinical and education settings.



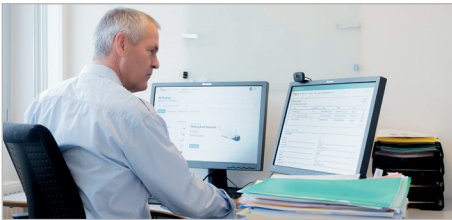
Streamline clinical exam management

Preparing, organizing, and delivering clinical exams requires a system that integrates all facets of your program. SimCapture provides the foundation necessary to automate your workflows for an efficient operational experience and facilitates the assessment of your program outcomes.



Easily schedule, share and collaborate

Through our effortless scheduling tool, instructors can schedule their own sessions, rooms and simulators. Instructors build, share and collaborate on curriculum with their colleagues and administrators. SimCapture integrates with most Learning Management Systems, making the transfer of course and learner data a breeze.



Maximize sim center efficiencies

Eliminate time-consuming manual inventory processes. In one single interface, benefit from user-friendly capital and consumable reports with constantly updated data. Manage your inventory, predict your future needs and budget your assets effectively.



Conduct and observe virtual OSCEs

The remote OSCE functionality works directly within the SimCapture platform, enabling you to run high stakes clinical exams remotely, without the requirement for any 3rd party software or subscriptions. Integrate Standardized Patient (SP) evaluations, learner patient notes, and simulated Electronic Medical Record (EMR) documentation in the exam workflow for seamless debriefing and reporting.

SimCapture - Enterprise + CCM tier features

- Remote OSCE module securely connects Learners and SPs without the need for an external video conferencing tool for remote training
- Management of many rooms or floors at once
- Automated clinical exam flows and extensive reports
- Utilize integrated and customizable EMR
- Learner driven features and checklists for peer-to-peer and self-recorded training
- Synchronized capture of multiple camera angles
- Simulator data capture and visualization
- Medical device capture (EKG, Ultrasound, EMR)
- Learner and faculty tracking and portfolios
- Center sign-in - directing and tracking users
- Video annotation and session self-reflection
- Debrief from anywhere using just a browser
- Learner, faculty and facility usage reports
- Robust suite of assessment and course performance reports
- Customizable scenarios, roles and permissions
- Inventory management features
- Integration with Learning Management Systems
- Secure, mobile-friendly and cloud-based
- Flexible and scalable- one room or many
- Best-in-class training and support
- Single sign-on module

Services

We are committed to helping our users and instructors gain the knowledge and insights they need to best use our SimCapture solution. That's why we offer an extensive Implementation Service package, including Technical Installation and Educational Services. Our Educational Services offer both on-site instructor-led courses as well as virtual sessions to ensure your training is at your convenience.

For more information, visit Laerdal.com/SimCapture

©2024 Laerdal Medical. All rights reserved. 2405-1370843184



Laerdal
helping save lives