



Laerdal
helping save lives

**limbs&
things**



**DESIGN
AWARD
2025**

MamaAnne[®]

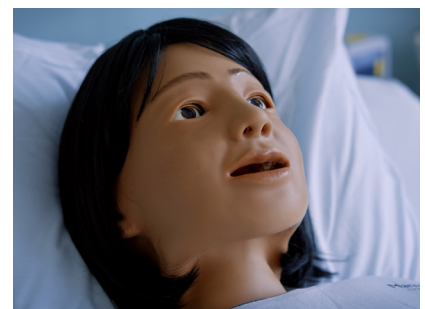
Advancing Maternal Survival and Care

Training health professionals to deliver high-quality care during critical obstetric emergencies is essential in addressing the maternal health crisis. MamaAnne, our high-fidelity birthing simulator, focuses on clinical relevance, rapid setup, and modularity to promote realism, ease of use, and adaptability.

MamaAnne empowers your teams to meet competency requirements, fosters inclusivity, and supports the growth of simulation as maternal care advances.



Available in Medium
and Dark Skin Tones



Features

Deliveries and Drills

- Occiput anterior delivery
- Occiput posterior delivery
- Breech delivery
- Shoulder dystocia
- Eclampsia and preeclampsia
- Postpartum hemorrhage (PPH) with internal uterus or Clean Bleed Mat
- 1.5L internal and 5.0L external blood reservoirs
- Assisted deliveries: forceps and vacuum
- Maternal collapse
- Sepsis
- Cord prolapse
- Placenta delivery

Pelvis Anatomy

- Ischial spines
- Pubic bone
- Urinary catheterization
- 375mL urine reservoir
- Bi-manual compression
- Anus for post-delivery assessment
- Rectal suppository simulation

Abdomen

- Palpable contractions
- Atonic and tonic uterus
- Three-directional suprapubic pressure sensing
- Fetal heart sounds

Airway

- Realistic airway with uvula, vocal cords, and esophagus
- Tongue edema
- Bilateral and unilateral lung blockage
- Head tilt / chin lift sensing
- Jaw thrust with articulated jaw
- Suctioning techniques (oral and nasopharyngeal)
- Bag-mask ventilation
- Oropharyngeal intubation
- Nasopharyngeal intubation
- Combitube, LMA and other airway device placement
- Endotracheal intubation
- Nasal and oral fiberoptic intubation
- Right mainstem intubation
- Supports Sellick Maneuver

Breathing

- Spontaneous breathing synchronized with selected breath rate (0-60 bpm)
- Variable respiratory rates
- Anterior and posterior lung sound auscultation sites
- Compatible with ASL 5000™ Lung Solution

Vascular

- Pre-ported IV access in both arms
- Subcutaneous and intramuscular injection sites in both shoulders and right thigh
- Intraosseous access in both shoulders
- Volume infusion

Circulation

- Adjustable BP levels: systolic / diastolic
- BP measured manually by auscultation of Korotkoff sounds
- Bilateral carotid, brachial, radial, femoral, and pedal pulses, synchronized with ECG
- Pulse strength variable with BP
- Pulse palpation is detected and logged
- Supports NIBP

Cardiac

- Defibrillation and cardioversion using ShockLink
- CPR compressions generate palpable pulses, blood pressure waveform, and ECG artifacts
- Realistic compression depth and resistance
- Detection of depth, release, and frequency of compressions
- Hand placement feedback for compressions
- Real time feedback on quality of CPR
- 4-lead ECG placement
- Extensive ECG Library
- Heart sounds synchronized with ECG
- ECG rhythm monitoring when used with simulated patient monitor

Movement

- Full articulation of arms and legs
- Able to position in All Fours birthing position
- Elbow joint locking mechanism to assist in stability in All Fours
- Realistic articulation of neck, shoulder, hip, knee, and ankle joints

- Sits unassisted
- Seizures / convulsions
- Other positions: supine, semi-recumbent, left lateral, lithotomy, and McRoberts

Birthing Baby

- Realistic weight and size of full-term neonate
- Palpable limbs and fontanelles
- Anatomical landmarks to identify presentation of baby
- Cutable umbilical cord
- Natural head flex
- Open mouth

Other

- Patient voice: pre-recorded and custom sounds, instructor can simulate patient's voice
- Blinking eyes with adjustable blink rate
- Ability to open, close, or partially close eyes for consciousness cue
- Pupillary accommodation:
 - Synchrony / asynchrony
 - Normal and sluggish speed of response

Software Controls

- Simulated touchscreen patient monitor
- LLEAP operation provides additional simulated parameters including CO2, CVP, ICP, anesthetic agent, TOF, cardiac output, and more. In addition, the LLEAP monitoring options can display x-ray, custom images, and custom video
- Simulated electronic fetal monitoring
- Compatible with VitalsBridge™ FM

Take Your Simulation Training Further

SimCapture

Simulation and Debriefing Management Solution



ASL 5000™ Lung Solution

Realistic ventilation management training



MamaBirthing

Perinatal Task Trainer



VitalsBridge FM

Real monitors, real training



Simulation with a Social Impact

When MamaAnne is purchased, a MamaBirthing is gifted to you to support your program.

Additionally, through our Buy One, Gift One program, a second MamaBirthing is donated to a selected partnership program for a community in need.



Ordering Information

380-00250

MamaAnne Dark

380-00150

MamaAnne Medium

Every MamaAnne is paired with a MamaBirthing at no cost.

Expand your simulation

405-00500 VitalsBridge FM

405-01400 VitalsBridge4

420-11900 ASL 5000™ Lung Solution

215-01050B Laerdal Scenario Cloud

185-10050 ShockLink System

370-00033 MamaBirthing Dark

370-00133 MamaBirthing Light

Computer Options

400-10201 Laptop Instructor/Patient Monitor

400-09201 Tablet-PC Instructor/Patient Monitor

400-09501 Rugged Tablet Instructor/Patient Monitor

400-29301 All-in-One Panel PC Instructor/Patient Monitor

Services

Laerdal offers comprehensive Educational Services to support your faculty competency development needs to optimize learning potential in your students, and Technical Services to help ensure your equipment is operational for maximum performance.

For more information, visit Laerdal.com

©2025 Laerdal Medical. All rights reserved. 2502-1607290851

limbs&
things



Laerdal
helping save lives