

Undercounter Dishwasher/Glasswasher

Quick User Guide

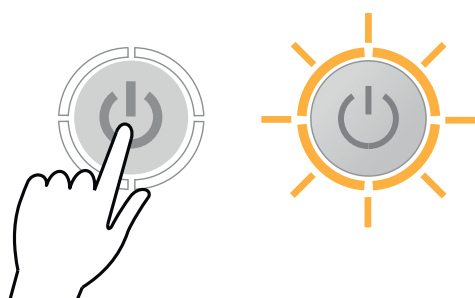


Caution

Only use this Quick User Guide after the Dishwasher has been fully commissioned. See Section 5 in the User Manual.

1 Turning the dishwasher on

Push the 'ON' button, the button will flash amber to indicate pre-heating and water filling of the machine. You can continue to prepare the machine whilst this process occurs.

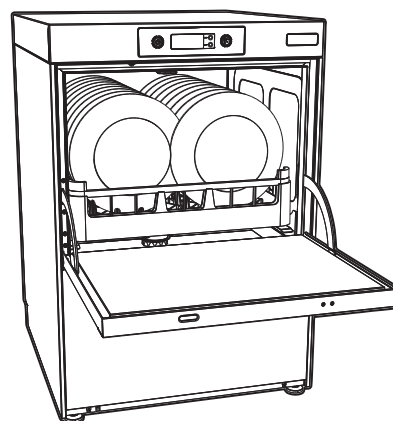


2 Loading the dishwasher

Open the door to load the items. Before loading, ensure debris is rinsed from the items. Once complete, close the door.



See the User Manual for loading information.



4 Confirming your selection

Cycle indicator will illuminate blue to show a program selection has been made.



3 Dishwasher starts cycle

Once the temperature and water cycle is complete, the amber **START** button will illuminate green and your program will start.



5 Selecting a wash program (optional)



If you do not require the default program then choose your desired program using the **SELECT** button until the display shows the program you require.



* Default program

D400 D400DUO D400DUOWS D500 D500DUO D500DUOWS G350 G400 G400DUO G400DUOWS G500 G500DUO G500DUOWS

Undercounter Dishwasher/Glasswasher

Quick User Guide

6 Low Salt Warning



Before first use, when filling with salt, ensure the Salt Reservoir has been filled with fresh water. See Section 5 Commissioning in the User Manual.

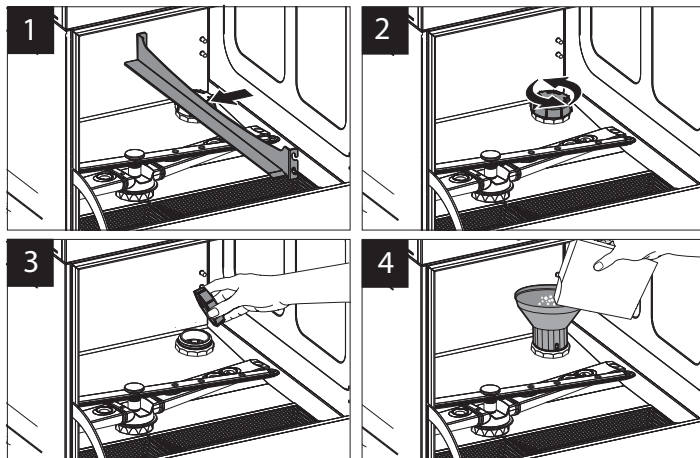
The following icon indicates your machine is low on salt.



The salt should be replenished as soon as possible to avoid limescale from building up in your machine.

To refill the Salt Reservoir follow the instructions below:

1. Open the door to the machine.
2. Remove the right hand basket ramp. (1)
3. Remove the Salt Reservoir Cap at the back right hand corner of the Wash Chamber. (2 and 3)
4. Using the Salt Funnel supplied fill the Reservoir with granulated salt. (4)
5. Wipe away any excess or spilt salt from the Chamber and the Reservoir opening.
6. Refit the Cap to the Reservoir, ensure that the Cap is fitted flat and secure.
7. Drain down the machine to remove the salt water.

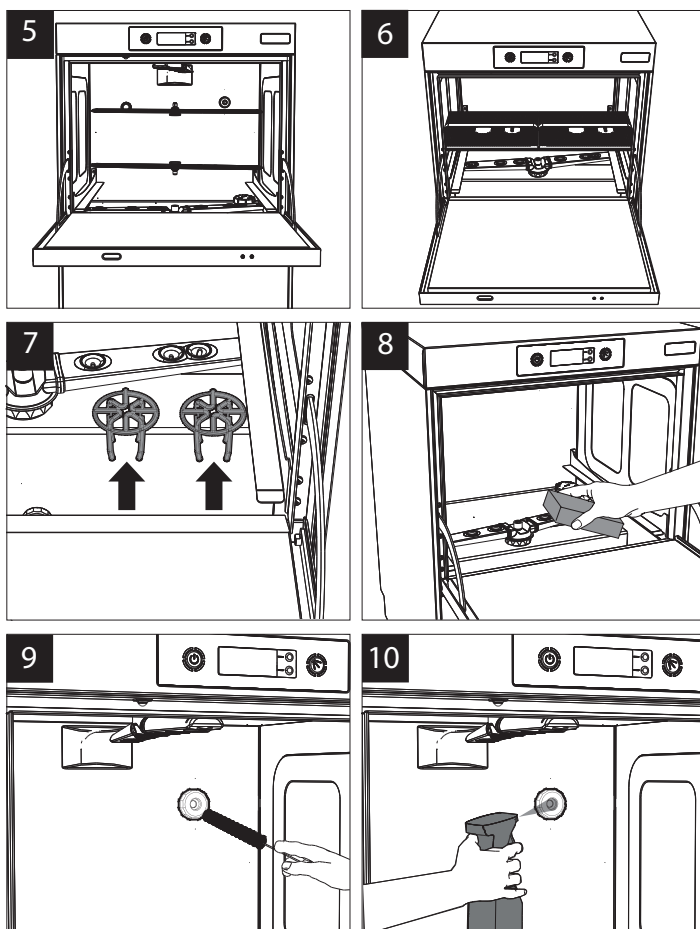


7 Daily Cleaning

The interior of the machine should be cleaned after each service when the machine is drained down.

- Remove and clean the top and bottom Rinse and Wash Arms. (5)
- Remove and clean the primary filters. (6)
- Remove and clean the secondary filters. (7)
- Clean the interior of the Wash Tank with a sponge (8) and/or brush for all apertures and outlets. (9)
- Clean around the door hinge.
- Use a trigger spray bottle with a jet nozzle to spray the ball in the anti-syphon device (pumped drain machines only). (10)
- If required apply food grade grease to the Door Ball Catch.

Ensure all arms and filters are refitted to the machine before turning it on.



CLASSEQ