

Pass Through Warewasher

Quick User Guide



Caution

Only use this Quick User Guide after the Warewasher has been fully commissioned. See Section 5 in the User Manual.

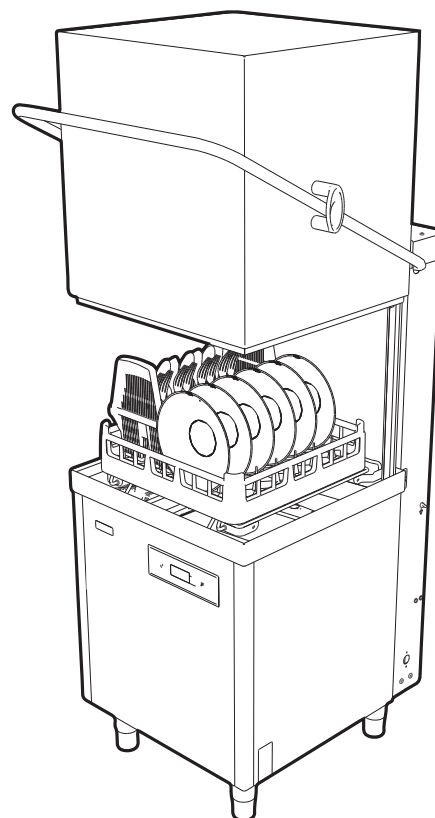


Loading the warewasher

Open the hood to load a basket. Before loading, ensure debris is rinsed from the items. With the basket in place, close the hood.

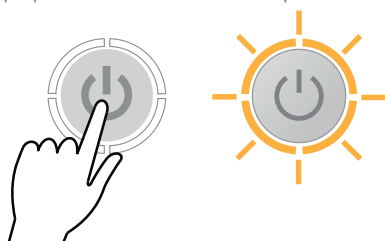


See the User Manual for loading information.



Turning the warewasher on

Push the 'ON' button, the button will flash amber to indicate pre-heating and water filling of the machine. You can continue to prepare the machine whilst this process occurs.



Warewasher start cycle

Once the temperature and water cycle is complete, the amber **START** button will illuminate green and your program will start.



Confirming your selection

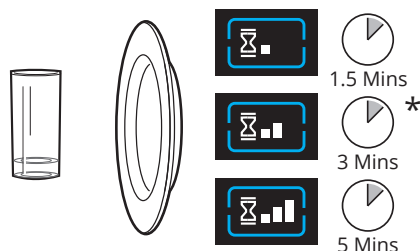
Cycle indicator will illuminate blue to show a program selection has been made.



Selecting a wash program (optional)



If you do not require the default program then choose your desired program using the **SELECT** button until the display shows the program you require.



* Default program

Pass Through Warewasher

Quick User Guide

6 Low Salt Warning



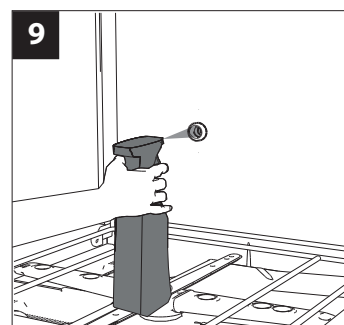
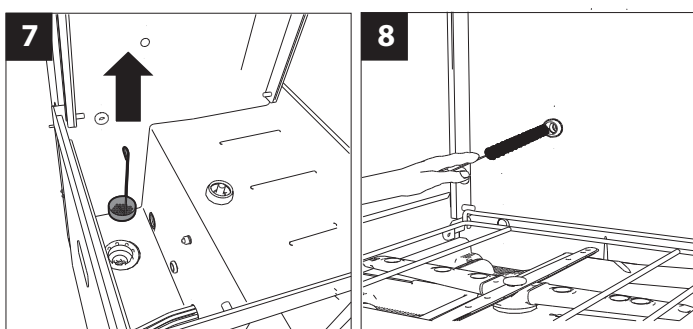
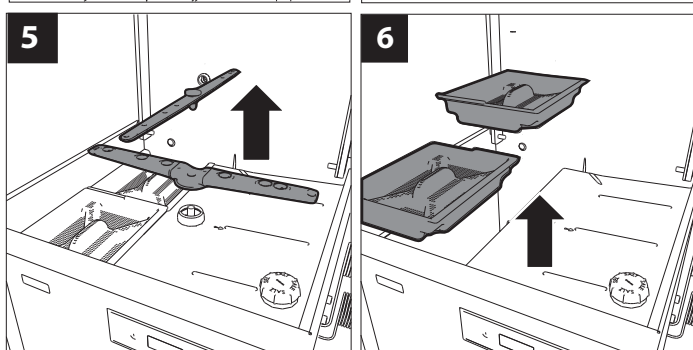
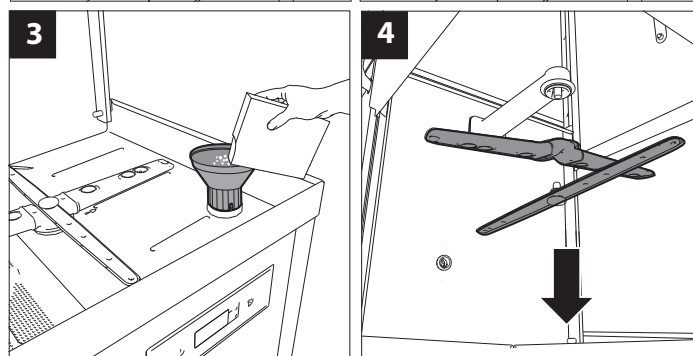
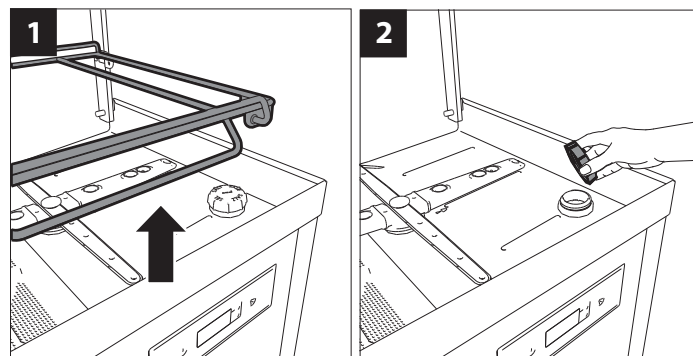
Before first use, when filling with salt, ensure the Salt Reservoir has been filled with fresh water. See Section 5 Commissioning in the User Manual.

The icon  indicates your machine is low on salt.

The salt should be replenished as soon as possible to avoid limescale from building up in your machine.

To refill the Salt Reservoir follow the instructions below:

1. Open the hood to the machine.
2. Remove the Basket Ramp (1).
3. Remove the Salt Reservoir Cap at the front right hand corner of the Wash Chamber (2).
4. Using the Salt Funnel supplied fill the Reservoir with granulated salt.
5. Wipe away any excess or spilt salt from the Chamber and the Reservoir opening.
6. Refit the Cap to the Reservoir, ensure that the Cap is fitted flat and secure.
7. Close the hood and drain down the machine to remove the salt water.



7 Draining Down

Note

The warewasher must be **OFF** to drain down.

There are two ways to drain down the warewasher lifting the Hood up and down and via the control buttons.

- Push OFF the warewasher on/off button (for both ways)



- Lift the Hood up and down.

OR

- Push on the cycle button



- The cycle indicator flashes blue



- Flashing stops the drain down cycle is complete.



8 Daily Cleaning

The interior of the machine should be cleaned after each service when the machine is drained down.

- Remove and clean the top Rinse and Wash Arms (4).
- Remove the Basket Ramp (1).
- Remove and clean the bottom Rinse and Wash Arms (5).
- Remove and clean the Primary Filters (6).
- Remove and clean the Secondary Filter (7).
- Clean the interior of the Wash Tank with a sponge and/or brush for all apertures and outlets.
- Clean around the hood and sliding rails.
- Use a small bottle brush followed by a trigger spray bottle with a jet nozzle to spray the ball in the Anti-Syphon Device (pumped drain warewashers only) (8 and 9).

Ensure all Arms and Filters are refitted to the machine and the hood is closed before turning it on.

CLASSEQ