

World's #1 in Orthopedics

In Florida, our team provides the highest quality care from the world's leading academic medical center focused on musculoskeletal health. With locations in West Palm Beach and Wellington, we offer the same superior quality of surgical care, rehabilitation, and other services that our patients expect from HSS.

Specialties:

- Hand & Upper Extremity
- Hip & Knee Replacement
- Orthopedic Trauma
- Physiatry
- Primary Sports Medicine
- Spine
- Sports Medicine

Services offered:

- Nonsurgical Orthopedic Care
- Outpatient Surgery
- Radiology, Diagnostics and Imaging
- Sports Injury Care
- Spine Care
- Physical Therapy and Sports Performance



To learn more or connect with HSS Care Concierge, call **561.657.4581**, email HSS4TheBreakers@hss.edu, or visit HSS.edu/TheBreakers.

HSS Florida is an in-network provider for team members and family enrolled in one of the Blue Cross Blue Shield health plans offered by The Breakers.

West Palm Beach

300 Palm Beach Lakes Blvd.
West Palm Beach, FL 33401

Wellington

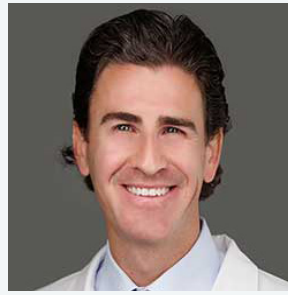
1395 South State Rd. 7, Suite 410
Wellington, FL 33414



Matthew Butler, MD
Hand & Upper Extremity



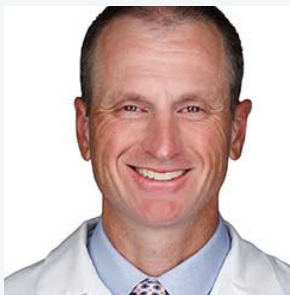
Kathleen Davenport, MD
Dance Medicine, Physiatry,
Spine, Sports Medicine



Zachary Grabel, MD
Spine Surgery



Angelie Mascarinas, MD
Physiatry



Michael Milligan, MD, MBA
Primary Sports Medicine



Martin Roche, MD
Knee Replacement



Nicholas Sama, MD
Fracture and
Trauma Surgery



Ryan Simovitch, MD
Shoulder Surgery



Charlton Stucken, MD
Sports Medicine,
Shoulder Surgery



Spencer Summers, MD
Hip and Knee Replacement



John Wang, MD
Hip and Knee
Replacement



To learn more or connect with HSS Care Concierge, call **561.657.4581**, email **HSS4TheBreakers@hss.edu**, or visit **HSS.edu/TheBreakers**.

HSS Florida is an in-network provider for team members and family enrolled in one of the Blue Cross Blue Shield health plans offered by The Breakers.

West Palm Beach

300 Palm Beach Lakes Blvd.
West Palm Beach, FL 33401

Wellington

1395 South State Rd. 7, Suite 410
Wellington, FL 33414