

EN - Directions For Use

FR - Mode d'emploi

DE - Wegbeschreibung für den Einsatz

IT - Istruzioni per l'uso

ES - Instrucciones de uso

SV - Bruksanvisning

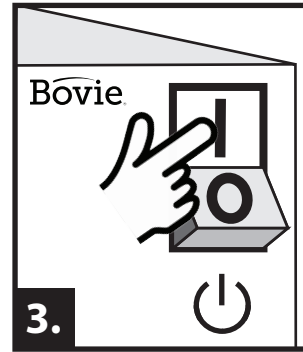
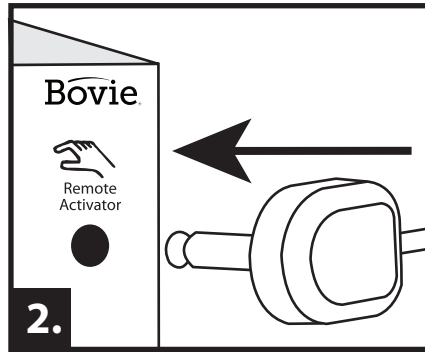
DA - Betjeningsvejledning

NL - Gebruiksaanwijzing

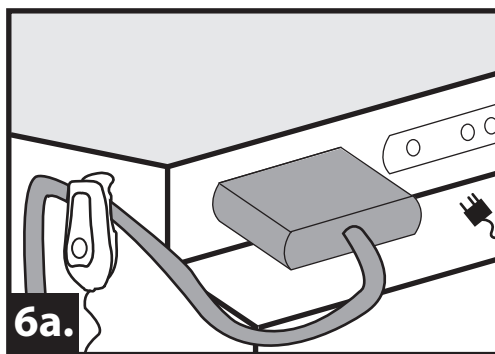
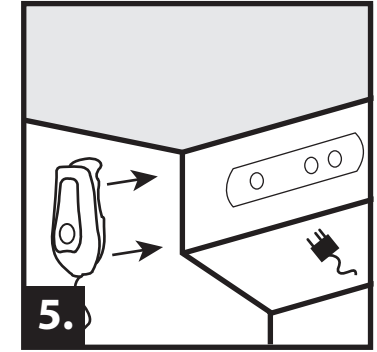
PT - Instruções de utilização

ET - Kasutusjuhised

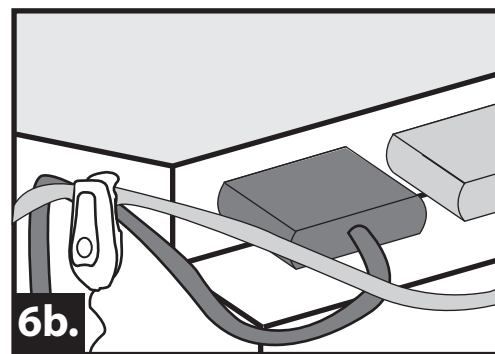
Bovie EZ Link™



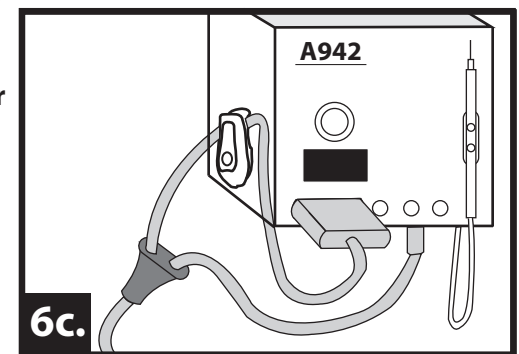
EN - CLEAN
FR - NETTOYER
DE - SAUBER
IT - PULIRE
ES - LIMPIEZA
SV - STÅDA
DA - RENGØR
NL - REINIGEN
PT - LIMPEZA
ET - PUHASTAMINE



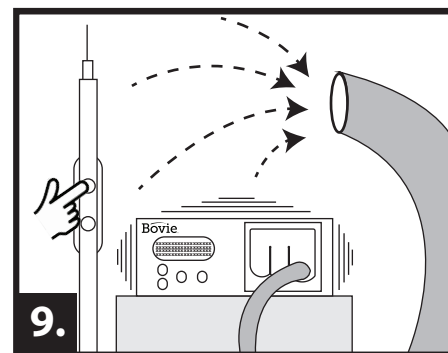
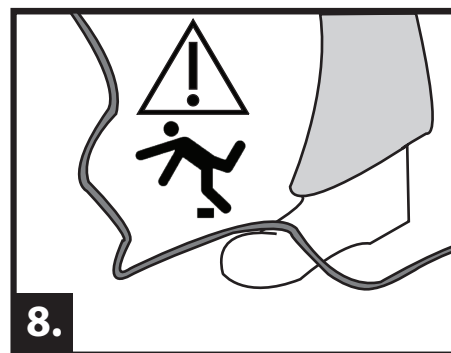
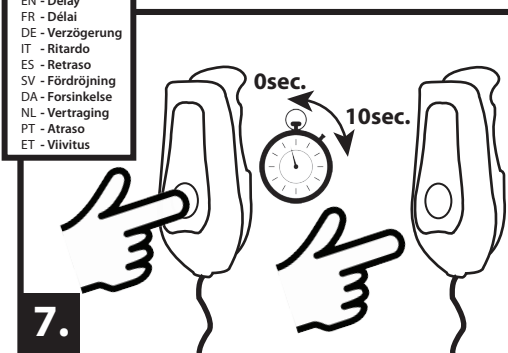
EN - Or
FR - Ou
DE - Oder
IT - O
ES - O
SV - Eller
DA - Eller
NL - Of
PT - Ou
ET - Või



EN - Or
FR - Ou
DE - Oder
IT - O
ES - O
SV - Eller
DA - Eller
NL - Of
PT - Ou
ET - Või



EN - Delay
FR - Délai
DE - Verzögerung
IT - Ritardo
ES - Retraso
SV - Fördörjning
DA - Forsinkelse
NL - Vertraging
PT - Atraso
ET - Viivitus



Bovie ^{Rx ONLY} MD

Distributed By: **Symmetry Surgical Inc.**

3034 Owen Drive
Antioch, TN 37013 USA
1-888-364-7004
SRN: US-MF-000024174

EC REP

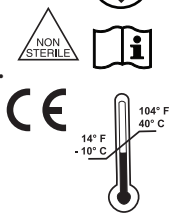
Emergo Europe
Westervoortsedijk 60
6827 AT Arnhem
The Netherlands

CH REP

MedEnvoy Switzerland
Gotthardstrasse 28
6302 Zug
Switzerland

MC-23105 Rev 3

903101 Rev D



Not Made With
Natural Rubber Latex