

EN - Directions For Use

FR - Mode d'emploi

DE - Wegbeschreibung für den Einsatz

IT - Istruzioni per l'uso

ES - Instrucciones de uso

SV - Bruksanvisning

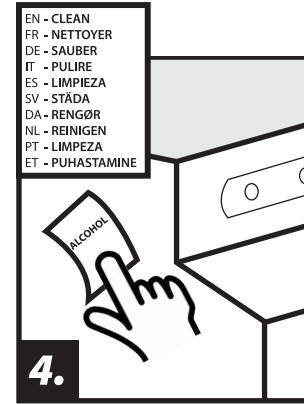
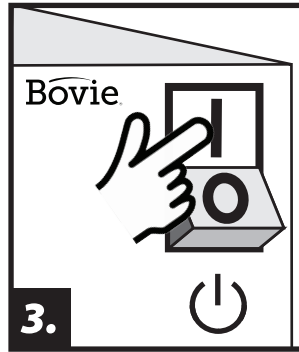
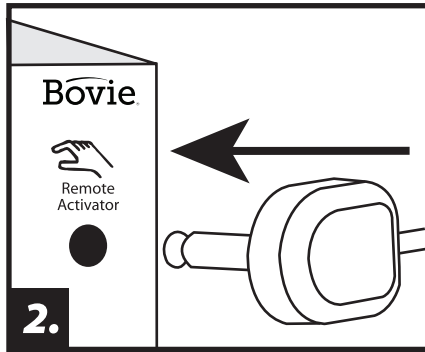
DA - Betjeningsvejledning

NL - Gebruiksaanwijzing

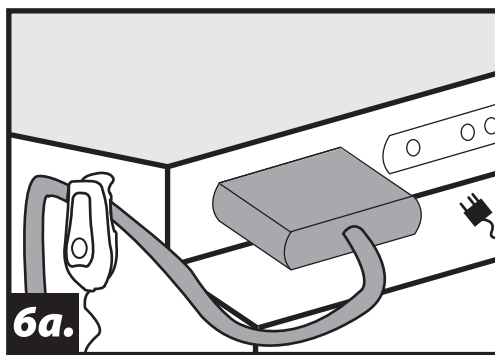
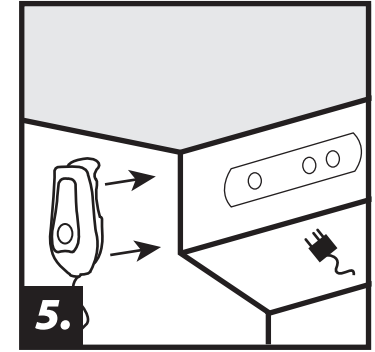
PT - Instruções de utilização

ET - Kasutusjuhised

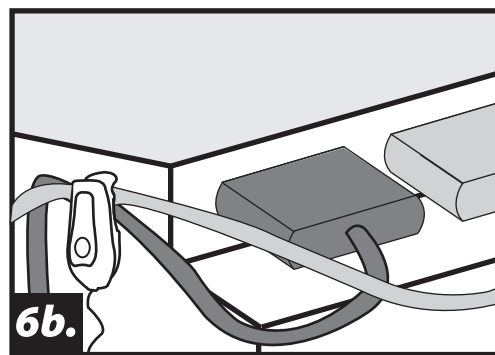
# Bovie EZ Link™



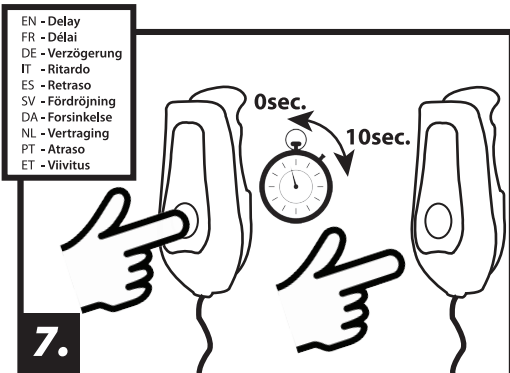
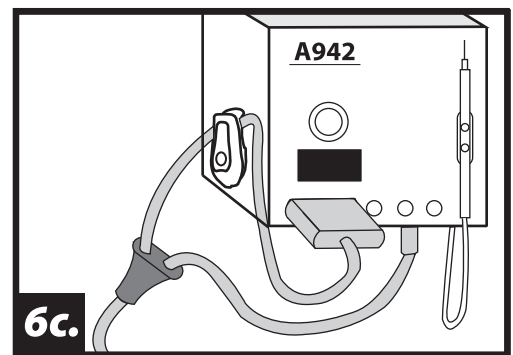
EN - CLEAN  
FR - NETTOYER  
DE - SAUBER  
IT - PULIRE  
ES - LIMPIEZA  
SV - STÄDA  
DA - RENGØR  
NL - REINIGEN  
PT - LIMPEZA  
ET - PUHASTAMINE



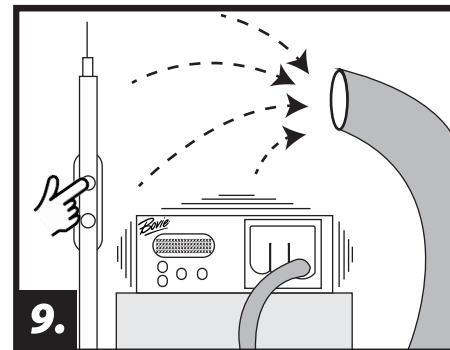
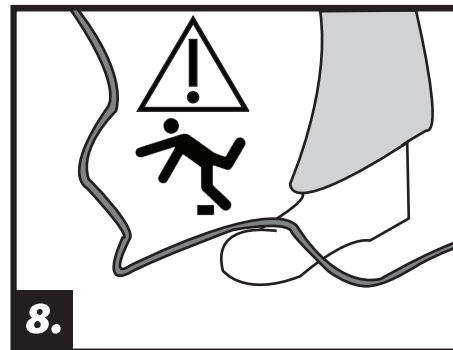
EN - Or  
FR - Ou  
DE - Oder  
IT - O  
ES - O  
SV - Eller  
DA - Eller  
NL - Of  
PT - Ou  
ET - Või



EN - Or  
FR - Ou  
DE - Oder  
IT - O  
ES - O  
SV - Eller  
DA - Eller  
NL - Of  
PT - Ou  
ET - Või



EN - Delay  
FR - Délai  
DE - Verzögerung  
IT - Ritardo  
ES - Retraso  
SV - Fördröjning  
DA - Forsinkelse  
NL - Vertraging  
PT - Atraso  
ET - Viivitus



Distributed By:

## Bovie

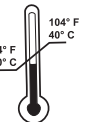
**Bovie Medical Corporation**  
5115 Ulmerton Road  
Clearwater, Florida 33760 USA  
+1-727-384-2323 • Fax 727-347-9144  
USA 1-800-537-2790  
www.boviemed.com

EC REP  
Emergo Europe  
Prinsessegracht 20  
2514 AP, The Hague  
The Netherlands



MC-23105 Rev 2  
2017-04-27  
903101 Rev C

Rx ONLY



Not Made With Natural Rubber Latex