

## Instructions for use

### Lindy Traction Boot Liner 712900

Previously Beatty® reorder # 031701

#### Intended Use:

Intended to support and maintain the position of an anesthetized patient during surgery.

#### Intended User:

Intended to be used by Healthcare Professionals on patients requiring medical procedures.


#### Precautions:

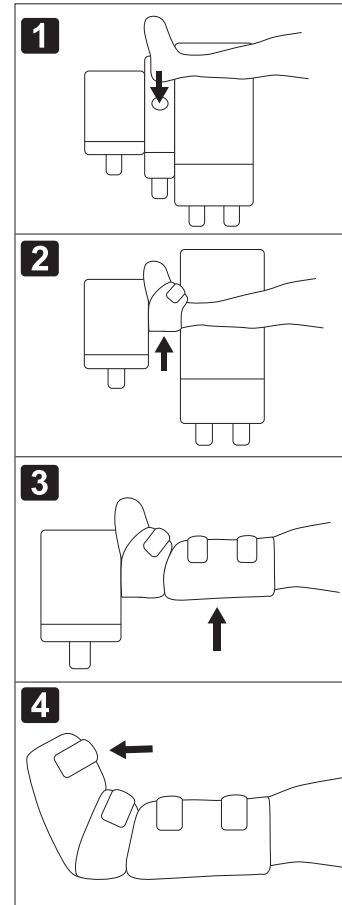
- For use with Allen® Traction Boot A – 93000 and Steris® OT 1000 Traction Boot.
- Ensure liner is securely fastened around foot before placing in the positioning device.
- Avoid redundant material that may wrinkle or cause excess pressure.
- This device is single use only.
- Do not sterilize.

#### Disposal:

Dispose or recycle general surgical devices per facility protocol and all applicable federal, state, regional, and/or local laws and regulations.

#### Instructions for Use:

1. Place liner with  facing down.
2. Place patient's foot in liner, aligning the patient's heel with round opening.
3. Follow illustrated directions for securing foam around patient's foot.
4. Ensure boot straps are loose.
5. Place patient's wrapped foot into boot and secure using manufacturer's recommendations.
6. Secure boot to table using manufacturer's recommendations.
7. Discard after use.



Allen® is a registered trademark of Allen Medical Systems, Inc. ("Allen Medical"). Steris® is a registered trademark of Steris Inc. ("Steris"). Aspen Surgical Products, Inc. is not affiliated with, endorsed by, or sponsored by Allen Medical or Steris.



Aspen Surgical Products, Inc.

6945 Southbelt Dr. SE, Caledonia, MI 49316  
 phone +1 616.698.7100 toll-free +1 888.364.7004  
[aspensurgical.com](http://aspensurgical.com)

Made in Mexico



Rx ONLY