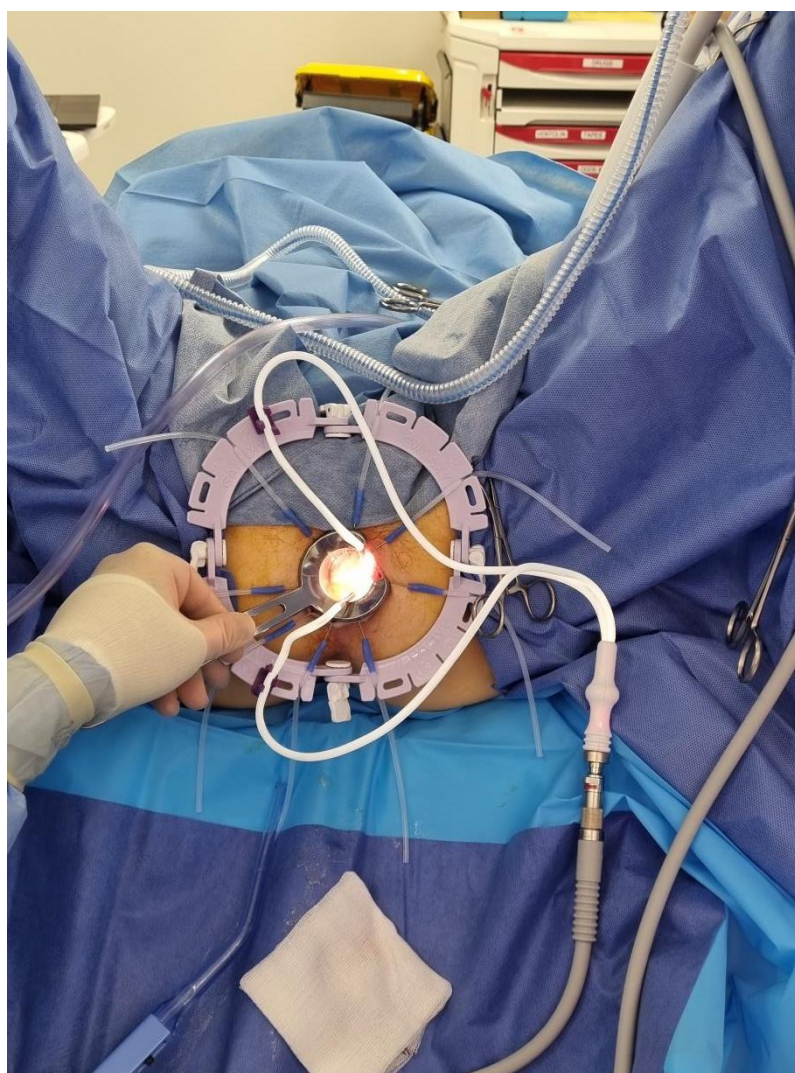


# Improving Colorectal Cancer Surgery in New Zealand with the Galaxy II Retractor and LUX Connect Light Lead

## Introduction

Innovations in surgical equipment have continuously propelled the field of medicine forward, enabling surgeons to perform complex procedures with greater precision, efficiency, and safety. One such groundbreaking advancement has been witnessed in New Zealand, where Dr. Ian Bradford, an experienced colorectal surgeon at St George's Hospital in Christchurch, recently performed the first surgery in the country utilizing the Galaxy II retractor and LUX Connect light lead.



## The Surgical Case: Transanal Tumour Resection

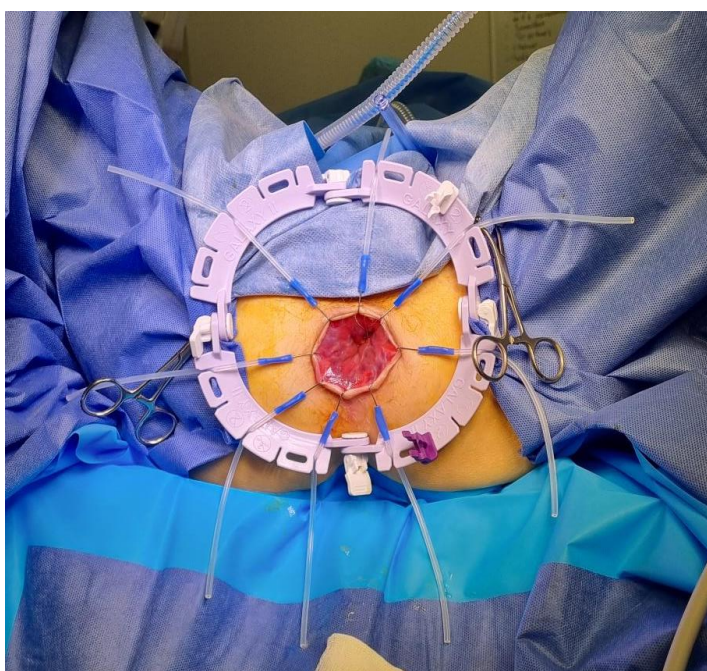
The inaugural utilization of the Galaxy II retractor and LUX Connect light lead occurred during a transanal tumour resection, a procedure aimed at removing tumours located in the rectum through minimally invasive techniques.

This approach offers several advantages over traditional surgical methods, including reduced postoperative pain, faster recovery times, and improved cosmetic outcomes.

## The Galaxy II Retractor: Lightweight, Strong, and Versatile

Dr. Bradford and his surgical team were impressed by the performance of the Galaxy II retractor throughout the procedure. Designed with precision engineering and cutting-edge materials, the Galaxy II retractor proved to be a game-changer in terms of intraoperative retraction. Its lightweight yet robust construction allowed for effortless manoeuvrability, while the innovative camlocks provided swift and secure fixation, ensuring optimal exposure of the surgical field.

The Galaxy II retractor's ease of positioning and adjustability played a pivotal role in enhancing surgical precision and efficiency. By providing consistent and reliable retraction, the Galaxy II retractor enabled Dr. Bradford to navigate the intricate anatomy of the rectum with great accuracy, ultimately leading to superior surgical outcomes.



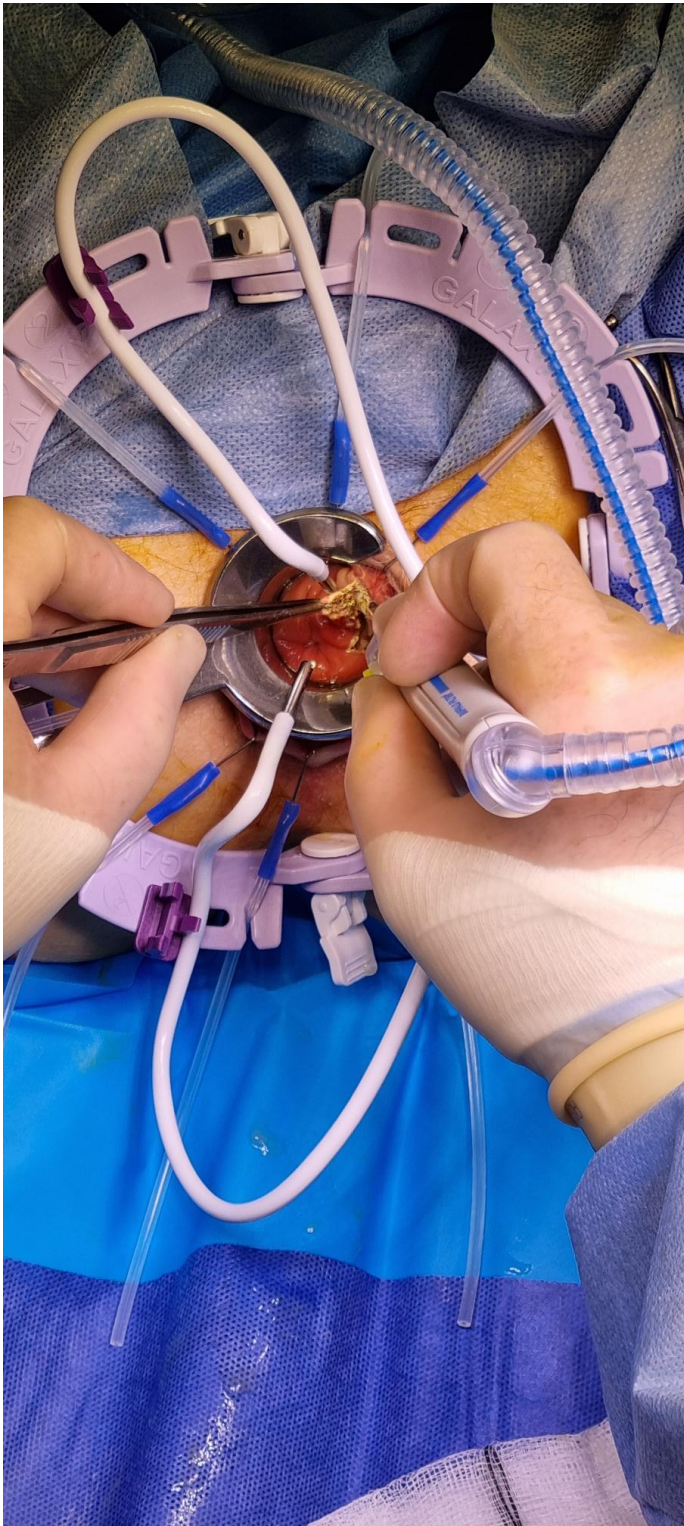
### Dr. Bradford's Insights:

Dr. Bradford's testimony sheds light on the practical advantages of these innovations, particularly emphasizing the critical nature of precise illumination at the surgical site. By eliminating shadows and ensuring consistent light quality, the LUX Connect light lead enhances the surgeon's ability to discern subtle details, thereby mitigating the risk of errors and improving patient safety.

Furthermore, the compact and user-friendly design of the device facilitates seamless integration into the surgical workflow, empowering surgeons to maintain focus and autonomy during procedures.

Dr. Bradford comments: "This was a traditionally tricky operation made much easier by good lighting.

**"IF IT NEEDED ADJUSTING I  
COULD DO SO IMMEDIATELY  
MYSELF RATHER THAN HAVING  
TO ASK A THIRD PARTY TO DO SO**



patient.”

Dr Bradford continues: “My own reasons for liking it were because of the ability to deliver the illumination of the operative field AT THE OPERATION SITE. All other light sources, like OT overhead lights or headlights have the source of light at a distance, and that means that many objects interrupt the beam of light and create shadow or deplete the light quality reaching the operative field e.g. head, hands, instruments etc.

“THE GAMECHANGER FOR ME WAS THE ABILITY TO HAVE HIGH LUX LEVELS OF ILLUMINATION RIGHT WHERE I NEEDED IT TO BE.”

The gamechanger for me was the ability to have high Lux levels of illumination right where I needed it to be. The light source was small enough to not get in the way of the dissection or the suturing, and if it needed adjusting I could do so immediately myself rather than having to ask a third party to do so for me.

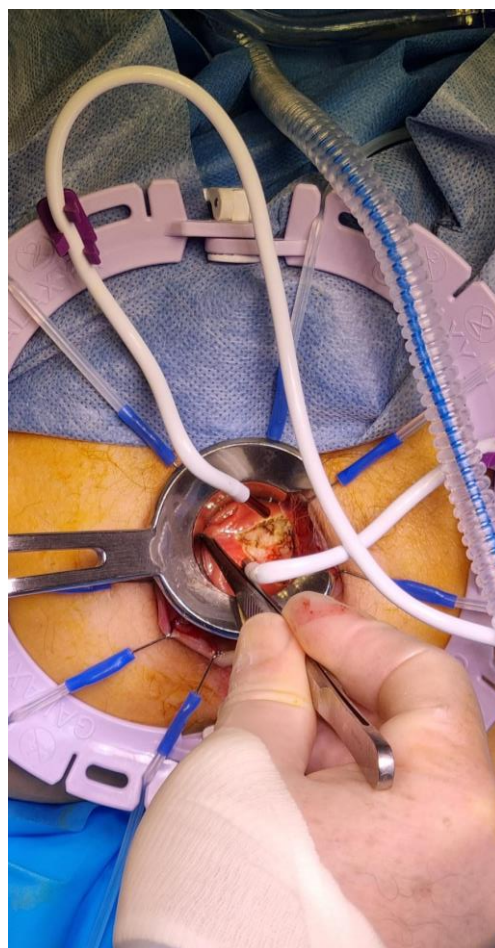
In areas where space is very restricted, and where getting into the wrong planes by working in the (semi)dark can have disastrous consequences, having that confidence from seeing the subtle detail is hugely beneficial to the surgeon and to the

## The LUX Connect Light Lead: Illuminating Surgical Excellence

In addition to the Galaxy II retractor, Dr. Bradford leveraged the cutting-edge capabilities of the LUX Connect light lead to enhance visibility during the procedure. This innovative device seamlessly integrated into the surgical setup, delivering targeted illumination to hard-to-reach areas of the surgical field.

The intuitive design of the LUX Connect light lead facilitated effortless connectivity and usage, allowing Dr. Bradford to focus on the task at hand without interruption. By illuminating the operative site with precision, the LUX Connect light lead played a critical role in optimizing visualization and ensuring the meticulous execution of the surgical plan.

### Enhancing Patient Outcomes through Advanced Surgical Technology



The utilization of the Galaxy II retractor and LUX Connect light lead represents a significant advancement in the field of colorectal surgery, with profound implications for patient care. By streamlining retraction and enhancing visibility, these innovative technologies empower surgeons like Dr. Bradford to perform complex procedures with greater confidence and efficiency.

Improved surgical instrumentation not only accelerates procedural times but also minimizes the risk of complications, ultimately leading to better patient outcomes. The enhanced visualization afforded by the LUX Connect light lead, coupled with the reliable retraction provided by the Galaxy II retractor, facilitates precise tissue dissection and ensures thorough tumor excision, reducing the likelihood of recurrence and postoperative complications.

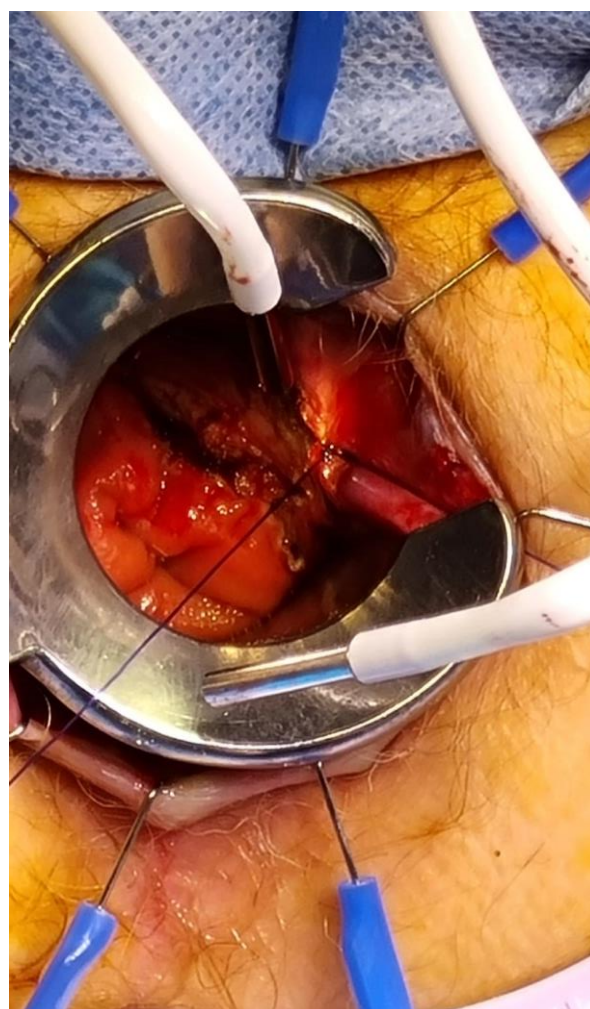
## Recognition of Excellence: Her Majesty Elizabeth II Award for Innovation

The groundbreaking contributions of the Galaxy II retractor and LUX Connect light lead to the field of surgery have not gone unnoticed. June Medical have received acclaim for their innovative design and transformative impact on patient care. In particular, the Galaxy II retractor has been honoured with the prestigious Her Majesty Elizabeth II Award for Innovation, a testament to its unparalleled performance and contribution to advancing surgical excellence.

### Conclusion

The successful integration of the Galaxy II retractor and LUX Connect light lead into the surgical armamentarium of St George's Hospital in Christchurch heralds a new era of innovation and excellence in colorectal surgery in New Zealand. Under the guidance of Dr. Ian Bradford and his dedicated team, the addition of these medical devices are poised to improve patient care by setting a new standard for surgical precision, efficiency, and safety.

As the healthcare landscape continues to evolve, it is imperative that we embrace advancements in surgical technology to enhance patient outcomes and improve quality of life. The Galaxy II retractor and LUX Connect light lead exemplify the transformative power of innovation in surgery, paving the way for future breakthroughs and advancements in the field.



**This case underscores the significant impact of the Galaxy II retractor and LUX Connect light lead on surgical practice, reaffirming their status as indispensable tools in the pursuit of excellence also in colorectal surgery.**