



# QUATTRO COLLECTION

## PRODUCT SELECTOR



# QUATTRO COLLECTION - ART



## BACK SHAPE



Radius - No Reveal



Radius - Top Reveal



Radius - Full Reveal



Radius - Top Reveal  
Integral Design



Radius - Full Reveal  
Integral Design



Linear - No Reveal



Linear - Top Reveal



Linear - Full Reveal



Linear - Top Reveal  
Integral Design



Linear - Full Reveal  
Integral Design



Soft Square



Round

## BACK MATERIAL



Polymer Standard



Polymer Crescent



Polymer Jungle



Radius & Linear  
Wood Veneer (Art)



Soft Square & Round Wood  
Veneer (Designer)



Soft Square & Round  
Laminate (Designer)



Soft Square & Round  
Polymer (Classic)

## BACK HEIGHT



Soft Square & Round Fully  
Enveloped (Soft Side)



Performance - Polymer



High - H 36" | 914mm  
Not including reveal



Low - L 33" | 838mm  
Not including reveal



High - H 36" | 914mm



Low - L 33" | 838mm



Performance - Polymer  
Standard - 32"

## BACK FOAM



Standard Art 2"



Standard 2"



Plush 3"



Contour

**SEAT PAN**



Wood



Custom Wood



Polymer



Fully Enveloped Uph.



Performance - Polymer

**SEAT FOAM**



Standard



Plush



Ultra Plush

**END PANELS SHAPES**



Linear Full Wrap



Linear Half Wrap



Radius Full Wrap



Radius Half Wrap



Half Wrap Full Length



Full Wrap Full Length

**END PANEL MAT. ARMRESTS**



Wood



Radius - Wood



Linear - Wood

**LIGHTING**



Dome



Strip

**END PANEL ID**



Panel ID

**BRANDING**



Live Area

**STANCHION MATERIALS**



Steel

**STANCHION SLOPE**



#0 Floor Slope 1° - F0



#1 Floor Slope 1°-3° - F1



#2 Floor Slope 3°-5.5° - F2



#3 Floor Slope 5.5°-7.75° - F3



#4 Floor Slope 7.75°-10° - F4



Low Rise - LR

**ADA**



High Rise - HR



Cantilevered End Standard



Easy Access Arm



Transfer End Standard

**CUP HOLDER**



Round

**FOOTCAP**



Polymer

**TABLET ARM**



Intermediate Tablet  
(Available w/ polymer seat pan)

# QUATTRO COLLECTION - *MODERN*



## BACK SHAPE



Radius - No Reveal



Radius - Top Reveal



Radius - Full Reveal



Radius - Top Reveal  
Integral Design



Radius - Full Reveal  
Integral Design



Linear - No Reveal



Linear - Top Reveal



Linear - Full Reveal



Linear - Top Reveal  
Integral Design



Linear - Full Reveal  
Integral Design



Soft Square



Round

## BACK MATERIAL



Performance - Polymer



Polymer Crescent



Polymer Jungle



Radius & Linear  
Wood Veneer (Art)



Soft Square & Round  
Wood Veneer (Designer)



Soft Square & Round  
Laminate (Designer)



Soft Square & Round  
Polymer (Classic)

## BACK HEIGHT



Soft Square & Round Fully  
Env. (Soft Side)



Performance - Polymer



High - H 36" | 914mm  
Not including reveal



Low - L 33" | 838mm  
Not including reveal



High - H 36" | 914mm



Low - L 33" | 838mm



Performance - Polymer  
Standard - 32"

## BACK FOAM



Standard Art 2"



Standard 2"



Plush 3"



Contour

## SEAT PAN



Wood



Custom Wood



Polymer

**SEAT FOAM**



Fully Enveloped Uph.



Performance - Polymer



Standard



Plush



Ultra Plush

**STANCHION MATERIALS**



Steel



Cast Aluminum  
(Indoor / Outdoor)

**STANCHION SLOPE**



#0 floor slope level-1° - F0



#1 floor slope 1°-3° - F1



#2 floor slope 3°-5.5° - F2



#3 floor slope  
5.5°-7.75° - F3



#4 floor slope 7.75°  
10° (steel only) - F4



Low Rise - LR



High Rise - HR

**END PANEL SHAPES**



Arm Support for Future  
Tablet Installation - TF



Tapered



Soft Square



Round



Tablet Arm



Custom



Wood Veneer

**END PANEL MATERIAL**

**TABLET ARMS**



Upholstered



Laminate



Writing - T1  
35" | 889 mm (min row spacing)



(stowed)



Laptop - T2M  
36" | 914 mm (min row spacing)



(stowed)

**ARMRESTS**



Large Laptop - T2  
42" | 1067 mm (min row spacing)



(stowed)



Polymer



Wood



Upholstered

**CUP HOLDERS**



Front Mount



Rear Mount

**LIGHTING**



High Mount



Low Mount

**ADA**



Easy Access Arm



Armless

**BRANDING**



Graphic Logo

**FOOTCAP**



Polymer

# QUATTRO COLLECTION - *TRADITIONAL*



## BACK SHAPE



Radius - No Reveal



Radius - Top Reveal



Radius - Full Reveal



Radius - Top Reveal  
Integral Design



Radius - Full Reveal  
Integral Design



Linear - No Reveal



Linear - Top Reveal



Linear - Full Reveal



Linear - Top Reveal  
Integral Design



Linear - Full Reveal  
Integral Design



Soft Square



Round

## BACK MATERIAL



Soft Square - Plyform



Soft Square - Polymer



Soft Square - Polymer  
Crescent



Soft Square - Polymer  
Jungle



Radius & Linear  
Wood Veneer (Art)



Soft Square & Round  
Wood Veneer (Designer)



Soft Square & Round  
Laminate (Designer)

## BACK HEIGHT



Soft Square & Round  
Polymer (Classic)



Soft Square & Round Fully  
Env. (Soft Side)



Performance - Plyform



Performance - Polymer



High - H 36" | 914mm  
Not including reveal



Low - L 33" | 838mm  
Not including reveal



High - H 36" | 914mm

## BACK FOAM



Low - L 33" | 838mm



Performance - Plyform  
Standard - 32"



Performance - Polymer  
Standard - 32"



Standard Art 2"



Standard 2"



Plush 3"



Contour

**SEAT PAN**



Wood



Custom Wood



Polymer



Fully Enveloped Uph.



Performance - Plyform



Performance - Polymer

**SEAT FOAM**



Standard



Plush



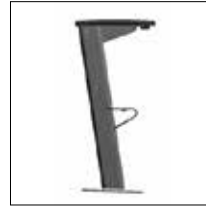
Ultra Plush

**STANCHION MATERIALS**

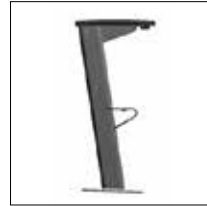


Steel

**STANCHION SLOPE**



#0 Floor Slope 1° - F0



#1 Floor Slope 1°-3° - F1



#2 Floor Slope 3°-5.5° - F2

**END PANEL SHAPES**



#3 Floor Slope 5.5°-7.75° - F3



#4 Floor Slope 7.75°-10° - F4



Low Rise



High Rise - HR



Cantilevered End Standard



Tapered



Soft Square

**END PANEL MATERIAL**



Round



Tablet Arm



Wood Veneer



Upholstered



Laminate



Writing - T1  
35" | 889 mm  
(min row spacing)



(stowed)

**ARMRESTS**



Polymer



Wood



Upholstered

**CUP HOLDERS**



Rear Mount

**LIGHTING**



High Mount



Low Mount

**ADA**



Easy Access Arm



Transfer End Standard

**FOOTCAP**



Polymer

# QUATTRO COLLECTION - *NOSTALGIA*



## BACK SHAPE



Radius - No Reveal



Radius - Top Reveal



Radius - Full Reveal



Radius - Top Reveal  
Integral Design



Radius - Full Reveal  
Integral Design



Linear - No Reveal



Linear - Top Reveal



Linear - Full Reveal



Linear - Top Reveal  
Integral Design



Linear - Full Reveal  
Integral Design



Soft Square



Round

## BACK MATERIAL



Soft Square - Plyform



Soft Square - Polymer



Soft Square - Polymer  
Crescent



Soft Square - Polymer  
Jungle



Radius & Linear  
Wood Veneer (Art)



Soft Square & Round Wood  
Veneer (Designer)



Soft Square & Round  
Laminate (Designer)

## BACK HEIGHT



Soft Square & Round  
Polymer (Classic)



Soft Square & Round Fully  
Env. (Soft Side)



Performance - Plyform



Performance - Polymer



High - H 36" | 914mm  
Not including reveal



Low - L 33" | 838mm  
Not including reveal



High - H 36" | 914mm

## BACK FOAM



Low - L 33" | 838mm



Performance - Plyform  
Standard - 32"



Performance - Polymer  
Standard - 32"



Standard Art 2"



Standard 2"



Plush 3"



Contour



**SEAT PAN**



Wood



Custom Wood



Polymer



Fully Enveloped Uph.



Performance - Plyform



Performance - Polymer

**SEAT FOAM**



Standard



Plush



Ultra Plush

**END PANEL SHAPES**



Steel

**END PANEL MATERIAL**



#0 Floor Slope 1° - F0

**ARMRESTS**



Wood

**CUP HOLDERS**



Rear Mount

**BRANDING**



Standard



Custom

*STACKING*



**BACK SHAPE**



Soft Square

**BACK MATERIAL**



Round



Polymer (Classic)

**ARMREST**



No Armrest (ADA)



Polymer



Cup holder

**STANCHION MATERIAL**



Steel

**GANGING HARDWARE**



Upper  
red is for display only



Lower  
(red is for display only)

# UNIVERSAL - ACCESSORIES

## BACK TAILORING



Waterfall



Horizontal Pleat



Quilting Style 1



Quilting Style 2



Quilting Style 3



Quilting Style 4

## SEAT TAILORING



Waterfall



Quilting Style 1



Quilting Style 2



Quilting Style 3



Quilting Style 4

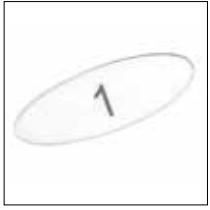


Performance - Polymer



Performance - Plyform

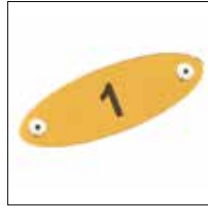
## SEAT ID



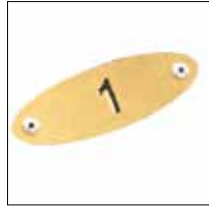
Lexan



Brushed Aluminum



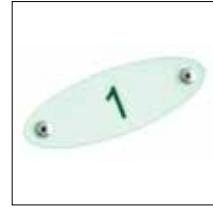
Bronzed Anodized



Brass

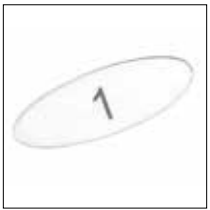


Stainless Steel



Ecoglo

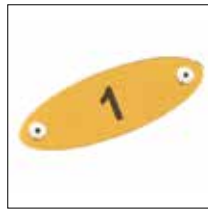
## ARM PLATES



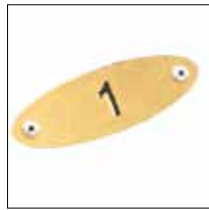
Lexan



Brushed Aluminum



Bronzed Anodized



Brass



Stainless Steel



Ecoglo

## DONOR PLATES



Brushed Aluminum



Bronzed Anodized



Brass



Stainless Steel

## USB POWER



Quick-Link

## ORGANIZATION



Organizer I



Organizer II

## BRANDING



Embroidery



Custom Fabric

## ADA



Removable Chairs

# UNIVERSAL - SURFACE MATERIALS

## STANDARD PAINT & POLYMER COLORS



452 Sand



Platinum



Titanium



411 Slate



Graphite

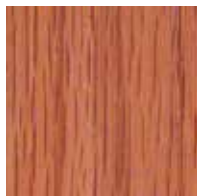
## WOOD SPECIES



Grasswood  
Natural Finish (7909-60)



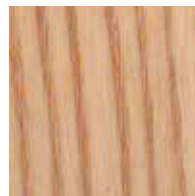
Birch



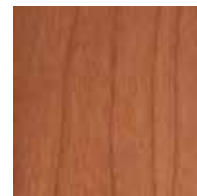
Red Oak



Maple



Ash



Cherry



Natural Pear (7061-60)



Wild Cherry (7054-60)



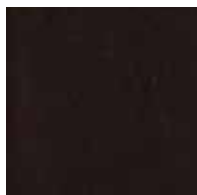
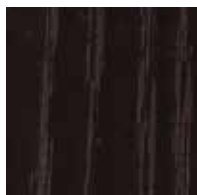
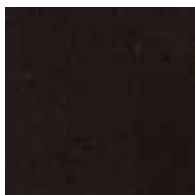
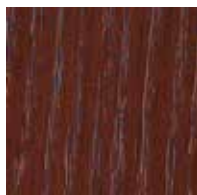
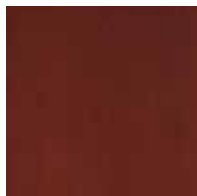
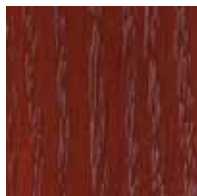
Versailles Anigre (7923-07)



Brighton Walnut (7922-07)



Ebony



With the standard colors shown here (above), plus our optional colors (custom colors and Pantone® matching available at an additional cost), your seating can be nearly any color you can dream up.

Please note that the numbers associated with our polymer products represent the closest matching Pantone® Solid Coated number. Production polymer colors can vary significantly from digital or printed samples, and polymer surface textures vary by product.

Wood accents are available in four standard species (Grasswood, Birch, Red Oak and Maple), finished in six standard colors. Select wood species (Ash and Cherry) and/or custom stain colors are available at additional cost.

All wood has natural variations in grain and color, and inherent characteristics such as mineral streaks, pitch pockets, tiger striping and insect markings which are not considered defects. Due to wood grain differences and staining in continuous color, tones may vary. Printed or digital representations are meant to illustrate a range only and may differ significantly from actual colors.

## PHYSICAL SAMPLES

We strongly recommend that before approving final finishes, armrests, fabrics, wood, laminate, decking, and more customers refer to production sample chips. Available from a Hussey Dealer or go to:  
[www.husseyseating.com/surface-material](http://www.husseyseating.com/surface-material)

For Fabric Cards, please contact the appropriate fabric supplier. Mills occasionally discontinue fabrics, so check with them before making your final choice.



Scan QR Code to go to our  
Surface Material Selector



Quattro<sup>®</sup>  
different. by design.

# PRODUCT SELECTOR



**husseyseating**<sup>™</sup>

YOUR PARTNER FOR SEATING SOLUTIONS

38 Dyer Street Extension  
North Berwick, Maine 03906 USA  
Toll Free (USA) 1.800.341.0401  
Tel: +1.207.676.2271  
Fax: +1.207.676.2222  
info@husseyseating.com  
www.husseyseating.com

Regional Offices:  
Europe  
Hussey Seatway  
www.husseyseatway.com  
Asia-Pacific & Middle East  
Hussey Asia-Pacific  
www.husseyasiapacific.com



Contact your local dealer  
to schedule a consultation  
by scanning the QR code.