

warewashing system guide



Cambro offers a complete line of products for washing, storing, transportation and clearing dishes without extra handling

**Now Available in India
Through Cambro Nilkamal**



Washcrate Warewashing System

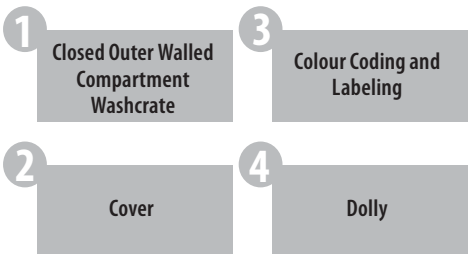


4-in-1 Washcrate Warewashing System

- Efficient Washing
- Optimum Sanitary Storage
- Inventory Control
- Safe, Sanitary Transportation

Washcrate Warewashing System

Cambro® offers a 4-in-1 system where glassware is washed, stored, identified and transported in one complete unit. This single multi-purpose unit involves the Camdolly® compartment washcrates and the washcrate cover.



Cambro Washcrates offer complete protection and lowers replacement costs for all of your delicate and valuable stemware and tumblers from washing and handling to stacking, storing and transporting.

Safe and Easy-to-Handle System

Efficient Washing System

Cost-Effective System

Hygienic Storage and Transportation System



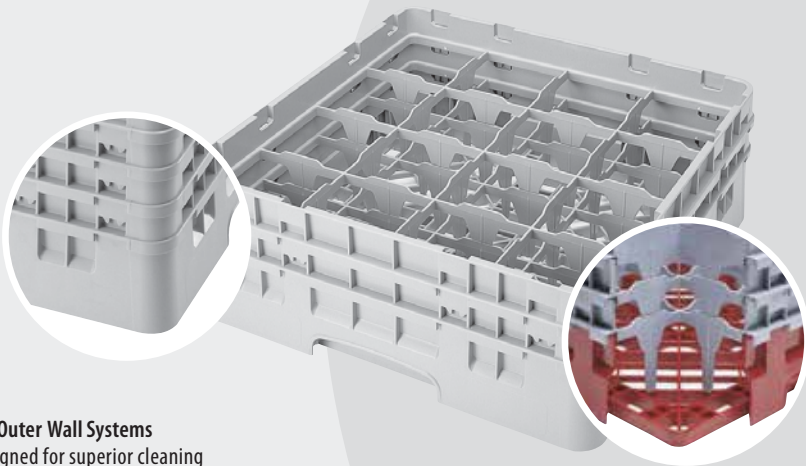
Efficient Washing System

Innovative Design

Cambro's closed outer wall system is designed for optimum cleaning, keeping water and chemicals inside the washcrate, reducing waste. Cambro's open inside compartments provide thorough circulation of water and cleaning solutions to promote excellent cleaning and quick and thorough drying. Open outer wall design increases overall operational costs because of the need to rewash glassware. This increases the consumption of water, chemicals, utilities and labor or plastic wrap.



FACT: Water in commercial dishwashers enters from above and below. Cambro's washcrates have open inside compartments that allow water and chemicals to pass between areas easily and wash all contents efficiently.



Closed Outer Wall Systems are designed for superior cleaning keeping water and chemicals inside the washcrate, reducing waste.

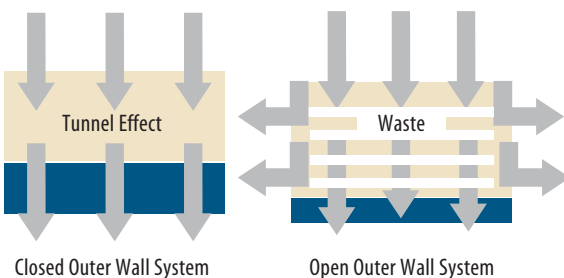
Open Inside Compartments Provide thorough circulation of water and cleaning solutions and promote quick and thorough drying.

Benefits of Tunnel Effect in Closed Outer Wall System

- Optimum washing and rinsing due to longer contact of solution inside the washcrate.
- Reduce waste of water and chemicals unlike open outer wall washcrates.
- Eliminate costly rewashing
- Increase savings in water, chemicals and electricity consumption.
- Time and labor savings since there will be no rewashing before setup.
- Reduce breakage from reduced handling.



Customers are served with clean dishes and sparkling glassware every time.



Hygienic Storage and Transportation System

Ideal Cleaning and Sanitary Storage

The Washcrate System will protect glassware and keep it clean until the next event, therefore, rewashing is eliminated.



Washcrate Cover
Seals from the Top



Unsanitary Storage

Opened exterior walls allow contaminants such as dirty water, bacteria, insects, dirt, dust and employee fingers pass through the sidewall, contaminating clean glassware requiring costly rewashing and additional handling.



Easy to Handle and Safe to Stack System

Ergonomic Design

Cambro washcrates have built-in handles on each side allowing easy handling. When picking up washcrates, employees' fingers cannot go through closed walls and break fragile glassware, getting them dirty, reducing breakage, risk of injury, and cross contamination.

Edges of washcrates and handles are smooth, flat safe surfaces with no sharp edges or protruding hardware. This provides easier storage as washcrates can slide over each other in stacked storage, while maintaining a sealed, hygienic storage environment.



Unsafe handling



Difficult stacking

Easy Handling

- Easy-to-grip handles are designed for comfort, safe handling and lifting.
- Smooth sides and rounded corners ensure easy carrying and reduce the risk of injury.

Smooth Stacking

- Smooth top edge for smooth and safe stacking.
- Interstacks with existing washcrates from major washcrate manufacturers.
- No need to align with corner pegs, just slide the washcrates over each other.

Inventory Control

Base Washcrate Colours:

	9 compartments Brown (167)
	16 compartments Red (163)
	25 compartments Blue (168)
	36 compartments Soft Gray (151)
	49 compartments Sherwood Green (119)



Difficult product identification

- Colour coding provides an easy system to quickly identify contents.
- Bright colours identify at a glance both contents and quantity per washcrate.

Cost-Efficient System

Closed Outer Wall Systems Increase Cost Savings

Step 1.—Washing



Step 2.—Stacking, Transporting or Storing



Step 3.—Setting up



With Cambro Washcrates, the glassware is washed in the dishwasher, stacked on a Camdolly with a cover on top of the stack to dry and store.

When glassware is needed, employees can easily retrieve and transport to appropriate location. No plastic wrap for storage or rewashing for use.

Saving Costs in:

- Water
- Labor
- Chemicals
- Reduced Breakage
- Electricity
- Set-up Time
- Plastic Wrap

Increase:

- Employee Efficiency
- Employee Safety
- Profits

An Open Outer Wall Design Increases Cost

Step 1.
Washing



Step 2.
Stacking



Step 3.
Covering



Step 4.
Rewashing



Step 5.
Setting up



With open outer wall washcrates, employees wash glassware immediately after use and then wrap the washcrates with plastic wrap for storage. If plastic wrap is not used, employees have to rewash glassware a second time.

Increase Costs in:

- Water
- Chemicals
- Electricity
- Plastic Wrap
- Labor
- Replacement cost from breakage

Decrease:

- Employee Efficiency
- Employee Safety
- Profits

Plastic Wrap

- Compromises hygiene
- Increase costs
- Increases labor
- Is not environmentally friendly

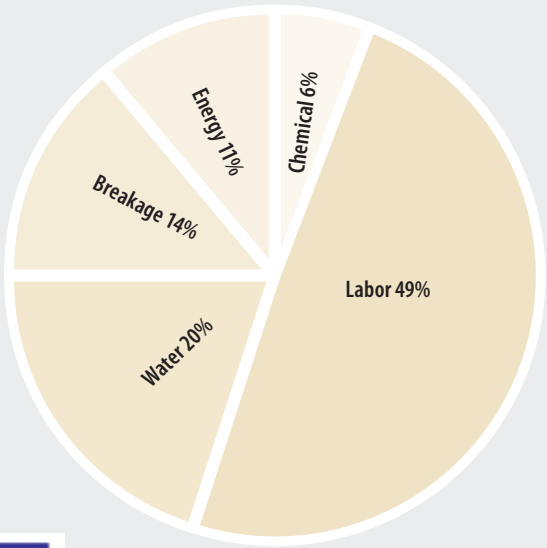
Plastic wrap does not protect glassware from contaminants and must be thrown out after each use.



Overall Cost Savings

Cost of Clean

On average, 25 cents is spent to wash one washcrate full of glassware. With an open wall system, this amount is doubled due to rewashing the glassware after storage. Chart shows the breakdown of costs during the process of washing, storing and transporting glassware and dishes.



ROI Camrack Calculator

EcoSafe **CAMBRO**

Project Name: Date:

Washcrates:

Total Project Investment:

OPEN WASHCRATE

When using an Open Rack, every week, you will have to rewash all pieces of glassware prior to an event.

The average cost to wash one rack is:

How many times would you wash your rack of glassware per week? Once or Twice:

How many racks?

YOU WILL SAVE: € 0.00 Per Rack

IN A BOX

Glassware kept in a protected environment such as a Cambro covered container, will need to be re-washed.

The average cost to wash one rack is:

How many times would you wash your rack of glassware per week? Once or Twice:

For every dish/drink loaded or popped, you need 10 racks to wash all pieces.

Number of Boxes:

YOU WILL SAVE: € 0.00 Per Rack

BREAKAGE

Cambro cover rack racks will help you reduce breakage during handling.

Would you reduce breakage by 10%, 20% or 30% per year?

YOU WILL SAVE: € 0.00 Per Rack

LABOR

You have designed together a system that is going to increase productivity and reduce the number of working hours needed.

How many working hours can you reduce per week? hours/week

YOU WILL SAVE: € 0.00 Per Rack

TOTAL RETURN OF INVESTMENT PER WEEK IN AN AVERAGE WEEK: € 0.00 Per Rack

TOTAL NUMBER OF WEEKS NEEDED TO PAY THE TOTAL INVESTMENT: NEVER! NEVER!

ENERGY SAVINGS

Water Savings: Liters/week

Chemical Savings: Liters/week

Energy Savings: Kw.h/week

Return on Investment Calculator

Investing in the Cambro Warewashing System is a major decision, one that will continually save you money. The ROI Calculator was designed to compare the increased savings when using the washcrate closed wall system compared to using the washcrates with opened walls. By filling out the ROI Calculator, you will be able to measure the savings in the areas listed below and also determine how much time it will take to payback your Cambro Warewashing System investment.

- Number of weeks needed to pay the total investment
- Water savings in liters per week
- Chemical savings in liters per week
- Energy savings in kWh per week
- Labor savings

The Washcrate System offers a measurable ROI and will save you money for years and years of service.

ENERGY SAVINGS

Water Savings: Liters/week

Chemical Savings: Liters/week

Energy Savings: Kw.h/week

Minimize Environmental Impact

Open wall washcrates have a greater negative impact on the environment than the closed, hygienic storage system offered by Cambro Washcrates. Water, chemicals and electricity are consumed at a higher rate by facilities that must rewash after storage. Plastic wrap that is used to protect glassware gets thrown out after each use. Cambro Washcrates minimize environmental impact by reducing

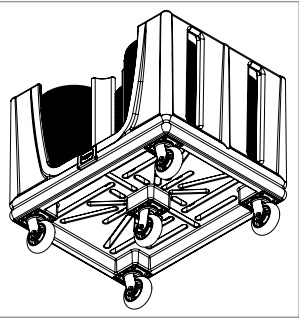
chemical, water and electricity usage in washing and eliminating the need for plastic wrapping to create a sealed environment for glassware. Cambro helps protect your glassware investment while protecting the environment and your bottom line.



Dish Caddies and Service Carts

Adjustable Dish Caddy

- **Unlimited Versability:** allows for many different combinations of plates, bowls and trays.
- **Great Capacity:** with a range of 180 to 480 plates (45 to 60 plates per stack).
- **Ergonomic Design:** with handles built into either side wall for comfortable handling.
- **Durable:** Polyethylene exterior- will not rust, dent or chip.
- **Sanitary:** plastic cover included.



Four x 15,24 cm swivel castors with brakes at each corner. One rigid castor in the center makes it easy to maneuver.



CODE	ADC33
DESCRIPTION	Adjustable Dish Caddy
PLATES PER COLUMN	Approx. 45-60
OVERALL DIMENSIONS W x L x H	76,05 x 98,4 x 83,82 cm
HOLDS	Square, oval and Round Plates from 11 cm to 73,6 cm

ADC33 Instock Colours: Black (110), Dark Brown (131), Slate Blue (401).

Tray & Silver Cart

Use to neatly organize trays and accessories for self-service.

CODE	TC1418
DESCRIPTION	Cart w/Pans & Vinyl Cover
PLATES PER COLUMN	Approx. 180-200 in two stacks
OVERALL DIMENSIONS W x L x H	82 x 54 x 116 cm
HOLDS	Knives, Spoons, Condiments and Trays

TC1418 Instock Colours: Coffee Beige (157), Dark Brown (131).



Service and Utility Carts

Versatile, durable and economically priced. Carts are shipped “knocked down” to minimize shipping costs.

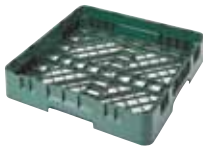


CODE	BC340KD	BC340KDP
DESCRIPTION	Large Utility Cart	Single Shelf Panel Set
LOAD CAPACITY	180 Kg	—
OVERALL DIMENSIONS	L x D x H 101,5 x 54 x 95 cm	W x D x H 80,3 x 45 x 29,8 cm

Cart and Shelf Panel Set Colours: Black (110), Speckled Gray (480).
Trash Container and Silverware Holder Colour: Black (110).



Other Types of Washcrates



DESCRIPTION	*Full Base Washcrate	Full Flatware Washcrate	8 Compartment Half Flatware Washcrate
INSIDE WASHCRATE HEIGHT	6,7 cm	6,7 cm	12 cm
OUTSIDE WASHCRATE HEIGHT	10,1 cm	10,1 cm	18,4 cm
CODE	BR258	FR258	8FBNH434 No Handles

See colour chart on previous page for Base Washcrate colours. **Standard Extender Colour:** Soft Gray (151).
*Available with extenders for additional height requirements.



PEG WASHCRATES	5 x 9 Peg Washcrate	Open End Tray Washcrate
INSIDE WASHCRATE HEIGHT	8,3 cm	8,3 cm
OUTSIDE WASHCRATE HEIGHT	10,1 cm	10,1 cm
CODE	PR59314	OETR314

Washcrate Instock colour: Soft Gray (151).



CUP WASHCRATE	16 Compartment Washcrate		DESCRIPTION	Four Compartment Cutlery Box
MAX. CUP HEIGHT	6,6 cm	10,7 cm	DIM. W x L x H	28,9 x 52 x 9,5 cm
MAX. CUP DIAMETER	11,1 x 11,1 cm	11,1 x 11,1 cm	CODE	1120CBP
CODE	16C258	16C414	Four Compartment Cutlery Box Instock Colour: Dark Brown (131).	

Washcrate Instock colour: Soft Gray (151).
Standard Extender Colour: Soft Gray (151).

Cover and Dolly

Washcrate Cover

- Create a self-contained, portable sanitary storage system.
- its any height or stack of washcrates.
- Eliminate cross contamination and rewashing from plastic wrap or vinyl covers.
- Keeps contamination, insects and rodents out.

Washcrate Camdolly®

- Reduce employee lifting and carrying, reducing possible injury and breakage.
- Made of extremely durable plastic that will not dent, crack, rust or corrode.
- Heavy-duty casters maneuver easily over all types of terrain.



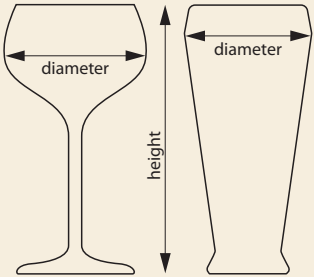
CODE	DIMENSIONS L x W x H	INSTOCK COLOUR
DRC2020	50 x 50 x 2,4 cm	Gray (180)
CDR2020	54,3 x 54,3 x 20,3 cm	Soft Gray (151)

Full Size Washcrates for Stemware & Tumblers

Whatever size and style glassware you have, we have the right glass washcrate to wash, transport and store them. From washing and handling to stacking, storing and transporting, these washcrates offer complete protection for all your delicate and valuable stemware and tumblers.

Choose the correct washcrate:

- 1. Measure the maximum diameter of your glass (stemware or tumbler) to determine the number of compartments.
- 2. Measure the maximum height of your glass (stemware or tumbler) to the top edge of the rim to determine the compartment height.



All washcrates are sold as components: Base Washcrates & Extenders. See Washcrate Component System page.



49 COMPARTMENTS

Ø MAX. DIAMETER (CM)	6,2	6,2	6,2	6,2	6,2	6,2
MAX. HEIGHT (CM)	9,2	13,3	17,4	21,5	25,7	29,8
CODE	49S318	49S434	49S638	49S800	49S958	49S1114
WASHCRATE HEIGHT (CM)	14,3	18,4	22,5	26,7	30,8	34,9



36 COMPARTMENTS

Ø MAX. DIAMETER (CM)	7,3	7,3	7,3	7,3	7,3	7,3
MAX. HEIGHT (CM)	9,2	11,4	13,3	15,5	17,4	19,6
CODE	36S318	36S418	36S434	36S534	36S638	36S738
WASHCRATE HEIGHT (CM)	14,3	14,3	18,4	18,4	22,5	22,5

36 COMPARTMENTS

Ø MAX. DIAMETER (CM)	7,3	7,3	7,3	7,3	7,3	7,3
MAX. HEIGHT (CM)	21,5	23,8	25,7	27,8	29,8	32
CODE	36S800	36S900	36S958	36S1058	36S1114	36S1214
WASHCRATE HEIGHT (CM)	26,7	26,7	30,8	30,8	34,9	34,9

Base Washcrate Colours



119

Sherwood Green



151

Soft Gray



163

Red



167

Brown



168

Blue



25 COMPARTMENTS

Ø MAX. DIAMETER (CM)	8,7	8,7	8,7	8,7	8,7	8,7
MAX. HEIGHT (CM)	9,2	11,4	13,3	15,5	17,4	19,4
CODE	25S318	25S418	25S434	25S534	25S638	25S738
WASHCRATE HEIGHT (CM)	14,3	14,3	18,4	18,4	22,5	22,5

25 COMPARTMENTS

Ø MAX. DIAMETER (CM)	8,7	8,7	8,7	8,7	8,7	8,7
MAX. HEIGHT (CM)	21,5	23,8	25,7	27,9	29,8	32
CODE	25S800	25S900	25S958	25S1058	25S1114	25S1214
WASHCRATE HEIGHT (CM)	26,7	26,7	30,8	30,8	34,9	34,9



16 COMPARTMENTS

Ø MAX. DIAMETER (CM)	11,11	11,11	11,11	11,11	11,11	11,11
MAX. HEIGHT (CM)	9,2	11,4	13,3	15,5	17,4	19,6
CODE	16S318	16S418	16S434	16S534	16S638	16S738
WASHCRATE HEIGHT (CM)	14,3	14,3	18,4	18,4	22,5	22,5

16 COMPARTMENTS

Ø MAX. DIAMETER (CM)	11,11	11,11	11,11	11,11	11,11	11,11
MAX. HEIGHT (CM)	21,5	23,8	25,7	27,9	29,8	32
CODE	16S800	16S900	16S958	16S1058	16S1114	16S1214
WASHCRATE HEIGHT (CM)	26,7	26,7	30,8	30,8	34,9	34,9



9 COMPARTMENTS

Ø MAX. DIAMETER (CM)	14,9	14,9	14,9	14,9	14,9	14,9
MAX. HEIGHT (CM)	9,2	13,3	17,4	21,5	25,7	29,8
CODE	9S318	9S434	9S638	9S800	9S958	9S1114
WASHCRATE HEIGHT (CM)	14,3	18,4	22,5	26,7	30,8	34,9

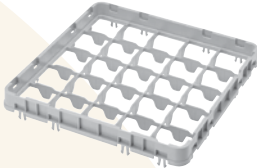
Base Washcrate Colours

119	151	163	167	168
Sherwood Green	Soft Gray	Red	Brown	Blue

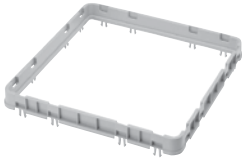
Washcrate Component System



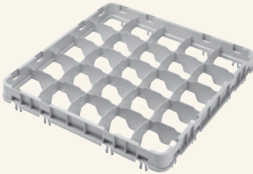
E1 = Full Size Full Drop Compartment Extender



E2 = Full Size Half Drop Compartment Extender



E3 = Full Size Open Extender



E4 = Full Size Full Drop Stemware Extender



E5 = Full Size Half Drop Stemware Extender

Code	Description	Compartment	Inside Washcrate Height	Case Pack
Full Size Full Drop Extenders – E1				
9E1	9-Compartment Full Drop Extender	150 x 150 mm	41 mm	12
16E1	16-Compartment Full Drop Extender	111 x 111 mm	41 mm	12
25E1	25-Compartment Full Drop Extender	89 x 89 mm	41 mm	12
36E1	36-Compartment Full Drop Extender	73 x 73 mm	41 mm	12
49E1	49-Compartment Full Drop Extender	62 x 62 mm	41 mm	12
Full Size Half Drop Extenders – E2				
9E2	9-Compartment Half Drop Extender	150 x 150 mm	41 mm	12
16E2	16-Compartment Half Drop Extender	111 x 111 mm	41 mm	12
25E2	25-Compartment Half Drop Extender	89 x 89 mm	41 mm	12
36E2	36-Compartment Half Drop Extender	73 x 73 mm	41 mm	12
49E2	49-Compartment Half Drop Extender	62 x 62 mm	41 mm	12
Full Size Open Extender – E3				
E3	Open Extender	457 x 457 mm	41 mm	12
Full Size Full Drop Extenders – E4 (Low Profile)				
16E4	16-Compartment Full Drop Extender	111 x 111 mm	41 mm	12
25E4	25-Compartment Full Drop Extender	89 x 89 mm	41 mm	12
36E4	36-Compartment Full Drop Extender	73 x 73 mm	41 mm	12
Full Size Half Drop Extenders – E5 (Low Profile)				
16E5	16-Compartment Half Drop Extender	111 x 111 mm	41 mm	12
25E5	25-Compartment Half Drop Extender	89 x 89 mm	41 mm	12
36E5	36-Compartment Half Drop Extender	73 x 73 mm	41 mm	12

Exterior Dimensions: 499 x 499 x 51 mm Extender Colour: Soft Gray (151)

* All extenders are stocked items

www.cambro.com



CAMBRO U.S.A.
TEL: 1(714) 848-1555
FAX: 1(714) 230-4375
international@cambro.com

CAMBRO NILKAMAL PVT. LTD. (An Indo – U.S. Joint Venture)
TEL: (91) 22 4235 8444
FAX: (91) 22 2681 8083
contact@cambro-nilkamal.com

© Copyright Cambro Manufacturing Company. Printed in the U.S.A.
LITX14RACKIN

