

Plug Into Performance



The UPCH16002 is the heated, portable food transporter that can accommodate 720 servings!

- Perfect for large volume off-premise and satellite feeding
- Holds 16 GN 1/1 (10 cm) Full size food pans
- Vertical vents constantly circulate heat from front to back for consistent temperature

CAMBRO
TRUSTED FOR GENERATIONS™

The UPCH-Series: Performance without Compromise

When you need a hot holding cabinet and a portable insulated transporter, there is no need to compromise. The UPCH-Series family of hot-holding food transporters offers unequalled durability and unmatched performance. No matter the number of people you need to feed or the temperature of the location, there is a UPCH model that will surpass your expectations.

- Gentle, 65° to 74°C non-radiant heat will not cook food and maintains food moisture.
- Holds a wide variety of foods such as pasta, bone-in fried chicken, and double-cruste pies.
- 45-minute preheat time from room temperature.
- Three minute recovery after the door is opened and closed.
- Energy consumption is substantially less than comparable metal cabinets.
- Models with top heated door only offer unique versatility with an electric hot holding cabinet on top and passive hot or cold food holding on the bottom.
- Heated door kits also sold separately to retrofit UPC400, UPC800 and UPC1600.

The UPCH16002 is perfect for:

- ▶ Large events.
- ▶ Applications that require frequent opening and closing.
- ▶ Locations that demand durability.
- ▶ Customers who demand consistent performance.
- ▶ Those looking for a durable and reliable alternative to expensive metal cabinets.



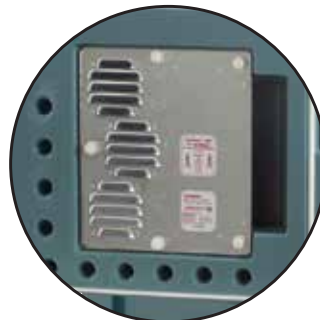
Energy Star

The entire line of UPCH models are Energy Star approved so you can be sure that your UPCH is maximizing its energy use.



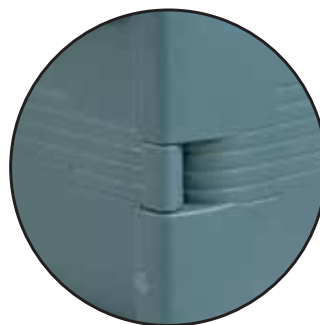
Power On and Heat On Indicators

Communicate the Power and Heating status of the UPCH16002 unit. Know instantly when the compartment has reached target temperature.



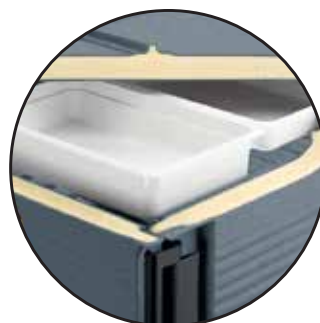
Vertical Vents

Consistent heating throughout the unit is generated by vertical vents that constantly circulate heat from front to back of the cabinet.



Tough Exterior

All UPCH units are made of tough, polyethylene with polyurethane foam insulation to keep heat in while keeping the exterior cool to the touch.



Insulation

CFC-free, foamed-in place polyurethane foam insulation will hold temperature above 65°C for over 4 hours when used unplugged.

UPCH4002 and UPCH8002 units have a built-in thermometer that easily removes for cleaning. The UPCH16002 has an external digital thermometer that displays the internal temperature.



ON/OFF Switch allows for convenient powering on/off without unplugging the power cord.

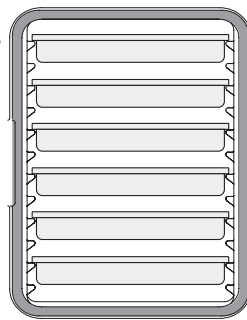


Molded-in bumpers offer added protection.

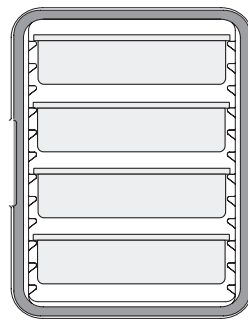
UPCH-Series Capacity Guide

FRONT LOADERS

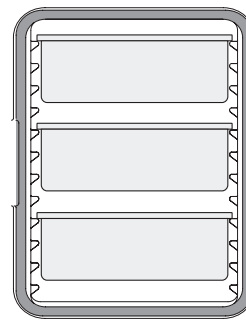
- UPCH400
- UPCH4002
- UPCH800 (x2)
- UPCH8002 (x2)
- UPCH1600 (x4)
- UPCH16002 (x4)



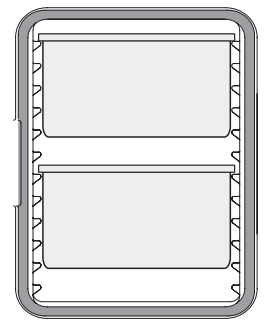
6,5 cm
(Per Cabinet)



10 cm
(Per Cabinet)

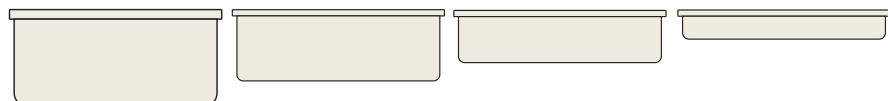


15 cm
(Per Cabinet)



20 cm
(Per Cabinet)

Food Pan Portion Guide



GN $\frac{1}{2}$ Food Pan

	20 cm	15 cm	10 cm	6,5 cm
Depth	20 cm	15 cm	10 cm	6,5 cm
Capacity	25,6 L	19,5 L	13 L	8,5 L
Serving Portions Per Pan (280 mL)	80	60	40	30

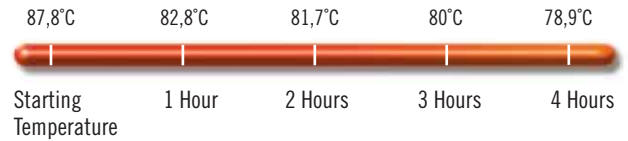
Ultra Camcart® H-Series

MODEL	UPCH400 / UPCH800 110V MODELS	UPCH4002 / UPCH8002 220V MODELS	UPCH1600 110V MODELS	UPCH16002 220V MODELS
Electrical Specifications				
Required Voltage	100 - 120 V	200 - 230 V	100 - 125 V	200 - 230 V
Maximum Amp	2,0 A	1,2 A	4,6 A	2,3 A
Watts	230 W	265 W	529 W	506 W
Hertz	50/60	50/60	50/60	50/60
Plug Types	NeMa 5-15P	Euro plug, CEE7	5-15P to C15RA	CEE7/7 to C15RA
Alternate Plug / Connector types (for special locations)	C15/C16	C15/C16	JIS8303 to C15RA (Japan)	BS1363 to C15RA (UK & Ireland+more)
Power Cord Length	2,7 m	2,7 m	2,7 m	2,7 m

HOT HOLDING	65°C - 74°C
WARM UP TIME (from ambient to temperature)	to 65°C in 45 Minutes from 24,4°C
RECOVERY TIME* (time to recover to temperature after door is held open for 30 seconds)	3 Minutes
TRANSPORT TIME* (after reaching temperature, amount of time unit can be held passively/unplugged until contents reach 65°C.)	4+ Hours

*Based on test with 6 each, 15 cm deep H-pans with Griplids® filled with approx. 14,2 L of 87,7°C water. (Temperatures are of the water not the air in the cart)

Hot Holding Unplugged UPCH16002



CODE	DESCRIPTION	EXTERIOR DIMENSIONS W x D x H	COMPARTMENT DIMENSIONS W x D x H	CASE KG. (M³)
UPCH400	Heated Ultra Pan Carrier®, 110V	46 x 67 x 63 cm	33,5 x 53,3 x 48,6 cm	20,45 (0,225)
UPCH4002	Heated Ultra Pan Carrier, 220V	46 x 67 x 63 cm	33,5 x 53,3 x 48,6 cm	20,45 (0,225)
UPCH800	Heated Ultra Camcart, 110V	52 x 69 x 137,2 cm	33 x 54,5 x 48,5 cm	43,36 (0,563)
UPCH8002	Heated Ultra Camcart, 220V	52 x 69 x 137,2 cm	33 x 54,5 x 48,5 cm	43,36 (0,563)
UPCH1600	Heated Ultra Camcart, 110V	73 x 84,7 x 137,5 cm	53,5 x 66,5 x 53,5 cm	88,2 (0,942)
UPCH16002	Heated Ultra Camcart, 220V	73 x 84,7 x 137,5 cm	53,5 x 66,5 x 53,5 cm	88,2 (0,942)
UPCHT1600	Ultra Camcart with Heated Top Door Only, 110V	73 x 84,7 x 137,5 cm	53,5 x 66,5 x 53,5 cm	81,9 (0,942)
UPCHT16002	Ultra Camcart with Heated Top Door Only, 220V	73 x 84,7 x 137,5 cm	53,5 x 66,5 x 53,5 cm	81,9 (0,942)
UPCHTD1600*	Heated UPCH1600 Replacement/UPC1600 Retrofit Top Door, 110V	66,8 x 10,8 x 53,3 cm	–	11,5 (0,047)
UPCHTD16002*	Heated UPCH1600 Replacement/UPC1600 Retrofit Top Door, 220V	66,8 x 10,8 x 53,3 cm	–	11,5 (0,047)
UPCHBD1600*	Heated UPCH1600 Replacement/UPC1600 Retrofit Bottom Door, 110V	66,8 x 10,8 x 53,7 cm	–	11,5 (0,047)
UPCHBD16002*	Heated UPCH1600 Replacement/UPC1600 Retrofit Bottom Door, 220V	66,8 x 10,8 x 53,7 cm	–	11,5 (0,047)
UPCHTR1600	Heated Ultra Camcart, Tamper Resistant, 110V	73 x 84,7 x 137,5 cm	53,5 x 66,5 x 53,5 cm	89,5 (0,942)
UPCHTR16002	Heated Ultra Camcart, Tamper Resistant, 220V	73 x 84,7 x 137,5 cm	53,5 x 66,5 x 53,5 cm	89,5 (0,942)

Case Pack: 1. *NOTE: UPCH1600(2) top and UPCH1600(2) bottom replacement/retrofit doors are not interchangeable.

UPCH1600(2) Casters: 15,2 cm - 2 fixed, 2 swivel, 1 with brake.

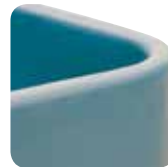
UPCH800(2) Casters: 12,7 cm - 2 fixed, 2 swivel, 1 with brake.



Granite Gray (191)



Granite Green (192)



Slate Blue (401)



Dark Brown (131)



Black (110)



CAMBRO
TRUSTED FOR GENERATIONS™

CAMBRO U.S.A.
TEL: (714) 848-1555
FAX: (714) 230-4375
international@cambro.com

CAMBRO EUROPEAN LOGISTICS
TEL: (49) 7022 90 100 0
FAX: (49) 7022 90100 19
cambroeurope@cambro.com

CAMBRO NORTH IRELAND & UK
TEL: 0800 587 0057 Toll Free
FAX: 0845 280 3411
cambrouk@cambro.com

CAMBRO IRELAND
TEL: 1800 509 046 Toll Free
FAX: 01 633 55 76
cambroireland@cambro.com

© Copyright Cambro Manufacturing Company. Printed in the U.S.A.

LITX14UPCH16ENG



1011414