

# A New Dimension in Safe Drying



Camshelving® Premium Series



Camshelving Elements Series



- Promotes fast and sanitary drying, while maximizing space.
- Non-corrosive, break-resistant and easy to assemble.
- More cost-efficient than metal alternatives.

**CAMBRO**  
TRUSTED FOR GENERATIONS™



[www.cambro.com](http://www.cambro.com)

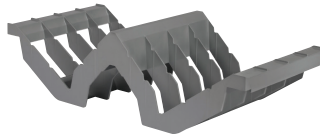
# One Solution for Many Drying Needs

The Angled Drying Rack eliminates the concerns associated with metal alternatives including replacement cost caused by deterioration. This complete, non-corrosive drying rack provides foodservice operators with a versatile, cost-effective and space-efficient solution for sanitary drying, storage and ease of mobility. Available in mobile Camshelving® Premium Series and Camshelving Elements Series.

- Light-weight, break-resistant and easy to assemble.
- Securely holds a variety of pans, pots and kitchen wares.
- Mobile unit allows for easy floor clean-up and mobility.
- Removable 8-slot Drying Cradles are made of high impact ABS material.
- Lifetime warranty against rust and corrosion on posts and traverses.



Camshelving Premium Series



The 8-Slot Drying Cradles are available separately to convert existing units to Angled Drying Racks\*.

## Reference Guide for Food Pan Drying

GN SIZE	QTY/RACK
1/1	16
1/2	32
1/3	48
1/4	64

Quantity will vary based on size combination and placement.

CODE	DESCRIPTION	PRODUCT DIMENSIONS D x L x H	CASTERS	CASE LBS. (CUBE) CASE KG. (CUBE M <sup>3</sup> )	CASE PACK
<b>Camshelving Premium Series</b> CPMU244875PDPKG**	Angled Drying Rack	24" x 48" x 75" (610 x 1220 x 1910 mm)	4 Premium Casters (2 Swivel with Total Locking Brake, 2 Swivel with No Brake)	118.35 (25.2) 53,8 (0,71)	1
<b>Camshelving Elements Series</b> EMU244878PDPKG**	Angled Drying Rack	24" x 48" x 78" (610 x 1220 x 1980 mm)	4 Premium Casters (2 Swivel with Total Locking Brake, 2 Swivel with No Brake)	92.55 (24.26) 42,1 (0,68)	1
<b>Drying Cradle</b> CSDR8	8-Slot Drying Cradle	23 <sup>5</sup> / <sub>16</sub> " x 10 <sup>3</sup> / <sub>8</sub> " x 6 <sup>5</sup> / <sub>16</sub> " (592 x 263 x 160 mm)	—	2.20 (1.07) 1,00 (0,03)	1
<b>Drying Cradle</b> CSDR84	8-Slot Drying Cradle - 4 Pack	23 <sup>5</sup> / <sub>16</sub> " x 10 <sup>3</sup> / <sub>8</sub> " x 6 <sup>5</sup> / <sub>16</sub> " (592 x 263 x 160 mm)	—	10.30 (2.32) 4,68 (0,06)	4

**Camshelving Premium Series Color:** Speckled Gray (480). **Camshelving Elements Series Color:** Brushed Graphite (580). **8-Slot Drying Cradle Color:** Soft Gray (151).

Drying Cradle is Patent Pending.

\*Individual Drying Cradles fit on Camshelving Premium, Elements and Basics Series 24" (610 mm) deep shelves only, mobile or stationary.

### \*\*Each Package Includes:

#### Camshelving Premium Series

1 box of 2 each pre-assembled post sets, 8 traverses and 4 premium casters.

4 boxes of 4 each Drying Cradles.

#### Camshelving Elements Series

1 box of 2 each pre-assembled post sets, 8 mobile traverses and 4 premium casters, 1 bag of 32 mobile dovetails (16A, 16B).

4 boxes of 4 each Drying Cradles.



Telephone 714 848 1555 Toll Free 800 854 7631 Customer Service 800 833 3003

© Cambro Manufacturing Company 5801 Skylab Road, Huntington Beach, California 92647-2056

LIT1516 Printed in USA 07/15.