

# Underground Fiberglass Tank Sumps

CONTAINMENT  
SOLUTIONS

CSI US PAT. NO. 6,006,390

98C01736SSR37

270 LBS

Fiber Glass Systems | **NOV**



Containment Solutions™ Tank sumps are protective enclosures for pumps, piping and other accessories above the tank top. Tank sumps should be watertight and durable since they will protect the surrounding environment in the event of a piping leak.

For over 20 years Containment Solutions has been perfecting the fiberglass tank sump design and installation process creating the most reliable and contractor friendly sump line available. Our proven technology has been utilized in thousands of installations.

### **Reasons for choosing a Containment Solutions Tank Sump**

- 30-Year structural and corrosion warranty
- Extensive fuel compatibility
- Contractor friendly EZ-Fit adhesive channel
- Watertight lids and joints





# Containment Solutions Tank Sumps

## Full Line of Protection

Protecting your storage system and the surrounding environment starts with selecting the right storage tank but the tank only protects the product it contains. A complete fuel storage system should also include protecting the components that connect to the tank. Pumps and piping often require annual or semi-annual maintenance and testing. Once buried, the components are difficult to access and impossible to safeguard without watertight tank sumps.

Our tank sumps are available in 42, 48, and 54 in. diameters.

## Single-Wall Tank Sumps

Our tank sumps are manufactured using the same technology as our fiberglass tanks. We use a special blend of glass and resin which is carefully metered during fabrication to ensure a consistent wall thickness.

Most of our non-corrosive fiberglass tank sumps are light enough to be installed without mechanical equipment, and all are durable enough to protect critical components for decades. Tank sumps typically fit on the same truck as the tank which reduce shipping expenses, and like our tanks, our sumps with EZ-Fit adhesive channels carry a 30-year structural and corrosion warranty, which is the most comprehensive coverage in the industry.

## Double-Wall Tank Sumps

We have earned a reputation for double-wall reliability as a result of our hydrostatic tank monitoring technology. We have simply adapted the same expertise to the fiberglass tank sump. Our double-wall tank sumps were designed to satisfy current regulations while anticipating future requirements.

Competitor sumps bond the inner and outer sump walls with fiberglass fabrics which often cause communication errors triggering false alarms in the monitoring system. Our double-wall sumps are built with 100% separation between sump walls. This open environment offers an unobstructed pathway for fluid monitoring which means 360° protection and true secondary containment.



Single-Wall Tank Sump Joint

## Watertight Dependability

Our single and double-wall tank sumps utilize a unique EZ-Fit adhesive channel, facilitating a permanent and watertight joint.

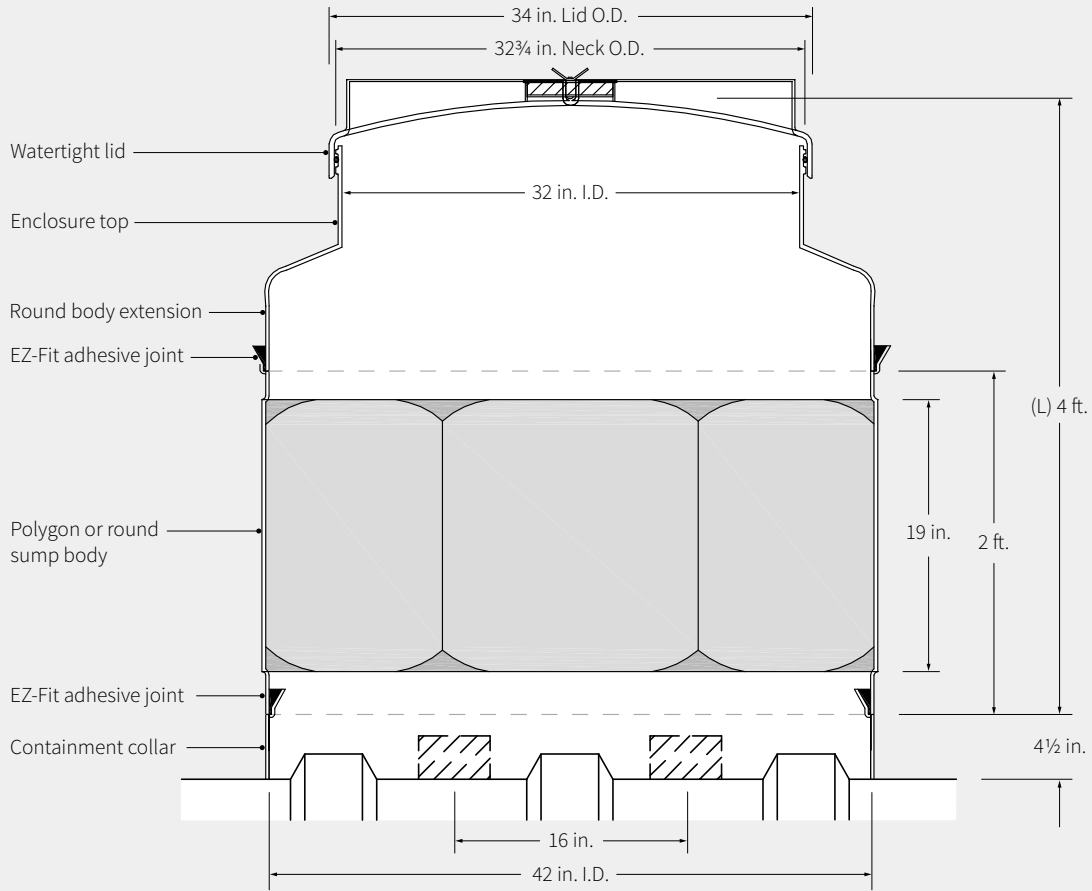
The joint allows sumps to be installed in manageable pieces making installation more convenient and avoiding confined space requirements.



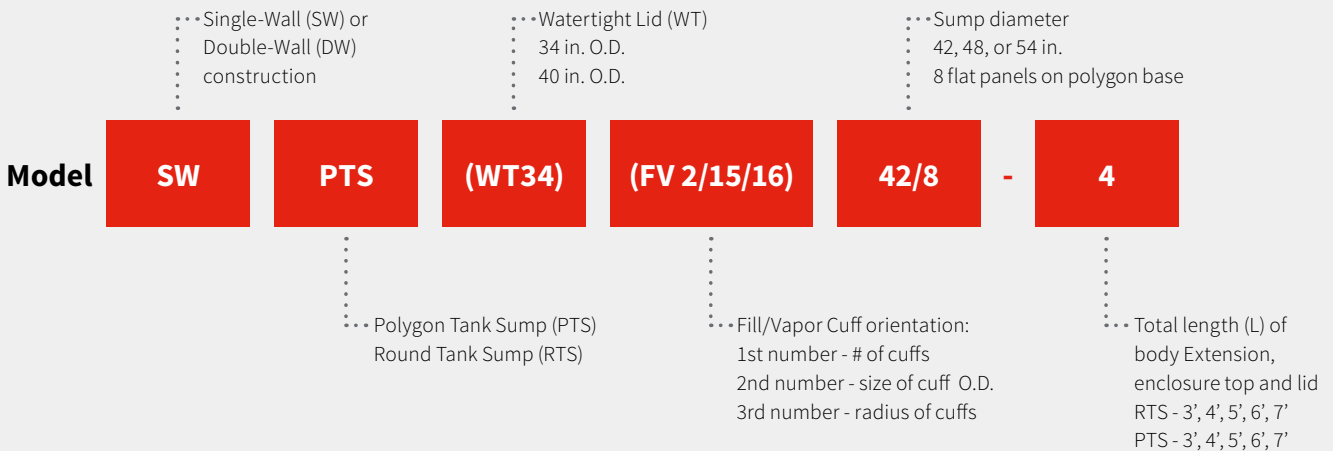
Double-Wall Tank Sump Joint

# Typical Sump Design

## Single-Wall Tank Sump with Fill/Vapor Lid - Model: SW PTS (WT34) (FV 2/15/16) 42/8 - 4



## Tank Sump Options



## Containment Collars

The protection of storage system components above the tank top begins with the containment collar. Our Containment Solutions containment collars are factory bonded to the tank wall and are available in single and double-wall models. The containment collars are built to fit our tank sumps and come with an EZ-Fit adhesive channel for hassle free installation. Double-wall containment collars, when combined with our Containment Solutions containment collars double-wall sumps will continuously monitor the entire containment area for leaks from tank top to grade providing secondary containment for spilled liquids.

## Polygon Body

Our tank sump bodies are available in both round and polygon shapes. Polygon body styles are octagonal with 8 flat sides which allows piping to penetrate the sump at 45° and 90° angles. Electrical connections, submersible pumps, anything protected by the sump can be accessed easier using a flat-paneled polygon sump body.

## Round Body Extension and Enclosure Top

Round fiberglass sump body extensions are available in one foot increments to accommodate the final tank burial depth.

The enclosure top is a factory bonded transition point from the body extension to the lid and includes a watertight gasket. The enclosure top and lid are designed to fit inside standard manholes at grade.

On hydrostatic double-wall models, the enclosure top includes a built in reservoir which houses a sensor for electronic monitoring.



Fill/Vapor lids come in two popular cuff sizes and include an observation port as a standard feature.

## Testable Sump Lid

Watertight tank sumps are vacuum testable with the purchase of a testable sump lid. The ability to vacuum test is an efficient way of managing periodic sump testing and avoids costly disposal expenses of traditional integrity tests.

The lid is equipped with quick-connect fittings exclusively designed for the Containment Solutions Watertight Test Kit. The kit includes a vacuum gun, gauge, and a bi-metal thermometer to monitor temperature change during the test.



# Watertight Lids

## Watertight Sump Lid Assemblies

Selecting the right single-wall or double-wall tank sump has never been easier. You simply choose the sump dimensions and level of protection you need for your project and then choose the lid based on the tank configuration.

## Turbine Tank Sump Lids

Turbine tank sump lids are used at the submersible turbine end of the tank when access is infrequent and the area must be watertight. The turbine lid is made of rigid fiberglass and fits into place by simply pushing down on the lid.

## Fill/Vapor Tank Sump Lids

Fill/Vapor tank sump models are available for the fill end of the tank when multi-port manholes are used. We offer two access opening options to accommodate the most popular shroud boots and spill containment systems. 40 in. Quad Fill lids are also available for 48 in. and 54 in. tank sumps, contact a representative for more information.

All configurations include an observation port allowing easy access for internal sump inspections.

## Water Tested and Watertight

Each lid assembly is tested to 1' of hydrostatic head pressure to ensure a watertight seal. Accessing a 34 in. lid (any model) is possible through a standard 36 in. manhole, and 40 in. lids through 42 in. manholes.

## Optional Inspection Port



Makes walk through inspections a breeze



Provides easy access to the float sensor

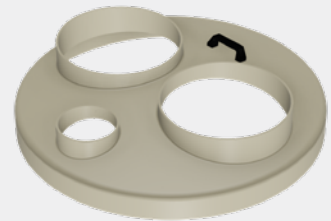
Turbine Lid



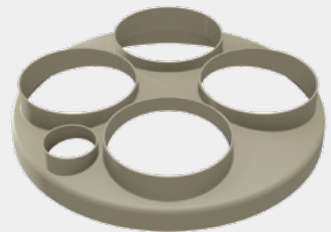
Fill/Vapor Lid with 15 in. access openings and 6 in. observation port



Fill/Vapor Lid with 13 in. access openings and 6 in. observation port



Quadfil Lid



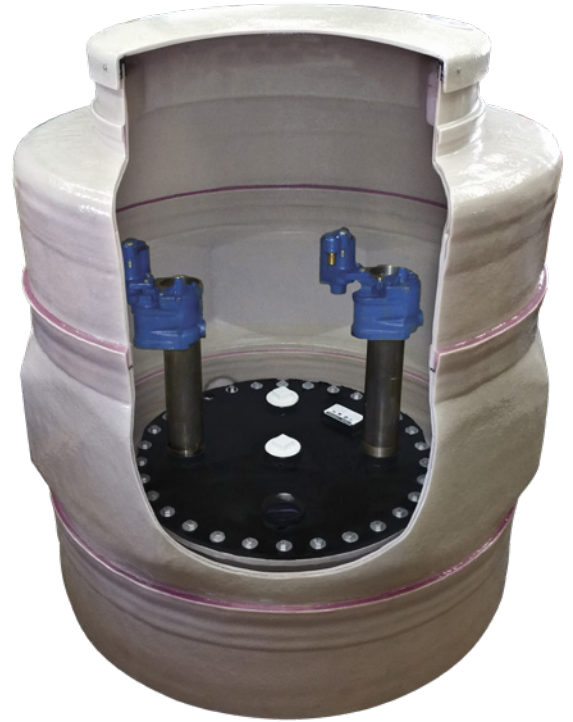
# 54 inch Double-Wall Tank Sumps for large Capacity Storage Systems

## Full Line of Protection

Underground petroleum storage tanks are not getting any smaller and as capacity grows, so does the need for larger tank sumps. To meet market demand, Containment Solutions offers a 54 in. double-wall tank sump. The spacious interior eliminates the need for a second tank sump in dual submersible or high capacity pump applications. Fitting two pumps on one tank manway saves significant time and money.

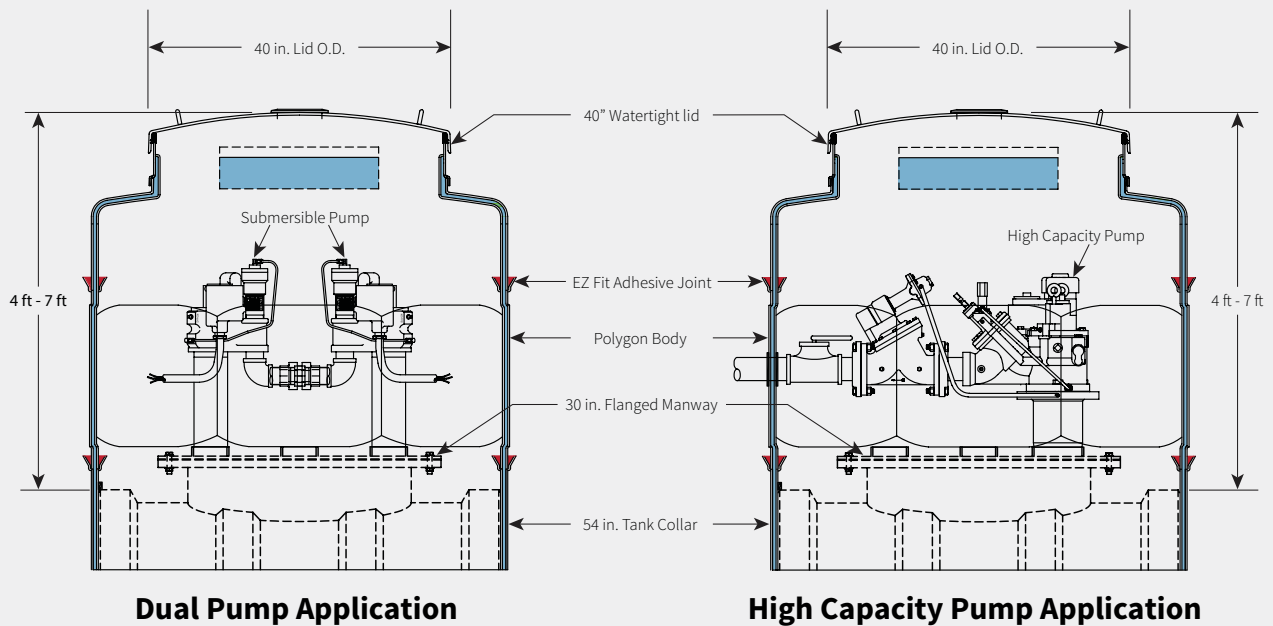
Our 54" tank sump is ideal for high capacity pump applications which can be difficult to install in smaller 42 in. or 48 in. tank sumps. The larger sump option is an easier and safer alternative, providing ample space for installing pumps and piping.

The sump features a 40 in. lid ensuring maximum access from grade through a standard 42 in. manhole, beneficial for routine maintenance. The 40 in. lid is available in watertight or friction fit models with an optional 4 in. inspection port.



Our 54in. tank sumps are often used with dual pump application such as industrial backup generator systems. High capacity pump application configuration is also available.

## Typical Applications





NOV Inc. has produced this brochure for general information only, and it is not intended for design purposes. Although every effort has been made to maintain the accuracy and reliability of its contents, NOV Inc. in no way assumes responsibility for liability for any loss, damage or injury resulting from the use of information and data herein. All applications for the material described are at the user's risk and are the user's responsibility.

© 2022 NOV Inc. All rights reserved.  
JIRA 16660

**Corporate Headquarters**  
7909 Parkwood Circle Drive  
Houston, Texas 77036  
USA

**Fiber Glass Systems**  
17115 San Pedro Ave., Suite 200  
San Antonio, Texas 78232  
USA

**Containment Solutions Products  
Headquarters**  
500 Conroe Park West Drive  
Conroe, Texas 77303  
USA  
Phone: 936.756.7731