

Directions for use of EndoSwab



Long swab for cleaning verification of endoscopes

Catalog Number: ENDOSWAB 100 Swabs

Description and Intended Use

The EndoSwab is used to collect samples from hard to reach internal channels of reusable medical instruments like endoscopes to verify thorough cleaning. The EndoSwab sampling device is designed to be used in conjunction with UltraSnap or SuperSnap ATP surface testing devices and SystemSURE or EnSURE luminometers.

This system measures adenosine triphosphate (ATP), the universal energy molecule found in all animal, plant, bacterial, yeast and mold cells. Blood and other biohazard waste contain large amounts of ATP.

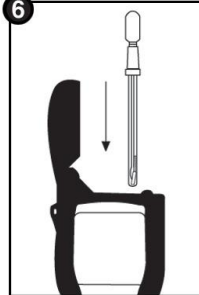
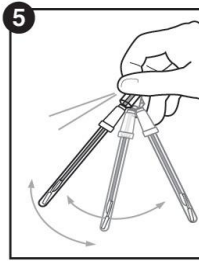
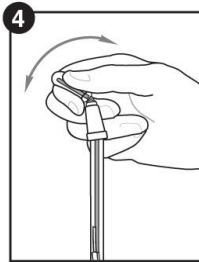
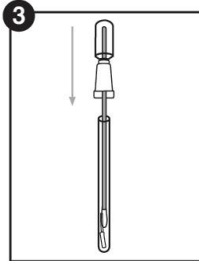
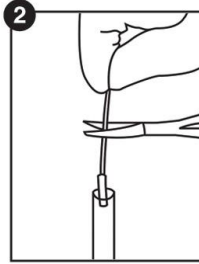
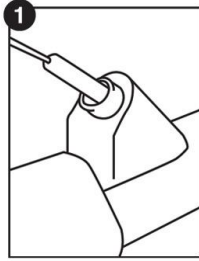
When ATP is brought into contact with the unique liquid-stable Luciferase/ Luciferin reagent in the testing device, light is emitted in direct proportion to the amount of ATP present. The Hygiena luminometers measure the amount of light generated in Relative Light Units (RLU) and provide information on the level of ATP left behind after cleaning; ensuring scopes and other instruments are safe for use and the cleaning procedures are effective. After cleaning, all sources of ATP should be significantly reduced.

Testing Materials required (not included)

1. Testing devices (Ultrasnap, Cat # US2020 or SuperSnap Cat # SUS3000)
2. Hygiena Luminometers (SystemSURE Plus Cat # SS3H or EnSURE Cat # ENSURE)

Instructions for use

1. [Wear sterile gloves when collecting a sample; make sure to use aseptic techniques.] Remove EndoSwab from sterile packaging. Feed the EndoSwab through the scope channel. Leave sufficient slack to grip the tail end of the wand.
2. Withdraw the EndoSwab completely out of the scope. Place the foam tip into the open Ultrasnap or SuperSnap tube. Using a clean (autoclaved or wiped with alcohol) pair of scissors, cut the sampling foam tip off the wand (about 3 – 5 mm above the foam tip); so that the foam tip drops into the testing device. Ensure that the foam tip is at the bottom of the testing device. [Note: Placing the tube covering the swab in a test tube holder makes placing the EndoSwab end in the tube and cutting the wand easier]
3. Replace the testing device swab back in the swab tube. The sample can be left for up to 4 hours before activating the device; however, once activated the sample must be read in the luminometer within 60 seconds.
4. To activate the device hold the swab tube firmly and use the thumb and forefinger to break the Snap Valve pin by bending the bulb forward and backward. Squeeze the bulb 5 times, expelling all liquid down the swab shaft.
5. Bathe the EndoSwab foam tip in test solution by gently shaking for 10 seconds. Insert the testing device into the Hygiena luminometer and close the lid.
6. Read the results by pressing "OK". Results should be read within 60 seconds after activation. Please refer to the luminometer manual for operating instructions



Hygiena recommends setting RLU thresholds according to the standards of your facility. To find out how to determine the correct threshold settings, go to the resource center at www.hygiena.com to view recommended practices or call one of our technical representatives.

Precautions and Warnings

- a. Avoid touching the foam tip when obtaining sample.
- b. It is important to cut off the foam tip wand about 3 – 5 mm from foam tip end to ensure the foam tip is at the bottom of the testing tube.
- c. Hold the testing device upright when activating.
- d. Hold the luminometer upright when taking readings. [Note: Refer to kit insert for testing device].
- e. Users must establish and validate threshold limits for their application.

Storage and Shelf Life

Refer to Box flap for expiration date. EndoSwab can be stored at room temperature (20 - 25°C).

Safety

The components of testing devices do not pose any risk to health when used in accordance with the procedures of this insert. For further safety instructions refer to product MSDS.

More Information

If more information is required, please visit us at www.hygiena.com or contact us at:

Hygiena USA

941 Avenida Acaso,
Camarillo, CA 93012
Phone: 805.388.8007
Fax: 805.388.5531

Email: enquiries@hygiena.com

Hygiena International

Unit 11 Wenta Business Centre,
Colne Way Watford,
Hertfordshire WD24 7ND UK

Phone: + 44 (0) 1923 818821
Fax: +44 (0) 1923 818825
Email: enquiries@hygiena.com

Interpreting Results

RLU Limits for EndoSwab Tested with	Pass	Fail
UltraSnap and SystemSURE Plus	0 - 45	46+