

DuraHard® Cable and Clamp Coating

PRESERVATION SOLUTION FOR ELECTRIC SUBMERSIBLE PUMP SYSTEM CABLE AND CLAMPS

OVERVIEW

Continuous power to electric submersible pump (ESP) systems require reliable and durable electrical cable. The cable must withstand heat, corrosion, and abrasion downhole, plus physical damage during transport, handling, and installation.

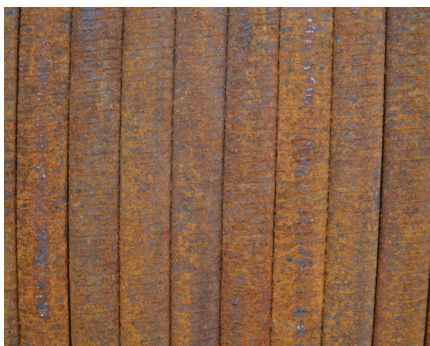
For galvanized armor cable and clamp preservation, Summit ESP® – a Halliburton Service offers a complete solution to protect your asset investment.

DURAHARD® CABLE AND CLAMP COATING

Our proprietary DuraHard cable and clamp coating shields vulnerable surfaces from corrosion and oxidation, adding shelf life to stored cable or clamps up to one year.

To increase the shelf life of the armor coating, this process is most effective when coating is applied immediately after cable is pulled and sent to storage.

To handle coating high volumes of cable efficiently, uniformly, and continuously, we use our patented, unique rotisserie coating applicator.



Top » Cable coating process

Bottom left » Before cable coating

Bottom right » After cable coating

Cable Engineering Information

Family	Conductor	Insulation Type	Insulation Covering	Jacket Type	Jacket Covering	Configuration	Armor	Min. Temp	Max. Temp	Gas Apps
Avenger® MLE	Copper	KK-EPDM	—	Lead	Tape and Braid	Flat	MONEL®	-40°F (-40°C)	450°F (232°C)	High H ₂ S and CO ₂
SELF	Copper	EPDM	—	Lead	Tape	Flat	MONEL®	-40°F (-40°C)	450°F (232°C)	High H ₂ S and CO ₂
SELF-HL	Copper	EPDM	—	Heavy Lead	Tape	Flat		-40°F (-40°C)	450°F (232°C)	High H ₂ S and CO ₂
SELF-HLB	Copper	EPDM	—	Heavy Lead	Tape	Flat		-40°F (-40°C)	450°F (232°C)	High H ₂ S and CO ₂
SELR	Copper	EPDM	—	Lead	Tape / EPDM	Round		-40°F (-40°C)	450°F (232°C)	High H ₂ S and CO ₂
SELR-HL	Copper	EPDM	—	Heavy Lead	Tape / EPDM	Round		-40°F (-40°C)	450°F (232°C)	High H ₂ S and CO ₂
SEER	Copper	EPDM	DBL-T	EPDM	—	Round		-60°F (-51°C)	400°F (204°C)	Moderate
SENR	Copper	EPDM	DBL-T	Nitrile	—	Round	Galvanized Steel, Stainless Steel	-30°F (-34°C)	285°F (140°C)	Moderate
SENF	Copper	EPDM	—	Nitrile	Tape and Braid	Flat		-30°F (-34°C)	280°F (137°C)	Moderate
SPLF	Copper	PP	—	Lead	Tape	Flat		-40°F (-40°C)	250°F (121°C)	High H ₂ S and CO ₂
SPLF-HL	Copper	PP	—	Heavy Lead	Tape	Flat		-40°F (-40°C)	250°F (121°C)	High H ₂ S and CO ₂
SPLF-HLB	Copper	PP	—	Heavy Lead	Tape	Flat		-40°F (-40°C)	250°F (121°C)	High H ₂ S and CO ₂
SPNF	Copper	PP	—	Nitrile	Tape and Braid	Flat		-30°F (-34°C)	205°F (96°C)	Low
SPNR	Copper	PP	—	Nitrile	—	Round		-30°F (-34°C)	205°F (96°C)	Low
CAP	—	Capillary tubing is adaptable to all product lines				Flat or Round		Specific to cable family		

Definitions

CAP: Capstring	SELF: Summit EPDM Lead Flat	SENR: Summit EPDM Nitrile Round
DBL-T: Double Tape	SELF-HL: Summit EPDM Lead Flat-Head Lead	SPLF: Summit Polypropylene Lead Flat
EPDM: Ethylene Propylene Diene Monomer	SELF-HLB: Summit EPDM Lead Flat-Head Lead Barrier	SPLF-HL: Summit Polypropylene Lead Flat-Heavy Lead
HT: High Temperature	SELR: Summit EPDM Lead Round	SPLF-HLB: Summit Polypropylene Lead Flat-Heavy Lead Barrier
KK-EPDM: 2 Layers of Kapton®	SELR-HL: Summit EPDM Lead Round	SPNF: Summit Polypropylene Nitrile Flat
MLE: Motor Lead Extension	SEER: Summit EPDM Round	SPNR: Summit Polypropylene Nitrile Round
PP: Polypropylene	SENF: Summit EPDM Nitrile Flat	Avenger® MLE: 400 Series Only

For more information, contact your local Halliburton representative or visit us on the web at www.halliburton.com/summitesp

Sales of Halliburton products and services will be in accord solely with the terms and conditions contained in the contract between Halliburton and the customer that is applicable to the sale.

H013467 04/20 © 2020 Halliburton. All Rights Reserved.