

Brazil

# Intercept® retrievable bridge plug successfully isolates deepwater well for 780 days

Longest temporary well suspension to date with this technology

## CHALLENGES

- Lower completion installed in deepwater well.
- Delayed delivery of upper completion equipment.
- Temporarily suspend well using V0-qualified retrievable bridge plug.

## SOLUTION

- The API 11D1 V0-qualified Intercept® retrievable bridge plug met all operator requirements for temporary well suspension.

## RESULTS

- Deployed and installed the Intercept retrievable bridge plug for 780 days until successful retrieval.
- Upper completion equipment delay led to significantly longer than expected temporary abandonment.
- Longest temporary abandonment using the Intercept retrievable bridge plug to date.

## Overview

Faced with upper completion delivery delays, the operator of a deepwater well in Brazil required a temporary abandonment solution to isolate the lower completion. Halliburton recommended the Intercept® retrievable bridge plug to provide the necessary well suspension barrier until the upper completion equipment arrived onsite.

## Challenge

After lower completion installation, a deepwater well drilled to a depth of approximately 6,000 ft (1,829 m) necessitated temporary abandonment while waiting for the upper completion equipment to arrive. Safe suspension required an API 11D1 V0-rated retrievable bridge plug to provide a temporary barrier. However, the tool was not intended to remain in the well for an extended period.



HAL121817

Intercept® Retrievable  
Bridge Plug

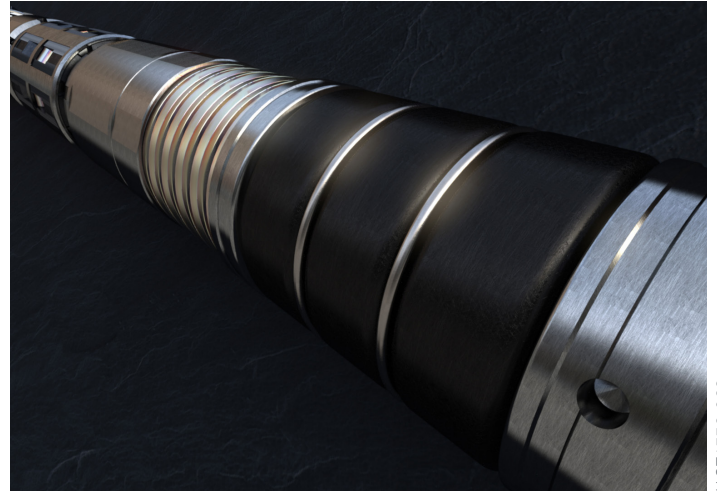
## CASE STUDY

### Solutions

Halliburton provided a 10 3/4-in. Intercept® retrievable bridge plug, which met the operator requirement for a reliable API 11D1 V0-rated barrier. A Halliburton service specialist set the plug at approximately 7,300 ft (2,225 m) at an inclination of approximately 22 degrees, with minimal hang weight below, and successfully pressure tested the tool to 5,500 psi.

### Results

The Intercept retrievable bridge plug provided a mechanical isolation solution for 780 days. Halliburton successfully retrieved the tool upon arrival of the upper completion equipment. This record-setting well suspension proved the Intercept retrievable bridge plug provides a reliable, gas-tight barrier for both short and long-term temporary abandonment operations.



HCT1779-069

Intercept® Retrievable Bridge Plug

For more information on Halliburton geothermal services, please go to [halliburton.com/geothermal](https://halliburton.com/geothermal)

At Halliburton we collaborate and engineer solutions to maximize asset value for our customers. All products and service solutions are available as integrated offerings or as discrete services, based on customer requirements.

H014554 04/24 ©2024 Halliburton. All Rights Reserved.

[halliburton.com](https://halliburton.com)

**HALLIBURTON** | Completion  
Tools