

**BENEFITS**

- High-pressure rating suited for deep water
- High-shot density with maximum phasing delivers a high-flow area of 14.7 sq. in./ft
- Reduces risk of screen washout by reducing pressure drawdown and flow rate per perforation
- Reduces risk of sanding production due to drag from fluid or gas turbulence
- Shot phasing that limits stress contrast, which helps prevent tunnel-to-tunnel stress failures
- Maximized gun size with fishing ability in heavier wall casings

**APPLICATIONS**

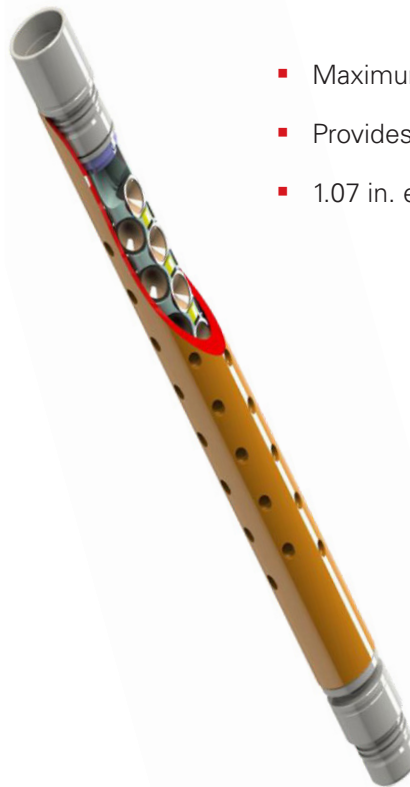
- Provides an effective perforation solution focused on:
  - Deep water
  - Sand control completions
  - Stimulation completions
  - Natural completions
- Can eliminate potential costs associated with sand production without mechanical segregation techniques

 PERFORATING SOLUTIONS

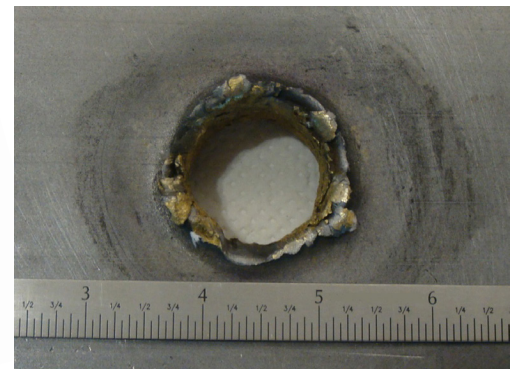
## 6¾-in. 18-SPF MaxForce® flow system

### Integrated cased hole

The increased flow area of the 6¾-in. 18-SPF MaxForce® Flow System enhances both conventional and flux-based completion approaches. Maximizing the flow area reduces the pressure drop across the perforations and the effective force on the individual sand grains, resulting in fewer screen washouts and less potential for sand production. All of this is achieved without sacrificing fishing ability in heavy wall casings.



- Maximum flow area
- Provides extensive flow area of 14.7 sq.in./ft
- 1.07 in. entry hole per perforation



6¾-in. 18-SPF MaxForce® flow system



**6¾-in. 18-SPF MaxForce® flow system specifications****SYSTEM TEST - API SECTION 1: 9⅝-IN. 47-LB L-80 CASING**

Flow Area	14.7 sq. in./ft
Casing Hole Diameter (avg.)	1.07 in.
Total Penetration (avg.)	5.50 in.

**SYSTEM TEST - API SECTION 1: 10⅞-IN. 79.2-LB Q-125 CASING**

Flow Area	8.3 sq. in.
Casing Hole Diameter (avg.)	0.77 in.
Total Penetration (avg.)	5.80 in.

**MECHANICAL**

Gun Outside Diameter	6¾ in.
Pressure Rating	25,000 psi
Tensile Rating	814,000 lb
Connections	Standard gun threads (pin x box)
Shots Per Foot	18 SPF 3/Plane
Phasing	60°/120°

**CHARGE**

390 MaxForce Flow, HMX, BH Charges

Explosive Load	39.0 g
----------------	--------

**ENVIRONMENTAL**

400°F for 1 hr	17.6 (8.0)
----------------	------------

For more information, contact your local Halliburton representative or visit us on the web at [www.halliburton.com](http://www.halliburton.com)

Sales of Halliburton products and services will be in accord solely with the terms and conditions contained in the contract between Halliburton and the customer that is applicable to the sale.

H011694 02/25 © 2025 Halliburton. All Rights Reserved.

[halliburton.com](http://halliburton.com)

**HALLIBURTON**