

DPU[®] Actuated Perforator

NON-EXPLOSIVE ELECTRO-MECHANICAL PERFORATOR SOLUTION

OVERVIEW

The Halliburton Downhole Power Unit (DPU[®]), Elite Downhole Power Unit (EDPU), and Downhole Power Unit–Intelligent (DPUi) can be set up to run the DPU actuated perforator.

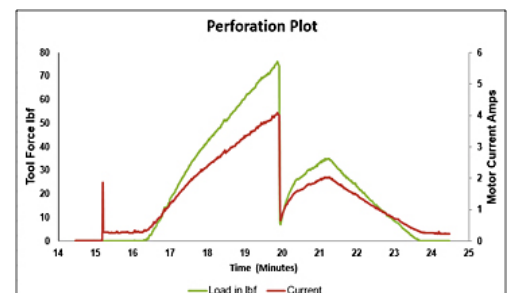
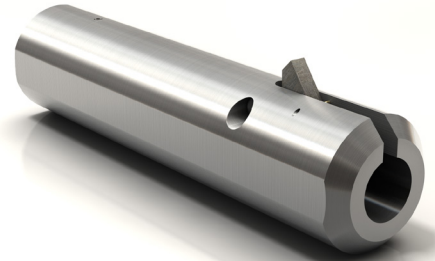
- » Non-explosive
- » Slow setting action will not damage control lines
- » Large flow area for circulation
- » Works across multiple pipe grades
- » Onboard key performance indicator (KPI) data
- » Conveyance independent on slickline, RELAY™ digital slickline, e-line, Tractor, and coiled-tubing solutions

FEATURES

- » Works in 3½ -inch, 4½ -inch, 5½ -inch and 7 -inch. pipe sizes
- » Operates in multiple tubing grades: J-55, L-80, P-110, Q125, 13Cr, and 25Cr
- » Works in tubing and casing
- » Slow setting speed of 0.5 inch/minute allows perforating with control line in place
- » Large flow area allows 4 BPM to 6 BPM circulation flow
- » Onboard memory to analyze setting force, motor voltage, motor current, stroke length, and elapsed time to provide a digital signature of the set
- » Perforating force up to 80,000 lbf with the 3.59-inch tool
- » High-temperature, 2.75-inch tool rated to 375°F (191°C)
- » RELAY DSL and e-line offer real-time depth correlation and on-command control

BENEFITS

- » Improved health, safety, and environmental (HSE) results with non-explosive devices that do not require the additional logistical handling personnel to move explosives
- » Optional non-dangerous-goods power cell for easy transport
- » Non-pressure-compensated design allows for a hydrostatic boost during barrier sets
- » Short tool design allows for easy rig-up for limited-height scenarios
- » Designed for a slow electro-mechanical set, and the tool is jarring tolerant



DPU® Actuated Perforator (Tubing or Casing) Specifications

Pipe Size	3.5 in.	4.5 in.	4.5 in.	5.5 in.	7 in.	7 in.
Tubing Weight	7.7 to 10.2 ppf	9.5 to 12.6 ppf	11.5 to 15.5 ppf	14.0 to 20 ppf	17 to 29 ppf	23 to 32 ppf
Flow Area	0.263 in.	0.335 in.	0.335 in.	0.944 in.	1.412 in.	1.412 in.
Tool Outside Diameter	2.78 in.	3.8 in.	3.59 in. Expanded	4.5 in.	5.6 in.	5.75 in.
DPU Size	DPU, EDPU & DPUi 2.5 in.	DPU & EDPU 2.75 in.	DPU & EDPU 3.59 in. DPUi 3.38 in.	DPU & EDPU 3.59 in. DPUi 3.38 in.	DPU & EDPU 3.59 in. DPUi 3.38 in.	DPUi 4.5 in.
Outside Diameter	2.51 in. 63.8 mm	2.75 in. 42.9 mm	3.59 in. 91.2 mm	3.59 in. 91.2 mm	3.59 in. 91.2 mm	4.5 in. 114.2 mm
Setting Force	40,000 lbf* 177.9 KN	40,000 lbf* 177.9 KN	70,000 lbf*** 311.4 KN	70,000 lbf*** 311.4 KN	70,000 lbf*** 311.4 KN	100,000 lbf 444.8 KN
Stroke Length	13.0 in.* 412.8 mm	9.0 in 228.6 mm	13.0 in.*** 412.8 mm	13.0 in.*** 412.8 mm	13.0 in.*** 412.8 mm	13 in. 330.2 mm
Pressure Rating	30,000 psi* 206.8 MPa	15,000 psi 103 MPa	30,000 psi*** 206.8 MPa	30,000 psi*** 206.8 MPa	30,000 psi*** 206.8 MPa	30,000 psi 206.8 MPa
Temperature Rating	340°F* 171°C	375°F** 191°C	340°F*** 171°C	340°F*** 171°C	340°F*** 171°C	340°F 160°C

* 2.5-inch DPUi, 13-inch stroke with 40,000-lb force, 30,000 psi, and 340°F (171°C)

2.51-inch DPU and EDPU, 9-inch (215.4-mm) stroke, 30,000-lb (133.5-KN) force, 15,000 psi (103 MPa), and 302°F (150°C)

** Temperature rating of 375°F (191°C) with lithium batteries, 302°F (150°C) with alkaline batteries

*** 3.375-inch DPUi, 13-inch stroke with 70,000-lb force, 30,000 psi, and 340°F (171°C). 3.59-inch DPU and EDPU, 8.75-inch (222.3-mm) stroke, 60,000-lb (266.9-KN) force, 10,000 psi (103 MPa), and 329°F (165°C) with lithium batteries, 250°F (121°C) with alkaline batteries.

For more information, contact your local Halliburton representative or visit us on the web at www.halliburton.com

Sales of Halliburton products and services will be in accord solely with the terms and conditions contained in the contract between Halliburton and the customer that is applicable to the sale.

H010511 08/21 © 2021 Halliburton. All Rights Reserved.